



# 70-687<sup>Q&As</sup>

Configuring Windows 8.1

**Pass Microsoft 70-687 Exam with 100% Guarantee**

Free Download Real Questions & Answers **PDF** and **VCE** file from:

<https://www.geekcert.com/70-687.html>

100% Passing Guarantee  
100% Money Back Assurance

Following Questions and Answers are all new published by Microsoft  
Official Exam Center

-  **Instant Download** After Purchase
-  **100% Money Back** Guarantee
-  **365 Days** Free Update
-  **800,000+** Satisfied Customers





### QUESTION 1

A company has an Active Directory Domain Services (AD DS) domain. The corporate environment includes a Windows Software Update Services (WSUS) server. All client computers run Windows 8 and a custom web application. The company has a Microsoft Software Assurance for Volume Licensing agreement.

After deploying Windows Updates to the computers, the web application stops responding. You establish that a specific optional update installed by Windows Update is causing the problem. In the Windows Update Control Panel item, the option to remove the update is unavailable.

You need to remove the optional update from one client computer. What should you do?

- A. Install and run the Debugging tools for Windows.
- B. Clear the SusClientID registry value on the client computer.
- C. Restart the computer from a Diagnostic and Repair Toolset (DaRT) boot disk and use the Crash Analyzer tool.
- D. Run the `wuauctl /resetauthorization` command on the client computer.
- E. Restart the computer from a Diagnostic and Repair Toolset (DaRT) boot disk and use the Hotfix Uninstaller tool.

Correct Answer: E

---

### QUESTION 2

You administer a group of 10 client computers that run Windows 8. The client computers are members of a local workgroup. Employees log on to the client computers by using their Microsoft accounts.

The company plans to use Windows BitLocker Drive Encryption.

You need to back up the BitLocker recovery key.

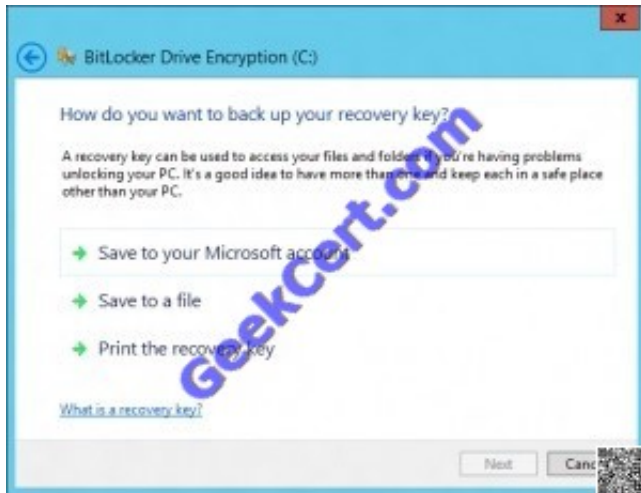
Which two options can you use? (Each correct answer presents a complete solution.

Choose two.)

- A. Save the recovery key to a file on the BitLocker-encrypted drive.
- B. Save the recovery key in the Credential Store.
- C. Save the recovery key to SkyDrive.
- D. Print the recovery key.

Correct Answer: AD

One of the new features in Windows 8 for BitLocker is the ability to backup your BitLocker recovery key to a Microsoft account. During the process before encryption begins, a user is prompted for a location to make a backup copy of the recovery key. Save to your Microsoft account has been added along with save to a file and print the recovery key.



### QUESTION 3

A company has client computers that run Windows 8. Each employee has one client computer at the office. Some employees also have personal computers at home.

The company has applications that run only on Windows 8.

You need to deploy Windows To Go so that employees can run the applications on their home computers.

Which two command-line tools should you use? (Each correct answer presents part of the solution. Choose two.)

- A. isoburn
- B. BdeHdCfg
- C. ImageX
- D. bcd boot

Correct Answer: CD

If you get DISM as an additional option in this question, I would select DISM. DISM is already integrated in the Windows 8 OS and it is the newer feature than ImageX. To use ImageX we have to install Windows 8 AIK first.



```
Administrator: C:\Windows\system32\cmd.exe - imagex /apply D:\sources\insta...
DISKPART> select partition 1
Partition 1 is now the selected partition.
DISKPART> delete partition
DiskPart successfully deleted the selected partition.
DISKPART> list partition
There are no partitions on this disk to show.
DISKPART> create partition primary
DiskPart succeeded in creating the specified partition.
DISKPART> format fs=ntfs quick
    100 percent completed
DiskPart successfully formatted the volume.
DISKPART> active
DiskPart marked the current partition as active.
DISKPART> exit
Leaving DiskPart...
C:\Windows\system32>cd c:\
```

```
Administrator: C:\Windows\system32\cmd.exe
c:\Users\gborn\Desktop>imagex /apply D:\sources\install.wim 1 F:\
ImageX Tool for Windows
Copyright (C) Microsoft Corp. All rights reserved.
Version: 6.1.7600.16385

[ 100% ] Applying progress
Successfully applied image.
[   4% ] Applying progress: 2:19:53 hrs remaining
Total elapsed time: 181 min 46 sec

c:\Users\gborn\Desktop>bcdboot f:\windows /s f: /f All
Boot files successfully created.
c:\Users\gborn\Desktop>_
```

#### QUESTION 4

A Company has 10 computers that run windows vista. The computers are members of a workgroup.



The company plans to upgrade the computers to windows 8. You are planning a deployment strategy.

You need to ensure that users can log on to their existing accounts and access their existing data after the upgrade.

Which three actions should you perform in sequence? (To answer, move the appropriate actions from the list of actions to the answer area and arrange them in the correct order.)

Select and Place:

Actions	Answer Area
Run the Windows 8 Setup Wizard.	
Start the portable computer from the bootable USB flash drive.	
Run the Windows 7 Upgrade Advisor.	
Create Windows 8 installation media by extracting the installation files to a bootable USB flash drive.	
Create Windows 8 installation media by copying the Windows 8 .iso image file to a bootable USB flash drive.	
Start the portable computer with the original operating system and then insert the bootable USB flash drive.	

Correct Answer:



Actions	Answer Area
	Create Windows 8 installation media by extracting the installation files to a bootable USB flash drive.
	Start the portable computer from the bootable USB flash drive.
Run the Windows 7 Upgrade Advisor.	Run the Windows 8 Setup Wizard.
Create Windows 8 installation media by copying the Windows 8 .iso image file to a bootable USB flash drive.	
Start the portable computer with the original operating system and then insert the bootable USB flash drive.	

### QUESTION 5

A company is setting up a new branch office. You deploy 10 new Windows 8.1 64-bit client computers in the branch office.

The computers cannot connect to the Internet. You run the ipconfig command on one computer. The following output depicts a portion of the results.

```
IPv4 Address. . . . . : 169.254.2.45<Preferred>  
Subnet Mask . . . . . : 255.255.0.0  
Default Gateway . . . . :  
[QR Code]
```

You need to ensure that the computers can connect to the Internet. What should you do?

- A. Deploy a Dynamic Host Configuration Protocol (DHCP) server. Configure all computers to use DHCP.
- B. Deploy an Internet Information Services (IIS) server. Configure all computers to use IIS.
- C. Deploy a Domain Name System (DNS) server. Configure all computers to use DNS.
- D. Deploy a Windows Internet Name Service (WINS) server. Configure all computers to use WINS.

Correct Answer: A





To Read the [Whole Q&As](#), please purchase the [Complete Version](#) from [Our website](#).

## Try our product !

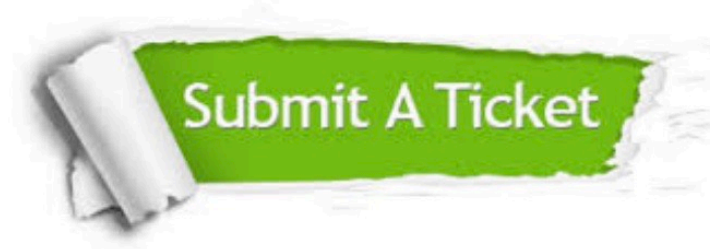
- 100% Guaranteed Success
- 100% Money Back Guarantee
- 365 Days Free Update
- Instant Download After Purchase
- 24x7 Customer Support
- Average 99.9% Success Rate
- More than 800,000 Satisfied Customers Worldwide
- Multi-Platform capabilities - [Windows](#), [Mac](#), [Android](#), [iPhone](#), [iPod](#), [iPad](#), [Kindle](#)

We provide exam PDF and VCE of Cisco, Microsoft, IBM, CompTIA, Oracle and other IT Certifications. You can view Vendor list of All Certification Exams offered:

<https://www.geekcert.com/allproducts>

## Need Help

Please provide as much detail as possible so we can best assist you.  
To update a previously submitted ticket:



 <p><b>One Year Free Update</b> Free update is available within One Year after your purchase. After One Year, you will get 50% discounts for updating. And we are proud to boast a 24/7 efficient Customer Support system via Email.</p>	 <p><b>Money Back Guarantee</b> To ensure that you are spending on quality products, we provide 100% money back guarantee for 30 days from the date of purchase.</p>	 <p><b>Security &amp; Privacy</b> We respect customer privacy. We use McAfee's security service to provide you with utmost security for your personal information &amp; peace of mind.</p>
---	---	--

Any charges made through this site will appear as Global Simulators Limited.  
All trademarks are the property of their respective owners.  
Copyright © geekcert, All Rights Reserved.