



70-692^{Q&As}

Upgrading Your Windows XP Skills to MCSA Windows 8

Pass Microsoft 70-692 Exam with 100% Guarantee

Free Download Real Questions & Answers **PDF** and **VCE** file from:

<https://www.geekcert.com/70-692.html>

100% Passing Guarantee
100% Money Back Assurance

Following Questions and Answers are all new published by Microsoft
Official Exam Center

- ⚙ **Instant Download** After Purchase
- ⚙ **100% Money Back** Guarantee
- ⚙ **365 Days** Free Update
- ⚙ **800,000+** Satisfied Customers





QUESTION 1

Your company has a main office and two branch offices named Branch1 and Branch2. The main office contains a file server named Server1 that has BranchCache enabled. Branch1 contains a server named Server2 that is configured as a hosted cache server.

All client computers run Windows 8.1 Enterprise. All of the computers are joined to an Active Directory domain.

The BranchCache settings of all the computers are configured as shown in the following exhibit. (Click the Exhibit button.)

The screenshot shows the Group Policy Management console for a Group Policy Object (GPO) named "BranchCache GPO". The "Settings" tab is selected. The GPO is applied to "Computer Configuration (Enabled)". The "Policies" section shows "Administrative Templates" and "Network/BranchCache". The "Network/BranchCache" policy is expanded, showing a list of settings. The "Enable Automatic Hosted Cache" setting is set to "Enabled". The "Discovery by Service Connection Point" setting is set to "Enabled". The "Set BranchCache Distributed Cache mode" setting is set to "Enabled". The "Set percentage of disk space used for client computer cache" setting is set to "Enabled". The "Specify the percentage of total disk space allocated for the cache" setting is set to "5". The "User Configuration (Enabled)" section shows "No settings defined."

Policy	Setting	Comment
Enable Automatic Hosted Cache	Enabled	
Discovery by Service Connection Point	Enabled	
Set BranchCache Distributed Cache mode	Enabled	
Set percentage of disk space used for client computer cache	Enabled	
Specify the percentage of total disk space allocated for the cache	5	

Policy	Setting	Comment
Turn on BranchCache	Enabled	






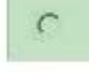
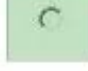

In the table below, identify the effective setting for the client computers in each branch office. Make one selection in each column. Each correct selection is worth one point.

Hot Area:



Effective setting	Branch1 Computers	Branch2 Computers
Will not use BranchCache.		
Will retrieve cached content from peers.		
Will retrieve cached content from Server1.		
Will retrieve cached content from Server2.		

Correct Answer:

Effective setting	Branch1 Computers	Branch2 Computers
Will not use BranchCache.		
Will retrieve cached content from peers.		
Will retrieve cached content from Server1.		
Will retrieve cached content from Server2.		

QUESTION 2

A company has 20 portable computers that run Windows 7. The computers are members of a workgroup.

The company plans to upgrade the computers to Windows 8.1. You are planning a deployment strategy.

You need to ensure that users can log on to their existing accounts and access their existing data after the upgrade.

Which three actions should you perform in sequence? (To answer, move the appropriate actions from the list of actions to the answer area and arrange them in the correct order.)

Select and Place:



Actions	Answer Area
Create Windows 8.1 installation media by extracting the installation files to a bootable USB flash drive.	
Create Windows 8.1 installation media by copying the Windows 8.1 .iso image file to a bootable USB flash drive.	
Start the portable computer with the original operating system and then insert the bootable USB flash drive.	
Start the portable computer from the bootable USB flash drive.	
Run the Windows 8.1 Setup Wizard.	
Run the Windows 7 Upgrade Advisor.	

Correct Answer:

Actions	Answer Area
	Create Windows 8.1 installation media by extracting the installation files to a bootable USB flash drive.
Create Windows 8.1 installation media by copying the Windows 8.1 .iso image file to a bootable USB flash drive.	Start the portable computer with the original operating system and then insert the bootable USB flash drive.
	Run the Windows 8.1 Setup Wizard.
Start the portable computer from the bootable USB flash drive.	
Run the Windows 7 Upgrade Advisor.	

QUESTION 3

A company has an Active Directory Domain Services (AD DS) domain. All client computers run Windows 8.1.

You need to configure 20 portable computers so that they sleep after 20 minutes when running on battery power. You must accomplish this goal by using the least amount of administrative effort.

Which two actions should you perform? (Each correct answer presents part of the complete solution. Choose two.)



- A. Edit the local Group Policy to configure the Shut Down options.
- B. Create a Group Policy object (GPO) that configures the Sleep Management settings.
- C. Create a Group Policy object (GPO) that configures the Power Management settings.
- D. Link the Group Policy object (GPO) to the organizational unit containing the portable computers.
- E. Edit the local Group Policy to configure the Power Management settings.

Correct Answer: CD

Explanation: Put the Laptops into an OU.

Create an appropriate GPO.

Link the GPO to the OU.

Note:

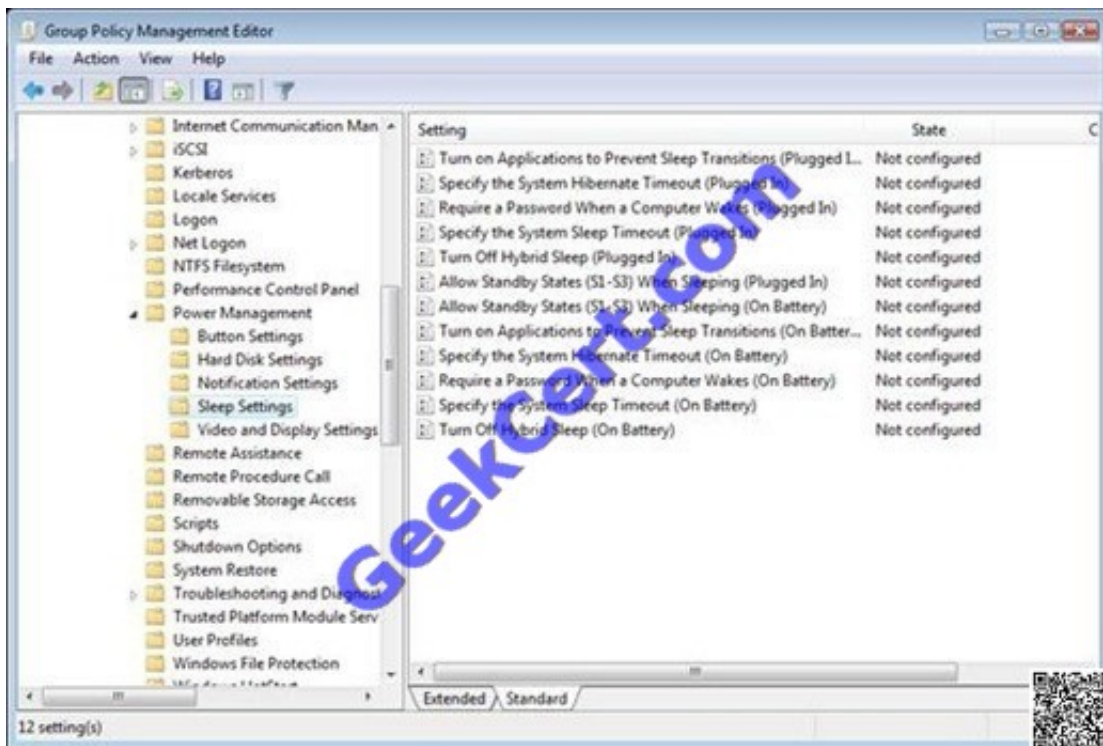
* Networking power management (not sleep management) refers to the set of features that you can configure to allow the computers in your network to save energy.

Incorrect:

Local Group Policy would have to be edited locally on each laptop.

<http://blogs.technet.com/b/askds/archive/2008/03/19/managing-power-with-group-policy-part-2-or-3.aspx>

Managing Power with Group Policy: Part 2 of 3



C:\Users\Chaudhry\Desktop\1.jpg



Another related policy setting is Specify the System Sleep Timeout, only the value entered (in seconds) indicates how much idle time elapses before Windows enters sleep mode.

Further Information:

Put the Laptops into an OU.

Create an appropriate GPO.

Link the GPO to the OU.

QUESTION 4

You manage computers that run Windows 8.1.

You plan to install a desktop app named App1 on one of the client computers.

You need to install the app without any user interaction and without displaying a progress bar.

Which command should you run?

- A. `msiexec /i appl.msi /qb`
- B. `msiexec /x appl.msi /qn`
- C. `msiexec /i appl.msi /qn`
- D. `msiexec /x appl.msi /qb`

Correct Answer: C

Explanation: [http://technet.microsoft.com/en-us/library/cc759262\(v=ws.10\).aspx](http://technet.microsoft.com/en-us/library/cc759262(v=ws.10).aspx)

Msiexec (command-line options)

Provides the means to install, modify, and perform operations on Windows Installer from the command line.

`/i` installs or configures a product

`/qn` displays no user interface

Further information:

`/x` uninstalls a product.

QUESTION 5

Your company recently purchased 25 new laptops. All 25 laptops have the same hardware configuration and do not have any operating system installed.

You have been asked to deploy Windows 8 on these laptops. You have installed and configured Windows 8 on a reference laptop.



You need to create an image and deploy it to the 25 new laptops.

Which four actions should you perform in sequence? (To answer, move the appropriate actions from the list of actions to the answer area and arrange them in the correct order.)

Select and Place:

	Answer Area
Start the destination laptop from the Windows PE media. Use the Diskpart tool to create the desired partition structure.	
Start the destination laptop from the Windows PE media, and then use the Fdisk tool to create the desired partition structure.	
Remove computer-specific information from the reference laptop.	
Start the reference laptop from the Windows PE media. Use the DISM tool to capture the image, and then upload the image file to a network share.	
Use Windows Easy Transfer (WET) to transfer the image from network share, and then use the DISM tool to apply the image to your windows partition.	
Connect to the network share, and then use the DISM tool to apply the image to your windows partition.	

Correct Answer:



Answer Area	
Start the destination laptop from the Windows PE media. Use the Diskpart tool to create the desired partition structure.	Remove computer-specific information from the reference laptop.
	Start the reference laptop from the Windows PE media. Use the DISM tool to capture the image, and then upload the image file to a network share.
	Start the destination laptop from the Windows PE media, and then use the Fdisk tool to create the desired partition structure.
	Connect to the network share, and then use the DISM tool to apply the image to your windows partition.
Use Windows Easy Transfer (WET) to transfer the image from network share, and then use the DISM tool to apply the image to your windows partition.	

[70-692 PDF Dumps](#)[70-692 Practice Test](#)[70-692 Braindumps](#)



To Read the [Whole Q&As](#), please purchase the [Complete Version](#) from [Our website](#).

Try our product !

100% Guaranteed Success
100% Money Back Guarantee
365 Days Free Update
Instant Download After Purchase
24x7 Customer Support
Average 99.9% Success Rate
More than 800,000 Satisfied Customers Worldwide
Multi-Platform capabilities - Windows, Mac, Android, iPhone, iPod, iPad, Kindle

We provide exam PDF and VCE of Cisco, Microsoft, IBM, CompTIA, Oracle and other IT Certifications.
You can view Vendor list of All Certification Exams offered:

<https://www.geekcert.com/allproducts>

Need Help

Please provide as much detail as possible so we can best assist you.
To update a previously submitted ticket:



 One Year Free Update Free update is available within One Year after your purchase. After One Year, you will get 50% discounts for updating. And we are proud to boast a 24/7 efficient Customer Support system via Email.	 Money Back Guarantee To ensure that you are spending on quality products, we provide 100% money back guarantee for 30 days from the date of purchase.	 Security & Privacy We respect customer privacy. We use McAfee's security service to provide you with utmost security for your personal information & peace of mind.
---	---	--

Any charges made through this site will appear as Global Simulators Limited.
All trademarks are the property of their respective owners.
Copyright © geekcert, All Rights Reserved.