



# 70-740<sup>Q&As</sup>

Installation, Storage, and Compute with Windows Server 2016

## Pass Microsoft 70-740 Exam with 100% Guarantee

Free Download Real Questions & Answers **PDF** and **VCE** file from:

<https://www.geekcert.com/70-740.html>

100% Passing Guarantee  
100% Money Back Assurance

Following Questions and Answers are all new published by Microsoft  
Official Exam Center

-  **Instant Download** After Purchase
-  **100% Money Back** Guarantee
-  **365 Days** Free Update
-  **800,000+** Satisfied Customers





### QUESTION 1

On a new server, you install Windows Server 2016, and then you install the Hyper-V server role.

You need to ensure that you can deploy Windows containers that use an image of the Server Core installation of Windows Server.

Which four commands should you use in sequence? To answer, move the appropriate commands from the list of commands to the answer area and arrange them in the correct order.

Select and Place:

Install-Package -Name docker -ProviderName DockerMsftProvider

Restart-Computer -Force

docker pull docker / windows-x64

Set-VMProcessor -  
ExposeVirtualizationExtensions\$true

Install-Module -name DockerMsftProvider  
Repository PSGallery -Force-

docker pull Microsoft/windows servercore

Install-Package -Name Microsoft / dotnet  
framework-docker -ProviderName-  
DockerMsftProvider

Install -Windows Feature Hyper-V

Correct Answer:



	Install-Module -name DockerMsftProvider Repository PSGallery -Force-
	Install-Package -Name docker -ProviderName DockerMsftProvider
docker pull docker / windows-x64	Restart-Computer -Force
Set-VMProcessor - ExposeVirtualizationExtensions\$true	docker pull Microsoft/windows servercore
Install-Package -Name Microsoft / dotnet framework-docker -ProviderName- DockerMsftProvider	
Install -Windows Feature Hyper-V	

<https://docs.microsoft.com/en-us/virtualization/windowscontainers/deploy-containers/deploy-containers-on-server>

**QUESTION 2**

Your network contains an Active Directory forest named contoso.com. The forest contains an Active Directory Federation Services (AD FS) farm.

You install Windows Server 2016 on a server named Server2.

You need to configure Server2 as a node in the federation server farm.

Which cmdlets should you run? To answer, select the appropriate options in the answer area.

Hot Area:



### Answer Area

First cmdlet to run:

	▼
<b>Install-AdfsFarm</b>	
<b>Install-Package</b>	
<b>Install-WindowsFeature</b>	

Second cmdlet to run:

	▼
<b>Install-AdfsFarm</b>	
<b>New-AdfsOrganization</b>	
<b>Set-AdfsFarmInformation</b>	
<b>Set-Adfsproperties</b>	
<b>Add-AdfsFarmNode</b>	

Correct Answer:



### Answer Area

First cmdlet to run:

	▼
<b>Install-AdfsFarm</b>	
<b>Install-Package</b>	
<b>Install-WindowsFeature</b>	

Second cmdlet to run:

	▼
<b>Install-AdfsFarm</b>	
<b>New-AdfsOrganization</b>	
<b>Set-AdfsFarmInformation</b>	
<b>Set-Adfsproperties</b>	
<b>Add-AdfsFarmNode</b>	

#### QUESTION 3

You have a machine named VM1 that runs Windows Server 2016 VM1 is a Remote Desktop Services (RDS) server.

You need to ensure that only TCP port 3389 can be used to connect to VM1 over the network.



Which command should you run on the Hyper-V host? To answer, select the appropriate options in the answer area.

Hot Area:

**Answer Area**

	-VMName VM1 -Direction	
Add-VmNetworkAdapterAcl		Inbound
Add-VmNetworkAdapterExtendedAcl		Outbound
Add-VmNetworkAdapter		
Add-VmNetworkAdapterRoutingDomain		
Mapping		

Correct Answer:

**Answer Area**

	-VMName VM1 -Direction	
Add-VmNetworkAdapterAcl		Inbound
Add-VmNetworkAdapterExtendedAcl		Outbound
Add-VmNetworkAdapter		
Add-VmNetworkAdapterRoutingDomain		
Mapping		

**QUESTION 4**

You have a Hyper-V host named Server1 that runs Windows Server 2016. Server 1 hosts a virtual machine named VM1 that runs Windows Server 2016.

Server1 has a USB 3.0 device attached to a PCI Express (PCIe) bus.

You need to provide VM1 with pass-through access to the USB 3.0 device.

Which three actions should you perform in sequence? To answer, move the appropriate actions from the list of actions to the answer area and arrange them in the correct order.

Select and Place:



**Actions**

- On Server1, run the **Dismount-VMHostAssignableDevice** cmdlet.
- On Server1, run the **Add-VMAssignableDevice** cmdlet
- On Server1, run the **Disable-PnPDevice** cmdlet
- On VM1, run the **Enable-PnPDevice** cmdlet
- On VM1, ran the **Mount-VMHostAssignable Device** cmdlet

**Answer Area**

- 1
- 2
- 3

Correct Answer:

**Actions**

- 
- 
- 
- On VM1, run the **Enable-PnPDevice** cmdlet
- On VM1, ran the **Mount-VMHostAssignable Device** cmdlet

**Answer Area**

- 1 On Server1, run the **Disable-PnPDevice** cmdlet
- 2 On Server1, run the **Dismount-VMHostAssignableDevice** cmdlet.
- 3 On Server1, run the **Add-VMAssignableDevice** cmdlet

References: <https://blogs.technet.microsoft.com/heyscriptingguy/2016/07/14/passing-through-devices-to-hyper-v-vms-by-using-discrete-device-assignment/>

**QUESTION 5**

Note: This question is part of a series of questions that present the same scenario. Each question in the series contains a unique solution that might meet the stated goals. Some question sets might have more than one correct solution, while

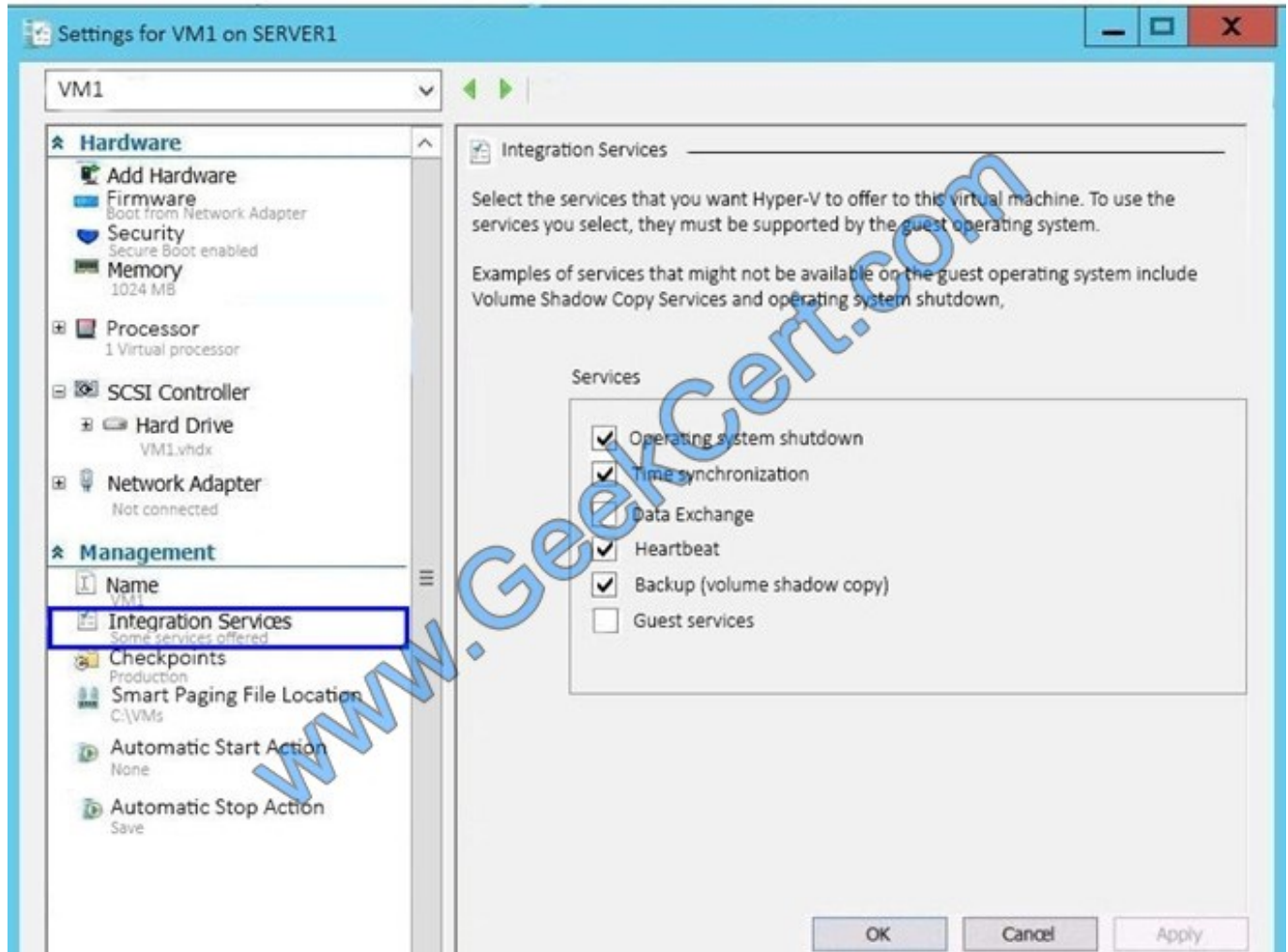
others might not have a correct solution.

After you answer a question in this section, you will NOT be able to return to it. As a result, these questions will not appear in the review screen.



You have a Hyper-V host named Server1 that hosts a virtual machine named VM1. Server1 and VM1 run Windows Server 2016.

The settings for VM1 are configured as shown in the exhibit. (Click the Exhibit button.)



You need to ensure that you can use the Copy-VMFile cmdlet on Server1 to copy files from VM1.

Solution: You start the Hyper-V Guest Service Interface service on VM1.

Does this meet the goal?

A. Yes

B. No

Correct Answer: A

References: [https://technet.microsoft.com/en-us/library/dn798297\(v=ws.11\).aspx](https://technet.microsoft.com/en-us/library/dn798297(v=ws.11).aspx)





To Read the [Whole Q&As](#), please purchase the [Complete Version](#) from [Our website](#).

## Try our product !

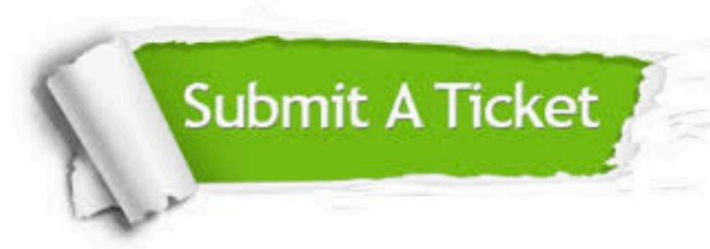
- 100% Guaranteed Success
- 100% Money Back Guarantee
- 365 Days Free Update
- Instant Download After Purchase
- 24x7 Customer Support
- Average 99.9% Success Rate
- More than 800,000 Satisfied Customers Worldwide
- Multi-Platform capabilities - [Windows](#), [Mac](#), [Android](#), [iPhone](#), [iPod](#), [iPad](#), [Kindle](#)

We provide exam PDF and VCE of Cisco, Microsoft, IBM, CompTIA, Oracle and other IT Certifications. You can view Vendor list of All Certification Exams offered:

<https://www.geekcert.com/allproducts>

## Need Help

Please provide as much detail as possible so we can best assist you.  
To update a previously submitted ticket:



 <p><b>One Year Free Update</b> Free update is available within One Year after your purchase. After One Year, you will get 50% discounts for updating. And we are proud to boast a 24/7 efficient Customer Support system via Email.</p>	 <p><b>Money Back Guarantee</b> To ensure that you are spending on quality products, we provide 100% money back guarantee for 30 days from the date of purchase.</p>	 <p><b>Security &amp; Privacy</b> We respect customer privacy. We use McAfee's security service to provide you with utmost security for your personal information &amp; peace of mind.</p>
---	---	--

Any charges made through this site will appear as Global Simulators Limited.  
All trademarks are the property of their respective owners.  
Copyright © geekcert, All Rights Reserved.