



70-741^{Q&As}

Networking with Windows Server 2016

Pass Microsoft 70-741 Exam with 100% Guarantee

Free Download Real Questions & Answers **PDF** and **VCE** file from:

<https://www.geekcert.com/70-741.html>

100% Passing Guarantee
100% Money Back Assurance

Following Questions and Answers are all new published by Microsoft
Official Exam Center

-  **Instant Download** After Purchase
-  **100% Money Back** Guarantee
-  **365 Days** Free Update
-  **800,000+** Satisfied Customers





QUESTION 1

Note: This question is part of a series of questions that use the same or similar answer choices. An answer choice may be correct for more than one question in the series. Each question is independent of the other questions in this series.

Information and details provided in a question apply only to that question.

You have a DHCP server named Server1 that has an IPv4 scope named Scope1.

Users report that when they turn on their client computers, it takes a long time to access the network.

You validate that it takes a long time for the computers to receive an IP address from Server1.

You monitor the network traffic and discover that Server1 issues five ping commands on the network before leasing an IP address.

You need to reduce the amount of time it takes for the computers to receive an IP address.

What should you do?

- A. From the properties of Scope1, modify the Conflict detection attempts setting.
- B. From the properties of Scope1, configure Name Protection.
- C. From the properties of IPv4, configure the bindings.
- D. From IPv4, create a new filter.
- E. From the properties of Scope1, create an exclusion range.
- F. From IPv4, run the DHCP Policy Configuration Wizard.
- G. From Control Panel, modify the properties of Ethernet.
- H. From Scope1, create a reservation.

Correct Answer: A

[https://technet.microsoft.com/en-us/library/ee941125\(v=ws.10\).aspx](https://technet.microsoft.com/en-us/library/ee941125(v=ws.10).aspx)

QUESTION 2

Note: This question is part of a series of questions that use the same scenario. For your convenience, the scenario is repeated in each question. Each question presents a different goal and answer choices, but the text of the scenario is exactly the same in each question in this series.

Start of repeated scenario

Your network contains an Active Directory domain named contoso.com. The functional level of the domain is Windows Server 2012.



The network uses an address space of 192.168.0.0/16 and contains multiple subnets.

The network is not connected to the Internet.

The domain contains three servers configured as shown in the following table.

Server name	Configuration
Server1	Domain controller and DNS server
Server2	Member server
Server3	DHCP server

Client computers obtain TCP/IP settings from Server3.

You add a second network adapter to Server2. You connect the new network adapter to the Internet. You install the Routing role service on Server2.

Server1 has four DNS zones configured as shown in the following table.

DNS zone name	Type	Zone file name
Contoso.com	Active Directory-integrated	None
Fabrikam.com	Primary	Fabrikam.com.dns
Tailspintoys.com	Primary	Tailspintoys.com.dns
168.192.in-addr.arpa	Primary	168.192.in-addr.arpa.dns

End of repeated scenario

Server1 has four DNS zones configured as shown in the following table.

You need to create a zone to ensure that Server1 can resolve single-label names. What should you name the zone on Server1?

- A. . (root)
- B. WINS
- C. NetBIOS
- D. GlobalNames

Correct Answer: D

[https://technet.microsoft.com/en-us/library/cc816610\(v=ws.10\).aspx](https://technet.microsoft.com/en-us/library/cc816610(v=ws.10).aspx)

QUESTION 3

After you answer a question in this section, you will NOT be able to return to it. As a result, these questions will not appear in the review screen.

Your network contains an Active Directory domain named contoso.com.



You need to create a Nano Server image named Nano1 that will be used as a virtualization host. The windows server 2016 source files are located in drive D.

Solution: You run the following cmdlet.

```
New-NanoServerImage -Edition Datacenter -DeploymentType Host -PackageMicrosoft-NanoServerCompute-Package -MediaPath 'D:\' -TargetPathC:\Nano1\Nano1.wim -ComputerName Nano1 -DomainName Contoso.com
```

Does this meet the goal?

- A. Yes
- B. NO

Correct Answer: A

QUESTION 4

The following question is difficult, take your time and use a piece of paper if you need. What is the network ID of the IP node 129.56.189.41 with a subnet mask of 255.255.240.0?

- A. 129.56.189.0
- B. 129.56.176.1
- C. 129.56.189.1
- D. 129.56.176.0

Correct Answer: D

To obtain the result, turn both numbers into their binary equivalents and line them up. Then perform the AND operation on each bit and write down the result.

10000001 00111000 10111101 00101001 IP Address

11111111 11111111 11110000 00000000 Subnet Mask 10000001 00111000 10110000 00000000 Network ID

The result of the bit-wise logical AND of the 32 bits of the IP address and the subnet mask is the network ID 129.56.176.0.

QUESTION 5

Note: This question is part of a series of questions that present the same scenario. Each question in the series contains a unique solution that might meet the stated goals. Some question sets might have more than one correct solution, while

others might not have a correct solution.

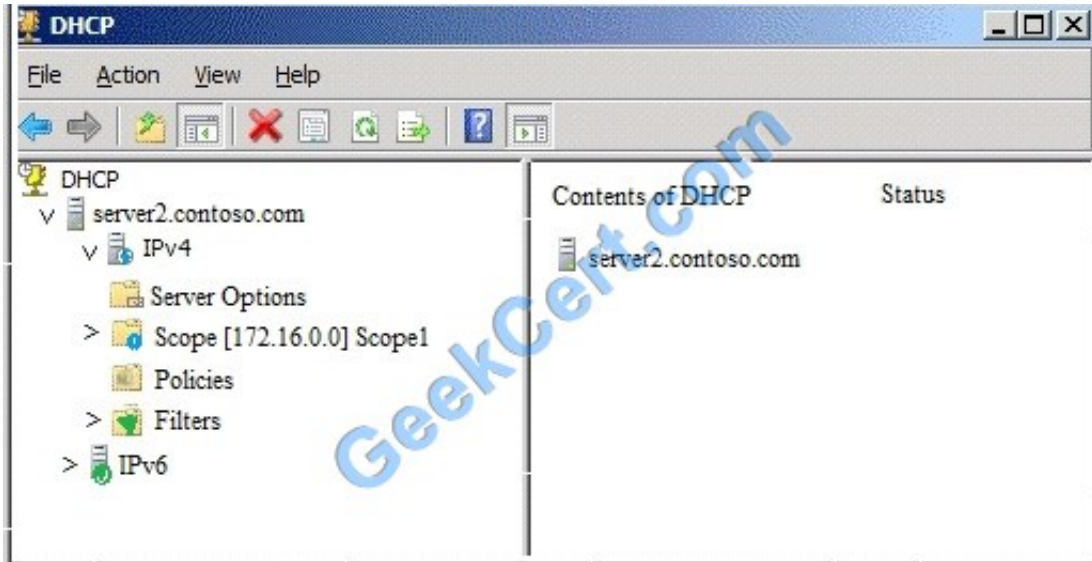
After you answer a question in this section, you will NOT be able to return to it. As a result, these questions will not appear in the review screen.



Your network contains an Active Directory domain named contoso.com. The domain contains a DHCP server named Server2 that runs Windows Server 2016.

Users report that their client computers fail to obtain an IP address.

You open the DHCP console as shown in the Exhibit. (Click the Exhibit button.)



Scope1 has an address range of 172.16.0.10 to 172.16.0.100 and a prefix length of 23 bits.

You need to ensure that all of the client computers on the network can obtain an IP address from Server2.

Solution: You run the Repair-DhcpServerv4IPRecord cmdlet.

Does this meet the goal?

A. Yes

B. No

Correct Answer: B

The scope has run out of IP addresses. The range of the scope needs to be reconfigured by using the Set-DhcpServerv4Scope cmdlet. References: <https://docs.microsoft.com/en-us/powershell/module/dhcpserver/set-dhcpserverv4scope?view=win10-ps>



To Read the [Whole Q&As](#), please purchase the [Complete Version](#) from [Our website](#).

Try our product !

- 100% Guaranteed Success
- 100% Money Back Guarantee
- 365 Days Free Update
- Instant Download After Purchase
- 24x7 Customer Support
- Average 99.9% Success Rate
- More than 800,000 Satisfied Customers Worldwide
- Multi-Platform capabilities - [Windows](#), [Mac](#), [Android](#), [iPhone](#), [iPod](#), [iPad](#), [Kindle](#)

We provide exam PDF and VCE of Cisco, Microsoft, IBM, CompTIA, Oracle and other IT Certifications. You can view Vendor list of All Certification Exams offered:

<https://www.geekcert.com/allproducts>

Need Help

Please provide as much detail as possible so we can best assist you.
To update a previously submitted ticket:



 <p>One Year Free Update Free update is available within One Year after your purchase. After One Year, you will get 50% discounts for updating. And we are proud to boast a 24/7 efficient Customer Support system via Email.</p>	 <p>Money Back Guarantee To ensure that you are spending on quality products, we provide 100% money back guarantee for 30 days from the date of purchase.</p>	 <p>Security & Privacy We respect customer privacy. We use McAfee's security service to provide you with utmost security for your personal information & peace of mind.</p>
---	---	--

Any charges made through this site will appear as Global Simulators Limited.
All trademarks are the property of their respective owners.
Copyright © geekcert, All Rights Reserved.