



70-743^{Q&As}

Upgrading Your Skills to MCSA Windows Server 2016

Pass Microsoft 70-743 Exam with 100% Guarantee

Free Download Real Questions & Answers **PDF** and **VCE** file from:

<https://www.geekcert.com/70-743.html>

100% Passing Guarantee
100% Money Back Assurance

Following Questions and Answers are all new published by Microsoft
Official Exam Center

-  **Instant Download** After Purchase
-  **100% Money Back** Guarantee
-  **365 Days** Free Update
-  **800,000+** Satisfied Customers





QUESTION 1

You have two servers named Server1 and Server2 that run Windows Server 2016.

Server1 contains a volume named Volume1.

You implement a Storage Replica that replicates the contents of Volume1 from Server1 to Server2.

Server1 fails.

From Server2, you need to ensure that you can access the contents of Volume1.

What should you run?

- A. vssadmin revert shadow
- B. Set-SRPartnership
- C. Clear-FileStorageTier
- D. Update-StoragePool

Correct Answer: B

We need to promote the destination volume to become the source volume.

Reference: <https://docs.microsoft.com/en-us/windows-server/storage/storage-replica/storage-replica-frequently-asked-questions>

QUESTION 2

Note: This question is part of a series of questions that present the same scenario. Each question in the series contains a unique solution. Determine whether the solution meets the stated goals.

Your network contains an Active Directory domain named contoso.com. The domain contains a DNS server named Server1. All client computers run Windows 10.

On Server1, you have the following zone configuration.

ZoneName	ZoneType	IsAutoCreated	IsDnsIntegrated	IsReverseLookupZone	IsSigned
_nsdcs.contoso.com	Primary	False	True	False	False
0.in-addr.arpa	Primary	True	False	True	False
127.in-addr.arpa	Primary	True	False	True	False
255.in-addr.arpa	Primary	True	False	True	False
adatum.com	Forwarder	False	False	False	False
contoso.com	Primary	False	True	False	False
fabrikam.com	Primary	False	True	False	True
TrustAnchors	Primary	False	True	False	False



You need to prevent Server1 from resolving queries from DNS clients located on Subnet4.

Server1 must resolve queries from all other DNS clients.

Solution: From a Group Policy object (GPO) in the domain, you modify the Network List Manager Policies.

Does this meet the goal?

A. Yes

B. No

Correct Answer: B

Network List Manager Policies are security settings that you can use to configure different aspects of how networks are listed and displayed on one computer or on many computers. Network List Manager Policies are not related to DNSSEC.

References: [https://technet.microsoft.com/en-us/library/jj966256\(v=ws.11\).aspx](https://technet.microsoft.com/en-us/library/jj966256(v=ws.11).aspx)

QUESTION 3

You have a DHCP server named Server1 that runs Windows Server 2016.

You have a single IP subnet.

Server1 has an IPv4 scope named Scope1. Scope1 has an IP address range of 10.0.1.10 to 10.0.1.200 and a length of 24 bits.

You need to create a second logical IP network on the subnet. The subnet will use an IP address range of 10.0.2.10 to 10.0.2.200 and a length of 24 bits.

What should you do?

A. Create a second scope, and then create a superscope.

B. Create a superscope, and then configure an exclusion range in Scope1.

C. Create a new scope, and then modify the IPv4 bindings.

D. Create a second scope, and then run the DHCP Split-Scope Configuration Wizard.

Correct Answer: A

References: <https://technet.microsoft.com/en-us/library/cc958938.aspx>

QUESTION 4

Your network contains an Active Directory domain named contoso.com. The domain contains two servers named Server1 and Server2 that run Windows Server 2016. The servers have the same hardware configuration.

You need to asynchronously replicate volume F: from Server1 to Server2.



What should you do?

- A. Install the Failover Clustering feature and create a new cluster resource group.
- B. Run Set-DfsrServiceConfiguration and specify the ?PCPort parameter.
- C. Run New-SRPartnership and specify the ?eplicationMode parameter.
- D. Install the Failover Clustering feature and use Cluster Shared Volumes (CSV).

Correct Answer: C

NOTE: If you want to setup **Asynchronous** use the ~~(New-SRPartnership -ReplicationMode Asynchronous)~~ (Primary node)

-ReplicationMode

Specifies the desired mode of replication for this source and destination pair. The acceptable values for this parameter are:

Synchronous or 1. The synchronous mode requires all writes to commit on the destination server and on the source server, which guarantees data integrity between computers.

Asynchronous or 2. The asynchronous mode writes to the source server without waiting for the destination server, which allows for replication over high latency, geographic networks. The default value is synchronous.

The default asynchronous recovery point alert time is 5 minutes. You can modify it by using the SetSRPartnership cmdlet. The alert time has no effect on replication behavior, only on reporting.

References:

<https://docs.microsoft.com/en-us/powershell/module/storagereplica/new-srpartnership?view=win10-ps>

<https://msandbu.wordpress.com/2016/05/13/getting-started-with-storage-replica-in-windows-server-2016/>

<https://www.starwindsoftware.com/blog/how-to-configure-storage-replication-using-windows-server-2016-part-1>

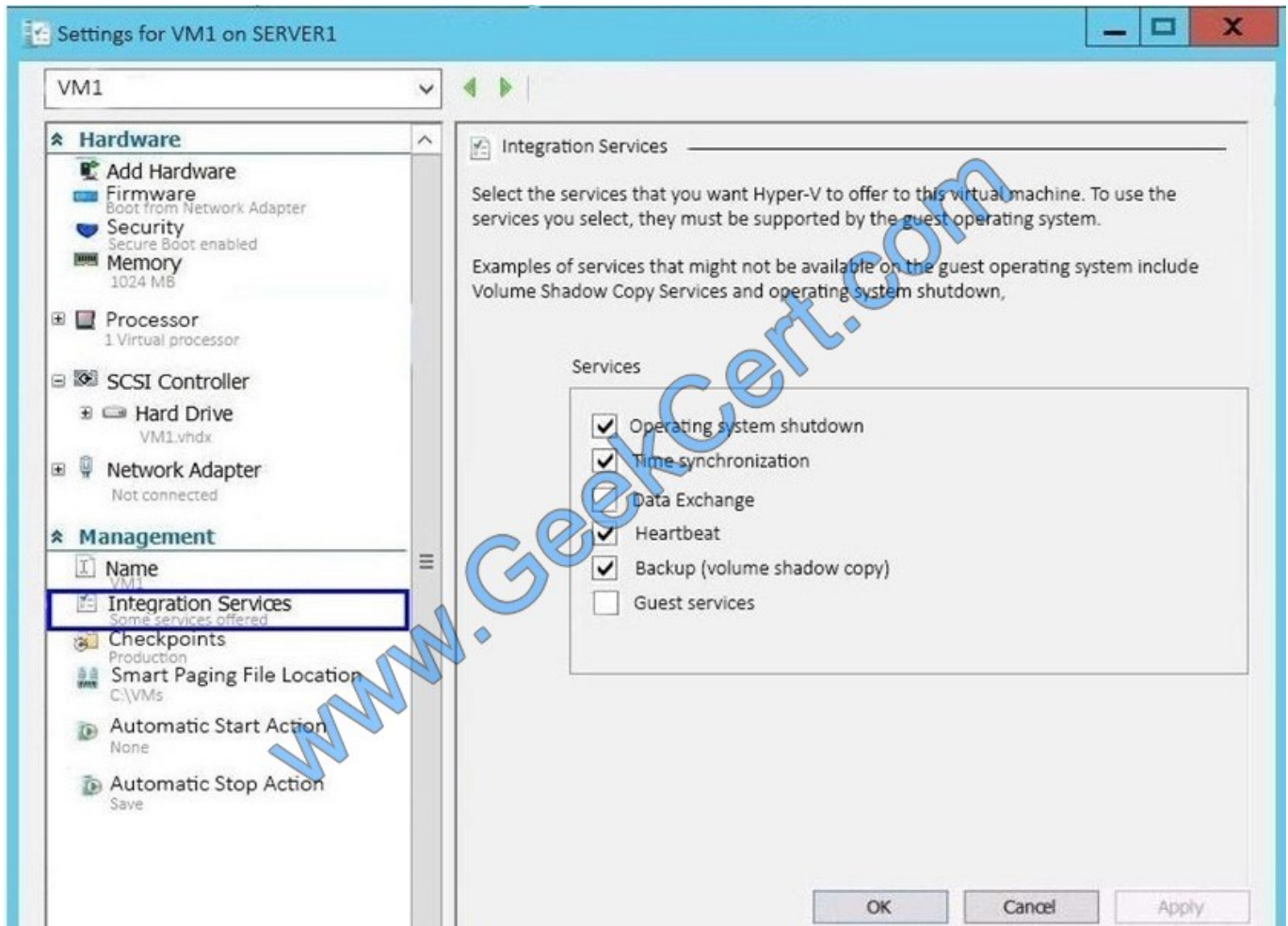
QUESTION 5

Note: This question is part of a series of questions that present the same scenario. Each question in the series contains a unique solution that might meet the stated goals. Some questions sets might have more than one correct solutions,

while others might not have a correct solution.

After you answer a question in this section, you will NOT be able to return to it. As a result, these questions will not appear in the review screen.

You have a Hyper-V host named Server1 that hosts a virtual machine named VM1. Server1 and VM1 run Windows Server 2016. The settings for VM1 are configured as shown in the exhibit below:



You need to ensure that you can use the Copy-VMFile cmdlet on Server1 to copy files from VM1.

Solution: You start the Hyper-V Guest Service Interface service on VM1

Does this meet the goal?

- A. Yes
- B. No

Correct Answer: A

Guest Services:

This is a new Integration Services component introduced in Windows Server 2012 R2 that is disabled by default.

Guest Services enables the copying of files to a virtual machine using WMI APIs or using the new Copy-VMFile PowerShell cmdlet



To Read the [Whole Q&As](#), please purchase the [Complete Version](#) from [Our website](#).

Try our product !

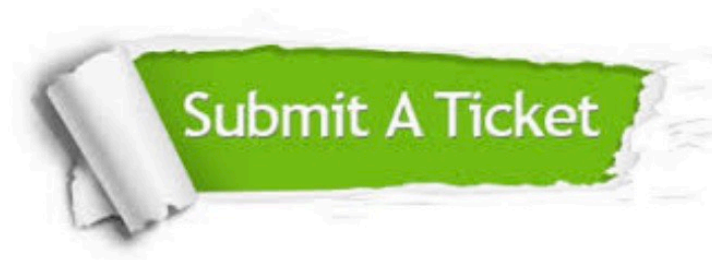
- 100% Guaranteed Success
- 100% Money Back Guarantee
- 365 Days Free Update
- Instant Download After Purchase
- 24x7 Customer Support
- Average 99.9% Success Rate
- More than 800,000 Satisfied Customers Worldwide
- Multi-Platform capabilities - [Windows](#), [Mac](#), [Android](#), [iPhone](#), [iPod](#), [iPad](#), [Kindle](#)

We provide exam PDF and VCE of Cisco, Microsoft, IBM, CompTIA, Oracle and other IT Certifications. You can view Vendor list of All Certification Exams offered:

<https://www.geekcert.com/allproducts>

Need Help

Please provide as much detail as possible so we can best assist you.
To update a previously submitted ticket:



 <p>One Year Free Update Free update is available within One Year after your purchase. After One Year, you will get 50% discounts for updating. And we are proud to boast a 24/7 efficient Customer Support system via Email.</p>	 <p>Money Back Guarantee To ensure that you are spending on quality products, we provide 100% money back guarantee for 30 days from the date of purchase.</p>	 <p>Security & Privacy We respect customer privacy. We use McAfee's security service to provide you with utmost security for your personal information & peace of mind.</p>
---	---	--

Any charges made through this site will appear as Global Simulators Limited.
All trademarks are the property of their respective owners.
Copyright © geekcert, All Rights Reserved.