



70-744^{Q&As}

Securing Windows Server 2016

Pass Microsoft 70-744 Exam with 100% Guarantee

Free Download Real Questions & Answers **PDF** and **VCE** file from:

<https://www.geekcert.com/70-744.html>

100% Passing Guarantee
100% Money Back Assurance

Following Questions and Answers are all new published by Microsoft
Official Exam Center

-  **Instant Download** After Purchase
-  **100% Money Back** Guarantee
-  **365 Days** Free Update
-  **800,000+** Satisfied Customers





QUESTION 1

Name	Configuration
Server1	Host Guardian Service (HGS)
Server2	Host Guardian Service (HGS)
Server3	Host Guardian Service (HGS)
Server4	Hyper-V host
Server5	Hyper-V host

You have a guarded fabric that consists of the servers shown in the following table.

You need to ensure that you can start the shielded virtual machines on the Hyper-V hosts if the Hyper-V hosts cannot connect to the HGS. What should you do?

- A. On Server1, run Set-HgsKeyProtectionConfiguration.
- B. On Server1, Server2, and Server3, configure admin-trusted attestation.
- C. On Server1, run Set-HgsKeyProtectionAttestationSignerCertificatePolicy.
- D. On Server4, and Server5, disable the heartbeat integration service on the shielded virtual machines.

Correct Answer: B

<https://docs.microsoft.com/en-us/windows-server/security/guarded-fabric-shielded-vm/guarded-fabric-admin-trusted-attestation-creating-a-security-group>

QUESTION 2

Your network contains an Active Directory domain named contoso.com.

The domain contains two global groups named Group1 and Group2. A user named User1 is a member of Group1

You have an organizational unit (OU) named OU1 that contains the computer accounts of computers that contain sensitive data. A Group Policy object (GPO) named GPO1 is linked to OU1. OU1 contains a computer account named

Computer1.

GPO1 has the User Rights Assignment configured as shown in the following table.

Policy name	Security setting
Allow log on locally	Contoso\Group1, Administrators, Domain Admins
Deny log on locally	Contoso\Group2

You need to prevent User1 from signing in to Computer1. What should you do?

- A. From Default Domain Policy, modify the Allow log on locally user right



- B. On Computer1, modify the Deny log on locally user right.
- C. From Default Domain Policy, modify the Deny log on locally user right
- D. Remove User1 to Group2.

Correct Answer: D

<https://technet.microsoft.com/en-us/library/cc957048.aspx>"Deny log on locally"Computer Configuration\\Windows Settings\\Security Settings\\Local Policies\\User Rights AssignmentDetermines which users are prevented from logging on at the computer.This policy setting supercedes the Allow Log on locally policy setting if an account is subject to bothpolicies.Therefore, adding User1 to Group2 will let User1 to inherit both policy, and then prevent User1 to sign in toComputer1.

QUESTION 3

Note: This question b part of a series of questions that use the same or simitar answer choices. An answer choice may be correct for more than one question in the series. Each question is independent of the other questions in this series. Information and details provided in a question apply only to that question.

Your network contains an Active Directory domain named contoso.com The domain contains a server named Server1 that runs Windows Server 2016.

Server1 has a shared folder named Share1.

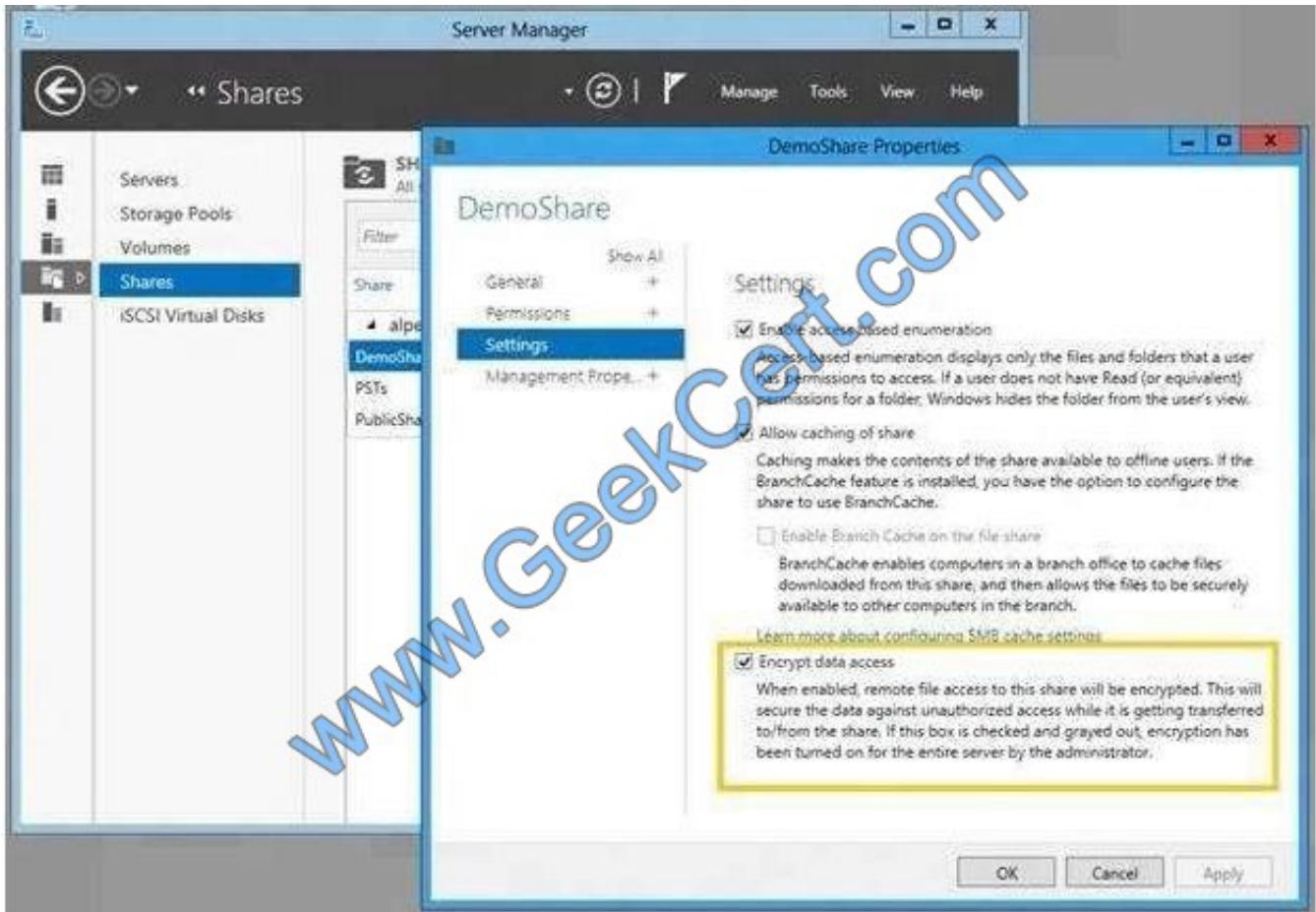
You need to ensure that all access to Share1 uses SMB Encryption.

Which tool should you use?

- A. File Explorer
- B. Shared Folders
- C. Server Manager
- D. Disk Management
- E. Storage Explorer
- F. Computer Management
- G. System Configuration
- H. File Server Resource Manager (FSRM)>

Correct Answer: C

<https://blogs.technet.microsoft.com/filecab/2012/05/03/smb-3-security-enhancements-in-windows-server-2012/>



QUESTION 4

Your network contains an Active Directory domain named contoso.com. The domain contains a server named Server1 that has Microsoft Security Compliance Manager (SCM) 4.0 installed. The domain contains domain controllers that run Windows Server 2016.

A Group Policy object (GPO) named GPO1 is applied to all of the domain controllers.

GPO1 has a Globally Unique Identifier (GUID) of 7ABCDEF8-1234-5678-90AB-005056123456.

You need to create a new baseline that contains the settings from GPO1. What should you do first?

- A. Copy the `\\\\contoso.com\\sysvol\\contoso.com\\Policies\\{7ABCDEF8-1234-5678-90AB-005056123456}` folder to Server1.
- B. From Group Policy Management, create a backup of GPO1.
- C. From Windows PowerShell, run the Copy-GPO cmdlet
- D. Modify the permissions of the `\\\\contoso.com\\sysvol\\contoso.com\\Policies\\{7ABCDEF8-1234-5678-90AB-005056123456}`

Correct Answer: B



<https://technet.microsoft.com/en-us/library/hh489604.aspx> Import Your GPOs You can import current settings from your GPOs and compare these to the Microsoft recommended best practices. Start with a GPO backup that you would commonly create in the Group Policy Management Console (GPMC). Take note of the folder to which the backup is saved. In SCM, select GPO Backup, browse to the GPO folder's Globally Unique Identifier (GUID) and select a name for the GPO when it's imported. SCM will preserve any ADM files and GP Preference files (those with non-security settings that SCM doesn't parse) you're storing with your GPO backups. It saves them in a subfolder within the user's public folder. When you export the baseline as a GPO again, it also restores all the associated files.

QUESTION 5

Note: This question is part of a series of questions that use the same scenario. For your convenience, the scenario is repeated in each question. Each question presents a different goal and answer choices, but the text of the scenario is exactly the same in each question in this series.

Start of repeated scenario

Your network contains an Active Directory domain named contoso.com. The functional level of the forest and the domain is Windows Server 2008 R2.

The domain contains the servers configured as shown in the following table.

Server name	Configuration
Nano1	Nano Server
Nano2	Nano Server
Server2	File server that has a shared folder named DATA
Server3	DNS server that has a DNSSEC-signed zone named adatum.com
Server4	Hyper-V host
Server1	Application server

All servers run Windows Server 2016. All client computers run Windows 10.

You have an organizational unit (OU) named Marketing that contains the computers in the marketing department. You have an OU named finance that contains the computers in the finance department. You have an OU named AppServers that contains application servers. A Group Policy object (GPO) named GP1 is linked to the Marketing OU. A GPO named GP2 is linked to the AppServers OU.

You install Windows Defender on Nano1.

End of repeated scenario

You need to exclude D:\Folder1 on Nano1 from being scanned by Windows Defender.

Which cmdlet should you run?

- A. Set-StorageSetting
- B. Set-FsrmFileScreenException
- C. Set-MpPreference



D. Set-DtcAdvancedSetting

Correct Answer: C

<https://technet.microsoft.com/en-us/itpro/powershell/windows/defender/set-mppreference>

[Latest 70-744 Dumps](#)

[70-744 PDF Dumps](#)

[70-744 VCE Dumps](#)



To Read the [Whole Q&As](#), please purchase the [Complete Version](#) from [Our website](#).

Try our product !

- 100% Guaranteed Success
- 100% Money Back Guarantee
- 365 Days Free Update
- Instant Download After Purchase
- 24x7 Customer Support
- Average 99.9% Success Rate
- More than 800,000 Satisfied Customers Worldwide
- Multi-Platform capabilities - [Windows](#), [Mac](#), [Android](#), [iPhone](#), [iPod](#), [iPad](#), [Kindle](#)

We provide exam PDF and VCE of Cisco, Microsoft, IBM, CompTIA, Oracle and other IT Certifications. You can view Vendor list of All Certification Exams offered:

<https://www.geekcert.com/allproducts>

Need Help

Please provide as much detail as possible so we can best assist you.
To update a previously submitted ticket:



 <p>One Year Free Update Free update is available within One Year after your purchase. After One Year, you will get 50% discounts for updating. And we are proud to boast a 24/7 efficient Customer Support system via Email.</p>	 <p>Money Back Guarantee To ensure that you are spending on quality products, we provide 100% money back guarantee for 30 days from the date of purchase.</p>	 <p>Security & Privacy We respect customer privacy. We use McAfee's security service to provide you with utmost security for your personal information & peace of mind.</p>
---	---	--

Any charges made through this site will appear as Global Simulators Limited.
All trademarks are the property of their respective owners.
Copyright © geekcert, All Rights Reserved.