



70-767^{Q&As}

Implementing a Data Warehouse using SQL

Pass Microsoft 70-767 Exam with 100% Guarantee

Free Download Real Questions & Answers **PDF** and **VCE** file from:

<https://www.geekcert.com/70-767.html>

100% Passing Guarantee
100% Money Back Assurance

Following Questions and Answers are all new published by Microsoft
Official Exam Center

- ⚙ **Instant Download** After Purchase
- ⚙ **100% Money Back** Guarantee
- ⚙ **365 Days** Free Update
- ⚙ **800,000+** Satisfied Customers





QUESTION 1

You are building a fact table in a data warehouse.

The table must have a columnstore index. The table cannot be partitioned.

You need to design the fact table and load it with data.

Which three actions should you perform in sequence? (To answer, move the appropriate actions from the list of actions to the answer area and arrange them in the correct order.)

Select and Place:

Load the data.

Create the columnstore index with the MAXDOP keyword.

Create the fact table.

Create the columnstore index with the INCLUDE keyword.

Create the columnstore index with the ASC keyword.

Correct Answer:

Create the fact table.

Load the data.

Create the columnstore index with the MAXDOP keyword.

Create the columnstore index with the INCLUDE keyword.

Create the columnstore index with the ASC keyword.

QUESTION 2

You are implementing a new SQL Server Integration Services (SSIS) 2016 package that loads data from various flat files and a Windows Azure SQL Database database.

Daily transactions must be loaded into a staging database. All the SSIS tasks will use the CurrentDate variable as the transaction date.



You need to set the CurrentDate variable to the current execution date when the package starts. You need to achieve this goal by using the least amount of development effort.

What should you use to set the variable?

- A. An Expression task
- B. A Script component
- C. A Script task
- D. An Execute SQL task

Correct Answer: A

Explanation: Ref: <http://msdn.microsoft.com/en-us/library/ms141214.aspx> <http://blog.sqltechie.com/2016/11/expression-task-in-ssis-2016.html>

QUESTION 3

You are designing an extract, transform, and load (ETL) solution that loads data into dimension tables. The ETL process involves many transformation steps.

You need to ensure that the design can provide:

Auditing information for compliance and business user acceptance Tracking and unique identification of records for troubleshooting and error correction

What should you do?

- A. Create a SQL Common Language Runtime (SQLCLR) component that records all transformation steps in a Microsoft SharePoint list.
- B. Create a version control repository for the transformation steps in Team Foundation Server (TFS).
- C. Develop a custom data lineage solution.
- D. Develop a Data Quality Services (DQS) solution.

Correct Answer: C

QUESTION 4

You are developing a SQL Server Integration Services (SSIS) package.

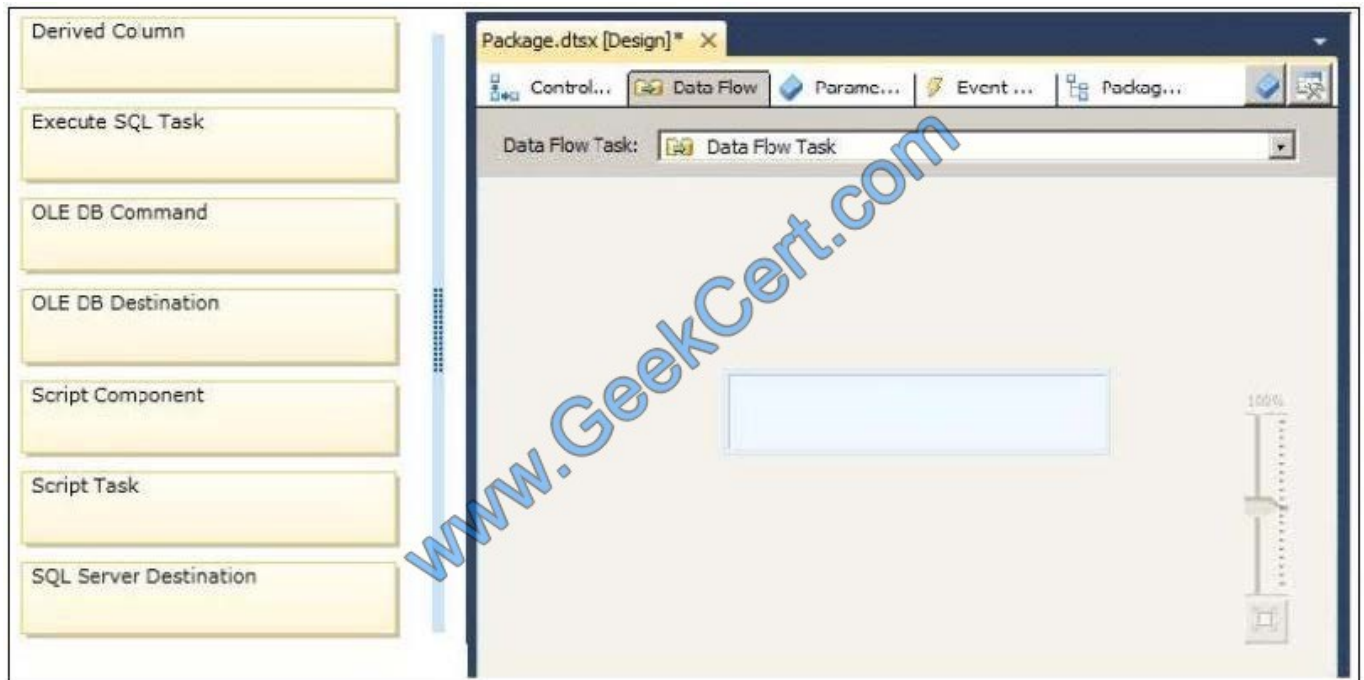
The package uses custom functionality that accesses a SQL Server database. The custom functionality must be implemented by using Language Integrated Query (LINQ).

You need to ensure that the LINQ code can be debugged at design time.

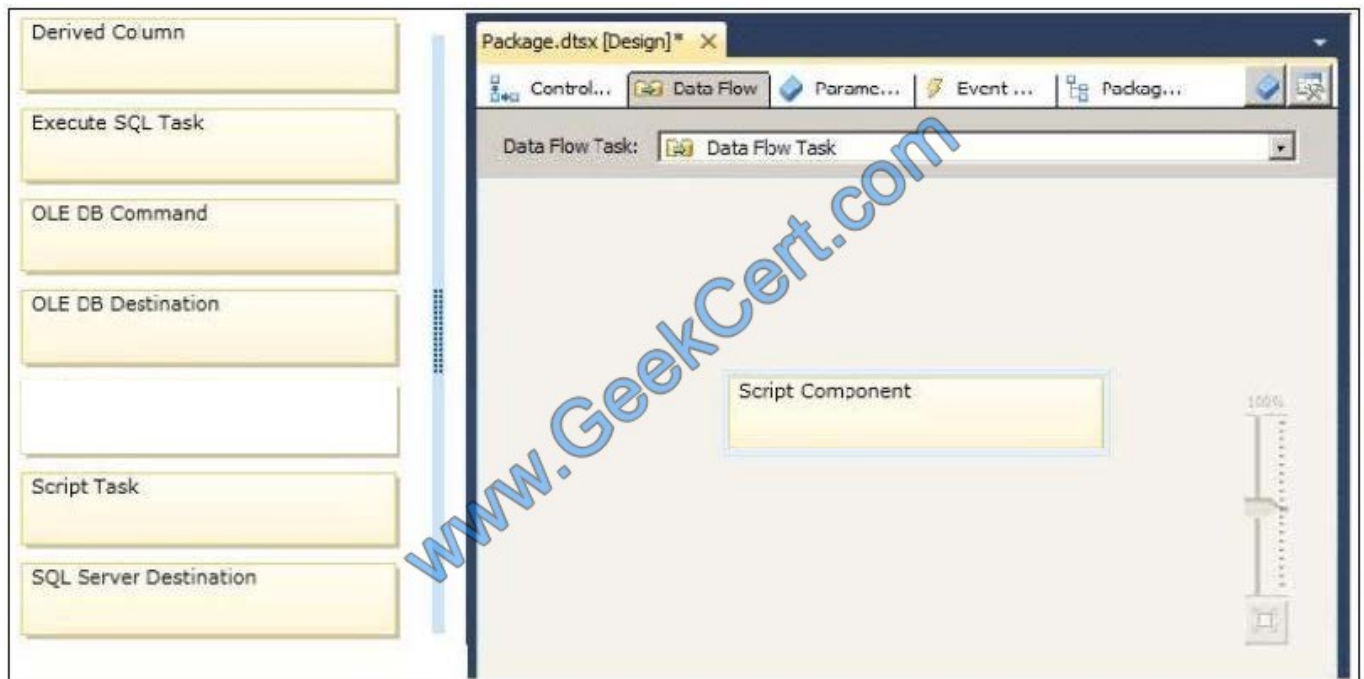
What should you select from the SSIS Toolbox? (To answer, drag the appropriate item to the correct location in the answer area.)



Select and Place:



Correct Answer:



QUESTION 5

Note: This question is part of a series of questions that present the same scenario. Each question in the series contains a unique solution that might meet the stated goals. Some question sets might have more than one correct solution,



while

others might not have a correct solution.

After you answer a question in this section, you will NOT be able to return to it. As a result, these questions will not appear in the review screen.

You are the administrator of a Microsoft SQL Server Master Data Services (MDS) instance. The instance contains a model named Geography and a model named customer. The Geography model contains an entity named countryRegion.

You need to ensure that the countryRegion entity members are available in the customer model.

Solution: In the Geography model, publish a business rule with a Change Value action.

Does the solution meet the goal?

A. Yes

B. No

Correct Answer: B

Instead configure an entity sync relationship to replicate the CountryRegion entity.

Note: In Master Data Services, a business rule is a rule that you use to ensure the quality and accuracy of your master data. You can use a business rule to automatically update data, to send email, or to start a business process or workflow.

References:

<https://docs.microsoft.com/en-us/sql/master-data-services/entity-sync-relationship-master-data-services>

[Latest 70-767 Dumps](#)

[70-767 PDF Dumps](#)

[70-767 Study Guide](#)



To Read the [Whole Q&As](#), please purchase the [Complete Version](#) from [Our website](#).

Try our product !

100% Guaranteed Success
100% Money Back Guarantee
365 Days Free Update
Instant Download After Purchase
24x7 Customer Support
Average 99.9% Success Rate
More than 800,000 Satisfied Customers Worldwide
Multi-Platform capabilities - [Windows](#), [Mac](#), [Android](#), [iPhone](#), [iPod](#), [iPad](#), [Kindle](#)

We provide exam PDF and VCE of Cisco, Microsoft, IBM, CompTIA, Oracle and other IT Certifications.
You can view Vendor list of All Certification Exams offered:

<https://www.geekcert.com/allproducts>

Need Help

Please provide as much detail as possible so we can best assist you.
To update a previously submitted ticket:



 One Year Free Update Free update is available within One Year after your purchase. After One Year, you will get 50% discounts for updating. And we are proud to boast a 24/7 efficient Customer Support system via Email.	 Money Back Guarantee To ensure that you are spending on quality products, we provide 100% money back guarantee for 30 days from the date of purchase.	 Security & Privacy We respect customer privacy. We use McAfee's security service to provide you with utmost security for your personal information & peace of mind.
---	---	--

Any charges made through this site will appear as Global Simulators Limited.
All trademarks are the property of their respective owners.
Copyright © geekcert, All Rights Reserved.