



# 70-767<sup>Q&As</sup>

Implementing a Data Warehouse using SQL

## Pass Microsoft 70-767 Exam with 100% Guarantee

Free Download Real Questions & Answers **PDF** and **VCE** file from:

<https://www.geekcert.com/70-767.html>

100% Passing Guarantee  
100% Money Back Assurance

Following Questions and Answers are all new published by Microsoft  
Official Exam Center

- ⚙ **Instant Download** After Purchase
- ⚙ **100% Money Back** Guarantee
- ⚙ **365 Days** Free Update
- ⚙ **800,000+** Satisfied Customers





## QUESTION 1

You use SQL Server Integration Services (SSIS) for extract, transformation, load (ETL) processing.

Issues concerning addresses are discovered in the data warehouse that you manage.

Validation must separate the addresses into three categories:

Valid addresses

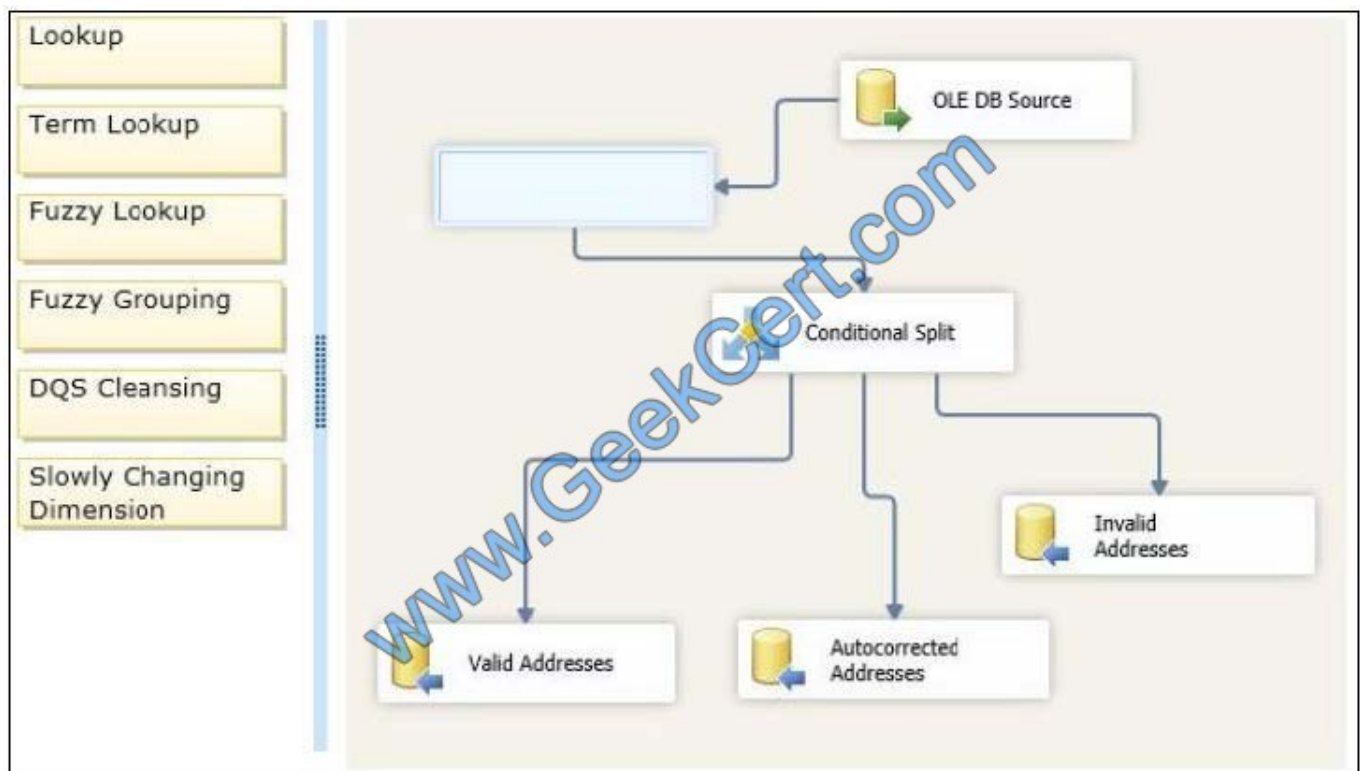
Autocorrected addresses

Invalid addresses

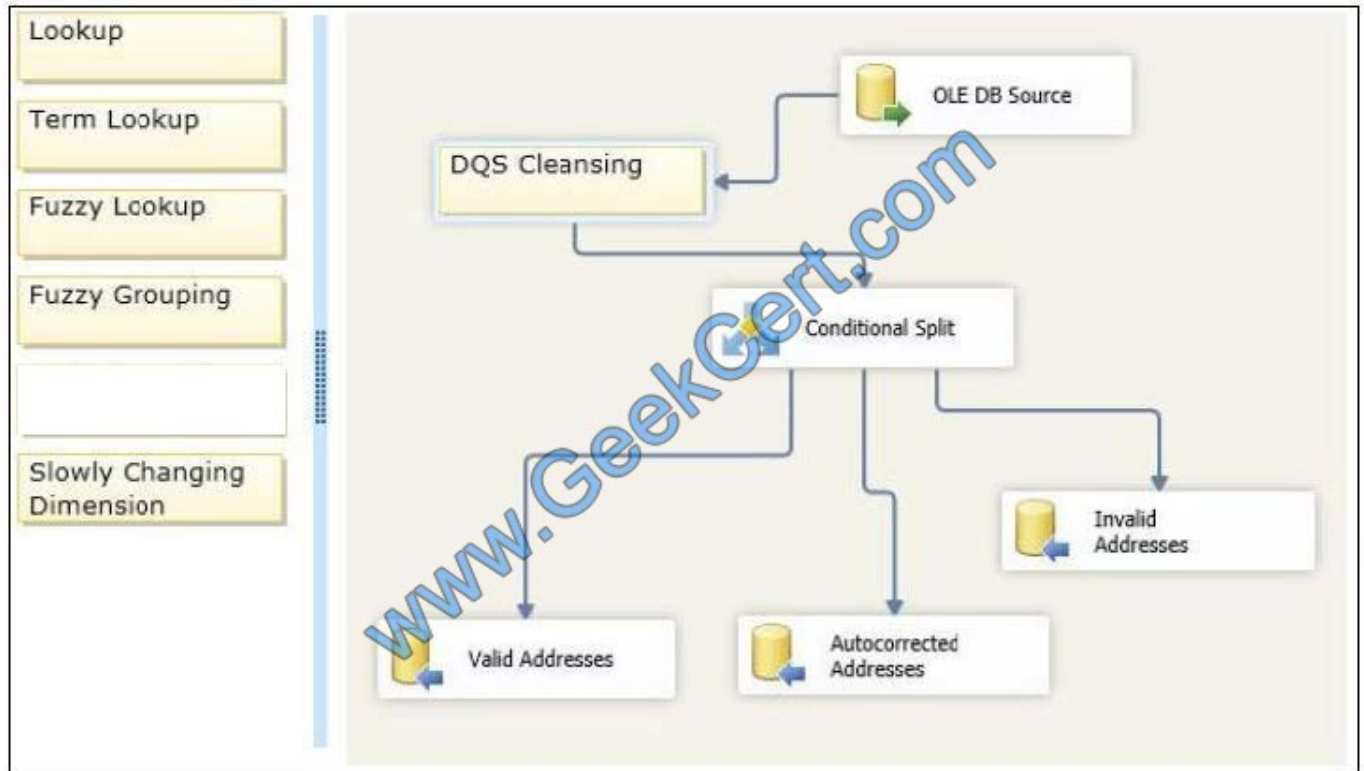
You need to enhance the SSIS packages to perform address validation by using an external service.

Which transformation should you use? (To answer, drag the appropriate transformation from the list of options to the correct location or locations in the answer area.)

Select and Place:



Correct Answer:



## QUESTION 2

You are designing an extract, transform, load (ETL) process with SQL Server Integration Services (SSIS). Two packages, Package A and Package B, will be designed. Package A will execute Package B.

Both packages must reference a file path corresponding to an input folder where files will be located for further processing.

You need to design a solution so that the file path can be easily configured with the least administrative and development effort.

Which four actions should you perform in sequence? (To answer, move the appropriate actions from the list of actions to the answer area and arrange them in the correct order.)

Select and Place:



Create one SSIS project containing only <b>Package A</b> and another SSIS project containing only <b>Package B</b> .	
Add a <b>Parent Package Variable</b> configuration in <b>Package B</b> to set the <b>FilePath</b> variable.	
Add a package parameter named <b>FilePath</b> to <b>Package A</b> and <b>Package B</b> .	
Add a configuration file in <b>Package A</b> to set the <b>FilePath</b> value.	
Configure the project to use an Environment that sets the <b>FilePath</b> parameter.	
Deploy the project to the SSIS catalog.	
Create an SSIS project containing <b>Package A</b> and <b>Package B</b> .	
Add a project parameter named <b>FilePath</b> .	

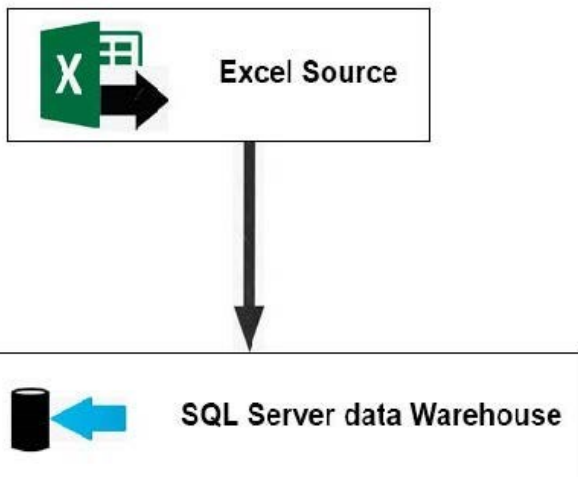
Correct Answer:

Create one SSIS project containing only <b>Package A</b> and another SSIS project containing only <b>Package B</b> .		Create an SSIS project containing <b>Package A</b> and <b>Package B</b> .
Add a <b>Parent Package Variable</b> configuration in <b>Package B</b> to set the <b>FilePath</b> variable.		Add a project parameter named <b>FilePath</b> .
Add a package parameter named <b>FilePath</b> to <b>Package A</b> and <b>Package B</b> .		Deploy the project to the SSIS catalog.
Add a configuration file in <b>Package A</b> to set the <b>FilePath</b> value.		Configure the project to use an Environment that sets the <b>FilePath</b> parameter.

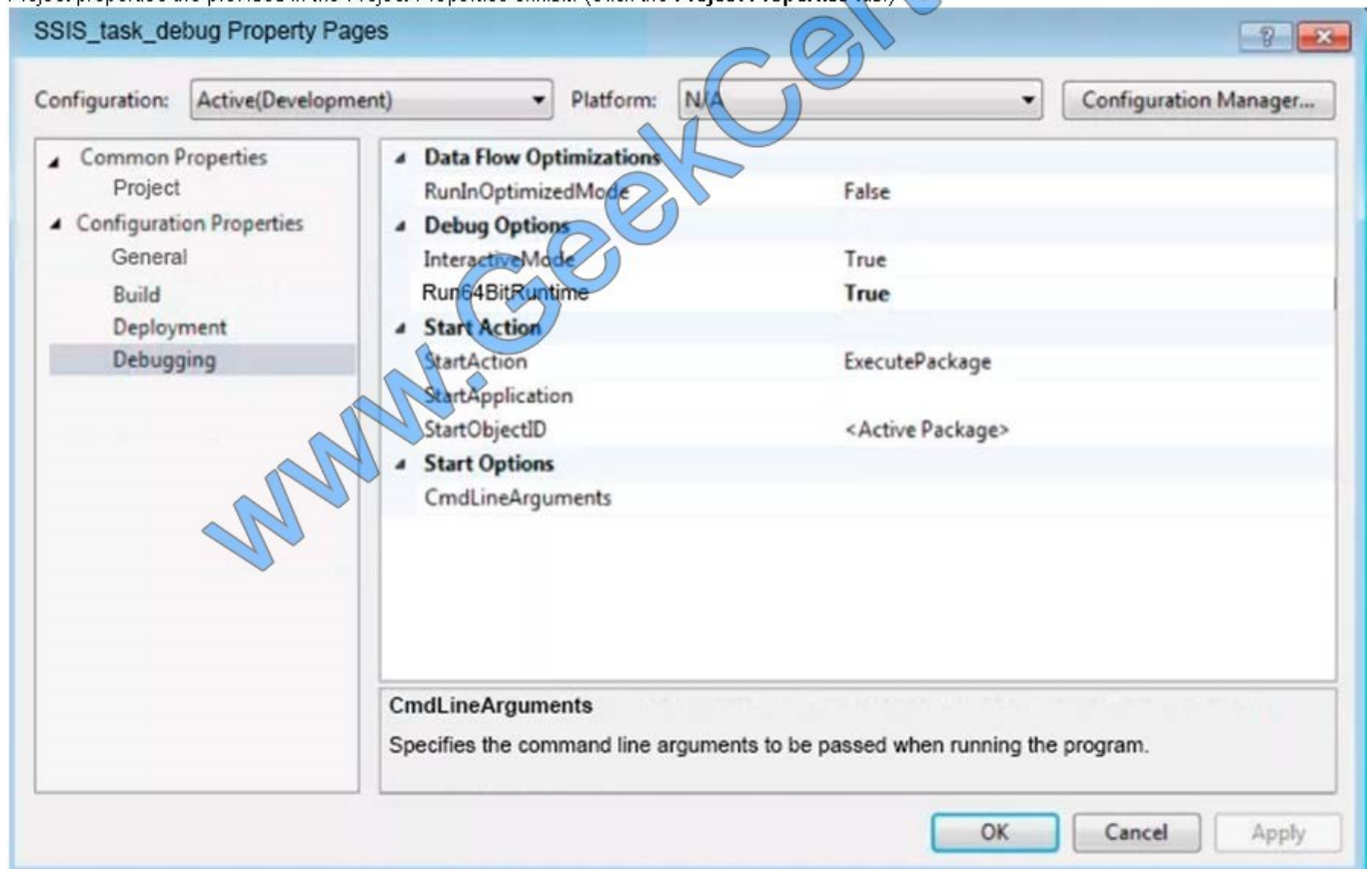
### QUESTION 3

#### HOTSPOT

You are using Microsoft SQL Server data Tools (SSID) to create a SQL Server Information Services (SSIS) package. The package contains a single Data Flow task as shown in the Data Flow exhibit. (Click the Data Flow tab.)



Project properties are provided in the Project Properties exhibit. (Click the **Project Properties** tab.)



Project properties are provided in the Project Properties exhibit. (Click the Project Properties tab.)

The data flow imports a remote Microsoft Excel file if it exists. You have all of the appropriate permissions to access the file. The package fails to complete. The error message is shown in the Execution Results exhibit. (Click the Execution Results tab.) Execution Results





- Validation has started
- Task Data Flow Task
- Validation has started
  - [SSIS.Pipeline] Information: Validation phase is beginning.
  - Progress: Validating - 0 percent complete
  - [Excel Source [2]] Error: SSIS Error Code DTS\_E\_CANNOTACQUIRECONNECTIONFROMCONNECTIONNAMAGER.
  - [SSIS.Pipeline] Error: Excel Source fails validation and returned error code 0xC020801C.
  - Progress: Validating - 50 percent complete
  - [SSIS.Pipeline] Error: One or more component failed validation.
  - Error: There were errors during task validation.
  - Validation is completed
  - [Connection manager «Excel Connection Manager»] Error: The requested OLE DB provider Microsoft.Jet.OLEDB.4.0 is not registered.
  - Validation is completed

You need to resolve the issue and ensure that you can run the package on a scheduled basis.

For each of the following statements, select Yes if the statement is true. otherwise, select No.

Hot Area:

**Answer Area**

**Yes**

**No**

You must relaunch SSDT with administrative rights.

☐☐

You must change the value for the Run64BitRuntime project property.

☐☐

You must change the destination type.

☐☐

Correct Answer:

**Answer Area**

**Yes**

**No**

You must relaunch SSDT with administrative rights.

☒☐

You must change the value for the Run64BitRuntime project property.

☒☐

You must change the destination type.

☐☒

These steps should be tried in the following order until the issue is resolved. Make sure the Jet Data Manager and Excel have the same bit-rate. If Excel is 32-bit, you will need to install the 32-bit version of the Jet Data Manager. If Excel is 64-bit, you will need to install the 64-bit version of the Jet Data Manager. Install Microsoft Access Database Engine 2010 Redistributable. These components can be found here: Microsoft Access Database Engine 2010 Redistributable Ensure that you explicitly run the executable as an administrator Install 2007 Office System Driver: Data Connectivity Components. These components can be automatically downloaded here: 2007 Office System Driver: Data Connectivity



Components Ensure that you explicitly run the executable as an administrator

References: <https://support.jetglobal.com/hc/en-us/articles/219401847-Error-The-Microsoft-ACE-OLEDB-12-0-provider-is-not-registered>

#### QUESTION 4

You deploy a Microsoft Server database that contains a staging table named EmailAddress\_Import. Each night, a bulk process will import customer information from an external database, cleanse the data, and then insert it into the

EmailAddress table.

Both tables contain a column named EmailAddressValue that stores the email address.

You need to implement the logic to meet the following requirements:

Email addresses that are present in the EmailAddress\_Import table but not in the EmailAddress table must be inserted into the EmailAddress table.

Email addresses that are not in the EmailAddress\_Import but are present in the EmailAddress table must be deleted from the EmailAddress table.

How should you complete the Transact-SQL statement? To answer, drag the appropriate Transact-SQL segments to the correct locations. Each Transact-SQL segment may be used once, more than once, or not at all. You may need to drag the split bar between panes or scroll to view content.

Select and Place:

#### Transact-SQL segments

EmailAddress  
EmailAddress\_Import  
NOT MATCHED BY SOURCE  
NOT MATCHED BY TARGET  
MATCHED

#### Answer area

```
MERGE [Transact-SQL segment] AS B
USING [Transact-SQL segment] AS A
ON A.EmailAddressValue = B.EmailAddressValue
WHEN [Transact-SQL segment]
THEN INSERT (EmailAddressValue) VALUES (A.EmailAddressValue)
WHEN [Transact-SQL segment]
THEN DELETE
```

Correct Answer:



### Transact-SQL segments

MATCHED

### Answer area

```
MERGE EmailAddress AS B
USING EmailAddress_Import AS A
ON A.EmailAddressValue = B.EmailAddressValue
WHEN NOT MATCHED BY TARGET
THEN INSERT (EmailAddressValue) VALUES (A.EmailAddressValue)
WHEN NOT MATCHED BY SOURCE
THEN DELETE
```

Box 1: EmailAddress The EmailAddress table is the target. Box 2: EmailAddress\_import The EmailAddress\_import table is the source. Box 3: NOT MATCHED BY TARGET Box 4: NOT MATCHED BY SOURCE References: <https://docs.microsoft.com/en-us/sql/t-sql/statements/merge-transact-sql>

### QUESTION 5

You develop a SQL Server Integration Services (SSIS) package in a project by using the Project Deployment Model. It is regularly executed within a multi-step SQL Server Agent job.

You make changes to the package that should improve performance.

You need to establish if there is a trend in the durations of the next 10 successful executions of the package. You need to use the least amount of administrative effort to achieve this goal.

What should you do?

- A. Enable logging to an XML file in the package control flow for the OnInformation event. After 10 executions, view the XML file.
- B. After 10 executions, view the job history for the SQL Server Agent job.
- C. After 10 executions, in SQL Server Management Studio, view the Execution Performance subsection of the All Executions report for the package.
- D. Enable logging to an XML file in the package control flow for the OnPostExecute event. After 10 executions, view the XML file.

Correct Answer: C

[70-767 VCE Dumps](#)

[70-767 Practice Test](#)

[70-767 Study Guide](#)





To Read the [Whole Q&As](#), please purchase the [Complete Version](#) from [Our website](#).

## Try our product !

100% Guaranteed Success

100% Money Back Guarantee

365 Days Free Update

Instant Download After Purchase

24x7 Customer Support

Average 99.9% Success Rate

More than 800,000 Satisfied Customers Worldwide

Multi-Platform capabilities - [Windows](#), [Mac](#), [Android](#), [iPhone](#), [iPod](#), [iPad](#), [Kindle](#)

We provide exam PDF and VCE of Cisco, Microsoft, IBM, CompTIA, Oracle and other IT Certifications.  
You can view Vendor list of All Certification Exams offered:

<https://www.geekcert.com/allproducts>

## Need Help

Please provide as much detail as possible so we can best assist you.

To update a previously submitted ticket:



 <b>One Year Free Update</b> <p>Free update is available within One Year after your purchase. After One Year, you will get 50% discounts for updating. And we are proud to boast a 24/7 efficient Customer Support system via Email.</p>	 <b>Money Back Guarantee</b> <p>To ensure that you are spending on quality products, we provide 100% money back guarantee for 30 days from the date of purchase.</p>	 <b>Security &amp; Privacy</b> <p>We respect customer privacy. We use McAfee's security service to provide you with utmost security for your personal information &amp; peace of mind.</p>
---	---	--

Any charges made through this site will appear as Global Simulators Limited.

All trademarks are the property of their respective owners.

Copyright © geekcert, All Rights Reserved.