



70-982^{Q&As}

Recertification for MCSE: Desktop Infrastructure

Pass Microsoft 70-982 Exam with 100% Guarantee

Free Download Real Questions & Answers **PDF** and **VCE** file from:

<https://www.geekcert.com/70-982.html>

100% Passing Guarantee
100% Money Back Assurance

Following Questions and Answers are all new published by Microsoft
Official Exam Center

-  **Instant Download** After Purchase
-  **100% Money Back** Guarantee
-  **365 Days** Free Update
-  **800,000+** Satisfied Customers





QUESTION 1

Your network contains an Active Directory domain named contoso.com. The domain contains five servers. The servers are configured as shown in the following table.

Server name	Configuration
Server1	Remote Desktop Session Host (RD Session Host)
Server2	Remote Desktop Connection Broker (RD Connection Broker)
Server3	Remote Desktop Web Access (RD Web Access)
Server4	Microsoft: Application Virtualization (App-V) publishing server
Server5	Microsoft: Application Virtualization (App-V) management server

Servers Microsoft Application Virtualization (App-V) management server

You plan to deploy three App-V applications named App1, App2, and App3 by using RemoteApp publishing. Users will access App1, App2, and App3 from the RD Web Access site.

You need to ensure that the users can run App1, App2, and App3 by clicking links to the applications from the RD Web Access site.

On which server should you install the App-V client?

- A. Server1
- B. Server2
- C. Server3
- D. Server4
- E. Server5

Correct Answer: A

QUESTION 2

Your network contains an Active Directory domain named contoso.com. The domain contains a Virtual Desktop Infrastructure (VDI) and pooled virtual desktops.

Users start virtual desktop sessions by using Remote Desktop Web Access (RD Web Access).

Some users access virtual desktops by using a Remote Desktop Gateway (RD Gateway).

You need to identify which users are connected currently to the virtual desktops.

Which tool should you use?

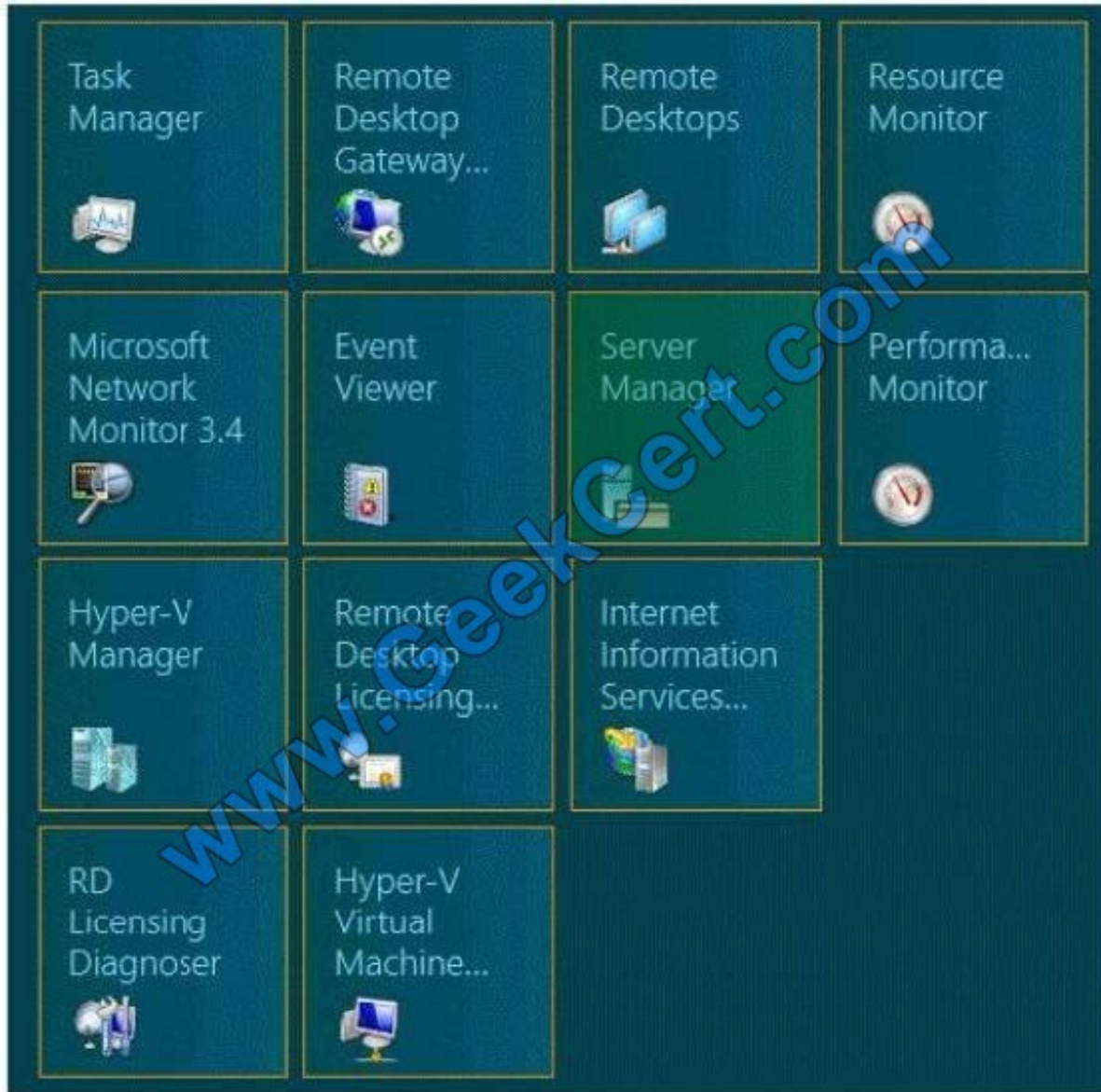


To answer, select the appropriate tool in the answer area.

Hot Area:



Correct Answer:



QUESTION 3

Your network contains an Active Directory domain named contoso.com. The domain has Remote Desktop Services (RDS) deployed.

The domain contains two servers named Server1 and Server2 that have the Remote Desktop Web Access role service installed. The RD Web Access sites are accessible by using the URL <https://rdp.contoso.com/rdweb>.

You connect to <https://rdp.contoso.com/rdweb> and you receive the error message shown in the exhibit. (Click the Exhibit button.)



You need to prevent the error message from appearing when users connect to the RD Web Access sites.

You obtain a server certificate for rdp.contoso.com from a trusted certification authority (CA).

What should you do next?

More than one answer choice may achieve the goal. Select the BEST answer.

- A. On Server1 and Server2, open the Certificates console and import the server certificate to the Trusted Publishers store.
- B. On Server1 and Server2, open the Certificates console and import the server certificate to the Remote Desktop certificate store.
- C. From Server Manager, open the properties of the RDS deployment and select the server certificate.
- D. On Server1 and Server2, open Internet Information Services (IIS) Manager and modify the bindings of the Default Web Site.

Correct Answer: C

You can click Task -> Edit Deployment Properties, in the Certificate tab, you can configure the certificate for RD Web Access. <http://social.technet.microsoft.com/Forums/windowsserver/en-US/b71b2aaf-9f00-44f8-8c7bb6d369af14c9/rd-web-access-certificate-in-server-2012-how-to-install?forum=winserverTS>



Overview

- Servers
- Collections
- QuickSessionCo...
- Test Second

QUICK START

1 Set up a Remote Desktop Se


Virtual machine-based desktop deployment


- Add RD Virtualization Host servers
- Create virtual desktop collections


LEARN MORE

DEPLOYMENT OVERVIEW
RD Connection Broker server: RDS.serverlab.com

Managed as : SERVERLAB\Administrator


RD Web Access


RD Gateway


RD Licensing

TASKS

- Edit Deployment Properties
- Connect to Another Deployment
- Refresh

Deployment Properties

Configure the deployment

Show All

- RD Gateway +
- RD Licensing +
- RD Web Access +
- Certificates -

Manage certificates

A Remote Desktop Services deployment requires certificates for server authentication, single sign-on, and establishing secure connections.

Current deployment certificate level is **Not Configured**
What is a certificate level?

Role Service	Level	Status	State
RD Connection Broker - Enable Sing	Not Configured	--	
RD Connection Broker - Publishing	Not Configured	--	
RD Web Access	Not Configured	--	
RD Gateway	Untrusted	OK	


Subject name: Not Applicable
[View Details](#)

This certificate is required to enable RemoteApp and Desktop Connection subscription and server authentication for RD Web Access.

You can update this certificate by creating a new certificate or by selecting an existing certificate.

Create new certificate...

Select existing certificate...





QUESTION 4

You need to configure a Deployment Workbench task sequence that meets the migration requirements of the London office. Which task group should you edit?

- A. Preinstall
- B. State Restore
- C. Postinstall
- D. Capture the reference machine

Correct Answer: A

The screenshot shows the '1234 Properties' dialog box in Microsoft Deployment Toolkit (MDT). The 'Task Sequence' tab is active, displaying a tree view of task groups. The 'PreInstall' group is selected, and the 'Format and Partition Disk' task is highlighted. The right pane shows the configuration for this task: Type: Format and Partition Disk, Name: Format and Partition Disk, Description: (empty), Disk number: 0, Disk type: Standard (MBR), and 'Create extra 'Active' partition' checked. The 'Volume' field is empty. The Microsoft logo and 'Solution Accelerators' are visible at the bottom.



QUESTION 5

Your network contains an Active Directory domain named contoso.com.

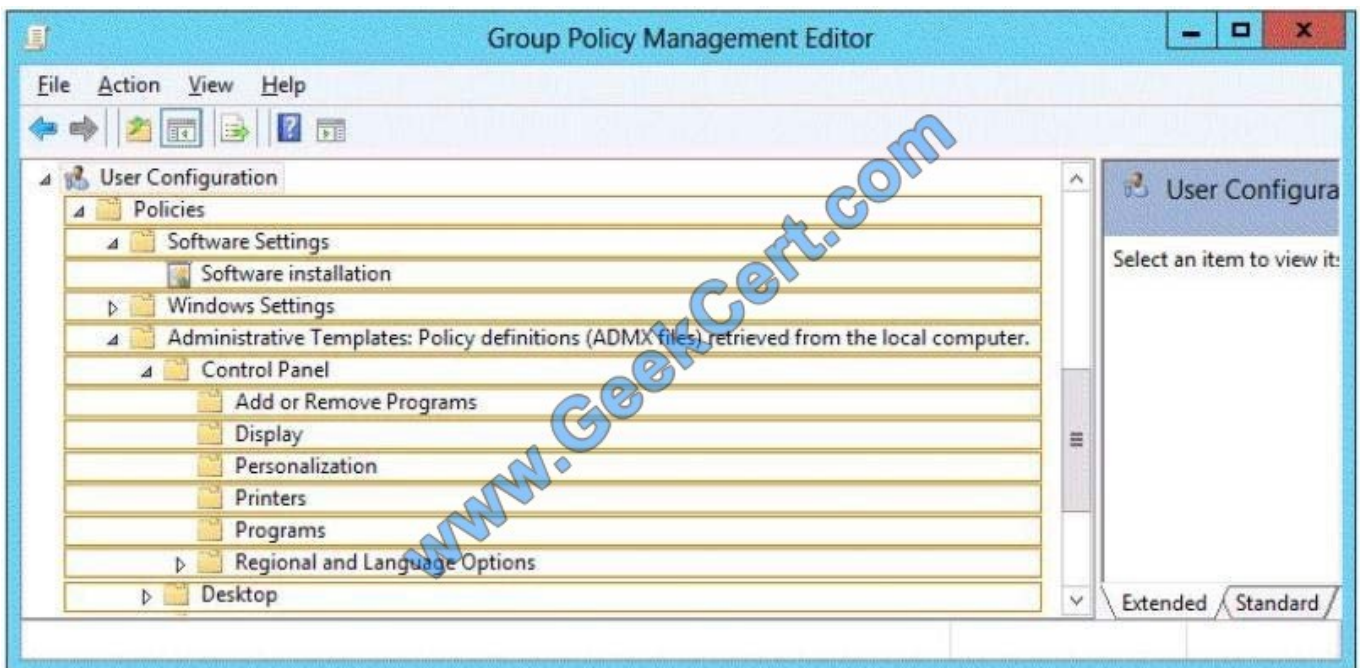
You use a Group Policy object (GPO) named GP01 to deploy applications to the domain users.

You need to create software categories that will be used to group the applications that are displayed in Programs and Features.

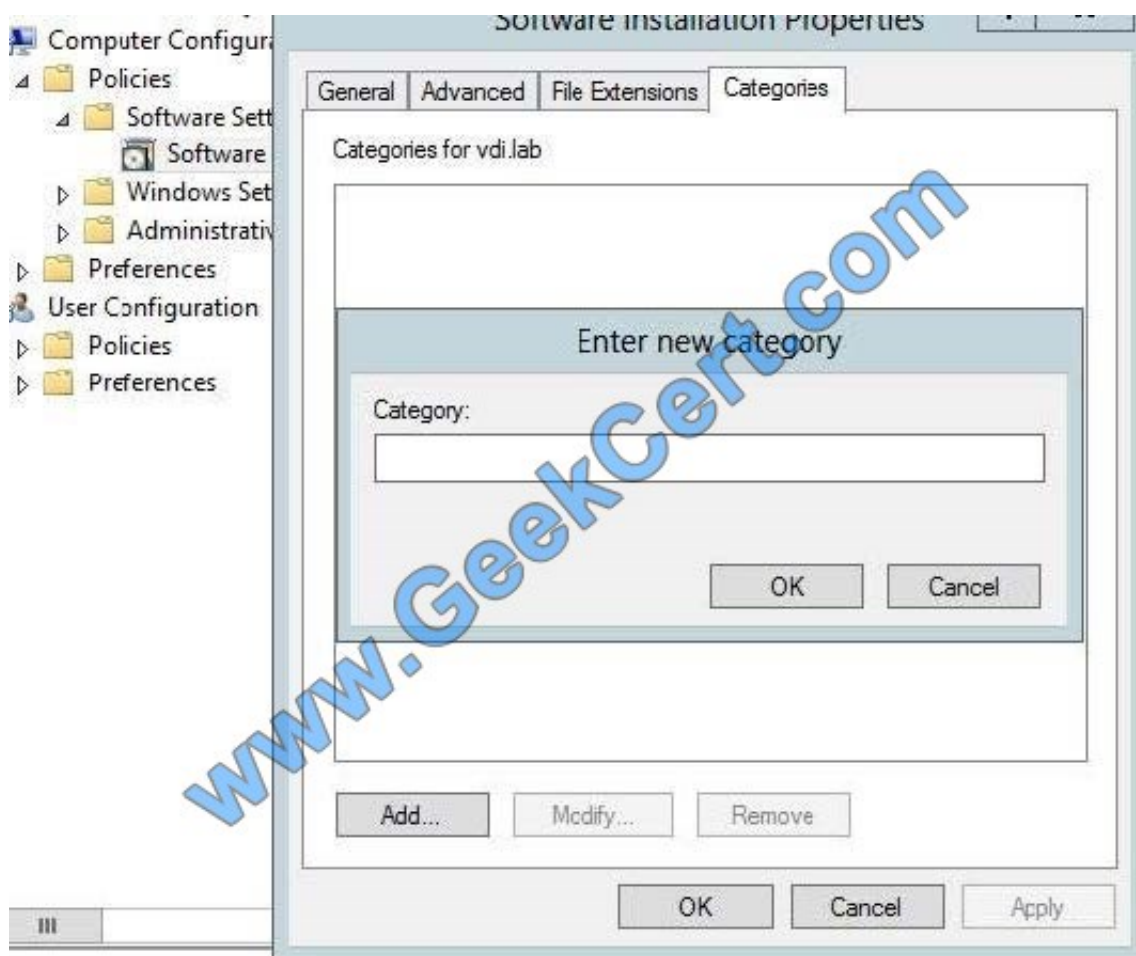
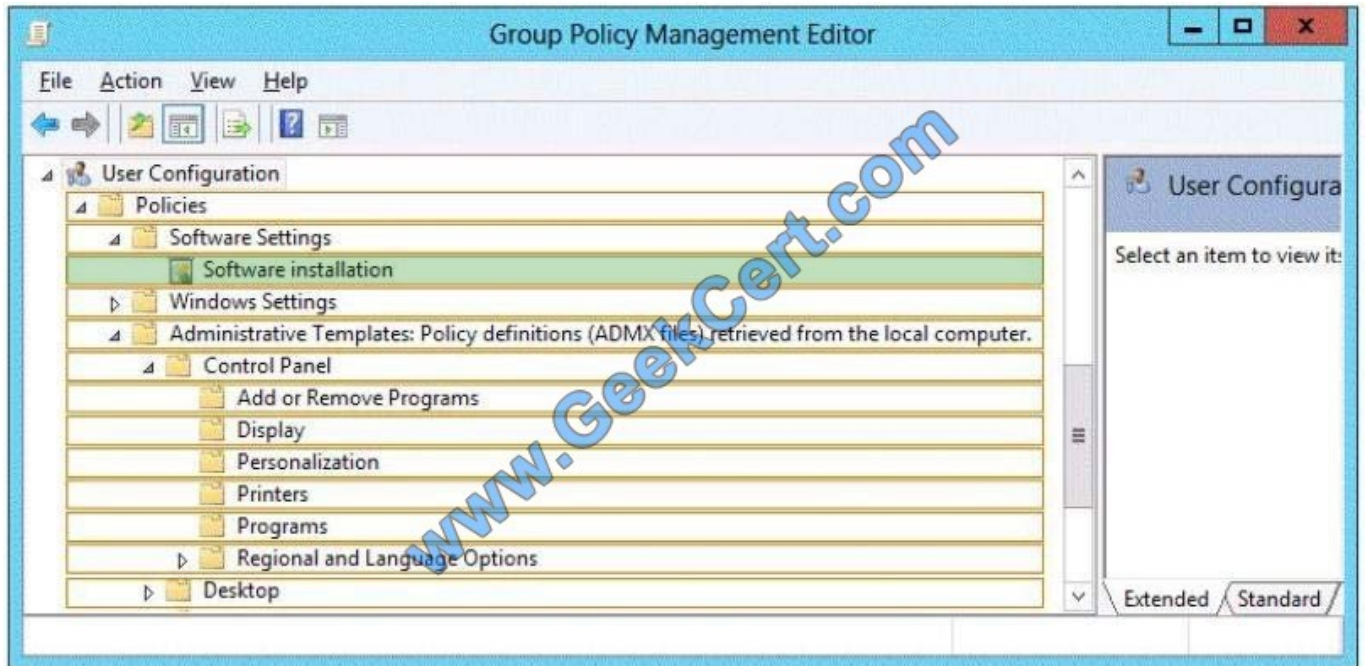
Which setting in GPO1 should you configure?

To answer, select the appropriate node in Group Policy Management Editor in the answer area.

Hot Area:



Correct Answer:





VCE & PDF

GeekCert.com

<https://www.geekcert.com/70-982.html>

2022 Latest geekcert 70-982 PDF and VCE dumps Download

[70-982 Practice Test](#)

[70-982 Study Guide](#)

[70-982 Braindumps](#)



To Read the [Whole Q&As](#), please purchase the [Complete Version](#) from [Our website](#).

Try our product !

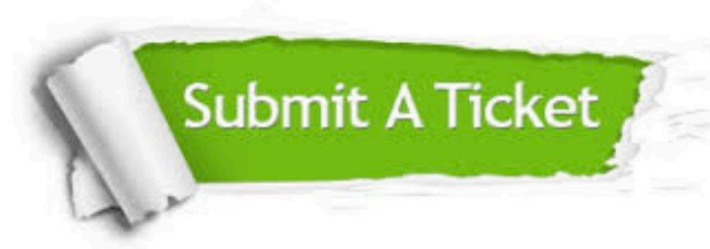
- 100% Guaranteed Success
- 100% Money Back Guarantee
- 365 Days Free Update
- Instant Download After Purchase
- 24x7 Customer Support
- Average 99.9% Success Rate
- More than 800,000 Satisfied Customers Worldwide
- Multi-Platform capabilities - [Windows](#), [Mac](#), [Android](#), [iPhone](#), [iPod](#), [iPad](#), [Kindle](#)

We provide exam PDF and VCE of Cisco, Microsoft, IBM, CompTIA, Oracle and other IT Certifications. You can view Vendor list of All Certification Exams offered:

<https://www.geekcert.com/allproducts>

Need Help

Please provide as much detail as possible so we can best assist you.
To update a previously submitted ticket:



 <p>One Year Free Update Free update is available within One Year after your purchase. After One Year, you will get 50% discounts for updating. And we are proud to boast a 24/7 efficient Customer Support system via Email.</p>	 <p>Money Back Guarantee To ensure that you are spending on quality products, we provide 100% money back guarantee for 30 days from the date of purchase.</p>	 <p>Security & Privacy We respect customer privacy. We use McAfee's security service to provide you with utmost security for your personal information & peace of mind.</p>
---	---	--

Any charges made through this site will appear as Global Simulators Limited.
All trademarks are the property of their respective owners.
Copyright © geekcert, All Rights Reserved.