



71300X^{Q&As}

Avaya Aura Communication Applications Integration Exam

Pass Avaya 71300X Exam with 100% Guarantee

Free Download Real Questions & Answers **PDF** and **VCE** file from:

<https://www.geekcert.com/71300x.html>

100% Passing Guarantee
100% Money Back Assurance

Following Questions and Answers are all new published by Avaya
Official Exam Center

- ⚙️ **Instant Download** After Purchase
- ⚙️ **100% Money Back** Guarantee
- ⚙️ **365 Days** Free Update
- ⚙️ **800,000+** Satisfied Customers





QUESTION 1

On Avaya Session Border Controller for Enterprise (SBCE), which statement about how to examine messages with Wireshark is true?

- A. You have to start and stop the .pcap file using command line.
- B. You can start and stop a Packet Capture in the EMS web GUI and then you can open the .pcap file with Wireshark.
- C. Wireshark runs directly on Avaya Session Border Controller for Enterprise (SBCE).
- D. They cannot be examined on this version.

Correct Answer: B

Viewing the Packet Capture with Wireshark.

0.

Start a Packet Capture in the EMS web GUI.

1.

After the capture completes, click the Capture tab.

2.

Double-click on the capture file name.

3.

The File Download window opens.

4.

Click Open.

The Wireshark application opens the trace.

Note: The Wireshark call tracing tool can be used on virtual desktop for vLabs. References: Avaya Aura

Session Border Controller Enterprise Implementation and Maintenance (2012), page 468

QUESTION 2

From a remote worker's SIP Endpoint connected via Mobile Workspace, which tool is used to trace the successful way through Avaya Session Border Controller for Enterprise (SBCE) of an Invite message?

- A. traceRT
- B. traceSM
- C. traceMW



D. traceSBC

Correct Answer: B

traceSM is an interactive perl script that allows an administrator to capture, view, and save call processing activity on a Session Manager. While not as powerful or versatile as Wireshark, traceSM is absolutely essential when it comes to working with Avaya SIP. First off, it allows you to view SIP messages even if they have been encrypted with TLS.

QUESTION 3

You want to multiplex all remote workers SIP messages to Avaya Aura Session Manager (SM) over the same TCP connection, rather than open a dedicated TCP connection for each user. Which feature needs to be enabled for Avaya Session Border Controller for Enterprise (SBCE)?

A. the Enable Grooming feature in the Advanced tab of the Avaya Aura Session Manager (SM) Server Profile

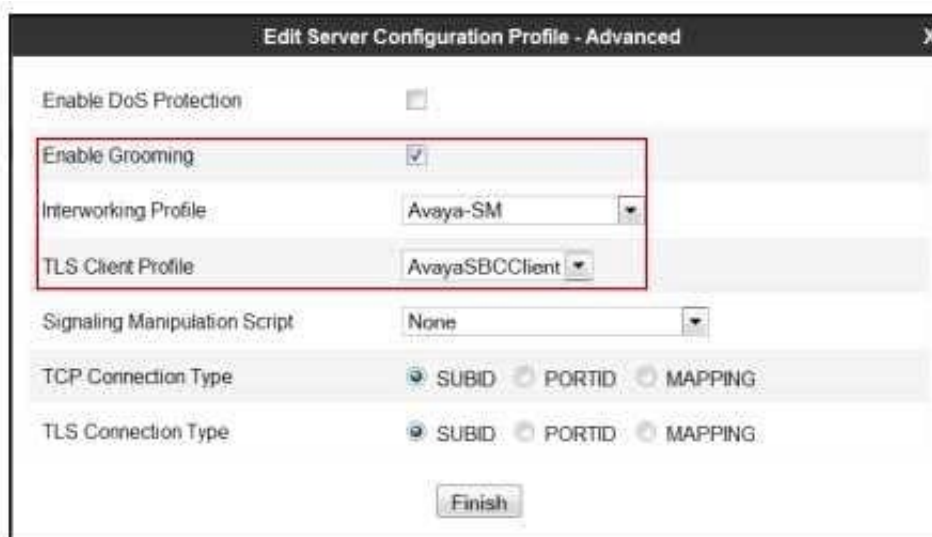
B. the Enable Shared Control feature in the Signaling Interface.

C. the Stream Users Over Transport Link feature in the Signaling Interface

D. the Share Transport Link feature in the Advanced tab of the Avaya Aura Session Manager (SM) Server Profile

Correct Answer: A

Example:



References: Configuring Remote Workers with Avaya Session Border Controller for Enterprise Rel. 6.2,

Avaya Aura Communication Manager Rel. 6.3 and Avaya Aura Session Managers Rel. 6.3 - Issue 1.0,

page 36

<https://downloads.avaya.com/css/P8/documents/100183254>

QUESTION 4



You are creating a SIP Entity for Avaya Aura Engagement Development Platform EDP / Avaya Breeze™. What do you have to enter in the field labeled FQDN or IP Address?

- A. the Management IP-Address or FQDN of the Avaya Breeze™ platform.
- B. the SM100 IP-address or FQDN of the Avaya Breeze™ platform
- C. the IP-Address or FQDN of Core Platform Cluster
- D. the IP-Address or FQDN of general Purpose Cluster

Correct Answer: A

Administering an Avaya Breeze instance Before you begin To complete this task you will need:

*

The IP address of the Avaya Breeze Management Network Interface. This is the same IP address you used when deploying the Virtual Machine (VM).

*

The IP address including the network mask, and default gateway for the Avaya Breeze Security Module.

Procedure (see step 6 below)

1.

On System Manager, in Elements, click Avaya Breeze.

2.

Click Server Administration.

3.

In the Avaya Breeze Server Instances list, click New.

4.

In the SIP Entity field, select the SIP Entity that you created.

5.

Ensure that the value in the UCID Network Node ID field is unique across the solution deployment so that it does not conflict with other UCID-generating entities like Avaya Aura Communication Manager or Avaya Aura

Experience Portal.

6.

In the Management Network Interface FQDN or IP Address field, type the IP address of the Avaya



Breeze Management Network Interface.

References: Deploying Avaya Breeze, Release 3.1, (September 2016), page 47 <https://>

downloads.avaya.com/css/P8/documents/101014426

QUESTION 5

Which access control method is used by the Avaya Aura Application Enablement Services (AES) server for administrators?

- A. Single Administrator simple password login
- B. Challenge-Response shared-key method only
- C. System Manager AES Management Menu
- D. Role-Based Access Control

Correct Answer: D

Role Based Access Control (RBAC)

Access to AE Services Management Console Web pages can be restricted by user authorization level.

The operations that users are allowed to perform such as read, edit and delete can also be restricted.

References: Avaya Aura Application Enablement Services Overview and Specification, Release 7.0.1, Issue 2 (June 2016), page 20

<https://downloads.avaya.com/css/P8/documents/101014052>

[71300X PDF Dumps](#)

[71300X VCE Dumps](#)

[71300X Practice Test](#)