



74-409^{Q&As}

Server Virtualization with Windows Server Hyper-V and System Center

Pass Microsoft 74-409 Exam with 100% Guarantee

Free Download Real Questions & Answers **PDF** and **VCE** file from:

<https://www.geekcert.com/74-409.html>

100% Passing Guarantee
100% Money Back Assurance

Following Questions and Answers are all new published by Microsoft
Official Exam Center

-  **Instant Download** After Purchase
-  **100% Money Back** Guarantee
-  **365 Days** Free Update
-  **800,000+** Satisfied Customers





QUESTION 1

You administer two Windows Server 2012 R2 servers that have the Hyper-V role installed. You use System Center 2012 Virtual Machine Manager (VMM) to manage the Hyper-V host servers. You need to create a server lab environment.

The lab servers have the following requirements:

All of the lab servers must be virtualized.

All of the lab servers must be on an isolated network.

All of the lab servers must be able to communicate with each other.

You need to configure networking for the lab environment.

What should you do?

- A. Create a logical switch.
- B. Create a media access control (MAC) pool.
- C. Add a load balancer.
- D. Create a private virtual LAN (PVLAN) logical network.

Correct Answer: D

Ref: <http://blogs.technet.com/b/scvmm/archive/2013/06/04/logical-networks-part-iv-pvlan-isolation.aspx>

QUESTION 2

You are the virtualization administrator for an organization. You manage a virtual machine (VM) by using System Center 2012 R2 Virtual Machine Manager. The VM is in a running state. You plan to use the System Preparation (Sysprep) tool

to create a virtual machine template from the VM.

You need to save a copy of the VM before you run the Sysprep tool. Which actions should you take? To answer, drag the appropriate actions to the correct locations in the answer area. Each action may be used once, more than once, or not

at all. You may need to drag the split bar between panes or scroll to view content.

Select and Place:



- pause
- shut down
- create checkpoint
- create clone
- store in library

| | Action |
|-----------------------------|--------|
| Action to perform on the VM | |
| Operator to copy the VM | |

Correct Answer:

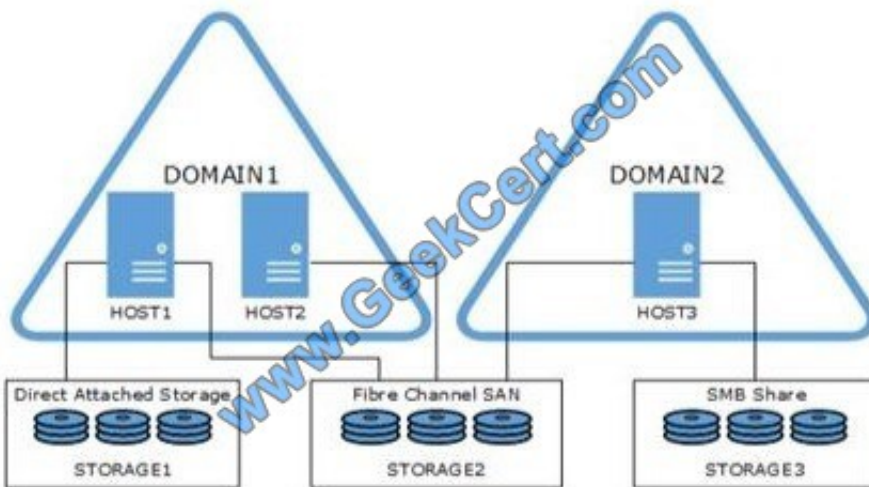
- pause
-
- create checkpoint
-
- store in library

| | Action |
|-----------------------------|--------------|
| Action to perform on the VM | shut down |
| Operator to copy the VM | create clone |

You must shut down the VM before cloning it.

QUESTION 3

A company has a Windows Server 2012 R2 Hyper-V environment that includes two separate Active Directory Domain Services (AD DS) domains. The environment also has three servers named HOST1, HOST2, and HOST3 that have the Hyper-V role installed. HOST1 and HOST2 are configured as a failover cluster. The environment is configured as shown in the following diagram:





You plan to deploy two new virtual machines named VM-Server1 and VM-Server2. You have the following requirements:

Deploy both virtual machines as a failover cluster.

Utilize virtual hard disk (VHD) sharing for the cluster.

The virtual machines must survive a host server hardware failure.

You need to deploy the virtual machines.

Use the drop-down menus to complete each statement based on the information presented in the screenshot. Each correct selection is worth one point.

Hot Area:

Where should you place the virtual machines?

Place VM-Server1 on HOST1. Place VM-Server2 on HOST2.
Place VM-Server1 on HOST1. Place VM-Server2 on HOST3.
Place VM-Server1 on HOST2. Place VM-Server2 on HOST3.

Where should you place the shared VHD?

STORAGE1
STORAGE2
STORAGE3

Correct Answer:

Where should you place the virtual machines?

Place VM-Server1 on HOST1. Place VM-Server2 on HOST2.
Place VM-Server1 on HOST1. Place VM-Server2 on HOST3.
Place VM-Server1 on HOST2. Place VM-Server2 on HOST3.

Where should you place the shared VHD?

STORAGE1
STORAGE2
STORAGE3

QUESTION 4

You plan to implement guest clustering. You review the following information:



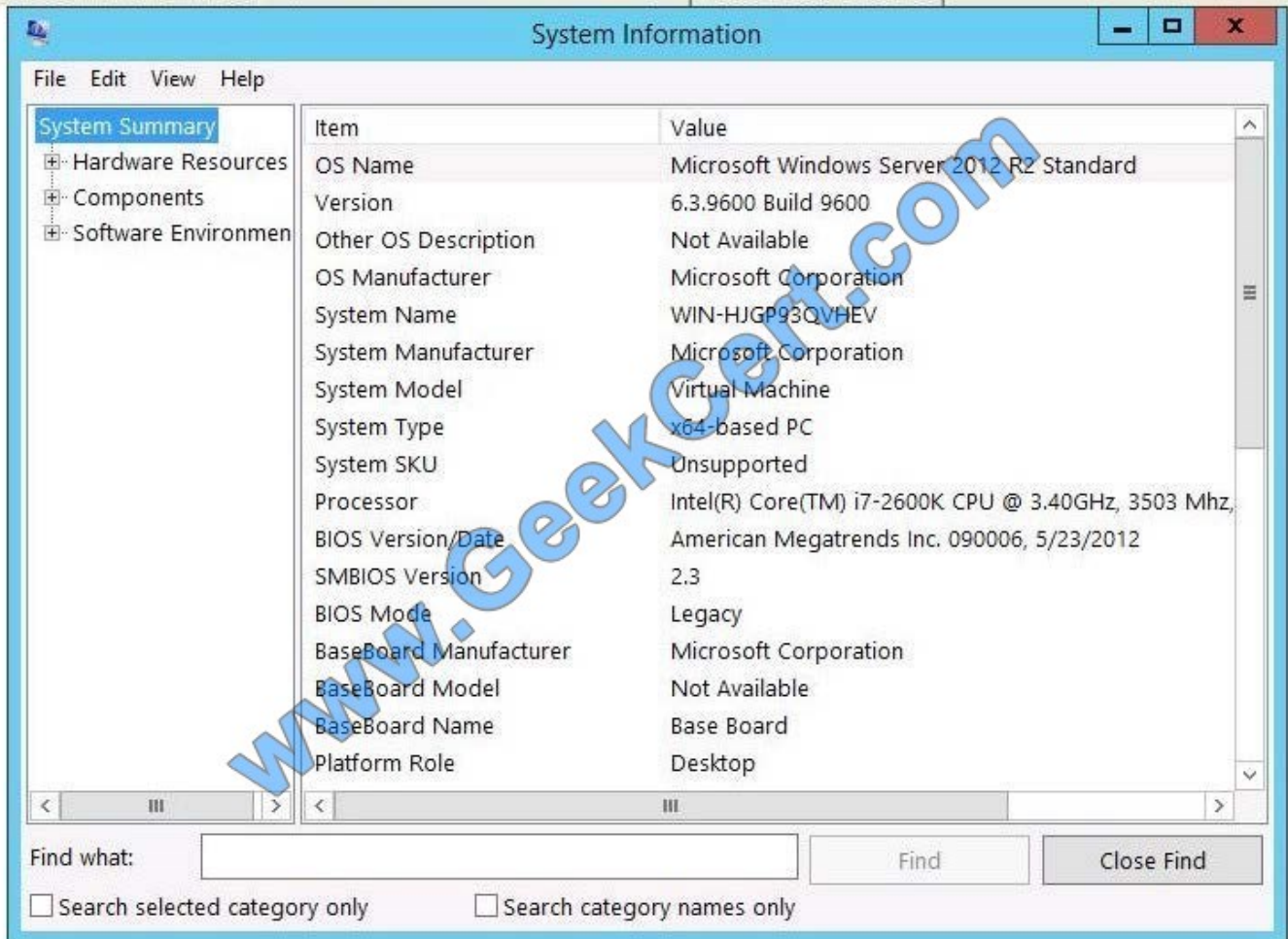
Whoami Command | System Information Settings | Features Wizard



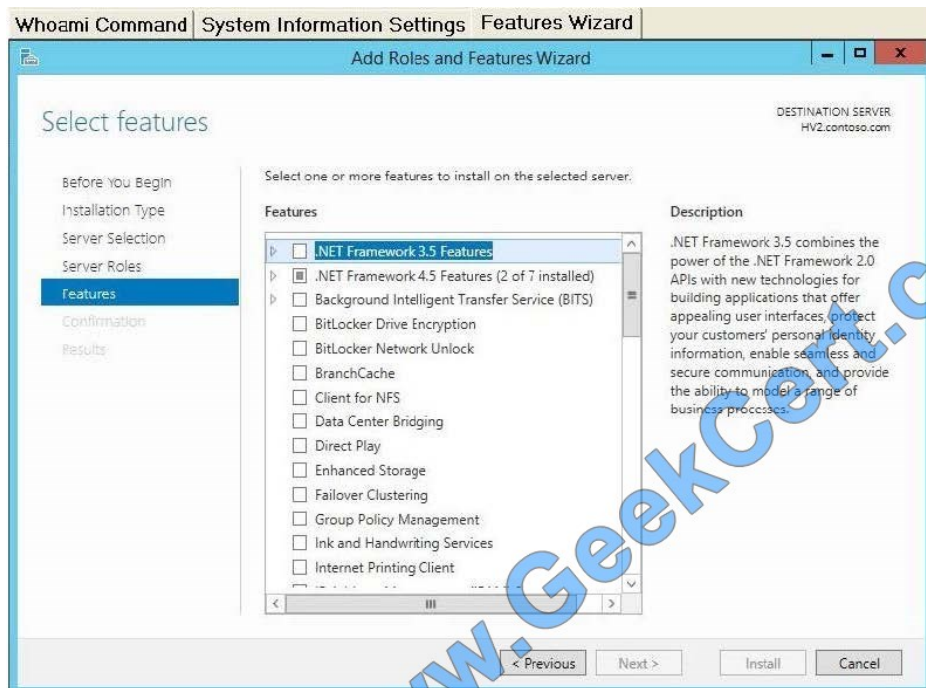
Whoami results, as shown in the Whoami Command exhibit (Click the Exhibit button.)

System information settings, as shown in the System Information Settings exhibit (Click the Exhibit button.)

Whoami Command | System Information Settings | Features Wizard



The Add Roles and Features Wizard, as shown in the Features Wizard exhibit (Click the Exhibit button.)



You need to ensure that you can implement guest clustering. For each of the following statements, select Yes if the statement is true. Otherwise, select No. Each correct selection is worth one point.

- | Yes | No | |
|-----------------------|-----------------------|-----------------------------------------------------------------|
| <input type="radio"/> | <input type="radio"/> | The server has the necessary features installed. |
| <input type="radio"/> | <input type="radio"/> | You have the required permissions. |
| <input type="radio"/> | <input type="radio"/> | The server has the necessary edition of Windows Server 2012 R2. |

You need to ensure that you can implement guest clustering. For each of the following statements, select Yes if the statement is true. Otherwise, select No. Each correct selection is worth one point.

Hot Area:

- | Yes | No | |
|-----------------------|-----------------------|-----------------------------------------------------------------|
| <input type="radio"/> | <input type="radio"/> | The server has the necessary features installed. |
| <input type="radio"/> | <input type="radio"/> | You have the required permissions. |
| <input type="radio"/> | <input type="radio"/> | The server has the necessary edition of Windows Server 2012 R2. |

Correct Answer:



- Yes No
- The server has the necessary features installed.
- You have the required permissions.
- The server has the necessary edition of Windows Server 2012 R2.

The Failover Clustering feature needs to be installed.

Ref: <http://technet.microsoft.com/en-us/library/dn265980.aspx>

QUESTION 5

A company has the following servers:

| Server Name | Description |
|-------------|-----------------------------------------------|
| SERVER1 | System Center 2012 R2 Virtual Machine Manager |
| SERVER2 | Hyper-V Host Server |
| SERVER3 | File Server |

You are implementing the virtualization storage.

You need to assign Server Message Block (SMB) 3.0 file shares to the Hyper-V host servers. Which three actions should you perform? Each answer presents part of the solution.

- A. Assign the file share to SERVER2.
- B. Add SERVER3 as a storage device.
- C. Assign the file share to SERVER1.
- D. Add SERVER2 as a storage device.
- E. Create a file share on SERVER3.
- F. Create a file share on SERVER2.

Correct Answer: ABE

B: Step 1: Add the file server (server3) as a storage device. Add a storage device--As a first step, add a storage device or Windows-based file server to the VMM console.

E: Step 2: Create a file share on the file server (server3). Create a file share--Create a file share on the Windows-based file server.



A: Step 3: Assign the share to the Host server (Server2) Assign the share--Assign the share to a virtual machine host or cluster.

Ref: <http://technet.microsoft.com/en-us/library/jj614620.aspx>

[Latest 74-409 Dumps](#)

[74-409 Practice Test](#)

[74-409 Exam Questions](#)



To Read the [Whole Q&As](#), please purchase the [Complete Version](#) from [Our website](#).

Try our product !

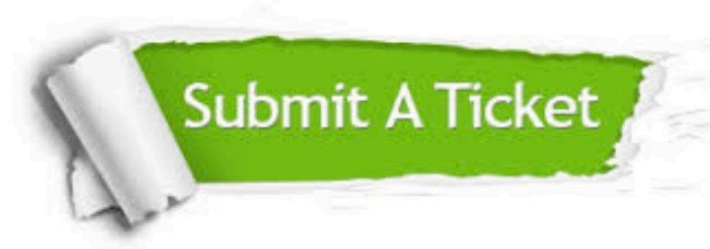
- 100% Guaranteed Success
- 100% Money Back Guarantee
- 365 Days Free Update
- Instant Download After Purchase
- 24x7 Customer Support
- Average 99.9% Success Rate
- More than 800,000 Satisfied Customers Worldwide
- Multi-Platform capabilities - [Windows](#), [Mac](#), [Android](#), [iPhone](#), [iPod](#), [iPad](#), [Kindle](#)

We provide exam PDF and VCE of Cisco, Microsoft, IBM, CompTIA, Oracle and other IT Certifications. You can view Vendor list of All Certification Exams offered:

<https://www.geekcert.com/allproducts>

Need Help

Please provide as much detail as possible so we can best assist you.
To update a previously submitted ticket:



| | | |
|---------------------------------------------------------------------------------------------------------------------------------------------------------------------------------------------------------------------------------------------------------------------------------------------------------------------------------|-------------------------------------------------------------------------------------------------------------------------------------------------------------------------------------------------------------------------------------------------------------|------------------------------------------------------------------------------------------------------------------------------------------------------------------------------------------------------------------------------------------------------------------------------------|
|  <p>One Year Free Update Free update is available within One Year after your purchase. After One Year, you will get 50% discounts for updating. And we are proud to boast a 24/7 efficient Customer Support system via Email.</p> |  <p>Money Back Guarantee To ensure that you are spending on quality products, we provide 100% money back guarantee for 30 days from the date of purchase.</p> |  <p>Security & Privacy We respect customer privacy. We use McAfee's security service to provide you with utmost security for your personal information & peace of mind.</p> |
|---------------------------------------------------------------------------------------------------------------------------------------------------------------------------------------------------------------------------------------------------------------------------------------------------------------------------------|-------------------------------------------------------------------------------------------------------------------------------------------------------------------------------------------------------------------------------------------------------------|------------------------------------------------------------------------------------------------------------------------------------------------------------------------------------------------------------------------------------------------------------------------------------|

Any charges made through this site will appear as Global Simulators Limited.
All trademarks are the property of their respective owners.
Copyright © geekcert, All Rights Reserved.