



# 74-409<sup>Q&As</sup>

Server Virtualization with Windows Server Hyper-V and System Center

## Pass Microsoft 74-409 Exam with 100% Guarantee

Free Download Real Questions & Answers **PDF** and **VCE** file from:

<https://www.geekcert.com/74-409.html>

100% Passing Guarantee  
100% Money Back Assurance

Following Questions and Answers are all new published by Microsoft  
Official Exam Center

-  **Instant Download** After Purchase
-  **100% Money Back** Guarantee
-  **365 Days** Free Update
-  **800,000+** Satisfied Customers





## QUESTION 1

You manage a virtualization environment that contains Windows Server 2012 R2 servers that have the Hyper-V role installed. You manage the host servers by using Virtual Machine Manager (VMM) in System Center 2012 R2.

You must monitor the virtualization environment, including all virtual machines and service instances.

You need to configure monitoring.

Which three actions should you perform? Each correct answer presents part of the solution.

A. Import the VMM Management Pack and then deploy agents to the Hyper-V host servers and the VMM server. On the Hyper-V host server, enable agent proxy for the Operations Manager agent.

B. In the VMM console, add the name of an Operations Manager server to the management group that will be used to monitor the virtualization infrastructure.

C. On the VMM server, install the Operations Manager console.

D. On the Operations Manager management server, enable Windows Remote Management (WinRM).

E. Import the VMM Management Pack and then deploy agents to Hyper-V host servers and the VMM Server. On the VMM server, enable agent proxy for the Operations Manager agent.

F. Configure the VMM server and the Active Directory computer accounts of the Hyper-V host servers to allow constrained delegation.

Correct Answer: ABC

<http://blogs.technet.com/b/kevinholman/archive/2012/08/21/integrating-vmm-2012-and-opsmgr-2012.aspx> Step 1: (C)

The Operations Manager is a requirement.

With System Center Operations Manager 2012 SP1, customers can now monitor Hyper-V Replica using a Management Pack available for free from the SCOM catalogue.

Step 2: (A)

An Operations Manager agent is a service that is installed on a computer. The agent collects data, compares sampled data to predefined values, creates alerts, and runs responses.

A management server receives and distributes configurations to agents on monitored computers.

Step 3: (B)

Enter in one of your management server names to provide the SDK connection to VMM. Next we will need two accounts. One for SCVMM to connect to SCOM, and one for SCOM to connect to SCVMM.

---

## QUESTION 2

You administer two Windows 2012 R2 servers named SERVER1 and SERVER2. Both servers have the Hyper-V role installed. SERVER1 has network adapters that have Remote Direct Memory Access (RDMA) enabled. You plan to



implement live migration in the environment.

You have the following requirements:

Use remote management tools to manage the live migration tasks.

Optimize network performance during live migration.

You need to configure live migration settings on each host server. In the Live Migrations section of the Hyper-V Settings window, which two options should you select? To answer, select the appropriate option buttons in the dialog box in the answer area.

Hot Area:

Advanced Features

Authentication protocol  
Select how you want to authenticate live migrations.

Use Credential Security Support Provider (CredSSP)  
You must log on to the server to perform a live migration.

Use Kerberos  
This is more secure but requires constrained delegation for live migration.

Performance options  
Select performance configuration options.

TCP/IP  
The memory of the virtual machine being migrated is copied over the network to the destination server over a TCP/IP connection.

Compression  
The memory of the virtual machine being migrated is compressed and then copied over the network to the destination server over a TCP/IP connection.

SMB  
The memory of the virtual machine being migrated is copied over the network to the destination server over a SMB connection. SMB Direct will be used if the network adapters of both the source and destination server have Remote Direct Memory Access (RDMA) capabilities enabled.

Correct Answer:



Advanced Features

Authentication protocol  
Select how you want to authenticate live migrations.

Use Credential Security Support Provider (CredSSP)  
You must log on to the server to perform a live migration.

Use Kerberos  
This is more secure but requires constrained delegation for live migration.

Performance options  
Select performance configuration options.

TCP/IP  
The memory of the virtual machine being migrated is copied over the network to the destination server over a TCP/IP connection.

Compression  
The memory of the virtual machine being migrated is compressed and then copied over the network to the destination server over a TCP/IP connection.

SMB  
The memory of the virtual machine being migrated is copied over the network to the destination server over a SMB connection. SMB Direct will be used if the network adapters of both the source and destination server have Remote Direct Memory Access (RDMA) capabilities enabled.

### QUESTION 3

A company uses System Center 2012 R2 Virtual Machine Manager (VMM). The VMM server has the following shares:

You need to configure VMM to share physical resources with private cloud users. Which three actions should you perform in sequence? To answer, move the appropriate actions from the list of actions to the answer area and arrange them in

the correct order.

Select and Place:



Grant the Authenticated Users group Read permission to the MSSCVMLibrary share.

Copy the **ApplicationFrameworks** folder from the default library to **C:\Program Files\Virtual Machine Manager\Shared**.

In \\Share1\Data, create a folder named **ApplicationFrameworks**.

In the MSSCVMLibrary share, create a folder named **ApplicationFrameworks**.

Copy the contents of the ApplicationFrameworks folder from the default library to **\\Share1\Data\ApplicationFrameworks**. Add the \\Share1\Data\ApplicationFrameworks shared folder to the VMM library.

In \\Share1, create a shared folder named **Data**.

Correct Answer:

Grant the Authenticated Users group Read permission to the MSSCVMLibrary share.

Copy the **ApplicationFrameworks** folder from the default library to **C:\Program Files\Virtual Machine Manager\Shared**.

In the MSSCVMLibrary share, create a folder named **ApplicationFrameworks**.

In \\Share1, create a shared folder named **Data**.

In \\Share1\Data, create a folder named **ApplicationFrameworks**.

Copy the contents of the ApplicationFrameworks folder from the default library to **\\Share1\Data\ApplicationFrameworks**. Add the \\Share1\Data\ApplicationFrameworks shared folder to the VMM library.

1) In \\Share1, create a shared folder named Data. 2) In \\Share1\Data, create a folder named ApplicationFrameworks  
3) Copy the contents of the ApplicationFrameworks folder from the default library to \\Share1\Data\Appli-  
cationFrameworks. Add the \\Share1\Data \ApplicationFrameworks shared folder to the VMM library Reference:  
<http://technet.microsoft.com/en-us/library/gg610575.aspx>



**QUESTION 4**

Server	Switch	VLAN ID	Description
VM-SERVER1	VirtualSwitch1	30	Lab Environment
VM-SERVER2	VirtualSwitch2	50	Production Environment

You administer a Windows Server 2012 R2 server that has the Hyper-V role installed. The host server has the following configuration:

You deploy a new lab virtual machine named VM-SERVER3. You need to ensure that VM-SERVER3 communicates only with VM-SERVER1.

Which three actions should you perform in sequence? To answer, move the appropriate actions from the list of actions to the answer area and arrange them in the correct order.

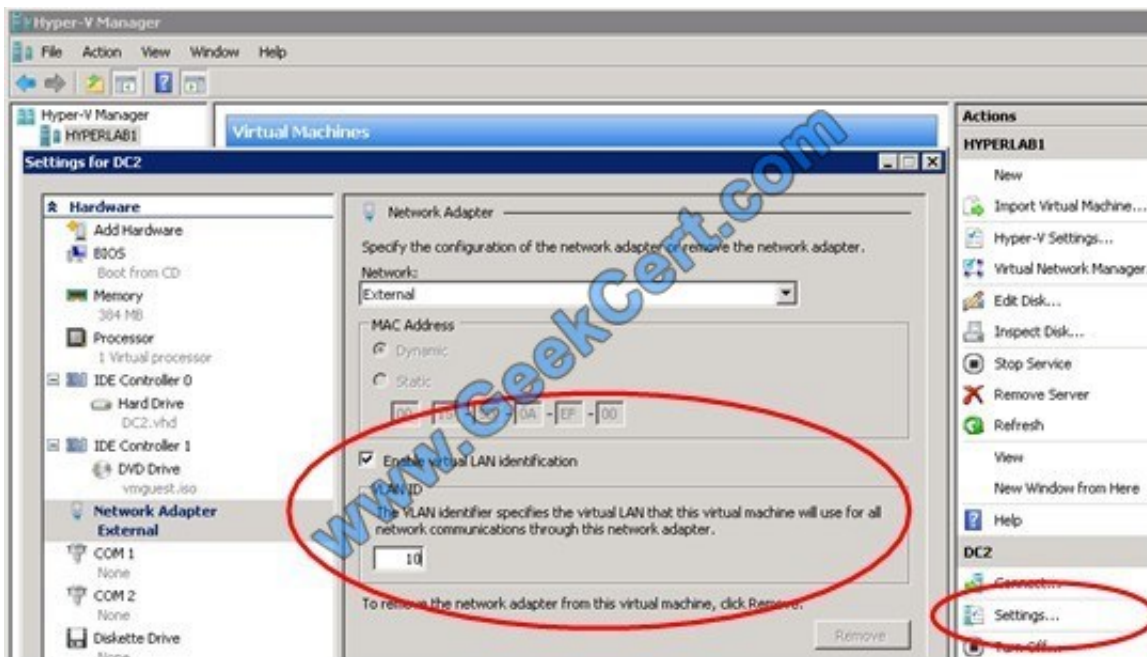
Select and Place:

- On VM-SERVER3, add a virtual network adapter and associate it with VirtualSwitch1.
- Run the Windows PowerShell cmdlet **Enable-VMSwitchExtension**.
- On VM-SERVER3, add a virtual network adapter and associate it with VirtualSwitch2.
- Enable virtual LAN (VLAN) identification.
- Configure a virtual LAN (VLAN) ID of 50.
- Configure a virtual LAN (VLAN) ID of 30.

Correct Answer:



Note:



For step 2 and step 3 refer to the diagram below.

Incorrect:

Not Enable-VMSwitchExtension: The Enable-VMSwitchExtension cmdlet enables one or more extensions on one or more switches. You can use the Get-VMSystemSwitchExtension cmdlet to enumerate the virtual switch extensions installed

on the system.

Ref: <http://blogs.msdn.com/b/adamfazio/archive/2008/11/14/understanding-hyper-v-vlans.aspx>

**QUESTION 5**

A Windows Server 2012 R2 Hyper-V host server has four network adapters that are connected to two different network switches. The server contains a virtual machine named NYC-WEB.

You have the following requirements:

increase the available bandwidth for NYC-WEB

implement network fault tolerance for NYC-WEB without modifying network switch configurations

use the least amount of administrative effort

You need to configure the Hyper-V environment. What should you do first?

- A. Enable NIC teaming. Configure the team to use Static Teaming mode.
- B. Enable NIC teaming. Configure the team to use Switch Independent mode.
- C. Enable Bandwidth Management on NYC-WEB.
- D. Run the Windows PowerShell command `Set-NetLbfoTeam -Name Team1 -TeamingMode Static`.

Correct Answer: B

Ref: <http://blogs.technet.com/b/privatecloud/archive/2012/06/19/nic-teaming-in-windows-server-2012-brings-simple-affordable-traffic-reliability-and-load-balancing-to-your-cloud-workloads.aspx>

[74-409 PDF Dumps](#)

[74-409 Practice Test](#)

[74-409 Study Guide](#)





To Read the [Whole Q&As](#), please purchase the [Complete Version](#) from [Our website](#).

## Try our product !

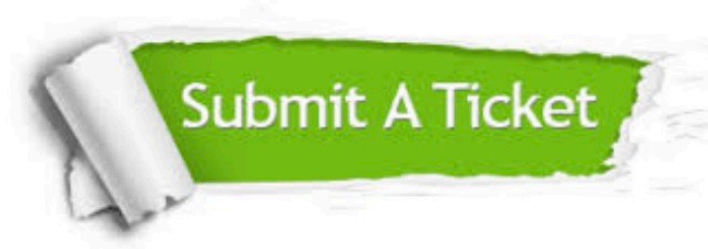
- 100% Guaranteed Success
- 100% Money Back Guarantee
- 365 Days Free Update
- Instant Download After Purchase
- 24x7 Customer Support
- Average 99.9% Success Rate
- More than 800,000 Satisfied Customers Worldwide
- Multi-Platform capabilities - [Windows](#), [Mac](#), [Android](#), [iPhone](#), [iPod](#), [iPad](#), [Kindle](#)

We provide exam PDF and VCE of Cisco, Microsoft, IBM, CompTIA, Oracle and other IT Certifications. You can view Vendor list of All Certification Exams offered:

<https://www.geekcert.com/allproducts>

## Need Help

Please provide as much detail as possible so we can best assist you.  
To update a previously submitted ticket:



 <p><b>One Year Free Update</b> Free update is available within One Year after your purchase. After One Year, you will get 50% discounts for updating. And we are proud to boast a 24/7 efficient Customer Support system via Email.</p>	 <p><b>Money Back Guarantee</b> To ensure that you are spending on quality products, we provide 100% money back guarantee for 30 days from the date of purchase.</p>	 <p><b>Security &amp; Privacy</b> We respect customer privacy. We use McAfee's security service to provide you with utmost security for your personal information &amp; peace of mind.</p>
---------------------------------------------------------------------------------------------------------------------------------------------------------------------------------------------------------------------------------------------------------------------------------------------------------------------------------	-------------------------------------------------------------------------------------------------------------------------------------------------------------------------------------------------------------------------------------------------------------	------------------------------------------------------------------------------------------------------------------------------------------------------------------------------------------------------------------------------------------------------------------------------------

Any charges made through this site will appear as Global Simulators Limited.  
All trademarks are the property of their respective owners.  
Copyright © geekcert, All Rights Reserved.