



830-01^{Q&As}

RCPE Certified Professional WAN Optimization

Pass Riverbed 830-01 Exam with 100% Guarantee

Free Download Real Questions & Answers **PDF** and **VCE** file from:

<https://www.geekcert.com/830-01.html>

100% Passing Guarantee
100% Money Back Assurance

Following Questions and Answers are all new published by Riverbed
Official Exam Center

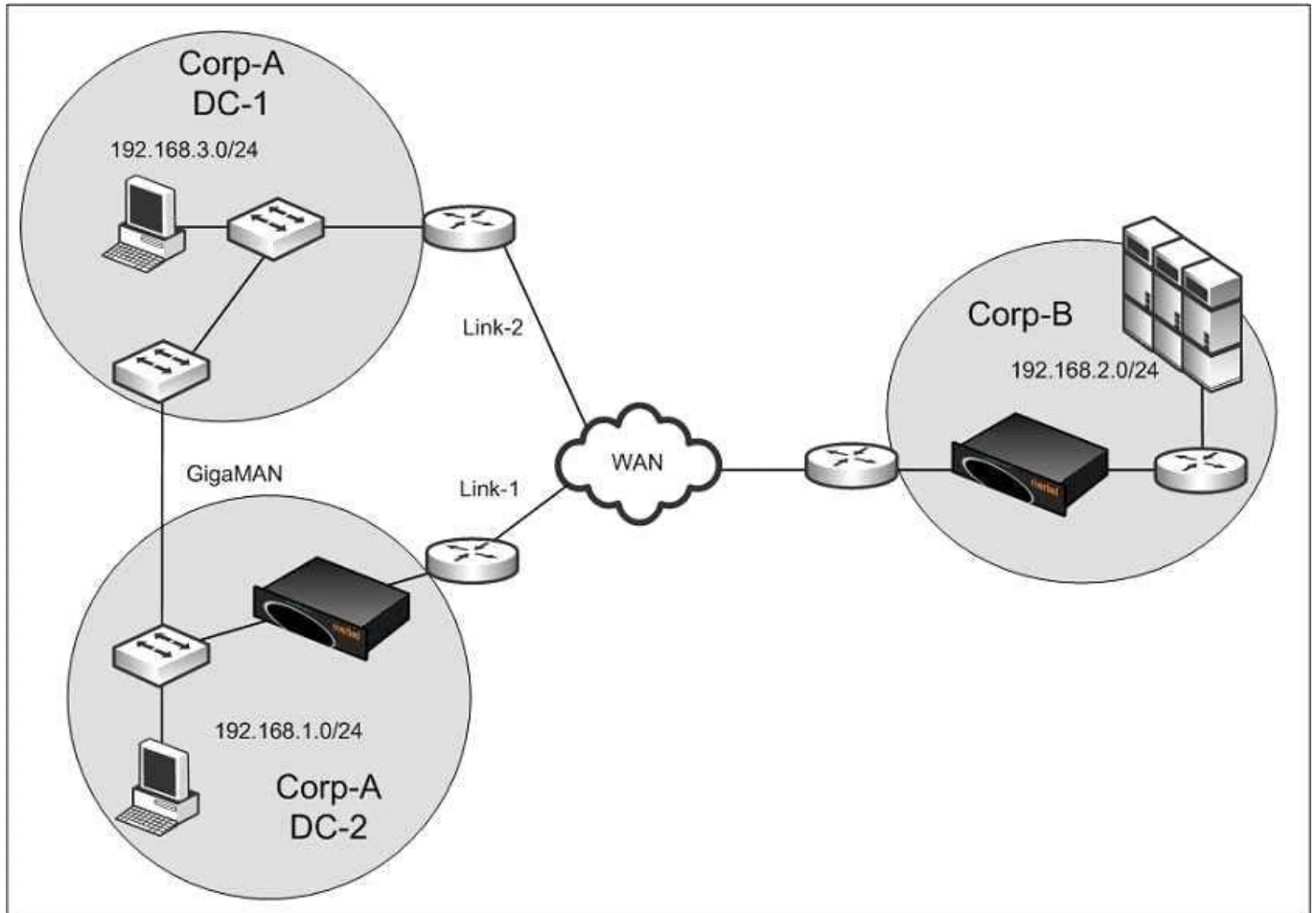
- ⚙️ **Instant Download** After Purchase
- ⚙️ **100% Money Back** Guarantee
- ⚙️ **365 Days** Free Update
- ⚙️ **800,000+** Satisfied Customers





QUESTION 1

Refer to the exhibit.



Traffic going from Corp-A-DC-2 towards Corp-B will always use Link-1. Traffic from Corp-B back to CorpA-DC-1 may traverse Corp-A-DC-1, over the GigaMAN before it reaches Corp-A-DC-2. No TCP connections are initiated from Corp-B to either Corp-A-DC-1 or Corp-A-DC-2. Unfortunately, the customer does not have any money to purchase any additional Steelheads. What are some possible fixes to ensure optimization occurs while Link-1 is operational? (If Link-1 ceases to function, optimization is not possible.) (Select 2)

- A. Configure a fixed-target rule on the Corp-A-DC-2 Steelhead pointing to the Corp-B Steelhead on port 7800
- B. On the Corp-B Steelhead, enable "in-path probe direct"
- C. On the Corp-A-DC-2 Steelhead, enable "in-path probe direct"
- D. Configure the Corp-A-DC-2 Steelhead to inject a route into the network
- E. Enable Full Transparency

Correct Answer: AC



QUESTION 2

The SteelHead Out of Band splice (OOB) uses which addressing mode? Assume a default configuration.

- A. Always correct addressing.
- B. Depends on which addressing mode the first optimized connection uses.
- C. Always transparent addressing.
- D. Always destination transparency.

Correct Answer: A

QUESTION 3

A version 9 SteelCentral Controller for SteelHead (SCC) connects to managed appliances using which protocols?

- A. SNMP
- B. SSH and HTTPS
- C. SSH and API access
- D. SSH only
- E. SNMP and SSH

Correct Answer: D

QUESTION 4

What is the purpose of 'Peer Affinity' on the Interceptor?

- A. To keep similarly sized SteelHead models peering with each other.
- B. To ensure load is distributed evenly throughout the cluster.
- C. To maximize the benefits of SDR by maintaining SteelHead peering relationships.
- D. To ensure asymmetrically routed connections are optimized.
- E. To make sure cluster SteelHeads remain connected to the same Interceptor.

Correct Answer: A

QUESTION 5

What is the first step in optimizing an SMTPS session?

- A. An unencrypted SMTP connection is intercepted and optimized, before a START-TLS is issued.



B. START-TLS is issued immediately by the client and intercepted by the client side SteelHead.

C. SteelHeads do not currently support optimizing SMTPS sessions.

D. An SSL client HELLO is sent by the client and intercepted by the client side SteelHead.

Correct Answer: A

[830-01 PDF Dumps](#)

[830-01 VCE Dumps](#)

[830-01 Study Guide](#)