



98-366^{Q&As}

Networking Fundamentals

Pass Microsoft 98-366 Exam with 100% Guarantee

Free Download Real Questions & Answers **PDF** and **VCE** file from:

<https://www.geekcert.com/98-366.html>

100% Passing Guarantee
100% Money Back Assurance

Following Questions and Answers are all new published by Microsoft
Official Exam Center

- ⚙️ **Instant Download** After Purchase
- ⚙️ **100% Money Back** Guarantee
- ⚙️ **365 Days** Free Update
- ⚙️ **800,000+** Satisfied Customers





QUESTION 1

At Ethernet 1000BaseT network is wired as a physical star using switches. What is the logical topology?

- A. mesh
- B. ring
- C. bus
- D. star

Correct Answer: D

QUESTION 2

If a router cannot determine the next hop for a packet, the router will:

- A. Forward the packet to the default route.
- B. Send the packet back to the packet's source.
- C. Broadcast the packet.
- D. Store the packet in the memory buffer.

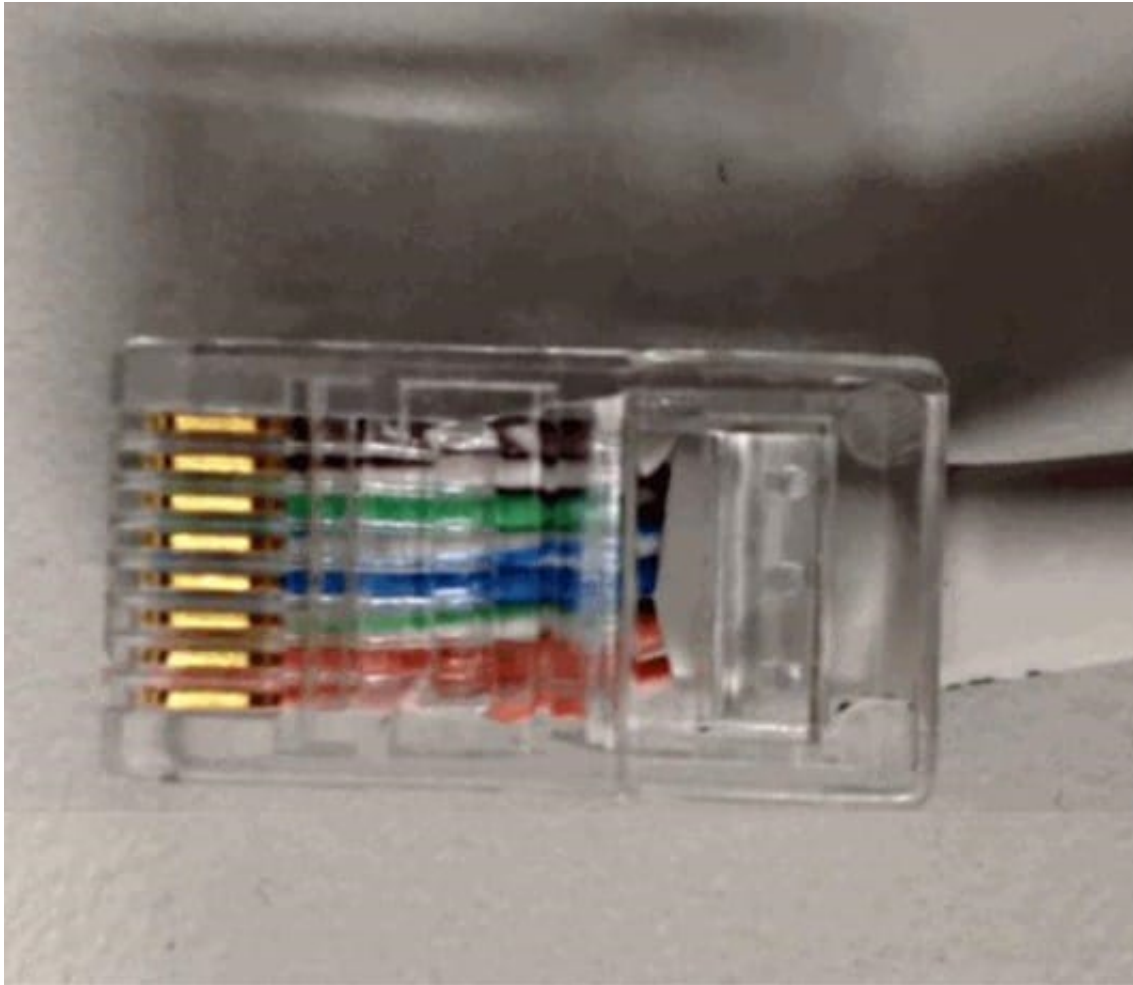
Correct Answer: A

If there is no next hop, the packets are not policy routed.

A default route of a computer that is participating in computer networking is the packet forwarding rule (route) taking effect when no other route can be determined for a given Internet Protocol (IP) destination address.

QUESTION 3

Identify the network cable type and connector in the following graphic:



Use the drop-down menus to select the answer choice that answers each question. Each correct selection is worth one point.

Hot Area:

Answer Area

Connector type	<div><div></div><div>RJ45</div><div>RJ11</div><div>FDDI</div></div>
Cable type	<div><div></div><div>Ethernet</div><div>Cat3</div><div>Fiber Optic</div></div>

Correct Answer:

**Answer Area**

Connector type	<div><div></div><div>RJ45</div><div>RJ11</div><div>FDDI</div></div>
Cable type	<div><div></div><div>Ethernet</div><div>Cat3</div><div>Fiber Optic</div></div>

QUESTION 4

In addition to switching, multilayer switches also:

- A. Provide Layer 3 routing functions.
- B. Interface with CAT3, CAT5e, and fiber optics.
- C. Support 10 MB, 100 MB, and 1 GB local area network (LAN) ports.
- D. Operate by using only Layer 1 and 2 protocols.

Correct Answer: A

QUESTION 5

Match the networking topologies to their corresponding characteristics.

To answer, drag the appropriate topology from the column on the left to its characteristic on the right. Each topology may be used once, more than once, or not at all. Each correct match is worth one point.

Select and Place:



Topologies

Star
Mesh
Ring

Answer Area

Each computer is connected by a single cable.

Each workstation acts as a repeater.

Each computer is connected to every other computer.

There is a central connectivity device.

The number of connections equals the total number of computers minus one.

Each node is connected to exactly two other nodes.

Topology

Topology

Topology

Topology

Topology

Topology

Correct Answer:



Topologies

Star

Mesh

Ring

Answer Area

Each computer is connected by a single cable.

Star

Each workstation acts as a repeater.

Ring

Each computer is connected to every other computer.

Mesh

There is a central connectivity device.

Star

The number of connections equals the total number of computers minus one.

Mesh

Each node is connected to exactly two other nodes.

Ring

[98-366 PDF Dumps](#)

[98-366 Practice Test](#)

[98-366 Study Guide](#)