



9A0-142^{Q&As}

Adobe InDesign CS5 ACE Exam

Pass Adobe 9A0-142 Exam with 100% Guarantee

Free Download Real Questions & Answers **PDF** and **VCE** file from:

<https://www.geekcert.com/9a0-142.html>

100% Passing Guarantee
100% Money Back Assurance

Following Questions and Answers are all new published by Adobe
Official Exam Center

-  **Instant Download** After Purchase
-  **100% Money Back** Guarantee
-  **365 Days** Free Update
-  **800,000+** Satisfied Customers





QUESTION 1

Which of the following allows you to resize several objects that have commonly aligned edges simultaneously, while keeping the gaps between them fixed?

- A. Gradient panel
- B. Align panel
- C. Gap tool
- D. Glyph panel

Correct Answer: C

A gap tool is used to adjust the size of a gap between two or more objects. It also allows a user to resize several objects that have commonly aligned edges simultaneously, while keeping the gaps between them fixed. It is a one-step way to

adjust the layout by directly manipulating the space between objects.

Answer: B is incorrect. The Align panel is used to align or distribute objects horizontally or vertically along the selection, margins, page, or spread. To open the Align panel a user should use the following command: Window > Object and Layout

> Align The Align panel does not affect objects to which the Lock Position command is applied, and does not change the alignment of text paragraphs within their frames.

Answer: A is incorrect. The Gradient panel is useful for creating an unnamed gradient that will not be used often.

Answer: D is incorrect. The Glyphs panel is used to enter glyphs.

QUESTION 2

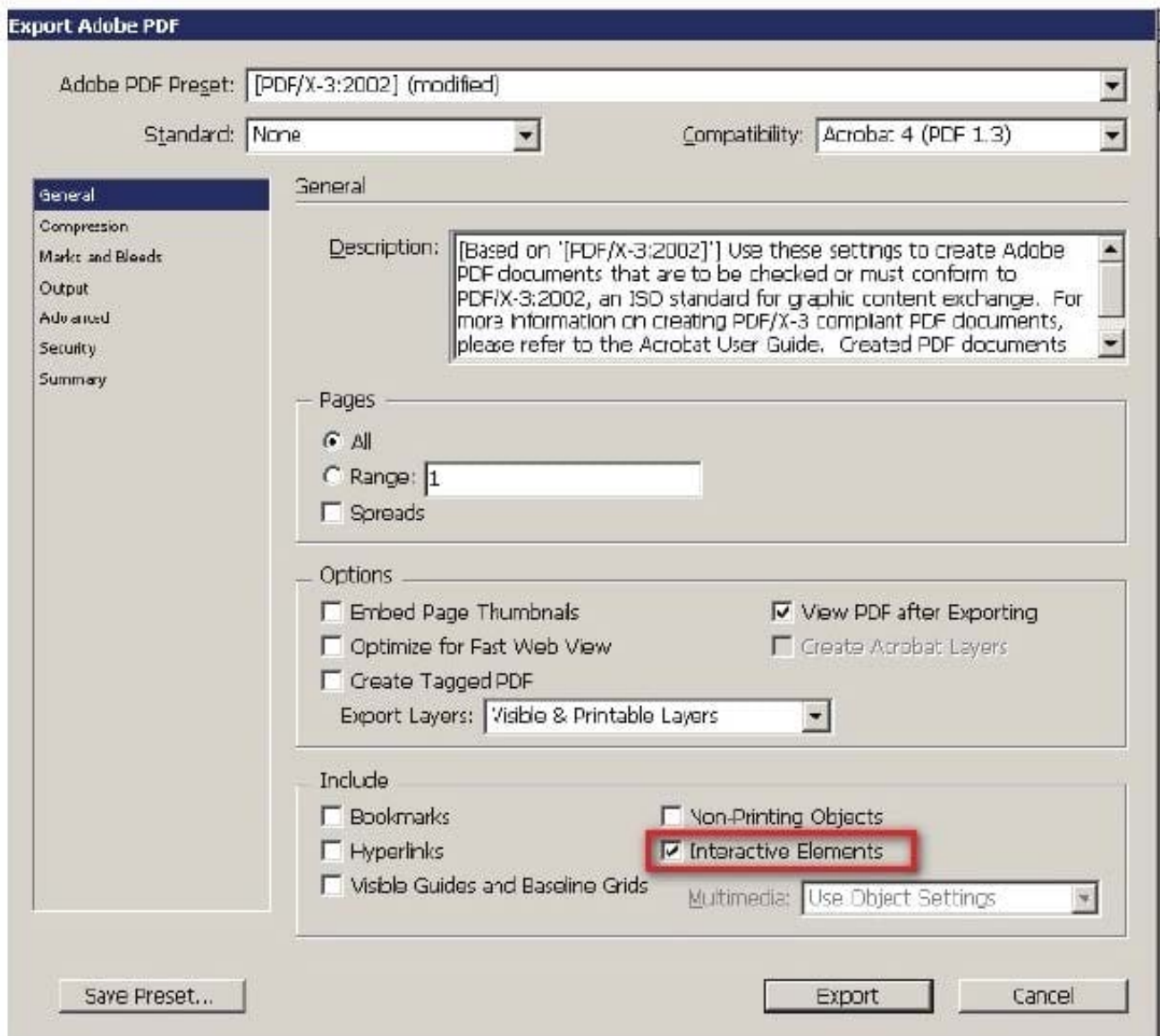
You are creating a newsletter in InDesign. You have applied page transitions on several pages of this document.

What will you do to include page transitions when you export the PDF document?

- A. Select the Bookmarks option in the Export PDF dialog box.
- B. Select the Non-Printing Objects option in the Export PDF dialog box.
- C. Select the Interactive Elements option in the Export PDF dialog box.
- D. Select the Embed Page Thumbnails option in the Export PDF dialog box.

Correct Answer: C

To include page transitions when you export the PDF document, you have to select the Interactive Elements option in the Export PDF dialog box. The following diagram shows the Interactive Elements option in the Export PDF dialog box.



Answer: D is incorrect. Select this option to create a thumbnail preview for each page being exported. Adding thumbnails increases the PDF file size.

Answer: A is incorrect. Select this option to create bookmarks for table of contents entries, preserving the TOC levels. Bookmarks are created from the information specified in the Bookmarks panel.

Answer: B is incorrect. Select this option to export objects to which you have applied the Non- Printing option in the Attributes panel.

QUESTION 3

Which of the following panes in the Print dialog box is used to control the processing of colors and inks on imagesetters, platesetters, and commercial printing equipments?

- A. Advanced pane
- B. Output pane



- C. Graphics pane
- D. Color Management pane

Correct Answer: B

The Output pane is used to control the processing of colors and inks on imagesetters, platesetters, and commercial printing equipments.

Answer: C is incorrect. The Graphics pane is used to control how graphics are printed and how fonts are downloaded.

Answer: A is incorrect. The Advanced pane is used to control printing of files as bitmaps, manage graphics file substitutions in an Open Prepress Interface (OPI) workflow, and set transparency flattening, which manages how transparent and

semi-transparent objects are handled during output.

Answer: D is incorrect. The Color Management pane is used to manage color output.

QUESTION 4

You are creating a document in InDesign CS5. You want to apply tags on your document.

Which of the following commands can be used to import tags? Each correct answer represents a complete solution. Choose all that apply.

- A. Choose Object > Tags
- B. Choose File > Import XML
- C. Choose Window > Tags
- D. Choose File > import

Correct Answer: BC

There are two places where you can import tags.

1.The Tags panel (choose Window > Tags)

2.The Import XML dialog box (choose File > Import XML). Answer: A and D are incorrect. These are invalid answer options.

QUESTION 5

By default, where can you find the Tools panel in a Adobe Indesign workspace?

- A. Lower right corner of the work area
- B. Upper right corner of the work area
- C. Upper left corner of the work area



D. Middle of the work area

Correct Answer: C

The Tools panel is docked to the upper left corner of the work area by default. You can also undock the Tools panel. To undock the Tools panel, you can either drag the title bar or the gray dotted bar just below the title bar.

[Latest 9A0-142 Dumps](#)

[9A0-142 Practice Test](#)

[9A0-142 Exam Questions](#)