



# 9A0-142<sup>Q&As</sup>

Adobe InDesign CS5 ACE Exam

**Pass Adobe 9A0-142 Exam with 100% Guarantee**

Free Download Real Questions & Answers **PDF** and **VCE** file from:

<https://www.geekcert.com/9a0-142.html>

100% Passing Guarantee  
100% Money Back Assurance

Following Questions and Answers are all new published by Adobe  
Official Exam Center

-  **Instant Download** After Purchase
-  **100% Money Back** Guarantee
-  **365 Days** Free Update
-  **800,000+** Satisfied Customers





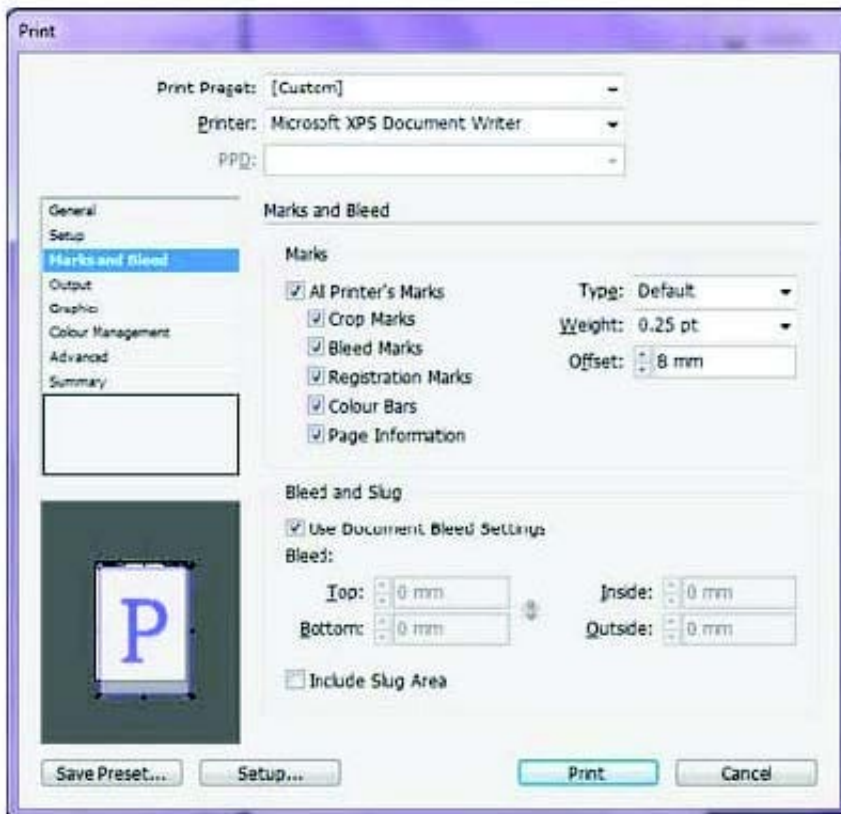
## QUESTION 1

What will you do if you want to place crop marks 8 mm from the trim edge when printing?

- A. Choose File > Document Setup > Click the More Options button, and enter 8 mm as the Slug value.
- B. Select the All Printer's Marks checkbox in the Marks and Bleed pane of the Print Dialog Box and set the Offset field to 8 mm.
- C. Uncheck Use Document Bleed Settings and enter values from 0 to 6 inches for Top, Bottom, Left, and Right for single-sided documents.
- D. Uncheck Use Document Bleed Settings and enter values from 0 to 6 inches for Top, Bottom, Inside, and Outside for double-sided documents with facing pages.

Correct Answer: B

If you want to place crop marks 8 mm from the trim edge while printing, you will Select the All Printer's Marks checkbox in the Marks and Bleed pane of the Print Dialog Box, and set the Offset field to 8 mm.



## QUESTION 2

Which of the following can you check by using the Separations Preview panel? Each correct answer represents a complete solution. Choose all that apply.



- A. Rich black
- B. Overprinting
- C. Ink coverage
- D. Varnishes and other coatings

Correct Answer: ABCD

You can check the following areas by using the Separations Preview panel: Varnishes and other coatings. Since varnishes are transparent, they can be difficult to preview on a screen. When a user previews a varnish separation by himself, the varnished areas appear in black. Rich black. Previewing separation allows a user to identify areas that will print as rich black, or process black (K) ink mixed with color inks for increased opacity and richer colors. Ink coverage Too much of ink on the paper can cause drying problems. Overprinting. Previewing this will allow a user to see how blending, transparency, and overprinting will appear in a color-separated output.

---

### QUESTION 3

You are preparing a document for printing in InDesign CS5. Which of the following options in the Mark and Bleed pane of the Print dialog box specifies how far from the edge of the page will InDesign draw printer's marks?

- A. Weight
- B. Crop Marks
- C. Bleed Marks
- D. Offset

Correct Answer: D

The Offset option adds fine (hairline) rules that define the amount of additional area to the image outside the defined page size.

Answer: B is incorrect. The Crop Marks option adds fine (hairline) horizontal and vertical rules that define where the page should be trimmed. Crop marks also help in registering (align) one color separation to another.

---

### QUESTION 4

You have created a table in a document. You select the cell by pressing the Esc key to paste some data in a cell of the table. The data you are pasting has tabs and carriage returns in it.

What will happen when you paste this data to the selected cell?

- A. Data will not be pasted in the cell.
- B. InDesign maps the clipboard data into the cell.
- C. InDesign maps the clipboard data across more than one cell.
- D. InDesign maps the clipboard data across the all cells in the table.



Correct Answer: C

If you select the cell (this means if you press Esc to toggle between selecting what is inside the cell and the cell itself), and if the data you are pasting has tabs or carriage returns, InDesign maps the clipboard data across more than one cell. It will not paste the data in one cell in which you want to paste the data in the above scenario. To insert the data in the cell, you should insert the cursor inside the cell instead of selecting cell itself.

## QUESTION 5

Which of the following are included in the graphics file formats InDesign imports? Each correct answer represents a complete solution. Choose all that apply.

- A. EPS
- B. GIF
- C. SAP
- D. BMP

Correct Answer: ABD

Following are included in the graphics file formats InDesign imports:

- 1.BMP. It is the native Windows bitmap format.
- 2.EPS. EPS or Encapsulated PostScript file format is favored by professional publishers. One of its color-separated variant is DCS or Desktop Color Separation.
- 3.GIF. GIF or Graphics Interchange Format is common in Web documents.
- 4.Illustrator. It is similar to EPS.
- 5.InDesign. Other InDesign documents can be imported, as if they are graphics. Specific pages can also be chosen to be imported.
- 6.JPEG. JPEG or Joint Photographic Expert Group compresses bitmap format used on the Web.
- 7.PCX. PCX or PC Paintbrush was very popular in earlier versions of Windows and DOS programs. It has been supplanted by other formats.
- 8.PDF. PDF or Portable Document Format is a variant of PostScript and is used for Web-based, network-based, and CD-based documents.
- 9.Photoshop. Photoshop is the native format in Adobe Photoshop 5.0 through CS5.
- 10.PICT. PICT or Picture is used in professional documents.
- 11.PNG. PNG or Portable Network Graphics is more capable than GIF.
- 12.Scitex CT. It is the continuous-tone bitmap format used on Scitex prepress systems.
- 13.TIFF. TIFF or Tagged Image File Format is the bitmap standard for image editors and publishers.
- 14.Windows Metafile. Windows Metafile is used in professional documents.



VCE & PDF

GeekCert.com

<https://www.geekcert.com/9a0-142.html>

2024 Latest geekcert 9A0-142 PDF and VCE dumps Download

---

[Latest 9A0-142 Dumps](#)

[9A0-142 PDF Dumps](#)

[9A0-142 Practice Test](#)