



# A00-270<sup>Q&As</sup>

SAS BI Content Development

## Pass SASInstitute A00-270 Exam with 100% Guarantee

Free Download Real Questions & Answers **PDF** and **VCE** file from:

<https://www.geekcert.com/a00-270.html>

100% Passing Guarantee  
100% Money Back Assurance

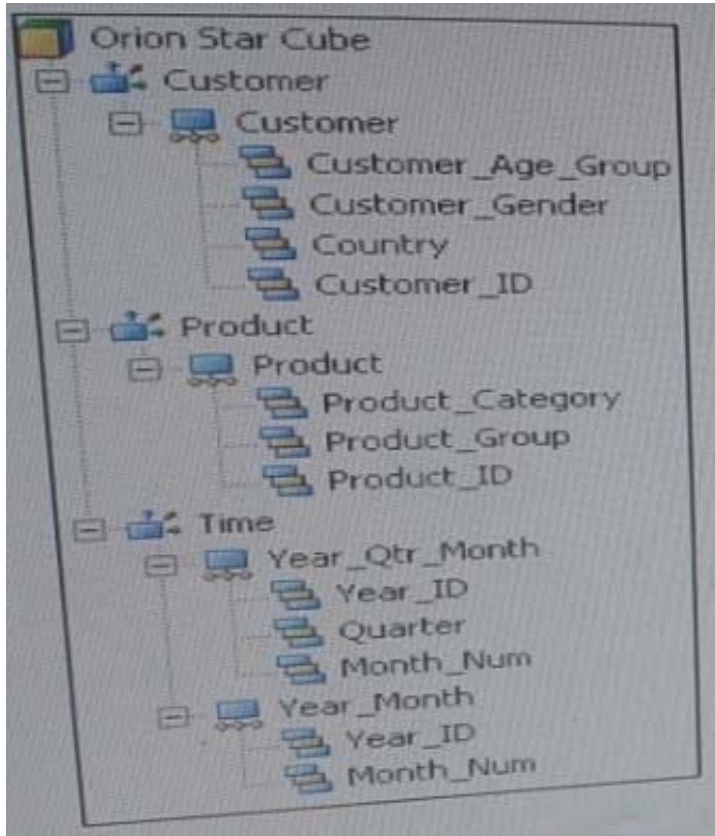
Following Questions and Answers are all new published by SASInstitute  
Official Exam Center

- ⚙️ **Instant Download** After Purchase
- ⚙️ **100% Money Back** Guarantee
- ⚙️ **365 Days** Free Update
- ⚙️ **800,000+** Satisfied Customers



**QUESTION 1**

A cube designer is creating a cube and has established the following dimension structure:



The cube designer would like to add the customer name and have it associated with the customer ID. Which action should the cube designer take?

- A. Add a level attribute to the Customer\_ID level
- B. Create a new hierarchy that contains Customer\_Name instead of Customer\_ID as a level
- C. Add a member property to the Customer\_ID level
- D. Add Customer\_NAME as a new level, placing it after Customer\_ID in the hierarchy

Correct Answer: D

---

**QUESTION 2**

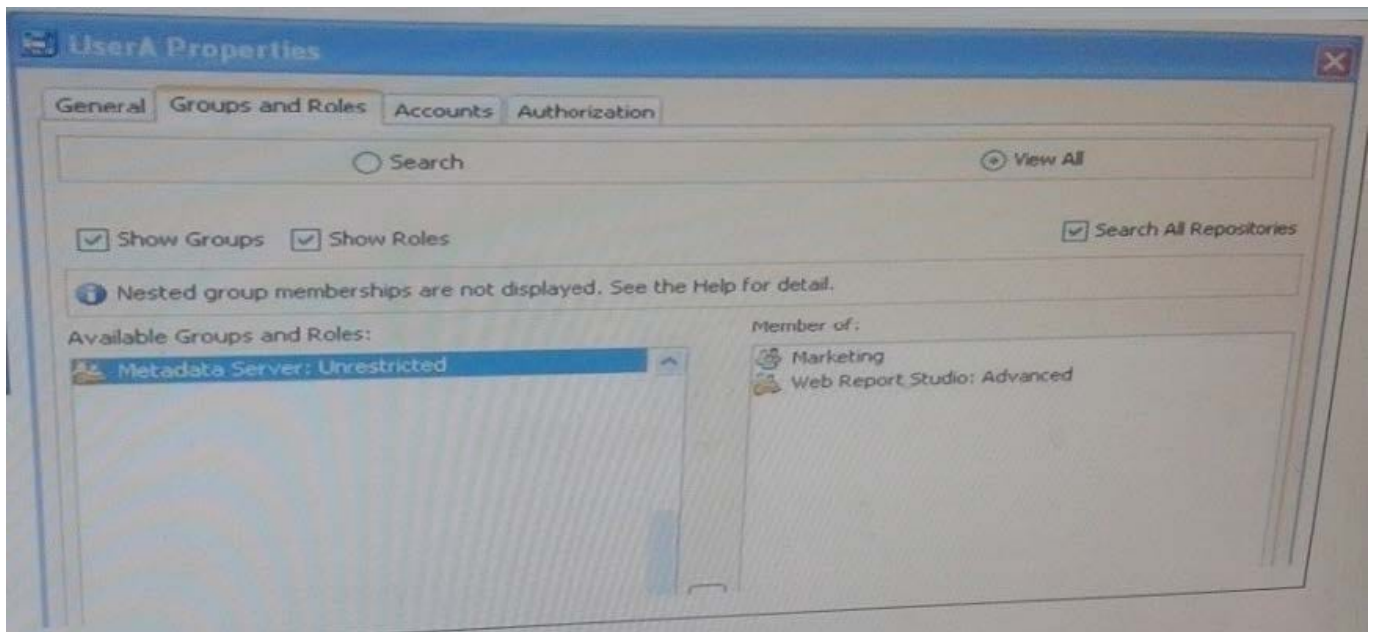
Refer to the exhibit.



	Name	Group
1	Alice	Marketing
2	Alice	Marketing
3	Alice	Sales
4	Bob	Sales
5	Bob	Web Report Studio: Advanced
6	Bob	Web Report Studio: Advanced

Filter combinations:

Group = (&SAS.IdentityGroups)



An identity filter based on SAS identityGroups is applied to the Mydata.Class table. How many rows will be returned when UserA uses the map to see a detail listing?

- A. 3
- B. 2
- C. 4
- D. 6



---

Correct Answer: A

---

### QUESTION 3

When you register a stored process in the metadata, you specify the type of output the stored process can produce. What is a valid value for the output options in the metadata?

- A. HTML
- B. PDF
- C. SAS report
- D. package

Correct Answer: D

---

### QUESTION 4

Which SAS code statement is defined by the Library metadata object?

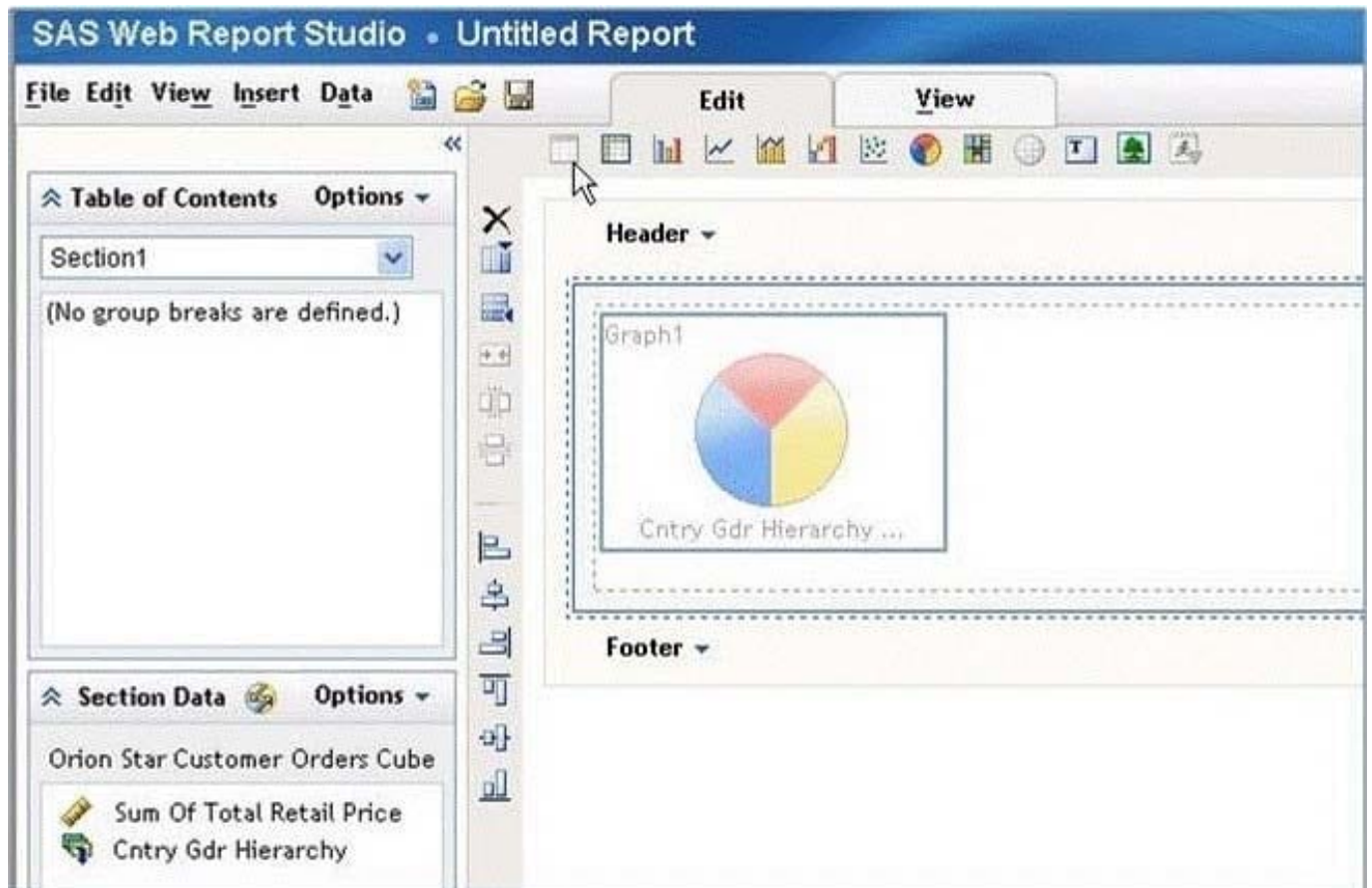
- A. The LIBNAME statement
- B. The FILENAME statement
- C. The PROC METALIB statement
- D. The OPTIONS statement

Correct Answer: A

---

### QUESTION 5

Refer to the exhibit.



Why is the list report icon (first icon in the object list) grayed out?

- A. The list report object is only available in the Report Wizard.
- B. The list report object cannot be used in the same section as OLAP data.
- C. Not enough hierarchies are selected.
- D. Not enough measures are selected.

Correct Answer: B

[Latest A00-270 Dumps](#)

[A00-270 Study Guide](#)

[A00-270 Braindumps](#)