



C2010-570^{Q&As}

IBM Maximo Asset Management V7.5 Implementation

Pass IBM C2010-570 Exam with 100% Guarantee

Free Download Real Questions & Answers **PDF** and **VCE** file from:

<https://www.geekcert.com/c2010-570.html>

100% Passing Guarantee
100% Money Back Assurance

Following Questions and Answers are all new published by IBM Official Exam Center

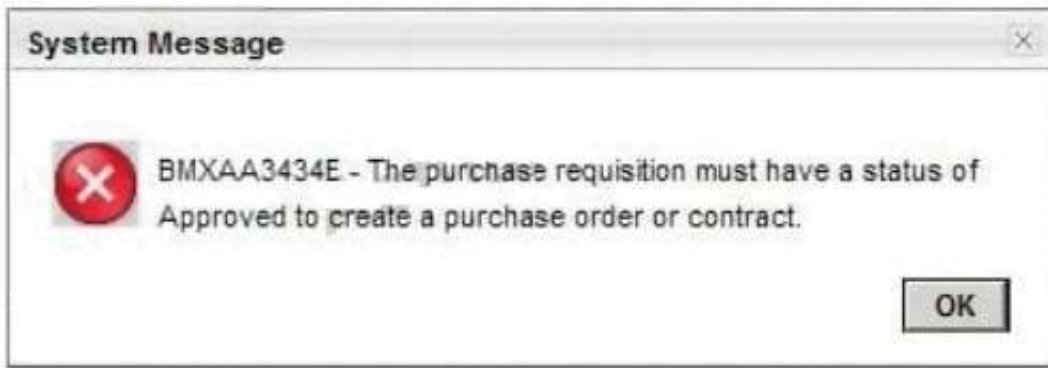
-  **Instant Download** After Purchase
-  **100% Money Back** Guarantee
-  **365 Days** Free Update
-  **800,000+** Satisfied Customers





QUESTION 1

A company has deployed IBM Maximo Asset Management V7.5 (Maximo) to manage the company assets and the purchasing process. The company's purchasing process does not require an approved purchase request (PR) in order to generate a new purchase order (PO) but the buyer reported this problem when trying to create a new PO from an unapproved PR:



Where can this validation be turned off in Maximo?

- A. Organizations application
- B. Purchase Orders application
- C. System Properties application
- D. Database Configuration application

Correct Answer: A

QUESTION 2

Which statement is true about routes?

- A. Assets and locations that are applied to a route must be from the same site as the site ID of the route record.
- B. Assets and locations that are applied to a route must be from the same site as the site ID of the parent record.
- C. After a route has been applied to a work order, the resulting taskwork or child work orders can no longer be modified.
- D. After a route has been applied to a work order, new sequence numbers can be assigned to the resulting taskwork or child work orders.

Correct Answer: D

QUESTION 3

In the Receiving application, what are three standard values for the Inspection Status field? (Choose three.)



- A. APPR
- B. COMP
- C. WINSF
- D. CLOSE
- E. WAPPR
- F. WASSET

Correct Answer: BCF

QUESTION 4

What is used to add an item to a storeroom using the Item Master application?

- A. the Add New Row button on the Vendors tab
- B. the Add New Row button on the Storerooms tab
- C. the Add Items To Storeroom in the Select Action menu
- D. the Add Items To Storeroom in the Item Assembly Structure tab

Correct Answer: C

QUESTION 5

Which statement is true regarding the relationship between escalations and actions?

- A. Action type must be accessible from ALL.
- B. Actions in a group must be associated to a sequence.
- C. Actions must be associated to an escalation through action groups.
- D. At least one action and notification must be associated to an escalation point.

Correct Answer: C

[Latest C2010-570 Dumps](#)

[C2010-570 PDF Dumps](#)

[C2010-570 Braindumps](#)