



C2020-012^{Q&As}

IBM SPSS Modeler Data Analysis for Business Partners v2

Pass IBM C2020-012 Exam with 100% Guarantee

Free Download Real Questions & Answers **PDF** and **VCE** file from:

<https://www.geekcert.com/C2020-012.html>

100% Passing Guarantee
100% Money Back Assurance

Following Questions and Answers are all new published by IBM Official Exam Center

- ⚙ **Instant Download** After Purchase
- ⚙ **100% Money Back** Guarantee
- ⚙ **365 Days** Free Update
- ⚙ **800,000+** Satisfied Customers





QUESTION 1

System undefined values (\$null\$) are automatically defined as blank (missing) values in IBM SPSS Modeler.

- A. True
- B. False

Correct Answer: B

QUESTION 2

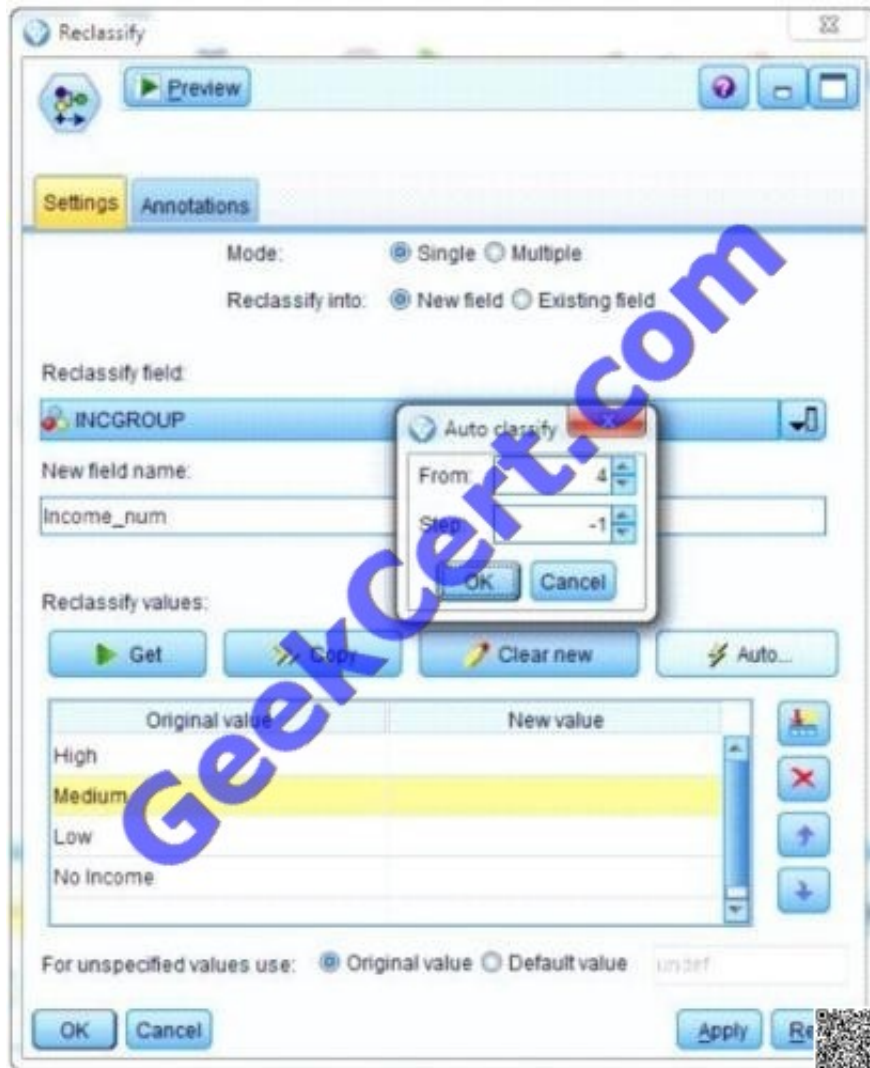
Auto checking for invalid values can be done on the Type tab in any Source node.

- A. True
- B. False

Correct Answer: A

QUESTION 3

What new value will be assigned to the original value Low given the specifications in the Reclassify node below?



- A. -1
- B. 2
- C. 3
- D. 4

Correct Answer: B

QUESTION 4

Examine the Data Audit output shown below.



Data Audit of [14 fields]

Complete fields (%): 85.71% Complete records (%): 96.57%

Field	Measurement	Outliers	Extremes	Action	Impute M...	Method	% Complete	Valid
ACCOM	Nominal	--	--		Never	Fixed	100	
COUNTRY	Nominal	--	--		Never	Fixed	100	
CUSTID	Nominal	--	--		Never	Fixed	100	
DIST_TO_BE	Continuous	1	0 None		Never	Fixed	100	
DOB	Nominal	--	--		Never	Fixed	100	
GENDER	Nominal	--	--		Never	Fixed	98.681	
HOLCODE	Nominal	--	--		Never	Fixed	100	
HOLCOST	Continuous	9	1 Discard		Never	Fixed	97.889	
NAME	Nominal	--	--		Never	Fixed	100	
NIGHTS	Continuous	0	0 Nullify		Never	Fixed	100	
NUMPARTY	Continuous	6	0 None		Never	Fixed	100	
POOL	Flag	--	--		Never	Fixed	100	
REGION	Nominal	--	--		Never	Fixed	100	
TRAVDATE	Nominal	--	--		Never	Fixed	100	

What action will occur in a generated Outlier and Extreme Super node for HOLCOST?

- A. Nine records will be set to the system missing (null) value for HOLCOST.
- B. Ten records will be deleted.
- C. Ten records will be set to the system missing (null) value for HOLCOST.
- D. Nine records will be deleted

Correct Answer: B

QUESTION 5

A prison system has historical data on prison inmates and wants to find what factors are related to recidivism (return to prison). What type of model would be used?

- A. Segmentation model
- B. Classification model
- C. Association model
- D. Anomaly model

Correct Answer: B

[Latest C2020-012 Dumps](#)

[C2020-012 VCE Dumps](#)

[C2020-012 Study Guide](#)



To Read the [Whole Q&As](#), please purchase the [Complete Version](#) from [Our website](#).

Try our product !

100% Guaranteed Success
100% Money Back Guarantee
365 Days Free Update
Instant Download After Purchase
24x7 Customer Support
Average 99.9% Success Rate
More than 800,000 Satisfied Customers Worldwide
Multi-Platform capabilities - Windows, Mac, Android, iPhone, iPod, iPad, Kindle

We provide exam PDF and VCE of Cisco, Microsoft, IBM, CompTIA, Oracle and other IT Certifications.
You can view Vendor list of All Certification Exams offered:

<https://www.geekcert.com/allproducts>

Need Help

Please provide as much detail as possible so we can best assist you.
To update a previously submitted ticket:



 One Year Free Update Free update is available within One Year after your purchase. After One Year, you will get 50% discounts for updating. And we are proud to boast a 24/7 efficient Customer Support system via Email.	 Money Back Guarantee To ensure that you are spending on quality products, we provide 100% money back guarantee for 30 days from the date of purchase.	 Security & Privacy We respect customer privacy. We use McAfee's security service to provide you with utmost security for your personal information & peace of mind.
---	---	--

Any charges made through this site will appear as Global Simulators Limited.
All trademarks are the property of their respective owners.
Copyright © geekcert, All Rights Reserved.