



C2020-625^{Q&As}

IBM Cognos 10 BI Data Warehouse Developer

Pass IBM C2020-625 Exam with 100% Guarantee

Free Download Real Questions & Answers **PDF** and **VCE** file from:

<https://www.geekcert.com/C2020-625.html>

100% Passing Guarantee
100% Money Back Assurance

Following Questions and Answers are all new published by IBM Official Exam Center

-  **Instant Download** After Purchase
-  **100% Money Back** Guarantee
-  **365 Days** Free Update
-  **800,000+** Satisfied Customers





QUESTION 1

Over time, an employee may move from one office to another. The dimension table tracks these types of changes. What is this dimension an example of?

- A. Slowly changing dimension
- B. Metadata dimension
- C. Reference dimension
- D. Slowly derived dimension

Correct Answer: A

QUESTION 2

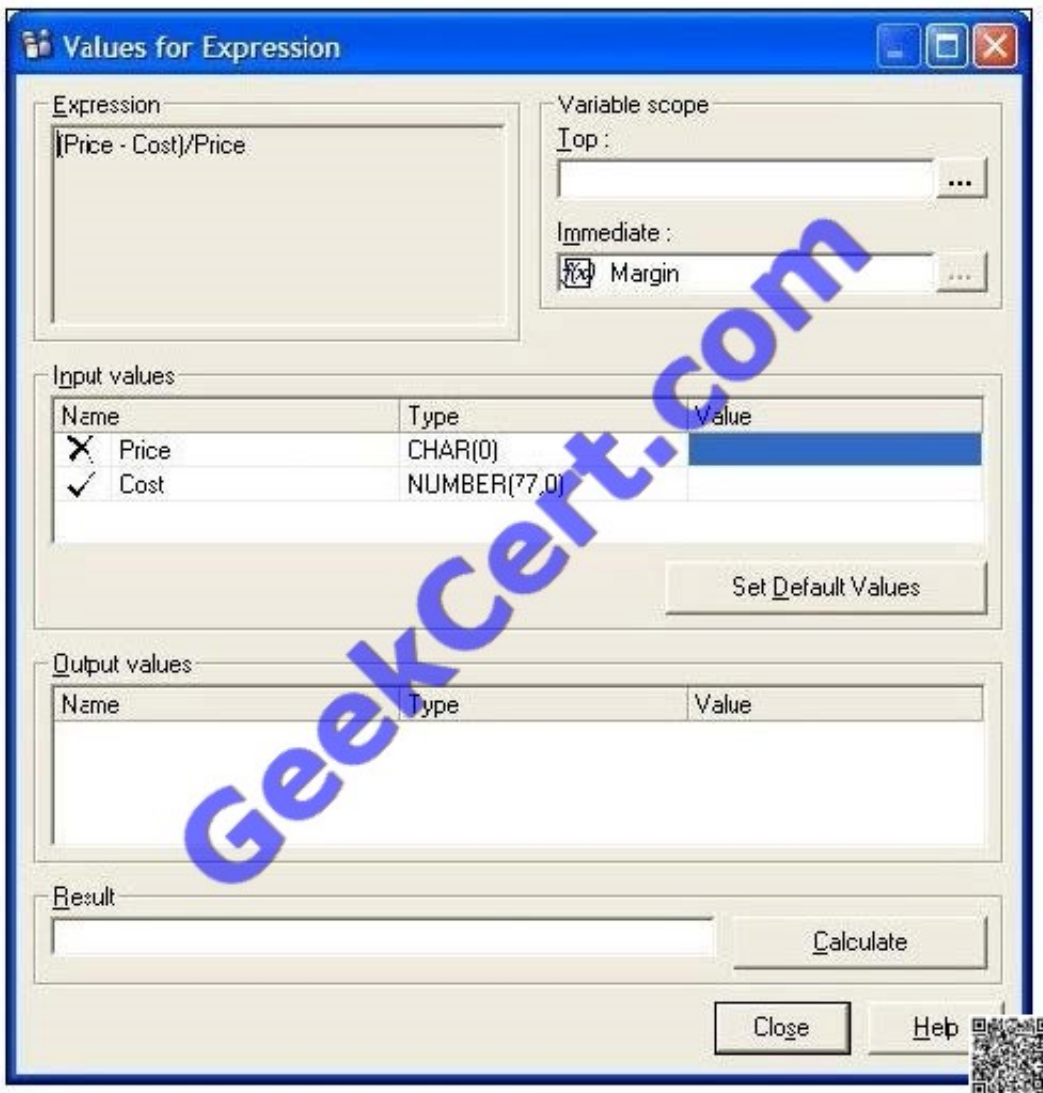
Which of the following tasks can be completed with the Dimension Build wizard?

- A. Adding a custom schema to use for the dimension tables.
- B. Specifying the folder in which the dimension build will be stored.
- C. Specifying surrogates and change tracking behaviors.
- D. Creating a connection to hold the dimension tables.

Correct Answer: C

QUESTION 3

A developer is attempting to test a derivation.



In the Input values section, what does the cross symbol beside Price indicate?

- A. No value has yet been defined for Price in the Output values section.
- B. The option in the Top box should be set to Price.
- C. The option in the Immediate box should be set to Price.
- D. A definition for Price has not been found.

Correct Answer: D

QUESTION 4

Which of the following is true of the Navigator?

- A. When searching for components, wildcards are not supported.
- B. When a component is selected, dependent components are shown.



- C. Library components (such as hierarchies) cannot be navigated.
- D. Components from different catalogs can be compared.

Correct Answer: B

QUESTION 5

Which of the following is true of a dimension build?

- A. It uses literals to define the behavior of each column of a dimension table.
- B. It can generate PowerCubes, Framework Manager models, and Cognos 8 reports.
- C. It can deliver data to a single, "private" data mart.
- D. It uses a template to define the behavior of each column of a dimension table.

Correct Answer: D

[C2020-625 PDF Dumps](#)

[C2020-625 Study Guide](#)

[C2020-625 Exam Questions](#)



To Read the [Whole Q&As](#), please purchase the [Complete Version](#) from [Our website](#).

Try our product !

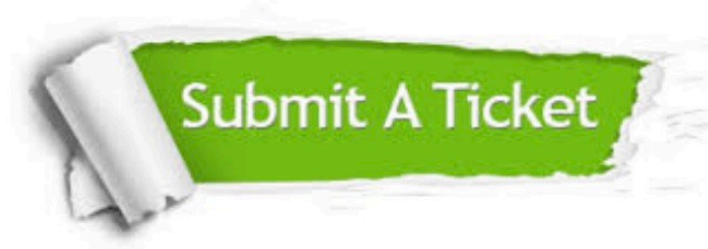
- 100% Guaranteed Success
- 100% Money Back Guarantee
- 365 Days Free Update
- Instant Download After Purchase
- 24x7 Customer Support
- Average 99.9% Success Rate
- More than 800,000 Satisfied Customers Worldwide
- Multi-Platform capabilities - [Windows](#), [Mac](#), [Android](#), [iPhone](#), [iPod](#), [iPad](#), [Kindle](#)

We provide exam PDF and VCE of Cisco, Microsoft, IBM, CompTIA, Oracle and other IT Certifications. You can view Vendor list of All Certification Exams offered:

<https://www.geekcert.com/allproducts>

Need Help

Please provide as much detail as possible so we can best assist you.
To update a previously submitted ticket:



 <p>One Year Free Update Free update is available within One Year after your purchase. After One Year, you will get 50% discounts for updating. And we are proud to boast a 24/7 efficient Customer Support system via Email.</p>	 <p>Money Back Guarantee To ensure that you are spending on quality products, we provide 100% money back guarantee for 30 days from the date of purchase.</p>	 <p>Security & Privacy We respect customer privacy. We use McAfee's security service to provide you with utmost security for your personal information & peace of mind.</p>
---	---	--

Any charges made through this site will appear as Global Simulators Limited.
All trademarks are the property of their respective owners.
Copyright © geekcert, All Rights Reserved.