



C2060-220^{Q&As}

IBM Sterling Connect Direct Administration

Pass IBM C2060-220 Exam with 100% Guarantee

Free Download Real Questions & Answers **PDF** and **VCE** file from:

<https://www.geekcert.com/C2060-220.html>

100% Passing Guarantee
100% Money Back Assurance

Following Questions and Answers are all new published by IBM Official Exam Center

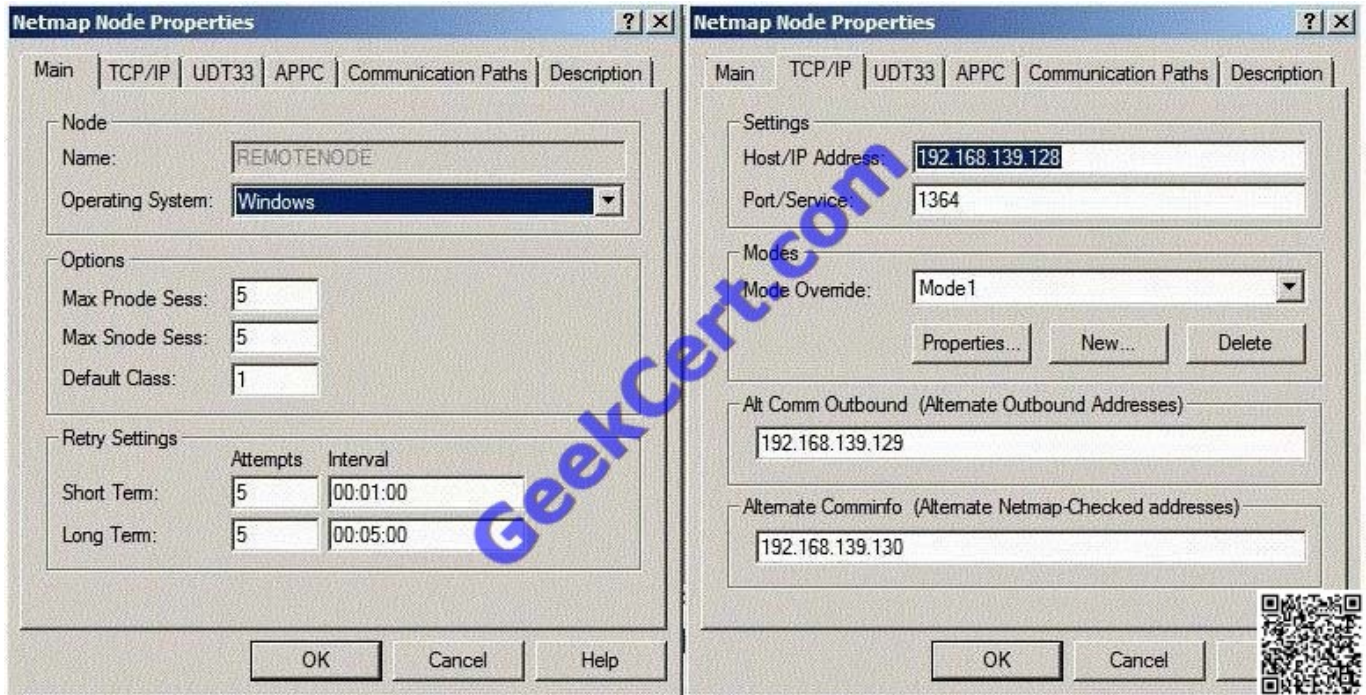
-  **Instant Download** After Purchase
-  **100% Money Back** Guarantee
-  **365 Days** Free Update
-  **800,000+** Satisfied Customers





QUESTION 1

A Sterling Connect:Direct for Windows administrator included a new remote node definition into netmap according to the exhibit below:



When the administrator submitted a process to this remote node, the first attempt to establish the session with address 192.168.139.128 failed due a network connection failure. What is the expected behavior for this process?

- A. It will retry using the maximum of 10 attempts to establish the session with address 192.168.139.129.
- B. It will try once with address 192.168.139.129. If the session is not established with 192.168.139.129 then it will retry using the maximum of 10 attempts to establish the session with address 192.168.139.128.
- C. It will retry using the maximum of 5 attempts to establish the session with address 192.168.139.128. If the session is not established then it will retry using the maximum of 5 attempts to establish the session with address 192.168.139.129.
- D. It will retry using the maximum of 10 attempts to establish the session with address 192.168.139.128. If the session is not established then it will retry using the maximum of 10 attempts to establish the session with address 192.168.139.129.

Correct Answer: BC

QUESTION 2

What is the character used in SYSOPTS to separate options for a Connect:Direct UNIX node?

- A. |



B. /

C. ,

D. :

Correct Answer: D

QUESTION 3

A Sterling Connect:Direct for Windows user1 has submitted process number 4711. User1 asks user2 for assistance with determining process completion. User2 issues a Select Statistics command, which returns information on some other processes, but nothing for process number 4711. What has happened here?

- A. The process has failed to submit.
- B. The process has not completed yet.
- C. User1 is configured with Statistics=N.
- D. User2 is configured with Statistics=Y.

Correct Answer: D

QUESTION 4

Which of the following is supported by Sterling Connect:Direct for z/OS V1 FMH flows?

- A. XDR Keywords
- B. Mapped DSECTS
- C. ZLIB Compression
- D. Cyclic redundancy check (CRC)

Correct Answer: B

QUESTION 5

A Sterling Connect:Direct for UNIX administrator is configuring the Connect:Direct Secure+ Option to securely transfer files. During the test, the connection failed and the administrator extracted the following information from the PNODE trace:



```
PID=17322 02/09 08:12:37:038473 SSI_Connect entered.
PID=17322 02/09 08:12:37:038493 CSSLSession::Connect entered
=17322 cdspssl: CipherSuites: DHE-RSA-AES256-SHA:AES256-SHA:DHE-RSA-AES128-SHA:AES128-SHA:RC4-SHA:RC4-MD
5:EDH-RSA-DES-CBC3-SHA:DES-CBC3-SHA:EDH-RSA-DES-CBC-SHA:DES-CBC-SHA:EXP-RC4-MD5:EXP-DES-CBC-SHA:EXP-RC2-CBC-MD5:NULL-
SHA:NULL-MD5
PID=17322 02/09 08:12:37:161357 CSSLSession::VerifyCallback entered, ok=1
=17322 cdspssl: depth=0
subject=/C=US/ST=State/L=City/O=node/OU=unix1/CN=unix1/emailAddress=unix@company
=17322 cdspssl: audit info
/C=US/ST=State/L=City/O=node/OU=unix11/CN=unix1/emailAddress=unix@company/SHA1=00f922189fd4da9263d4b371c45044c78e383
582/SN=05397FB1
=17322 cdspssl: Validating peer certificate common name
=17322 cdspssl: Expected Common Name: unix11
=17322 cdspssl: Received Common Name: unix1
=17322 cdspssl: Common name validation failed
PID=17322 02/09 08:12:37:161485 -> ndm_error_set
=17322 msgid: CSPA315E
=17322 feedback: 0
=17322 rc: 8
=17322 subst: :&VAR1=unix1:
=17322 status: 2
=17322 num_entries: 1
PID=17322 02/09 08:12:37:161687 -> sdcf_fileread
=17322 cfh: 0x08645CAs
=17322 buffer: 0xFFFF315E0
=17322 key: CSPA315E
=17322 <- sdcf_fileread: found CSPA315E
=17322 <- sdcf_read: record ok
PID=17322 02/09 08:12:37:161759 substitution entered.
=17322 ARG work : Certificate common name authentication failed, CN=&VAR1.
=17322 ARG msg_text:
```



The cause of this problem is that the Common Name (CN) in the Secure+ configuration does NOT match the:

- A. the hostname on PNODE.A.the hostname on PNODE.
- B. the hostname on SNODE.B.the hostname on SNODE.
- C. CN in the certificate from the PNODE.C.CN in the certificate from the PNODE.
- D. CN in the certificate from the SNODE.D.CN in the certificate from the SNODE.

Correct Answer: D

[C2060-220 PDF Dumps](#)

[C2060-220 Exam Questions](#)

[C2060-220 Braindumps](#)



To Read the [Whole Q&As](#), please purchase the [Complete Version](#) from [Our website](#).

Try our product !

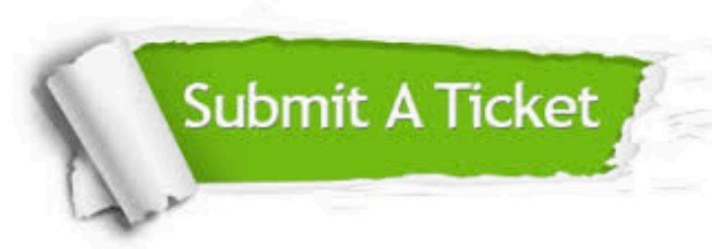
- 100% Guaranteed Success
- 100% Money Back Guarantee
- 365 Days Free Update
- Instant Download After Purchase
- 24x7 Customer Support
- Average 99.9% Success Rate
- More than 800,000 Satisfied Customers Worldwide
- Multi-Platform capabilities - [Windows](#), [Mac](#), [Android](#), [iPhone](#), [iPod](#), [iPad](#), [Kindle](#)

We provide exam PDF and VCE of Cisco, Microsoft, IBM, CompTIA, Oracle and other IT Certifications. You can view Vendor list of All Certification Exams offered:

<https://www.geekcert.com/allproducts>

Need Help

Please provide as much detail as possible so we can best assist you.
To update a previously submitted ticket:



 <p>One Year Free Update Free update is available within One Year after your purchase. After One Year, you will get 50% discounts for updating. And we are proud to boast a 24/7 efficient Customer Support system via Email.</p>	 <p>Money Back Guarantee To ensure that you are spending on quality products, we provide 100% money back guarantee for 30 days from the date of purchase.</p>	 <p>Security & Privacy We respect customer privacy. We use McAfee's security service to provide you with utmost security for your personal information & peace of mind.</p>
---	---	--

Any charges made through this site will appear as Global Simulators Limited.
All trademarks are the property of their respective owners.
Copyright © geekcert, All Rights Reserved.