



E20-385^{Q&As}

Data Domain Specialist Exam for Implementation Engineers

Pass EMC E20-385 Exam with 100% Guarantee

Free Download Real Questions & Answers **PDF** and **VCE** file from:

<https://www.geekcert.com/e20-385.html>

100% Passing Guarantee
100% Money Back Assurance

Following Questions and Answers are all new published by EMC
Official Exam Center

-  **Instant Download** After Purchase
-  **100% Money Back** Guarantee
-  **365 Days** Free Update
-  **800,000+** Satisfied Customers





QUESTION 1

What is a valid use for link aggregation on an EMC Data Domain system?

- A. Utilize multiple network links for enhanced throughput
- B. Share network traffic between 1 Gb and 10 Gb links
- C. Overcome CPU limitations of backup servers
- D. Automatically restart failed backups if a network link is lost

Correct Answer: A

QUESTION 2

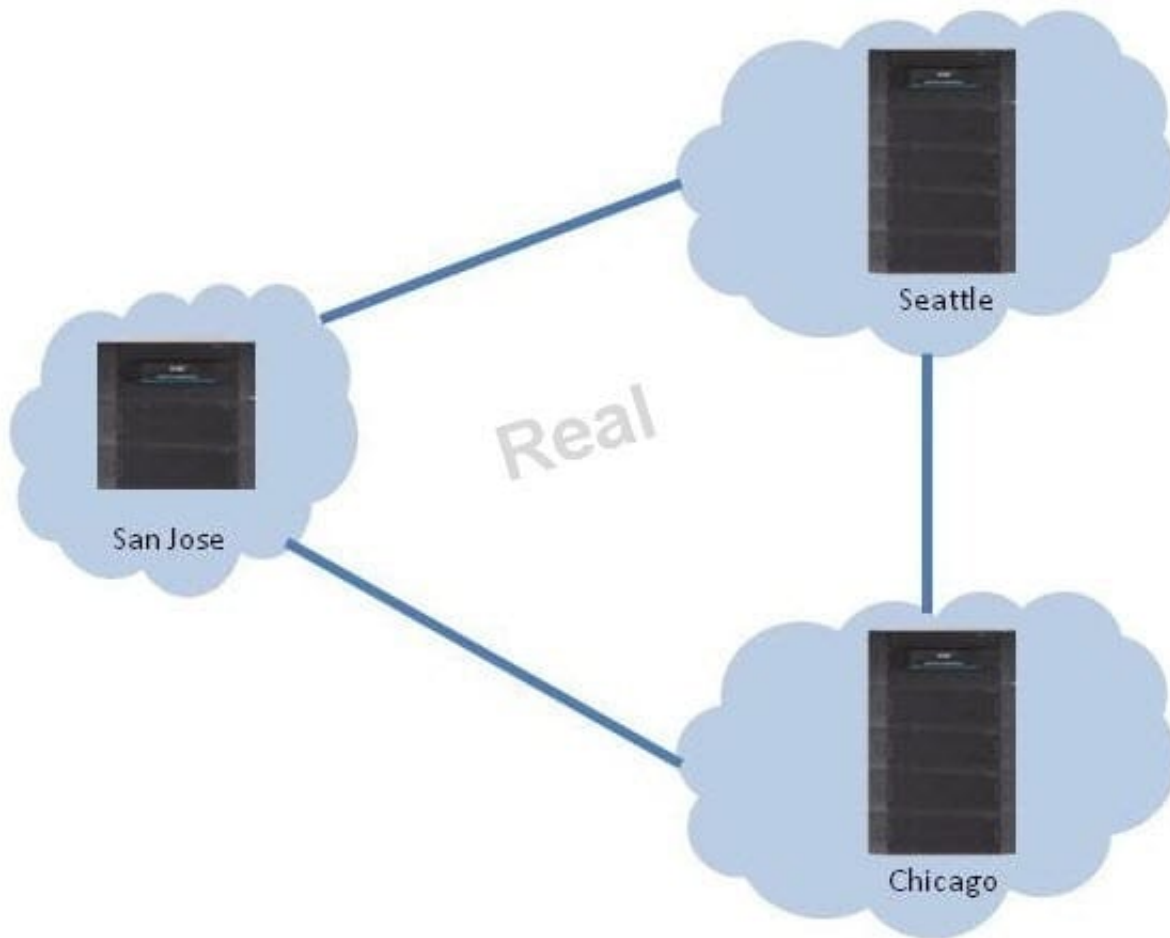
What is indicated by a flashing green LED on an EMC Data Domain Expansion Shelf SAS Controller?

- A. Connection in process
- B. Disk in use
- C. Connection established
- D. Connection problem

Correct Answer: A

QUESTION 3

Refer to Exhibit.



An EMC Data Domain customer has three offices with their payroll backups currently located in San Jose, California. They want to plan a disaster recovery strategy. The customer is concerned with the possibility of multiple disasters that could compromise both the source and destination sites simultaneously.

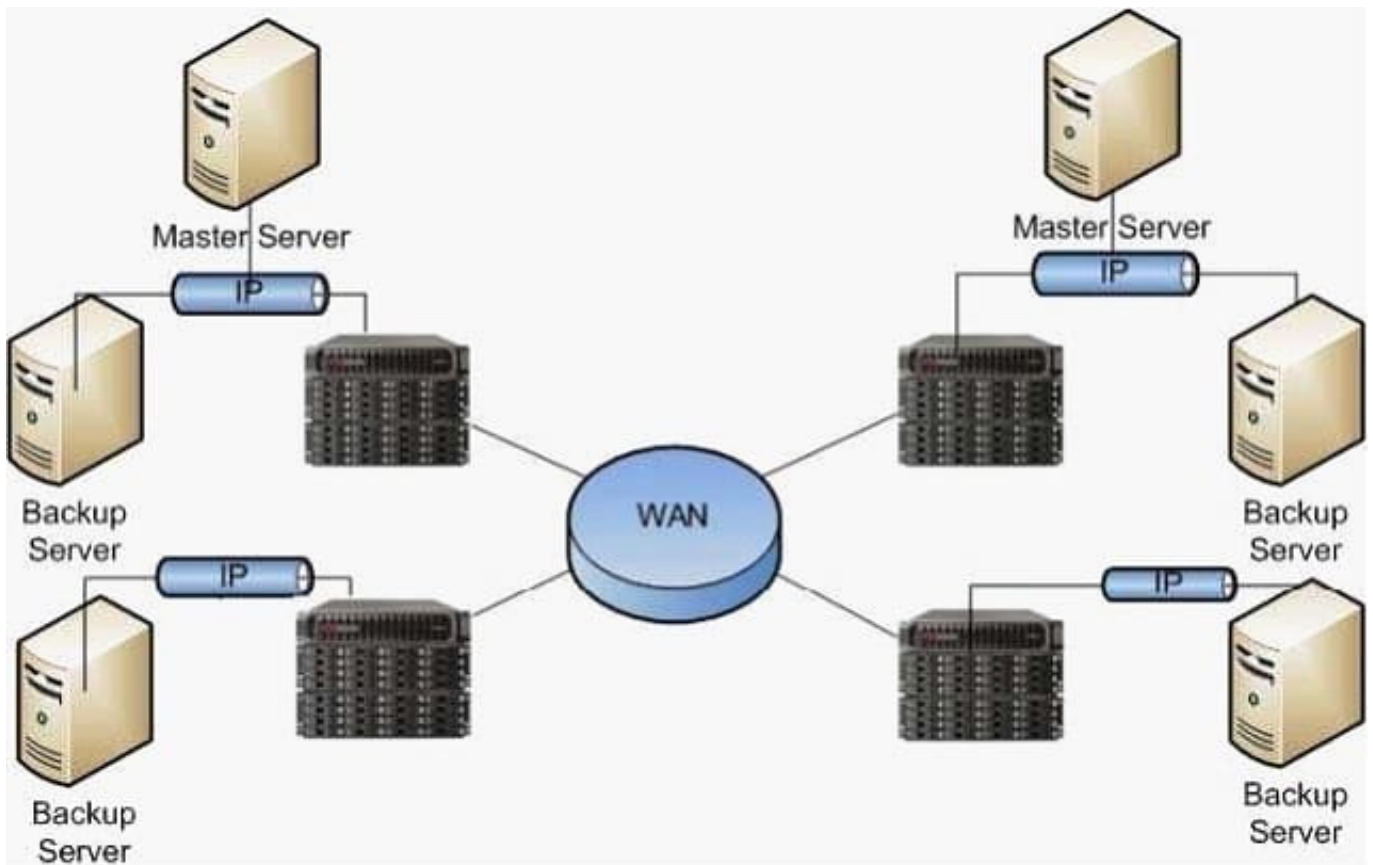
Which replication topology will address the customer's concerns about availability and RTO?

- A. Topology: One-to-many Source: San Jose Destination: Seattle and Chicago
- B. Topology: One-to-one Source: San Jose Destination: Seattle
- C. Topology: Bidirectional Source: San Jose Destination: Chicago
- D. Topology: Many-to-one Source: San Jose and Seattle Destination: Chicago

Correct Answer: A

QUESTION 4

An EMC Data Domain customer wants to replicate data between the four sites illustrated in the exhibit.



The customer has the option to use DD Boost or NFS with their backup software.

What is a key advantage of using DD Boost for backups in this environment instead of NFS?

- A. Catalog awareness of the replicas
- B. Ability to use virtual tape pools to manage replication
- C. Increases deduplication ratios
- D. Reduces the amount of data to replicate

Correct Answer: A

QUESTION 5

A customer has a Data Domain system with one expansion shelf using RAID 6 disk protection. An active data disk has failed while another data disk is going through the reconstruction process. All remaining disks are active with no more spare disks.

How many additional disk(s) can fail before data becomes unrecoverable?

- A. 0
- B. 1



C. 2

D. 3

Correct Answer: B

[E20-385 PDF Dumps](#)

[E20-385 Exam Questions](#)

[E20-385 Braindumps](#)