



E20-390^{Q&As}

VNX Solutions Specialist Exam for Implementation Engineers

Pass EMC E20-390 Exam with 100% Guarantee

Free Download Real Questions & Answers **PDF** and **VCE** file from:

<https://www.geekcert.com/e20-390.html>

100% Passing Guarantee
100% Money Back Assurance

Following Questions and Answers are all new published by EMC
Official Exam Center

- ⚙️ **Instant Download** After Purchase
- ⚙️ **100% Money Back** Guarantee
- ⚙️ **365 Days** Free Update
- ⚙️ **800,000+** Satisfied Customers





QUESTION 1

How many replication pairs are supported by VNX Replicator?

- A. 2
- B. 4
- C. 5
- D. 8

Correct Answer: B

QUESTION 2

How many local user accounts can be created per VNX CIFS Server?

- A. 128
- B. 256
- C. 1024
- D. 2048

Correct Answer: A

QUESTION 3

The user authentication and system management operations to the VNX with the Unisphere GUI or CLI are performed over the network using which industry standard protocols?

- A. Secure Socket Layer (SSL), Transport Layer Security (TLS) and Secure Shell (SSH).
- B. Password Authentication Protocol (PAP), Transport Layer Security (TLS) and Secure Shell (SSH).
- C. Secure Socket Layer (SSL), Transport Layer Security (TLS) and NT LAN Manager (NTLM).
- D. Secure Socket Layer (SSL), Generic Security Services (GSS) and Secure Shell (SSH).

Correct Answer: A



QUESTION 4

A company needs to have one of its file systems configured to auto extend at 80% HWM as part of a thin provisioning requirement. What must be taken into consideration when implementing this solution?

- A. Sufficient storage must be available since space is not reserved
- B. Maximum auto extend size will be reserved automatically
- C. Only 80% of the current file system size will be reserved
- D. Auto extend can only be configured at file system creation

Correct Answer: A

QUESTION 5

Where are CIFS audit policies configured?

- A. Unisphere, under Settings > Target Share > Properties > Advanced
- B. VNX Data Mover management MMC snap-in
- C. Unisphere, under Settings > Monitoring and Alerts
- D. Command line, through the server_security command

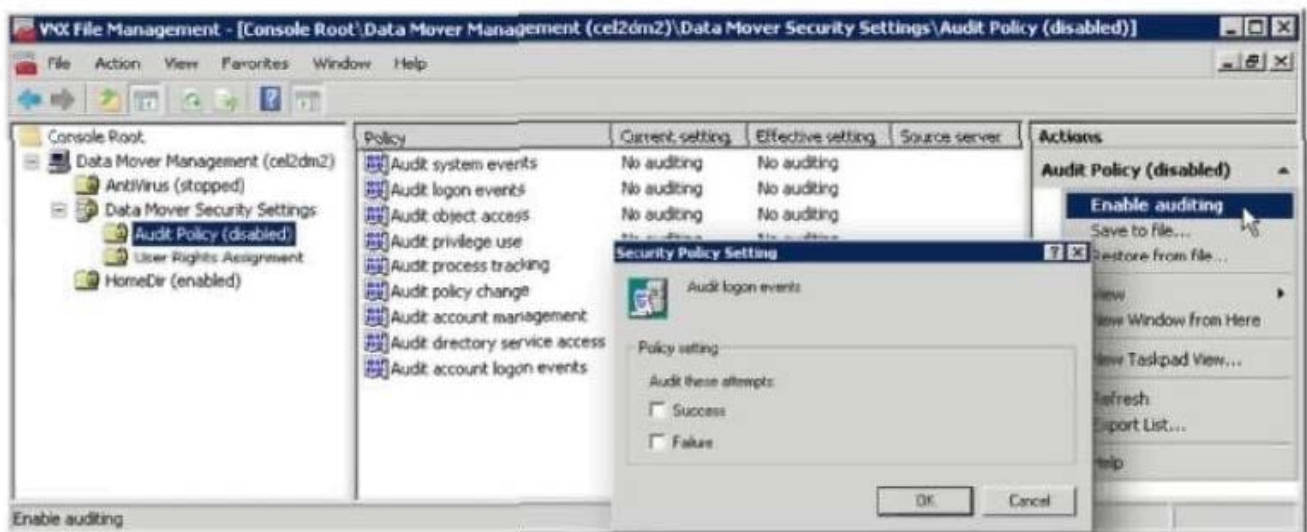
Correct Answer: B

Explanation:



Enable and Define Audit Policy per CIFS Server

- From Windows client, open MMC Management interface
 - ▶ MMC snap-in available from Application CD-ROM and Powerlink
 - ▶ The snap-in must be installed and added to the MMC prior to use
- Right-click Audit Policy, choose Enable.
- Set Success/Failure on desired policies.

[E20-390 Practice Test](#)[E20-390 Study Guide](#)[E20-390 Exam Questions](#)