



E20-495^{Q&As}

Content Management xCelerated Composition Platform Application
Development Exam

Pass EMC E20-495 Exam with 100% Guarantee

Free Download Real Questions & Answers **PDF** and **VCE** file from:

<https://www.geekcert.com/e20-495.html>

100% Passing Guarantee
100% Money Back Assurance

Following Questions and Answers are all new published by EMC
Official Exam Center

-  **Instant Download** After Purchase
-  **100% Money Back** Guarantee
-  **365 Days** Free Update
-  **800,000+** Satisfied Customers





QUESTION 1

A task in a work queue has been viewed by a user in the `advance_queue_processor` role and the user has closed the browser without closing the task properly. As a consequence, other users are prevented from acquiring the task. Which attribute of the `dmi_workitem` object needs to be cleared to release the lock?

- A. `a_held_by`
- B. `r_performer_name`
- C. `r_ext_performer`
- D. `r_runtime_state`

Correct Answer: A

QUESTION 2

An application developer configures a TaskSpace component in Forms Builder.

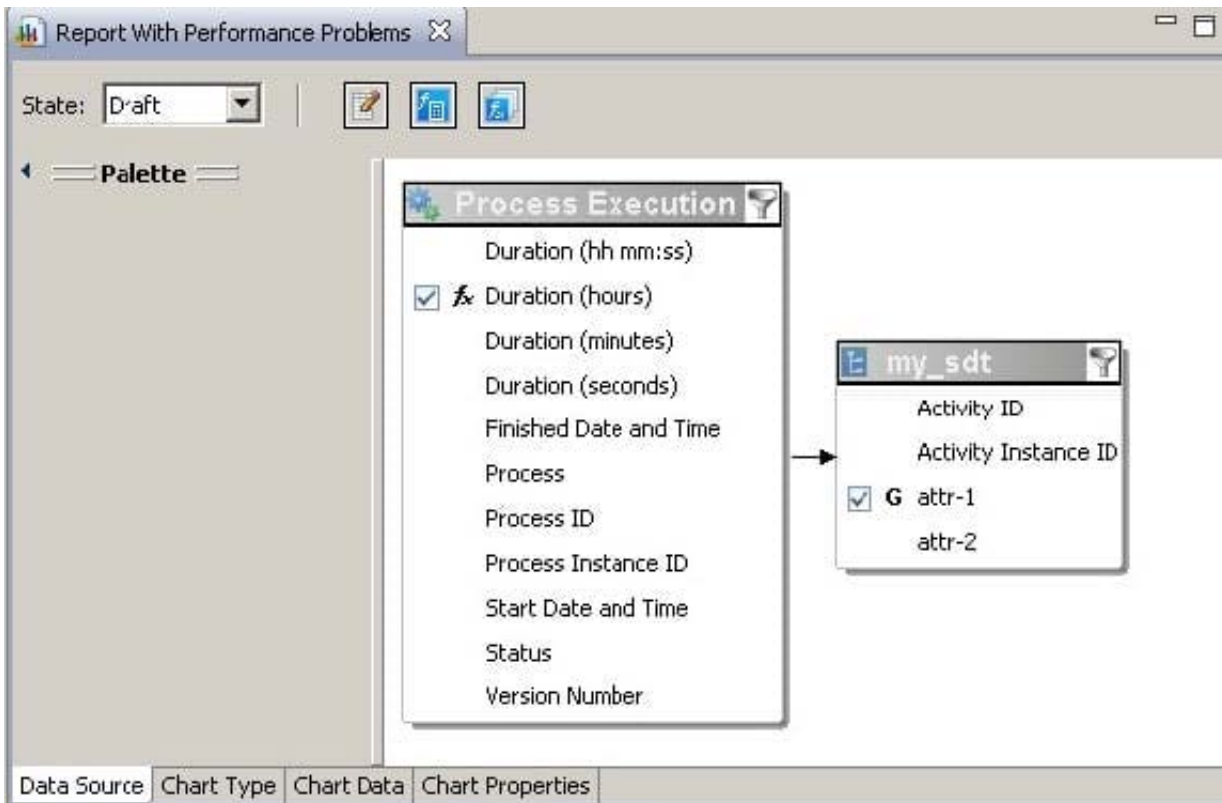
What can be referenced in the conditional expressions to hide/show fields?

- A. business calendar
- B. parent application
- C. TaskSpace tab
- D. TaskSpace role

Correct Answer: D

QUESTION 3

Refer to the exhibit.



The report definition shown in the exhibit is for a bar chart that displays the average Duration of Process Execution for a specific process, aggregated by attr1 of my_sdt.

The report has not been tuned for performance. What can an application developer do to improve performance of this report?

- A. Remove the filter from the Process Execution entity and re-publish the report.
- B. Remove the filter from the my_sdt entity and re-publish the report.
- C. Create an index on the Duration column of the table that represents the Process Execution entity in the BAM database.
- D. Create an index on the attr1 column of the table that represents the my_sdt entity in the BAM database.

Correct Answer: D

QUESTION 4

A manual activity is designed with performer setting as All users in a group. Which statement represents the server behavior?

- A. A work item is generated for each user in the group and an inbox item is also generated for each user in the group.
- B. A work item is generated for each user in the group but no inbox item is generated.
- C. A work item is generated for each user in the group, but only one inbox item is generated for the entire group.
- D. One work item is generated for the entire group and an inbox item is generated for each user in the group.



Correct Answer: A

QUESTION 5

In an environment where the Content Server, BAM application server, and BAM database server clocks cannot be synchronized to within 30 seconds, which BAM server adjustment can compensate for the disparity?

- A. decrease Data Transfer Latency
- B. increase Step Size
- C. increase Data Transfer Latency
- D. decrease Step Size

Correct Answer: C

[Latest E20-495 Dumps](#)

[E20-495 VCE Dumps](#)

[E20-495 Study Guide](#)