



E20-598^{Q&As}

Backup and Recovery - Avamar Specialist Exam for Storage Administrators

Pass EMC E20-598 Exam with 100% Guarantee

Free Download Real Questions & Answers **PDF** and **VCE** file from:

<https://www.geekcert.com/e20-598.html>

100% Passing Guarantee
100% Money Back Assurance

Following Questions and Answers are all new published by EMC
Official Exam Center

-  **Instant Download** After Purchase
-  **100% Money Back** Guarantee
-  **365 Days** Free Update
-  **800,000+** Satisfied Customers





QUESTION 1

Which EMC Avamar replication mode allows for many-to-one and bi-directional replication?

- A. Normal
- B. Failover
- C. Root-to-root
- D. Selective root-to-root

Correct Answer: A

QUESTION 2

Which EMC tool provides all the necessary steps, in the correct order, to implement an EMC Avamar server?

- A. Avamar Procedure Generator
- B. EMC Backup System Sizer
- C. TS-Kit Configuration Guide
- D. TS-Kit Test Plan

Correct Answer: A

QUESTION 3

Which Avamar Gen4 nodes can be used in multi-node configurations?

- A. 1.3 TB, 3.9 TB
- B. 2.6 TB, 3.9 TB
- C. 2.6 TB, 7.8 TB
- D. 3.9 TB, 7.8 TB

Correct Answer: D

QUESTION 4

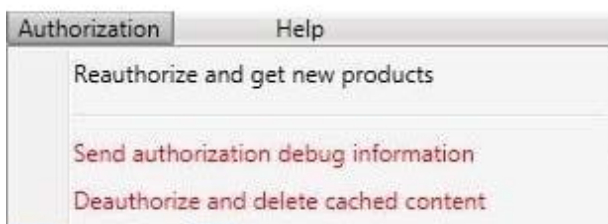
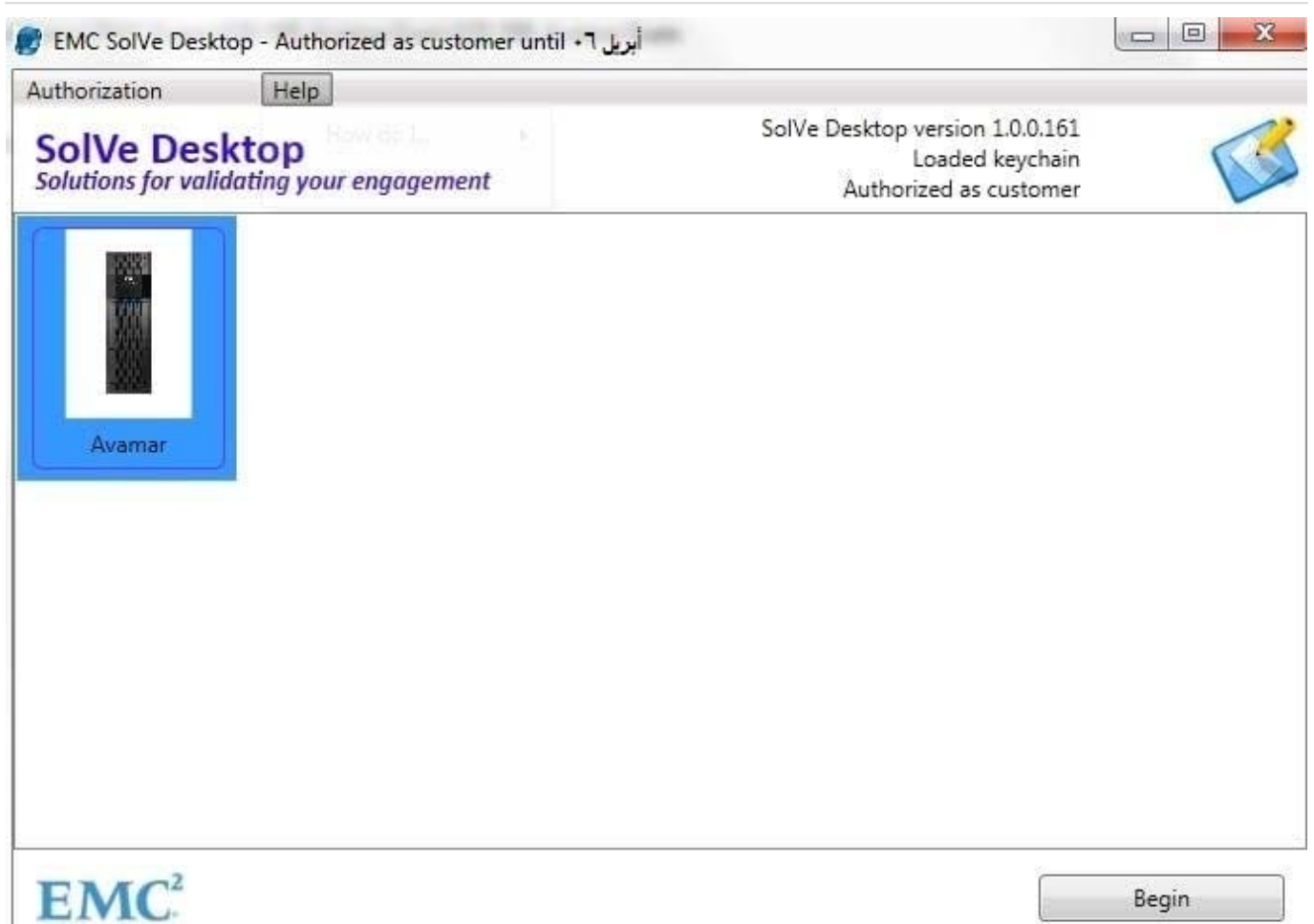
The EMC Avamar Procedure Generator expires on a periodic basis, requiring connecting to the EMC network for an update. How often does this happen?



- A. Every four days
- B. Every week
- C. Every two weeks
- D. Every four weeks

Correct Answer: C

Has been replaced by SolVe Desktop this March#





QUESTION 5

A company has 50 clients backing up to an EMC Avamar server. The storage administrator has decided to implement Desktop/Laptop (DTLT) support for several of the Microsoft Windows client machines. Where is this support deployed?

- A. Avamar client software installation
- B. Avamar Administrator Policy window
- C. Windows File System plug-in options
- D. Avamar Windows Client Options menu

Correct Answer: A

[Latest E20-598 Dumps](#)

[E20-598 VCE Dumps](#)

[E20-598 Practice Test](#)