



EX0-113^{Q&As}

TMap Next Foundation

Pass EXIN EX0-113 Exam with 100% Guarantee

Free Download Real Questions & Answers **PDF** and **VCE** file from:

<https://www.geekcert.com/ex0-113.html>

100% Passing Guarantee
100% Money Back Assurance

Following Questions and Answers are all new published by EXIN
Official Exam Center

-  **Instant Download** After Purchase
-  **100% Money Back** Guarantee
-  **365 Days** Free Update
-  **800,000+** Satisfied Customers





QUESTION 1

What is a major reason for evaluating the test basis during the preparation phase?

- A. Avoiding costly corrective work at a later stage of the project.
- B. Being able to design the test infrastructure at an earlier stage.
- C. Being able to build test data quickly.

Correct Answer: A

QUESTION 2

See the definition below:

Tests in which the supplying party demonstrates that the product particularly meets the functional and non-functional specifications and the technical design, among other things of which test level is this the definition?

- A. acceptance test
- B. development test
- C. system test

Correct Answer: C

QUESTION 3

See the decision and test situations below:

$R = (A \text{ AND } B) \text{ OR } C$

1.A=false	B=true	C=false
2.A=false	B=false	C=true
3.A=true	B=true	C=false

Which test situation is missing if the coverage type decision points modified condition/decision coverage is used?

- A.

A=true	B=true	C=true
--------	--------	--------
- B.

A=true	B=false	C=false
--------	---------	---------

A. Option A



B. Option B

Correct Answer: B

QUESTION 4

During which TMap phase is testing '\\dynamic implicit\\'?

A. Specification

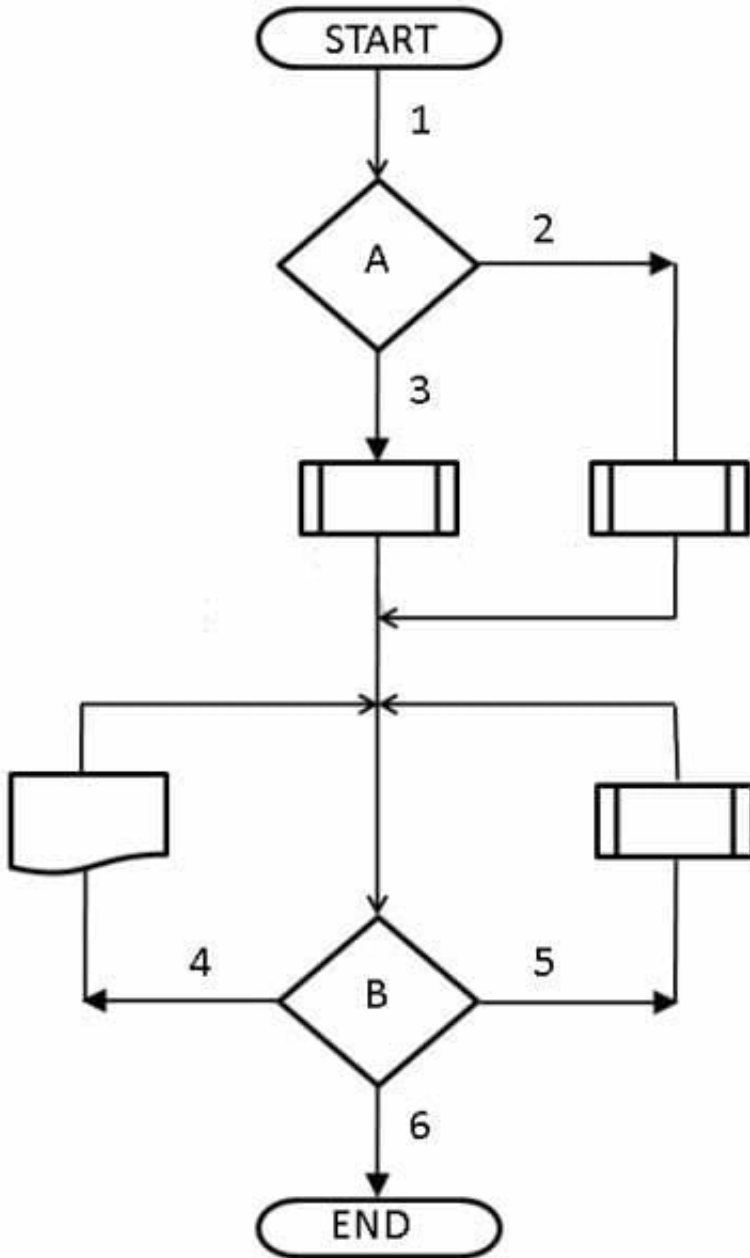
B. Execution

C. Preparation

Correct Answer: B

QUESTION 5

See the procedure flow below:



What is the minimum number of logical test cases are generated by the use of the Process Cycle Test if the coverage type paths test depth level 2 is used?

- B. 6
- C. 8
- D. 14

Correct Answer: B