



FM0-305^{Q&As}

Developer Essentials for FileMaker 11

Pass FileMaker FM0-305 Exam with 100% Guarantee

Free Download Real Questions & Answers **PDF** and **VCE** file from:

<https://www.geekcert.com/fm0-305.html>

100% Passing Guarantee
100% Money Back Assurance

Following Questions and Answers are all new published by FileMaker
Official Exam Center

-  **Instant Download** After Purchase
-  **100% Money Back** Guarantee
-  **365 Days** Free Update
-  **800,000+** Satisfied Customers





QUESTION 1

According to the FileMaker Server Configuration Guide, which two are considered best practices for backing up databases hosted by FileMaker Server? (Choose two.)

- A. use the Server Admin Console Schedule Assistant or fmsadmin tool to perform backups
- B. include the option to Verify backup integrity in backups performed during offpeak hours
- C. use enterpriseclass backup software to do a full system backup of the FileMaker Server at least once a week
- D. configure backup schedules to direct the backup of hosted databases directly to another computer or storage device
- E. use enterpriseclass backup software to do an incremental system backup of the FileMaker Server at least once a day

Correct Answer: AB

QUESTION 2

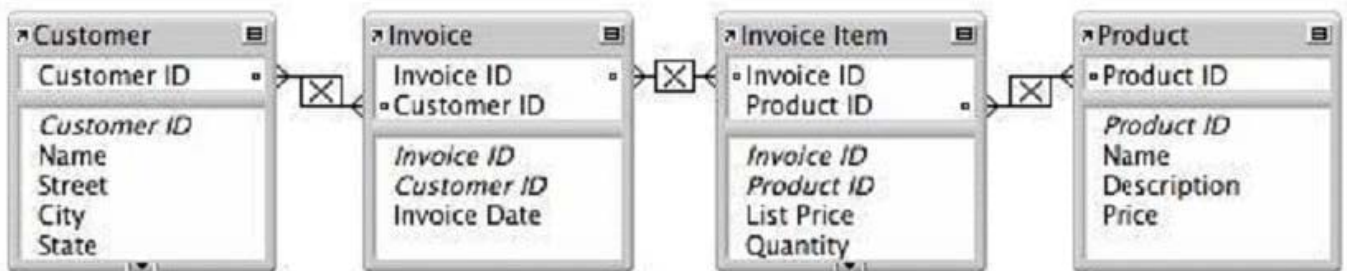
Which two statements are true in a FileMaker Pro 11 database containing scripts? (Choose two.)

- A. Multiple changes to multiple scripts can be saved using Save All Scripts.
- B. Saving changes to a currently running script will cause the execution of the script to halt.
- C. Running a script while other scripts have unsaved changes will cause all unsaved changes to be reverted.
- D. The Step Into button in the Script Debugger can be used to force the execution of a disabled script step.
- E. Closing the Manage Scripts window will prompt the user to save changes to the order or grouping of scripts.

Correct Answer: AB

QUESTION 3

Consider a FileMaker Pro 11 database with the following tables and fields: Assuming only the above relationships between table occurrences, using sorting if necessary, which two actions can be performed? (Choose two.)



- A. create a value list that shows all Invoices for a chosen Customer



- B. create a value list on a Product layout which displays all Customers
- C. find all of the Customers who have ever ordered a specific Product
- D. create a portal to display each Product that has been ordered by a Customer
- E. display all records from the Customer table in a portal on a layout for an Invoice Item record

Correct Answer: BE

QUESTION 4

There are two fields, Amount and Attainment. Each field is defined to have three repetitions and contain the following data:

Given the following formula in a nonrepeating calculation field:

Amount	Attainment
\$10.00	50%
\$25.00	100%
\$30.00	150%

Let([

\$x[1] = 1

\$x[2] = 2

\$x = Attainment]

(\$x[2] * Amount) * \$x[1]

)

What is the result?

- A. 5
- B. 10
- C. 12.5
- D. 20
- E. 25
- F. 50

Correct Answer: B



QUESTION 5

Which two statements are true about FileMaker Pro 11 relationships? (Choose two.)

- A. A relationship defined with an X (cross product) will only include records with nonmatching match field values.
- B. Valid relationships can include unindexed match fields.
- C. The % (contains) operator can be used for join criteria that include one unindexed match field.
- D. When editing match fields for a relationship, no more than 16 pairs of join criteria can be used.
- E. A relationship defined with an X (cross product) match will allow the Delete related records in this table when a record is deleted in the other table option.

Correct Answer: BE

[Latest FM0-305 Dumps](#)

[FM0-305 Exam Questions](#)

[FM0-305 Brindumps](#)