



FM0-305^{Q&As}

Developer Essentials for FileMaker 11

Pass FileMaker FM0-305 Exam with 100% Guarantee

Free Download Real Questions & Answers **PDF** and **VCE** file from:

<https://www.geekcert.com/fm0-305.html>

100% Passing Guarantee
100% Money Back Assurance

Following Questions and Answers are all new published by FileMaker
Official Exam Center

-  **Instant Download** After Purchase
-  **100% Money Back** Guarantee
-  **365 Days** Free Update
-  **800,000+** Satisfied Customers





QUESTION 1

A Text field called FirstLast in FileMaker Pro 11 is set to autoenterb the following formula:

FirstName and LastName.

FirstName and LastName are Text fields in the same table. The option Do not evaluate if all referenced fields are empty is unchecked. The option Do not replace existing value of field (if any) is checked. Under which two circumstances will the value of the calculation be inserted into the FirstLast field? (Chooseb two.)

- A. a record is first created
- B. a user selects the menu item Records > Relookup Field Contents
- C. each time the value of the FirstName or LastName field is modified
- D. any field value on the record is modified and the FirstLast field is empty
- E. the FirstName or LastName field is modified and the FirstLast field is empty

Correct Answer: AE

QUESTION 2

While in a FileMaker Pro 11 database on a layout based on the Invoice table occurrence, the following script is run:
Show All Records Go to Record/Request/Page [First] Loop If [Invoice::Status = "Sent"] Omit Record Else Go to Record/Request/Page [Next Exit after last] End If End Loop

Which two statements are true at the conclusion of the script? (Choose two.)

- A. All "Sent" invoices have been omitted from the found set.
- B. The loop will never end if every invoice has a status of "Sent."
- C. The last record will not be omitted if it has a status of "Sent."
- D. The found set will consist of all records if there are no "Sent" invoices.

Correct Answer: AD

QUESTION 3

According to the FileMaker Server Configuration Guide, which two are considered best practices for backing up databases hosted by FileMaker Server? (Choose two.)

- A. use the Server Admin Console Schedule Assistant or fmsadmin tool to perform backups
- B. include the option toVerify backup integrity in backups performed during offpeak hours
- C. use enterpriseclass backup software to do a full system backup of the FileMaker Server at least once a week

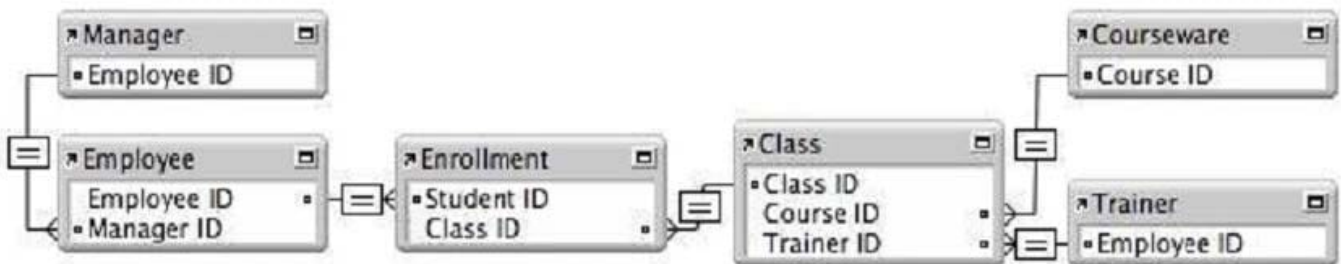


- D. configure backup schedules to direct the backup of hosted databases directly to another computer or storage device
- E. use enterpriseclass backup software to do an incremental system backup of the FileMaker Server at least once a day

Correct Answer: AB

QUESTION 4

Given the following Relationships Graph for a FileMaker 11 database, where Employee, Manager, and Trainer are all table occurrences sharing the same source table:



Assuming the relevant fields also exist in these tables, which two sets of data can be shown in portals without modifying the graph? (Choose two.)

- A. a portal of trainers that have taught their own manager
- B. a portal of students that have not enrolled in a class
- C. a portal showing a nonrepeating list of courseware titles taught by a trainer
- D. a portal of the classes that have been attended by a trainer's direct reports
- E. a portal of classes in which a manager enrolled with one or more of the manager's direct reports

Correct Answer: CD

QUESTION 5

Which two statements are true about the [Full Access] privilege set in a FileMaker Pro 11 database? (Choose two.)

- A. It is the only privilege set that can use Custom Functions.
- B. It is the only privilege set that can view the Relationships Graph.
- C. It is the only privilege set that can modify field options in Table View.
- D. It can be deleted only if another full access privilege set has been created.

Correct Answer: BC