



# GSLC<sup>Q&As</sup>

GIAC Security Leadership Certification (GSLC)

## Pass GIAC GSLC Exam with 100% Guarantee

Free Download Real Questions & Answers **PDF** and **VCE** file from:

<https://www.geekcert.com/gslc.html>

100% Passing Guarantee  
100% Money Back Assurance

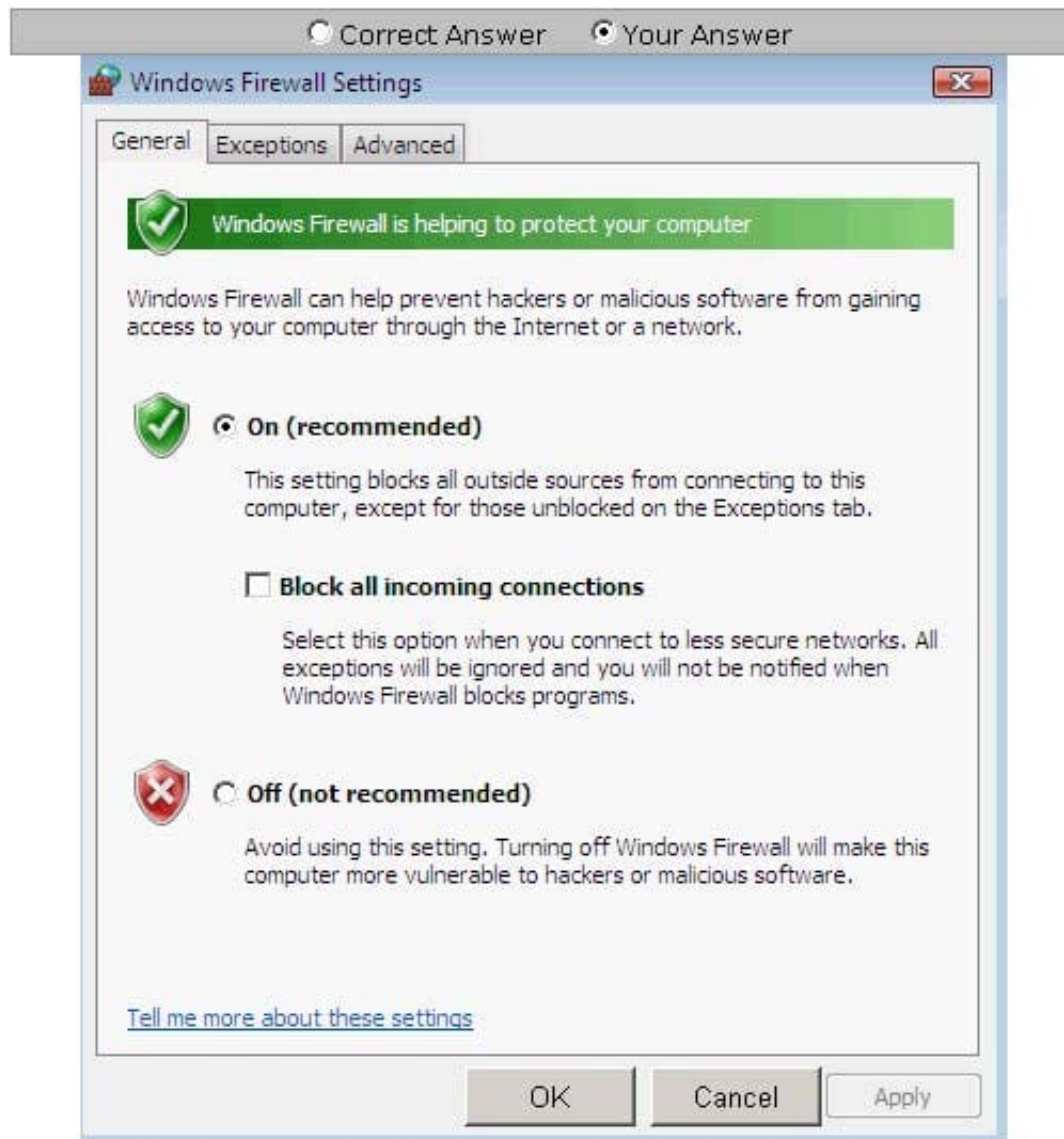
Following Questions and Answers are all new published by GIAC  
Official Exam Center

- ⚙️ **Instant Download** After Purchase
- ⚙️ **100% Money Back** Guarantee
- ⚙️ **365 Days** Free Update
- ⚙️ **800,000+** Satisfied Customers



**QUESTION 1**

Steve works as a Network Administrator for Blue Tech Inc. All client computers in the company run the Windows Vista operating system. He often travels long distances on official duty. While traveling, he connects to the office server through his laptop by using remote desktop connection. He wants to run an application that is available on the server of the company. When he connects to the server, he gets a message that the connection is blocked by the firewall. He returns to his

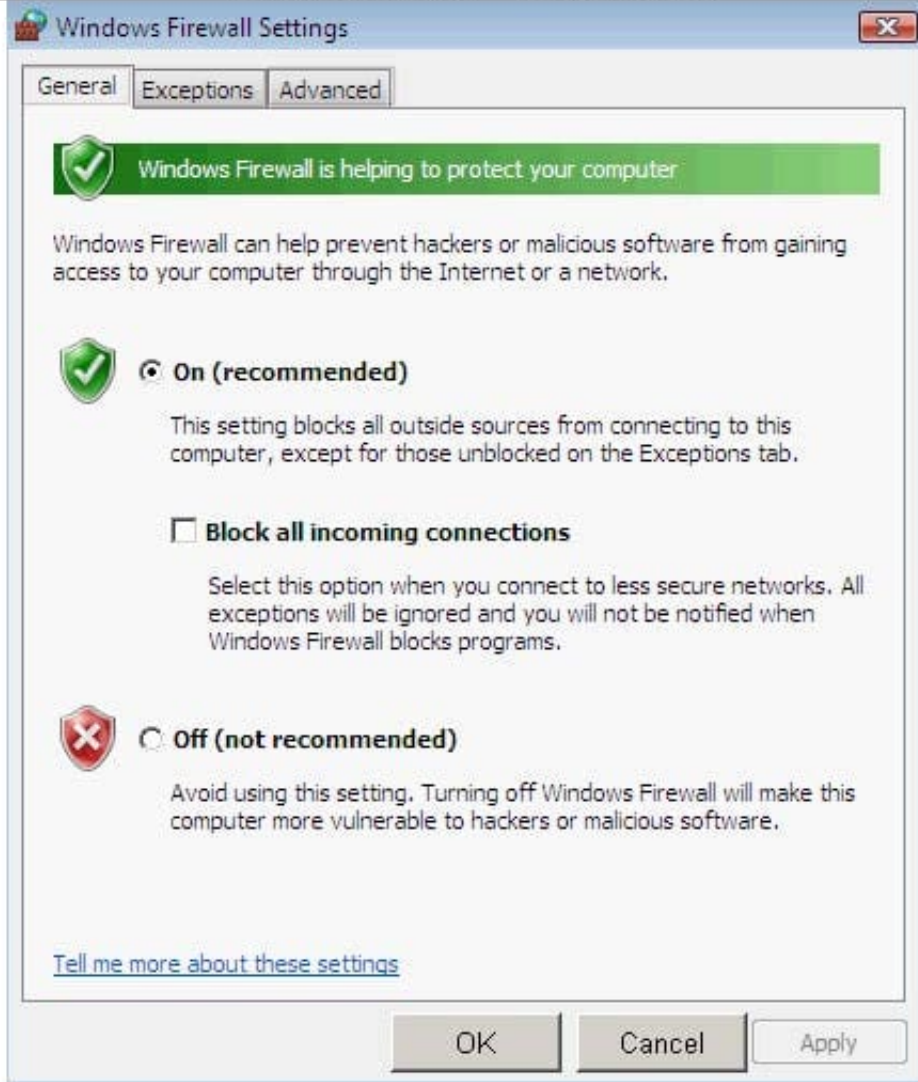


office to resolve the issue. He opens the Windows Firewall Settings dialog box. What actions should he perform in the dialog box given below to accomplish the task?

Hot Area:



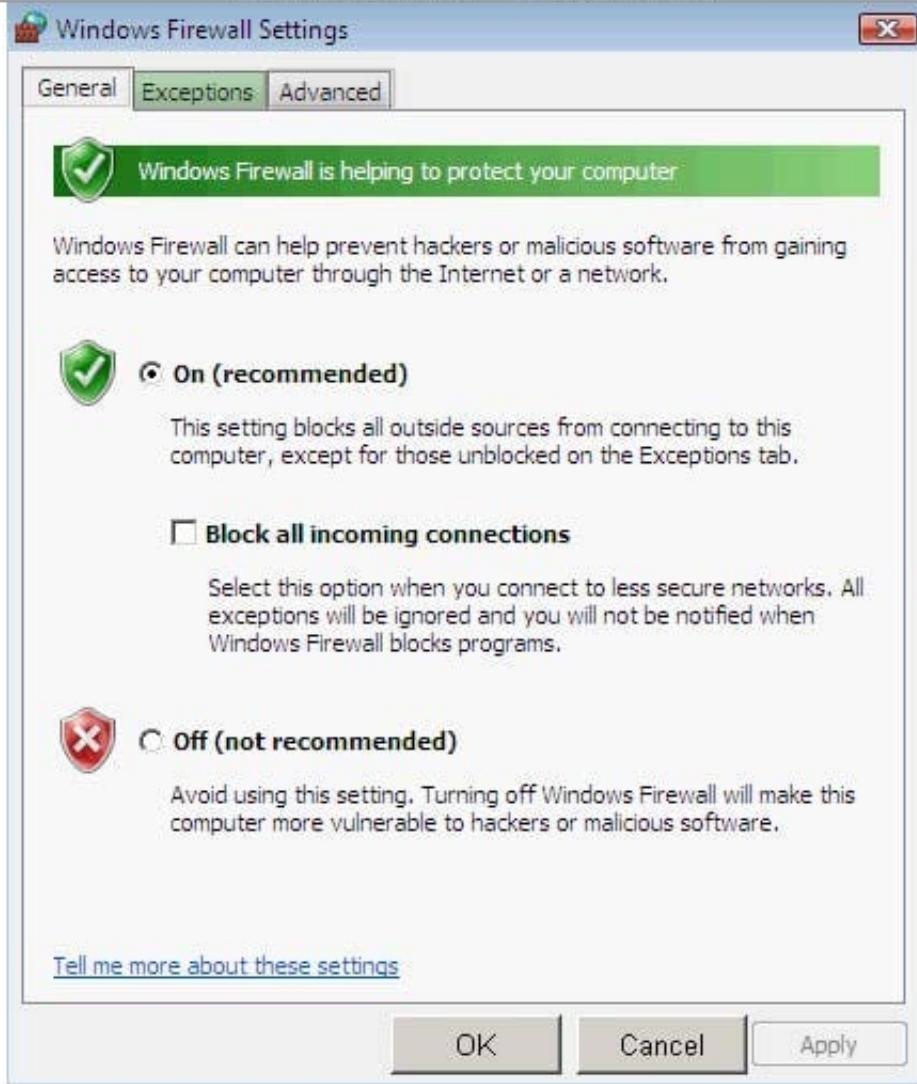
☐ Correct Answer ☒ Your Answer



Correct Answer:

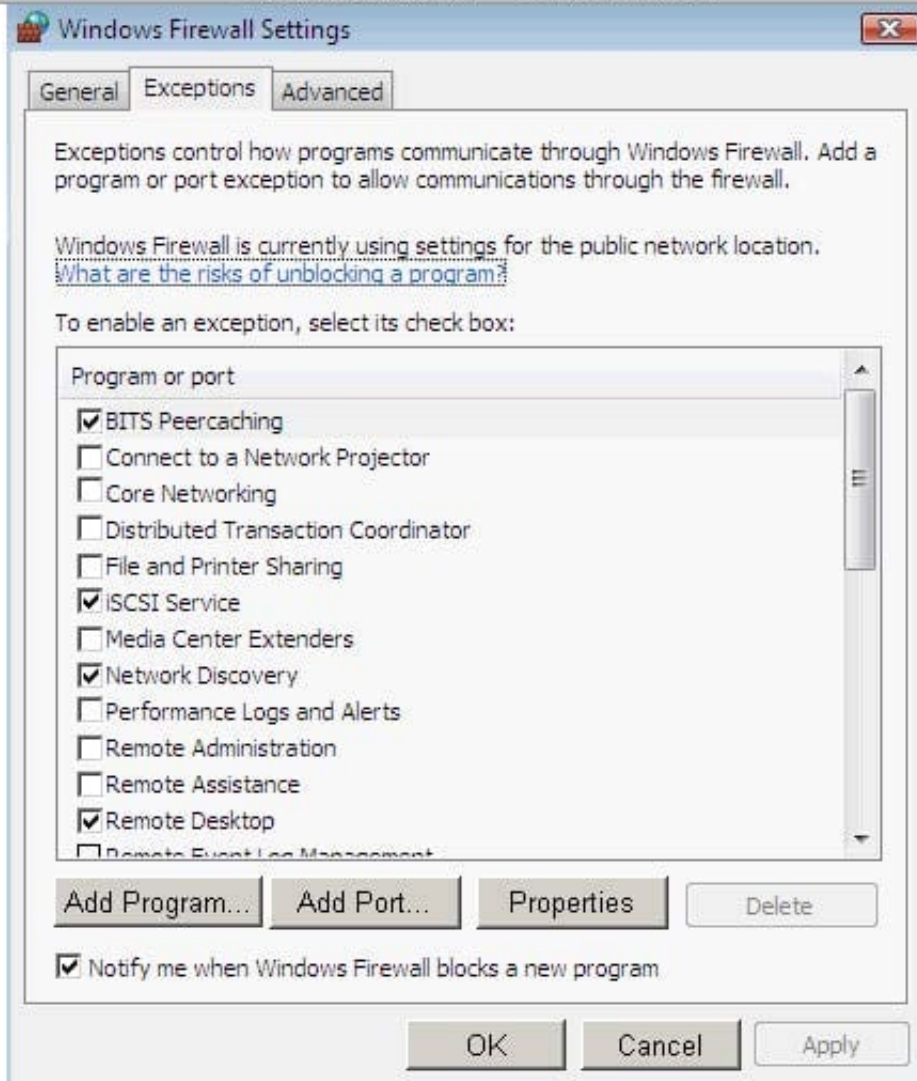


☐ Correct Answer ☒ Your Answer





☒ Correct Answer ☐ Your Answer



## QUESTION 2

Which of the following viruses replaces the boot sector data with its own malicious code?

- A. Chernobyl
- B. Explore.Zip
- C. MBR
- D. Nimda

Correct Answer: C





### QUESTION 3

Which of the following attacks can be mitigated by providing proper training to the employees in an organization?

- A. Social engineering
- B. Smurf
- C. Denial-of-Service
- D. Man-in-the-middle

Correct Answer: A

---

### QUESTION 4

Which of the following is a fake target that deters hackers from locating your real network?

- A. Malware
- B. Honeypot
- C. KFSensor
- D. Spyware

Correct Answer: B

---

### QUESTION 5

Your project is to implement a new operating system for all of the workstations in your company's network. Every workstation must have the new operating system as part of an organization-wide mandate. Many users are not happy with this decision and are resisting the change. Some of the users are complaining that they do not want the operating system at all. What type of stakeholders are these users?

- A. Con stakeholders
- B. Customers
- C. Negative stakeholders
- D. End-users

Correct Answer: C

[GSLC PDF Dumps](#)

[GSLC Practice Test](#)

[GSLC Braindumps](#)