



# HP0-Y50<sup>Q&As</sup>

Architecting HP FlexNetwork Solutions

**Pass HP HP0-Y50 Exam with 100% Guarantee**

Free Download Real Questions & Answers **PDF** and **VCE** file from:

<https://www.geekcert.com/hp0-y50.html>

100% Passing Guarantee  
100% Money Back Assurance

Following Questions and Answers are all new published by HP Official Exam Center

-  **Instant Download** After Purchase
-  **100% Money Back** Guarantee
-  **365 Days** Free Update
-  **800,000+** Satisfied Customers





### QUESTION 1

Customer has a virtualized data center Microsoft Hyper-V Windows Server 2012. The customer has provided this information about the Ms:

Each host has a network (Hyper-V virtual switch) that supports VM productions traffic and owns two server 10G NICs.

Each host has a network (Hyper-V virtual switch) that supports management traffic to the parent partition and owns two server Gigabit NICs. Each rack, the network architect plans to deploy two HP 5920 Series switches, acting as an

Intelligent Resilient Framework (IRF) switch.

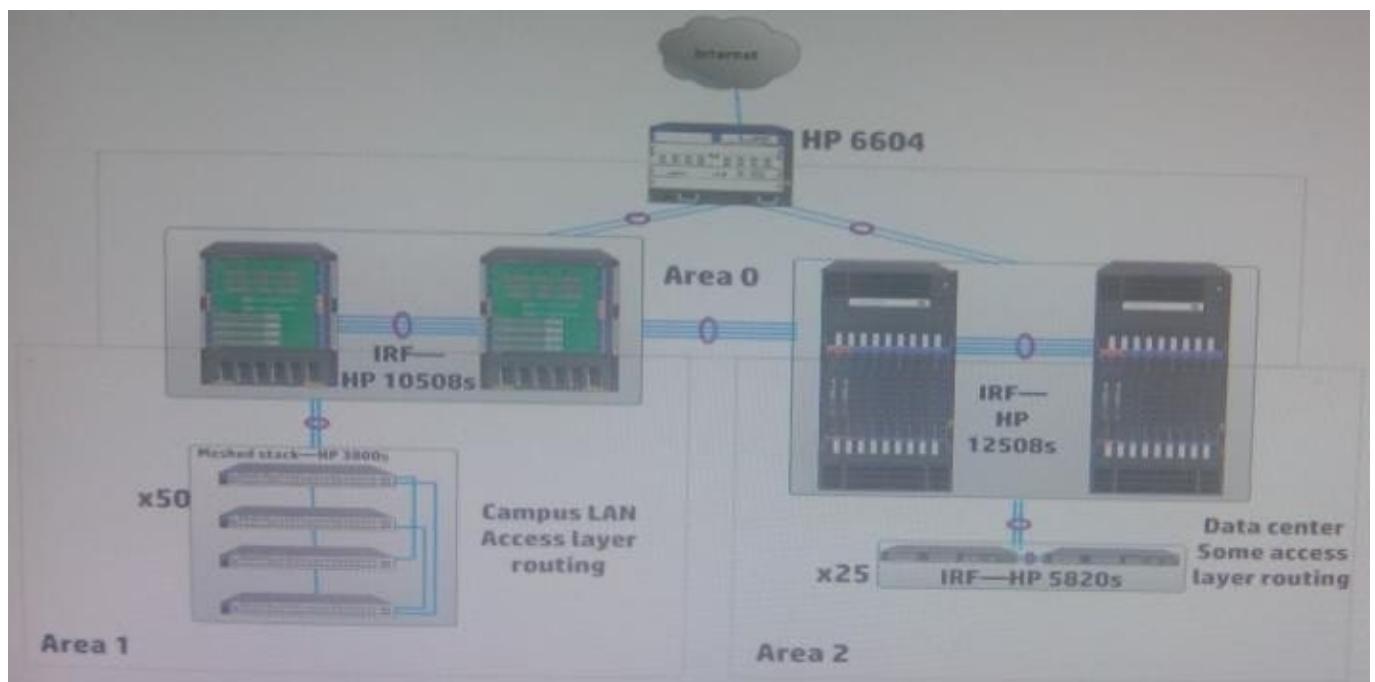
Which additional information does the architect need in order to plan the connections to each host?

- A. Whether the virtual switches use sFlow or Net Stream to load balance traffic over the NICs
- B. Whether the virtual switches use Virtual Ethernet Port Aggregator (VEPA) VLAN tagging
- C. Whether the virtual switches use generic or dynamic NIC teaming (Link Aggregation Control [(LACP)] and their hashing method
- D. Whether the virtual switches support standard Spanning Tree Protocol (STP) or Cisco Per-VLAN Spanning Tree Protocol Plus (PVST+)

Correct Answer: C

### QUESTION 2

Refer to the exhibit.





A network architect is proposing an HP 6600 series router at the core of this enterprise customer network. The router runs Border Gateway Protocol (BGP) and announces the customer networks to the internet service provider (ISP). The router also runs Open Shortest Path First (OSPF) to communicate with the rest of the customer network.

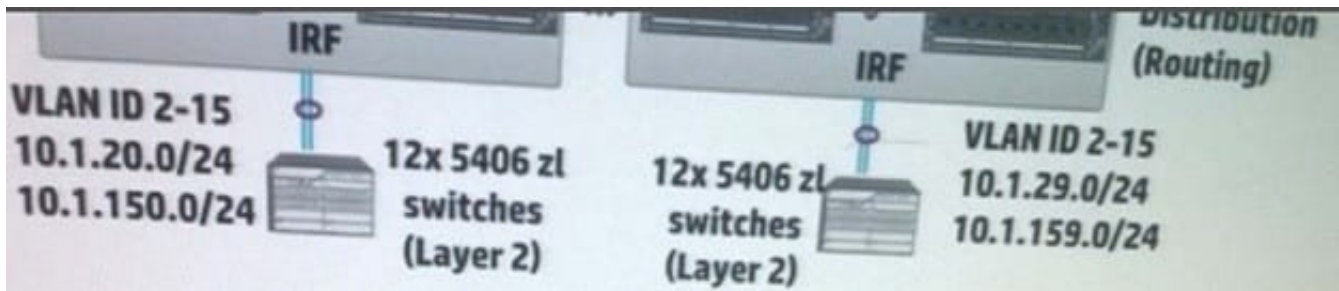
What is an appropriate method for the HP 6604 router to advertise routes to the internet to the other routing switches?

- A. The router should redistribute BGP routes OSPF. Areas 1 and 2 should be configured as stub areas to filter out the external routes
- B. The router should advertise BGP routes into OSPF but filter out all routes except the private network that belongs to the customer
- C. The router should redistribute BGP routes into OSPF. The Area Border Routes (ABRs) should summarize those routes for advertisement in areas 1 and 2
- D. The router should advertise a default route as an Autonomous System Router (ASBR) summary to the other routing devices in area 0

Correct Answer: D

### QUESTION 3

The exhibit shows the topology for a network with 30 access layer switches (only two are shown). Every switch-to-switch link is a Gigabit link. Every area network (VLAN) interface runs Open Shortest Path First (OSPF) and has the IP address shown in the exhibit. The other interface settings are defaults.



The access layer switches support several more VLANs not shown in the exhibit and also run Multiple Spanning Tree protocol (MSTP) loops. What is one recommendation for enhancing convergence time and resiliency for this solution?

- A. Place all of the switch-to-switch links in the same VLAN.
- B. Lower the cost of the VLAN interfaces to reflect the high speed of the links.
- C. Add a BPDU filter to the VLAN interfaces shown in the exhibit.
- D. Raise the OSPF times on the VLAN interfaces.

Correct Answer: D

### QUESTION 4

A network architect is working with a customer to implement a new network design. The network architect has learned that the company has a legacy application hosted on a number of legacy servers. The legacy application must remain



intact and after the new network implementation. As the company plans to continue using it indefinitely.

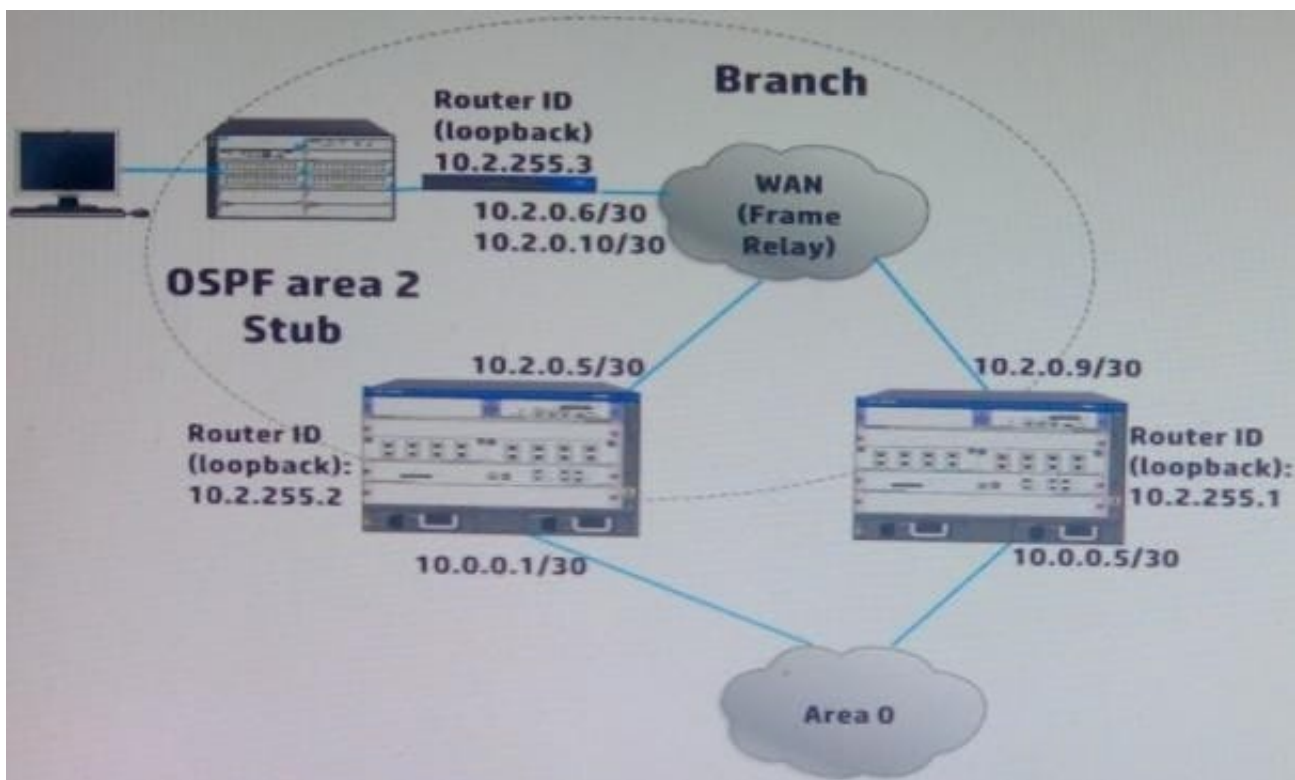
With which stakeholder should the network architect discuss the technical detail of the legacy system and any challenges or specifics about maintaining interoperability?

- A. Chief Executive officer (CEO)
- B. Network Architect or Planning Engineer
- C. Chief Information Officer (CIO) or Voice President (VP)/ Director of IT
- D. Chief Financial Officer (CFO) or Voice President (VP)/ Director of Finance

Correct Answer: B

### QUESTION 5

Refer to the exhibit.



The branch routers have E1 lines into the Frame Relay Service provider network. The exhibit shows just one branch, but the network actually has 30 branches. The HP 6600 Series routers, which are the area border routers (ABRs), have E2

lines into the Frame Relay network.

The routers in the exhibit Open Shortest Path First (OSPF). The enable OSPF on network follows:

In area 2, OSPF is enabled on network 10.2.0.0/16 In area 0, OSPF is enabled on network 10.0.0.0/16



The customer requires resilience at the WAN core. Which design change best supports that requirement?

- A. Add additional links from the HP 6600 Series routers to the WAN
- B. On each branch router, add a floating static route to one of the ABRs in case the OSPF solution fails
- C. Add a Gigabit link between the HP 6600 Series router with a network in area 0 and area 2.
- D. At each branch, add a redundant link between the switch and the router

Correct Answer: B

[HP0-Y50 Practice Test](#)

[HP0-Y50 Study Guide](#)

[HP0-Y50 Exam Questions](#)