



HP2-N29^{Q&As}

Understanding HP TippingPoint Solutions

Pass HP HP2-N29 Exam with 100% Guarantee

Free Download Real Questions & Answers **PDF** and **VCE** file from:

<https://www.geekcert.com/hp2-n29.html>

100% Passing Guarantee
100% Money Back Assurance

Following Questions and Answers are all new published by HP Official Exam Center

-  **Instant Download** After Purchase
-  **100% Money Back** Guarantee
-  **365 Days** Free Update
-  **800,000+** Satisfied Customers





QUESTION 1

To manage an IPS with an SMS, the user must enter which three pieces of information?

- A. IPS superuser name, IPS address, IPS superuser password
- B. device name, password, serial number
- C. IP address, device name, password
- D. operator ID, password, device name

Correct Answer: A

How To: To log on to the SMS Client

1. Double-click the TippingPoint SMS Client icon on your desktop. The SMS Log On screen displays.

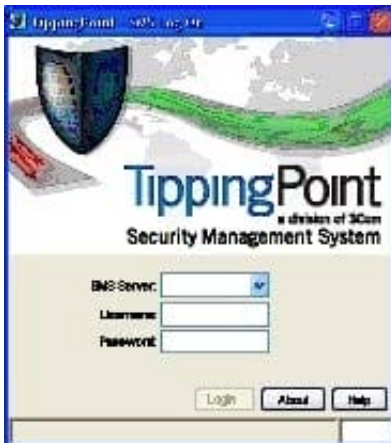


Figure 5 - 2: SMS Logon screen

- 2.
- In the SMS Server field, type the IP address or fully qualified hostname of your SMS Server.
- 3.
- In the Username field, type your user ID. For initial configuration, use SuperUser. In the Password field, type the password you defined in the SMS Setup Wizard.
5. Click Login.

QUESTION 2

When you are configuring a DDoS filter, what does the SYN proxy threshold specify?

- A. how many spoofed SYNs to allow
- B. when to generate an IPS event



- C. how to proxy web traffic
- D. the size of the protected web server

Correct Answer: A

QUESTION 3

Which product is part of HP TippingPoint's overall solution?

- A. Intrusion Prevention System
- B. Systems Management Solution
- C. Threat Diagnosis Center
- D. Intrusion Detection System

Correct Answer: D

QUESTION 4

What does "SMS" stand for?

- A. System Management Solution
- B. Safe Management System
- C. Security Management System
- D. Safety Management System

Correct Answer: C

SMS stands for the Security Management System, which is a central management point for managing different TippingPoint appliances, monitoring events and scheduling reports. Reference: <http://csrc.nist.gov/groups/STM/cmvp/documents/140-1/140sp/140sp1545.pdf>

QUESTION 5

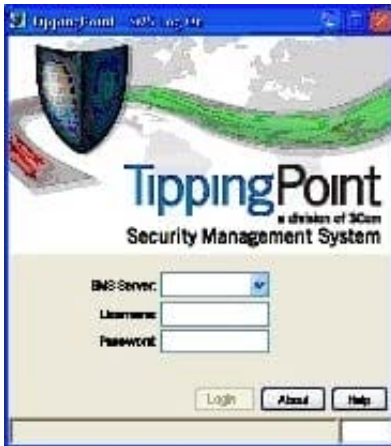
Which pieces of information are needed to log in to the TippingPoint SMS?

- A. IP address, username, password
- B. TOS, DV, password
- C. Username, password, time of day
- D. model number, serial, password

Correct Answer: A



Here is the SMS login screen:



Reference: <http://bizsupport1.austin.hp.com/bc/docs/support/SupportManual/c02586168/c02586168.pdf> (page 43)

[HP2-N29 PDF Dumps](#)

[HP2-N29 Practice Test](#)

[HP2-N29 Braindumps](#)