



# HP2-Z34<sup>Q&As</sup>

Building HP FlexFabric Data Centers

**Pass HP HP2-Z34 Exam with 100% Guarantee**

Free Download Real Questions & Answers **PDF** and **VCE** file from:

<https://www.geekcert.com/hp2-z34.html>

100% Passing Guarantee  
100% Money Back Assurance

Following Questions and Answers are all new published by HP Official Exam Center

- ⚙️ **Instant Download** After Purchase
- ⚙️ **100% Money Back** Guarantee
- ⚙️ **365 Days** Free Update
- ⚙️ **800,000+** Satisfied Customers





### QUESTION 1

When is it recommended to block VRRP hellos between routers in the same VRRP instance?

- A. when the VRRP master and VRRP backup router are part of the same IRF virtual device
- B. when providing two VRRP master routers to be deployed in different data centers
- C. when the VRRP master and VRRP backup router are part of a TRILL domain
- D. when the VRRP master and VRRP backup router are top of the rack (ToR) switches

Correct Answer: A

---

### QUESTION 2

An HP Comware Switch 1 supports FCoE for connected servers with Converged Network Adapters (CNAs). On interface Ten 1/0/1 Switch 1 sends FCoE traffic in VSAN 2 to an upstream switch. Switch 2 which also supports FCoE. What is the correct configuration for interface Ten 1/0/1?

- A. FC trunk port, which permits VSAN 2
- B. bound to a VFC interface, which is a trunk port and permits VSAN 2
- C. bound to a VFC interface, which is an access port in VSAN 2
- D. FC access port in VSAN 2

Correct Answer: C

---

### QUESTION 3

To provide redundancy, a company has multiple data centers that use server virtualization. What is a networking requirement for this scenario?

- A. less bandwidth at the server access layer and more bandwidth at the distribution layer than in a nonvirtualized network
- B. physical network segmentation and isolation implemented at Layers 1 through 7
- C. localized storage volumes that are isolated within each data center
- D. extension of Layer 2 connectivity across the data centers

Correct Answer: D

---

### QUESTION 4

A multi-tenant data center with 12 tenants has the following goals:



Isolate tenants to enable each tenant to have its own routing space

Isolate the data center's services in its own routing space.

Allow for some leaking of route information among tenants and company services

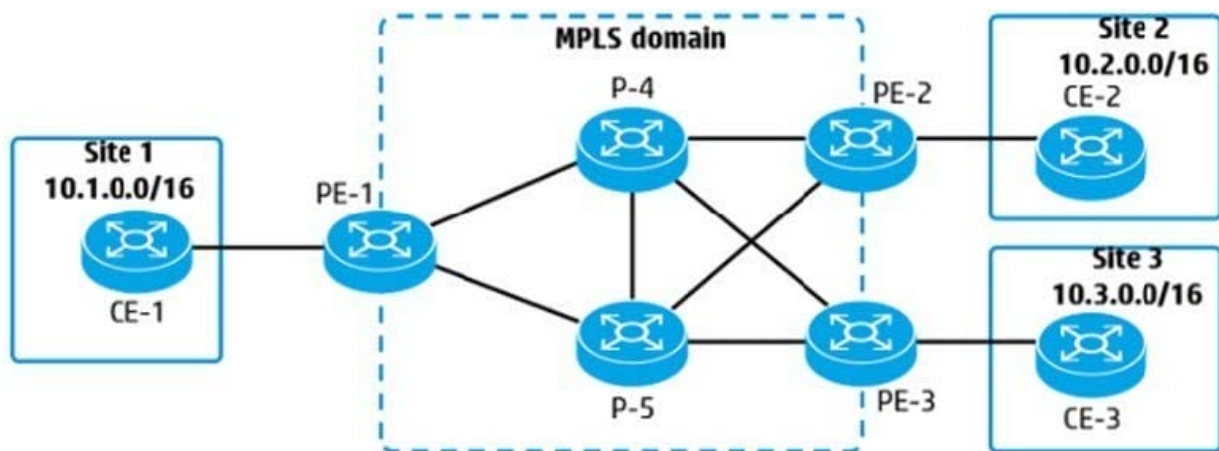
Which feature should be configured on the data center routing switches?

- A. MPLS
- B. VPLS
- C. MDC
- D. Multi-VPN-Instance CE (MCE)

Correct Answer: C

#### QUESTION 5

Refer to the exhibit An administrator is establishing an MPLS domain to allow communication between 10.1.0.0/16, 10.2.0.0/16, and 10.3.0.0/16. The solution will use OSPF routing and LDP. On which PE and P devices should these protocols be configured?



- A. All P and PE devices should be configured with MPLS, but only P devices need OSPF and only PE devices need LDP.
- B. All P and PE devices should be configured with MPLS, LDP, and OSPF.
- C. All P and PE devices should be configured with MPLS, but only PE devices need OSPF and LDP.
- D. All P and PE devices should be configured with MPLS and LDP, but only PE devices need OSPF.

Correct Answer: A