



# HP2-Z34<sup>Q&As</sup>

Building HP FlexFabric Data Centers

## Pass HP HP2-Z34 Exam with 100% Guarantee

Free Download Real Questions & Answers **PDF** and **VCE** file from:

<https://www.geekcert.com/hp2-z34.html>

100% Passing Guarantee  
100% Money Back Assurance

Following Questions and Answers are all new published by HP Official Exam Center

- ⚙️ **Instant Download** After Purchase
- ⚙️ **100% Money Back** Guarantee
- ⚙️ **365 Days** Free Update
- ⚙️ **800,000+** Satisfied Customers



**QUESTION 1**

Refer to the exhibit An HP Comware switch is configured to support FCoE in Fibre Channel Forwarder (FCF) mode. Server1 should be able to discover storage target1 and target2, but not target3. Assume that the zone-aliases have been configured to reference the FC devices correctly

```
zone name 1
  member zone-alias server1
zone name 2
  member zone-alias target1
zone name 3
  member zone-alias target2
zone name 4
  member zone-alias target3
zone name 5
  member zone-alias target1
  member zone-alias target2
zone name 6
  member zone-alias server1
  member zone-alias target1
  member zone-alias target2
```

Which zone(s) should be added to the active zoneset?

- A. zone 1, zone 2, and zone 3
- B. zone 1 and zone 5
- C. zone 4
- D. zone 6

Correct Answer: D

---

**QUESTION 2**

Refer to the exhibit An administrator is setting up MPLS Layer 2 VPN connections between several customer sites and wants to send traffic that arrives on G1/0/1 with VLAN tag 102 to Site 2. Traffic with a different tag will be sent to a different site. How should the administrator implement this\?



Exhibit 1

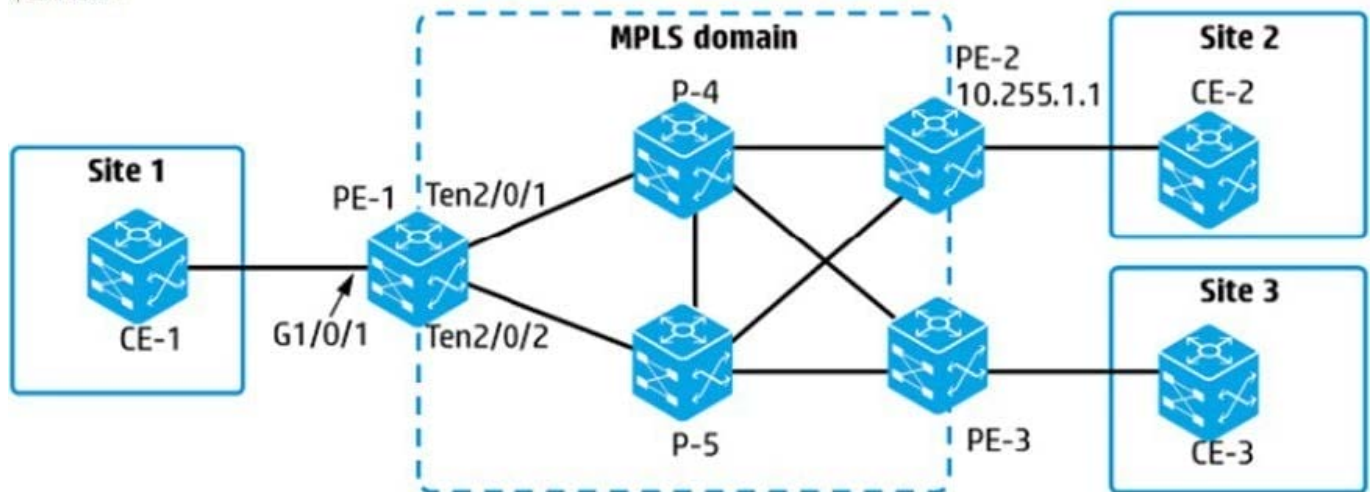


Exhibit 2

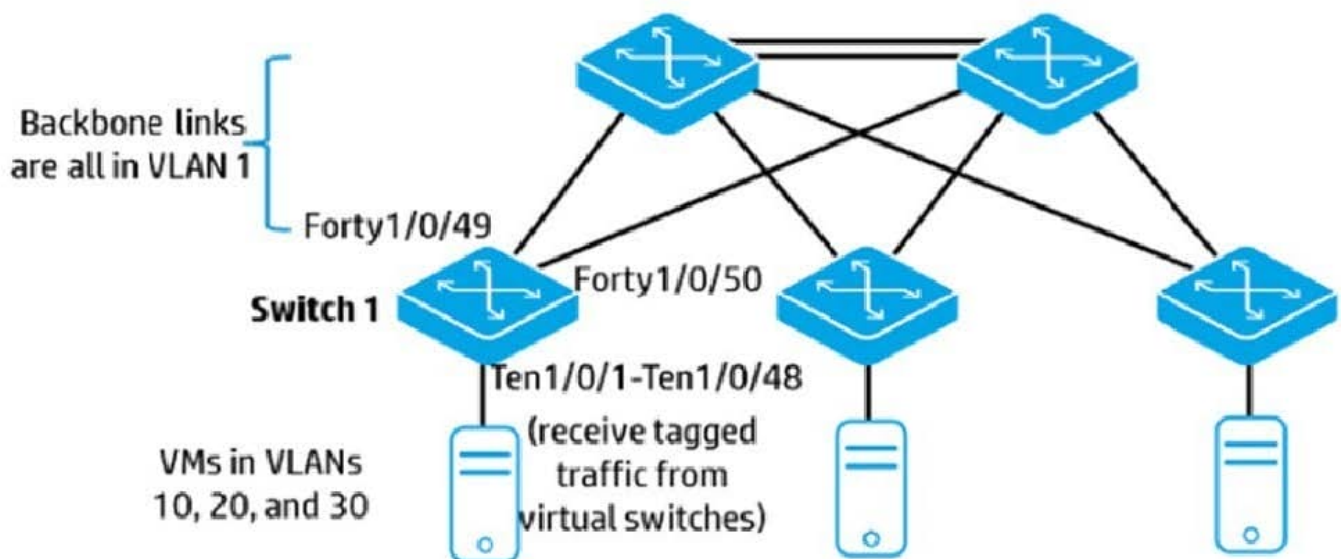
```
interface GigabitEthernet 1/0/1
 service-instance 1
 xconnect-group Site1toSite2
 ac interface GigabitEthernet1/0/1 service-instance 1
 peer 10.255.1.1 pw-id 2
```

- A. Remove service-instance1 from interface G1/0/1 and add it to VLAN 102
- B. Set the encapsulation for service-instance 1 to S-VLAN 102
- C. Set the peer PW outer label to 102 in xconnect-group Site1toSite2.
- D. Set the peer PW inner label to 102 in xconnect-group Site1toSite2.

Correct Answer: B

### QUESTION 3

Refer to the exhibit The company wants to use TRILL in the backbone links shown in the exhibit. Servers use VLANs 10, 20, and 30 and should be able to communicate across the backbone. On which Switch 1 interfaces should the administrator enable TRILL?

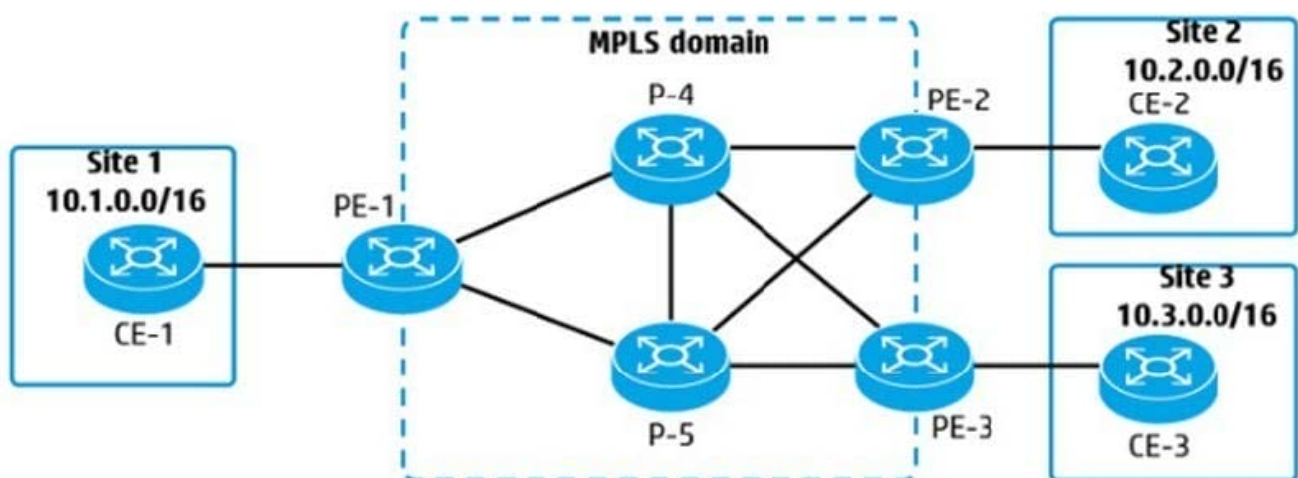


- A. VLAN interface 1 only
- B. VLAN interfaces 1,10, 20, and 30
- C. interfaces Forty1/0/49 and Forty1/0/50 only
- D. interfaces Ten1/0/1 to Ten1/0/48, and Forty1/0/49 and Forty1/0/50

Correct Answer: C

#### QUESTION 4

Refer to the exhibit



An administrator is planning an MPLS solution and wants to make sure that traffic from 10.1.0.0/16 to 10.2.0.0/16 takes



the best path. The solution is not using Traffic Engineering (TE). How does PE-1 choose between the label advertised for 10.2.0.0/16 by P-4 and by P-5?

- A. based on which peer is the higher priority LDP peer
- B. based on which peer is the next hop in the best route in the IP routing table
- C. based on which link has the lower LDP cost
- D. based on which link has the lower MPLS cost

Correct Answer: B

---

#### QUESTION 5

Which statement is correct about defining a Route Distinguisher (RD) for a VPN instance on an HP Comware switch?

- A. The RD is only required when the router runs Border Gateway Protocol (BGP) and must match the BGP router ID.
- B. The RD is only required when the router runs Border Gateway Protocol (BGP) and must be unique to that VPN instance.
- C. The RD is always required and must match the switch global router ID.
- D. The RD is always required and must be unique to that VPN instance.

Correct Answer: C

[Latest HP2-Z34 Dumps](#)

[HP2-Z34 Practice Test](#)

[HP2-Z34 Exam Questions](#)