



# HP2-Z34<sup>Q&As</sup>

Building HP FlexFabric Data Centers

**Pass HP HP2-Z34 Exam with 100% Guarantee**

Free Download Real Questions & Answers **PDF** and **VCE** file from:

<https://www.geekcert.com/hp2-z34.html>

100% Passing Guarantee  
100% Money Back Assurance

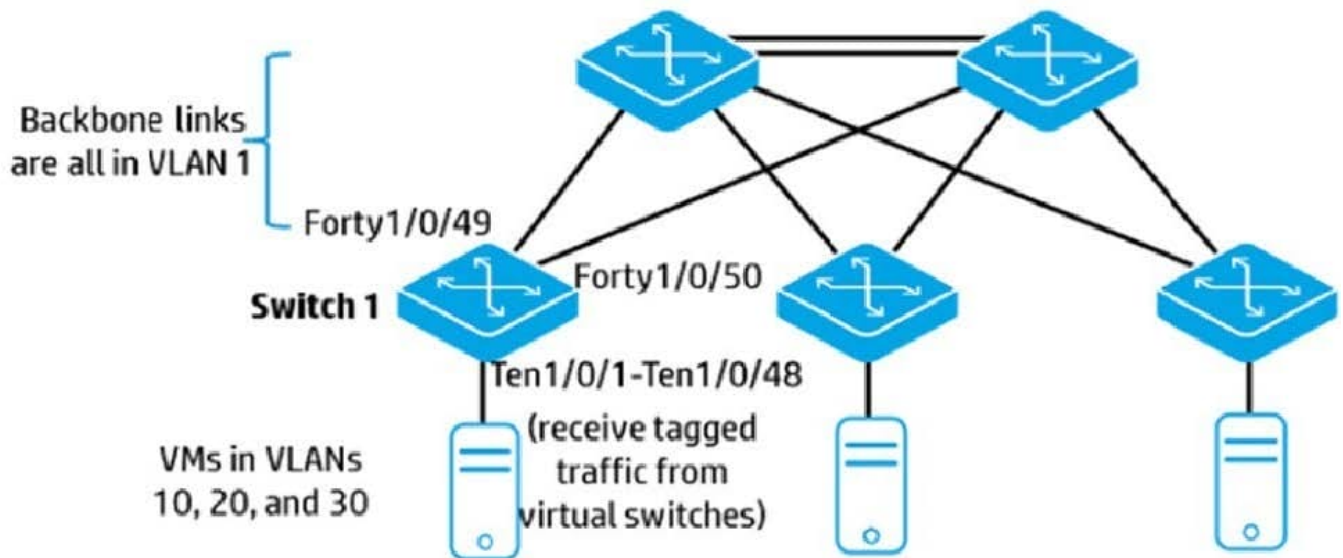
Following Questions and Answers are all new published by HP Official Exam Center

- ⚙️ **Instant Download** After Purchase
- ⚙️ **100% Money Back** Guarantee
- ⚙️ **365 Days** Free Update
- ⚙️ **800,000+** Satisfied Customers



**QUESTION 1**

Refer to the exhibit The company wants to use TRILL in the backbone links shown in the exhibit. Servers use VLANs 10, 20, and 30 and should be able to communicate across the backbone. On which Switch 1 interfaces should the administrator enable TRILL?

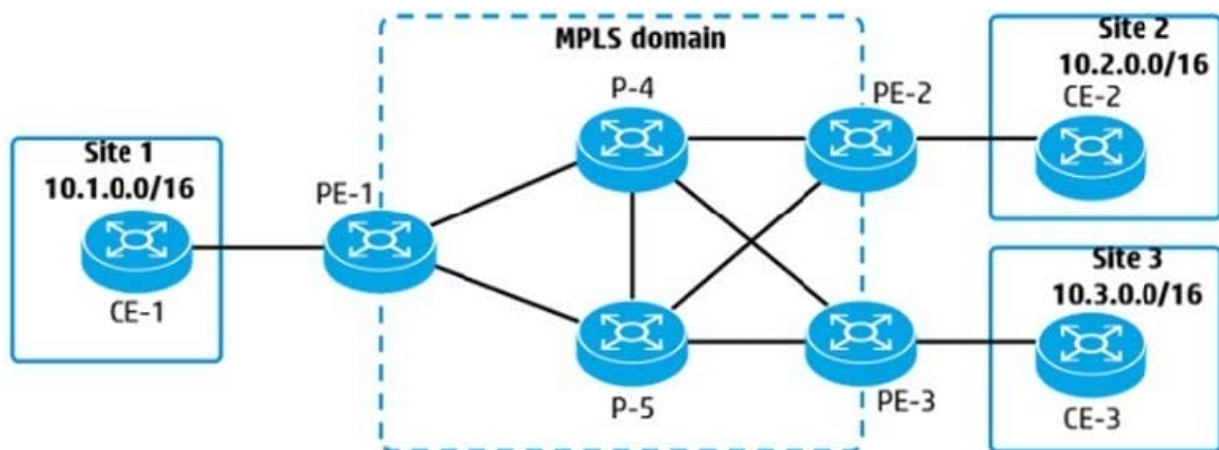


- A. VLAN interface 1 only
- B. VLAN interfaces 1,10, 20, and 30
- C. interfaces Forty1/0/49 and Forty1/0/50 only
- D. interfaces Ten1/0/1 to Ten1/0/48, and Forty1/0/49 and Forty1/0/50

Correct Answer: C

**QUESTION 2**

Refer to the exhibit An administrator is establishing an MPLS domain to allow communication between 10.1.0.0/16.10 2 0 0/16. and 10.3 0.0/16. The solution will use OSPF routing and LDP. On which PE and P devices should these protocols be configured?

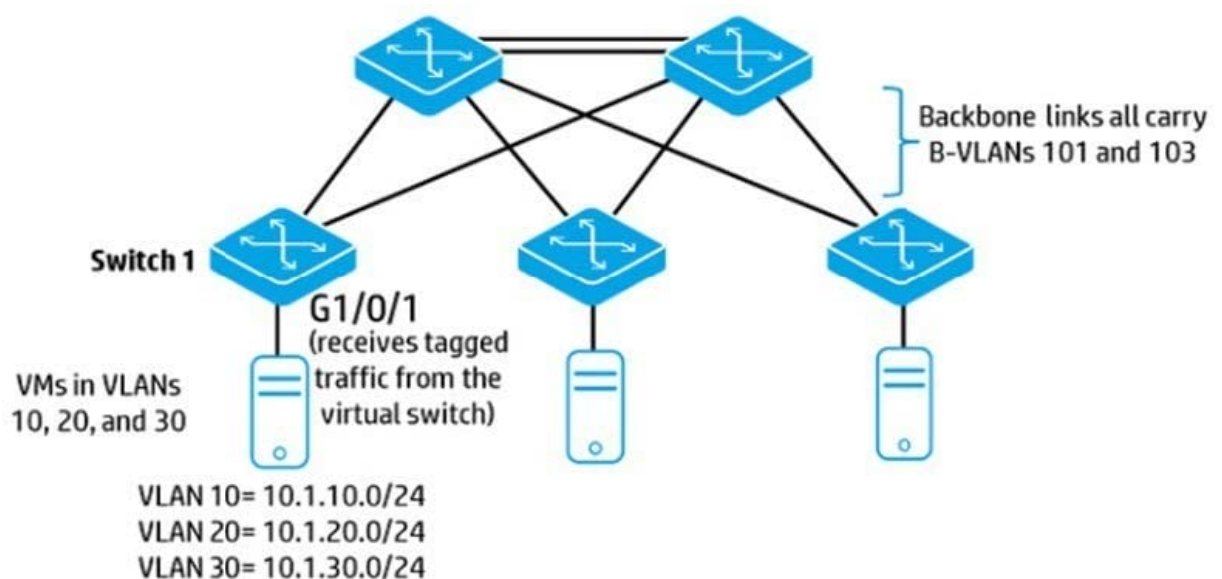


- A. All P and PE devices should be configured with MPLS, but only P devices need OSPF and only PE devices need LDP.
- B. All P and PE devices should be configured with MPLS, LDP, and OSPF.
- C. All P and PE devices should be configured with MPLS, but only PE devices need OSPF and LDP.
- D. All P and PE devices should be configured with MPLS and LDP, but only PE devices need OSPF.

Correct Answer: A

### QUESTION 3

Refer to the exhibit SPBM is being implemented on the backbone links shown in the exhibit. The servers in VLAN 10 (10.1.10.0/24) should be able to communicate at Layer 2 across the backbone. In the vsi section of the configuration on Switch 1, which logical components are required?





- A. the S-VLAN to which the servers are assigned and the ECT algorithm for distributing their traffic
- B. a unique I-SID for the servers and the B-VLAN that should carry their traffic
- C. the S-VLAN to which the servers are assigned and the B-VLAN that should carry their traffic
- D. a unique I-SID for the servers and the S-VLAN to which the servers are assigned

Correct Answer: C

#### QUESTION 4

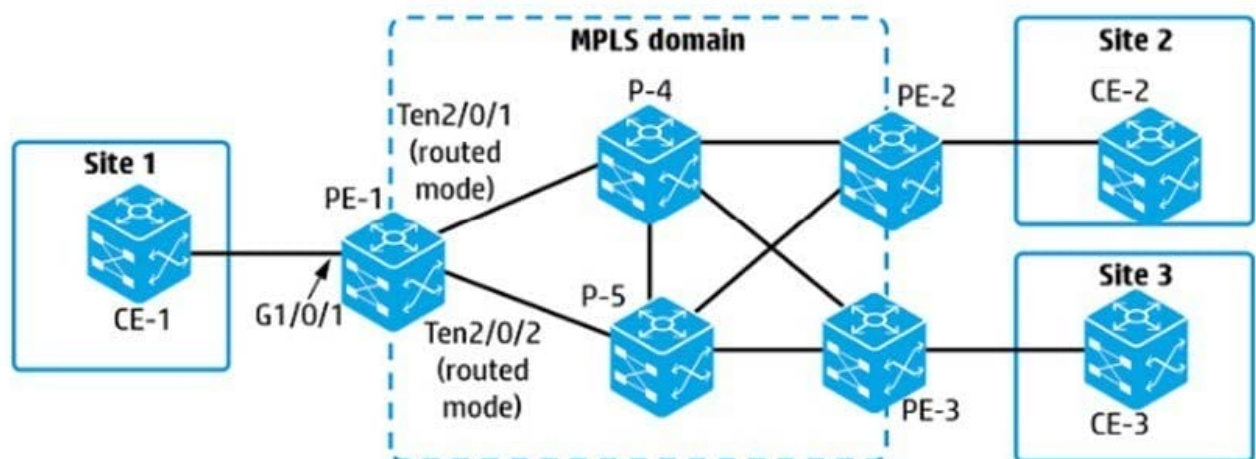
Which option is correct about the flash memory of an HP Comware switch with multiple MDCs?

- A. Each MDC has its own subfolder in the flash, but it can also access another MDC's subfolder if administrators specifically reference the appropriate folder ID.
- B. The entire flash directory is shared by every MDC. All MDCs have root access. Administrators may create new subfolders.
- C. Each MDC including the Admin MDC can only access its own subfolder in the flash. The Admin MDC can also access the root folder, but not the subfolder for other MDCs.
- D. Except for the Admin MDC each MDC can only see and access its own subfolder in the flash. The Admin MDC has root access to the root folder and all subfolders.

Correct Answer: B

#### QUESTION 5

Refer to the exhibit An MPLS Layer 2 VPN is being implemented between Sites 1 and 2. The administrator wants PE-1 and PE-2 to set up the Virtual Circuit (VC) dynamically by using the Martini method. What is required to accomplish this goal?





- A. redistribution of Border Gateway Protocol (BGP) routes into Open Shortest Path First (OSPF) on PE-1 and PE-2
- B. remote LDP session between PE-1 and PE-2
- C. iPSec tunnel between PE-1 and PE-2
- D. VPN instance with the same route distinguisher (RD) on PE-1 and PE-2

Correct Answer: D

[HP2-Z34 VCE Dumps](#)

[HP2-Z34 Practice Test](#)

[HP2-Z34 Braindumps](#)