



HP2-Z34^{Q&As}

Building HP FlexFabric Data Centers

Pass HP HP2-Z34 Exam with 100% Guarantee

Free Download Real Questions & Answers **PDF** and **VCE** file from:

<https://www.geekcert.com/hp2-z34.html>

100% Passing Guarantee
100% Money Back Assurance

Following Questions and Answers are all new published by HP Official Exam Center

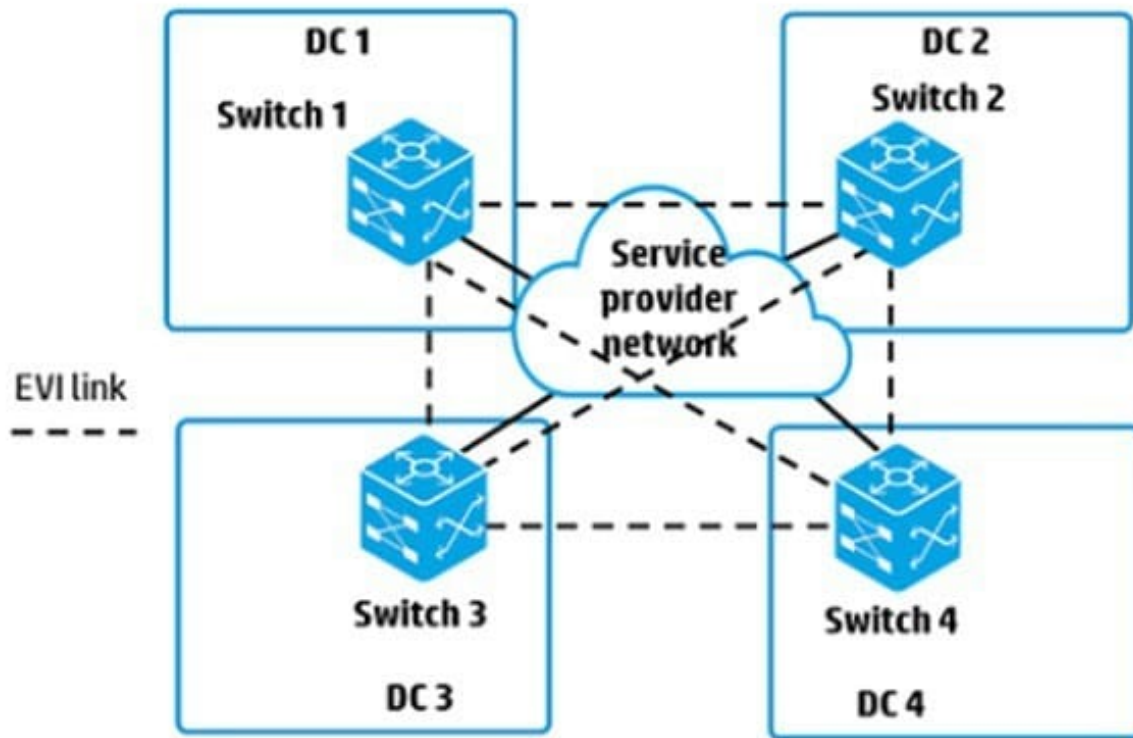
-  **Instant Download** After Purchase
-  **100% Money Back** Guarantee
-  **365 Days** Free Update
-  **800,000+** Satisfied Customers





QUESTION 1

Refer to the exhibit An administrator is creating the EVI network shown in the exhibit Switches 1 and 2 are configured as ENDP servers. and Switch 3 is configured as an ENDP client to the ENDP servers. Which configuration is correct for the EVI tunnel interface on Switch 3?



- A. The source IP address is the switch router ID; the addresses for switches 1, 2, and 4 need to be set as destinations
- B. The source IP address is the address on the connection to the service provider; no other destination IP addresses need to be set.
- C. The source IP address is the address on the connection to the service provider; the addresses for switches 1, 2, and 4 need to be set as destinations
- D. The source IP address is the switch router ID; no other destination IP addresses need to be set.

Correct Answer: C

QUESTION 2

An HP Comware switch port is being connected to a server Converged Network Adaptor (CNA). The CNA and the switch port need to communicate about parameters for various priority flow control (PFC) and bandwidth control mechanisms. How does the administrator enable these communications?

- A. Enable PFC globally and then enable PFC on the switch port
- B. Enable the Fibre Channel (FC) fabric port function on the switch port and then set the port as an F-port.



- C. Enable Ethernet Virtual Bridging (EVB) on the switch port.
- D. Enable LLDP globally and then enable Data Center Bridging eXchange (DCBX) TLVs on the switch port

Correct Answer: D

QUESTION 3

In addition to the Admin MDC, an HP Comware switch supports two MDCs: MDC 2 and MDC

3. The administrator wants to allow tenants for both MDCs to log in to CLI for their own MDC without first accessing the Admin MDC. How can the administrator accomplish this goal?

- A. Assign a console port to each MDC. Tenants can then connect their own terminal equipment to their assigned port.
- B. Define a VLAN as the MDC Management VLAN in the Admin MDC. On each MDC, create this VLAN. Assign a port to it. Set up an IP address on it and set up Telnet or SSH access through it.
- C. Create subinterfaces for the AUX user-interface in the Admin MDC. Assign one of the subinterfaces to each of the MDCs, and set up Telnet or SSH access through that interface.
- D. Define a physical port as the Management-Ethernet interface in the Admin MDC. On each MDC, configure a different IP address for this interface, and set up Telnet or SSH access through it.

Correct Answer: B

QUESTION 4

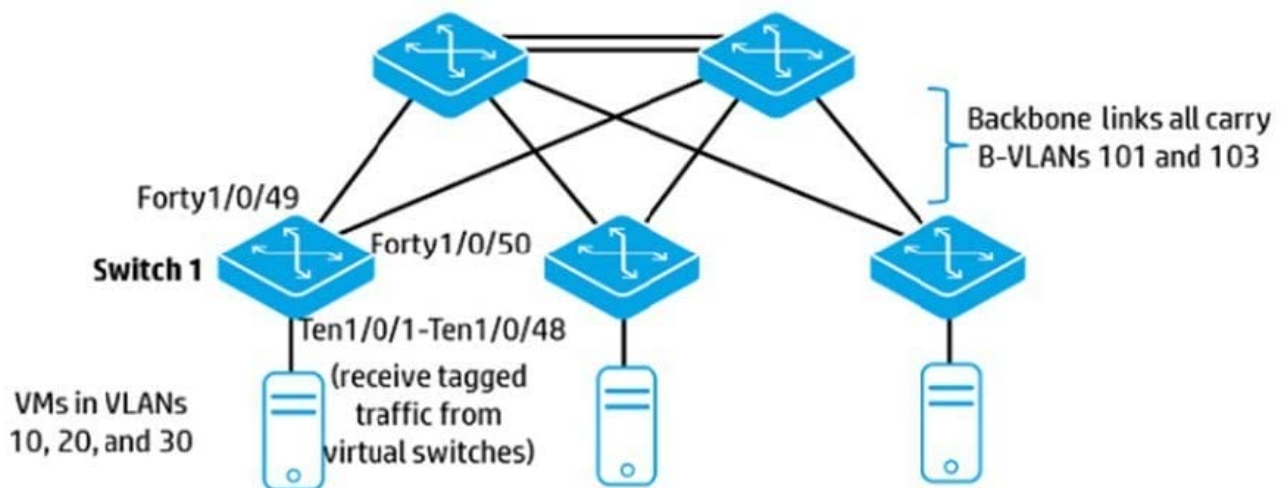
What must be used when implementing the backbone multicast feature to isolate multicasts in the SPBM region?

- A. maximum of two Equal Cost Tree (ECT) algorithms
- B. single I-SID for all VLANs belonging to the same customer
- C. head-end replication for multicasts
- D. odd-numbered VLAN IDs for B-VLANs

Correct Answer: C

QUESTION 5

Refer to the exhibit. An administrator is setting up this data center topology to use SPBM. VMs in the same subnet should be able to communicate at Layer 2 and be isolated at Layer 2 from other subnets. On which Switch 1 interfaces should the administrator enable SPBM?



- A. interfaces Ten1/0/1-Ten1/0/48 and interfaces Forty1/0/49-1/0/50
- B. interfaces Forty 1/0/49-1/0/50 only
- C. VLAN interfaces 101 and 103
- D. VLAN interfaces 10, 20, and 30

Correct Answer: C

[HP2-Z34 Practice Test](#)

[HP2-Z34 Study Guide](#)

[HP2-Z34 Braindumps](#)