



HP2-Z34^{Q&As}

Building HP FlexFabric Data Centers

Pass HP HP2-Z34 Exam with 100% Guarantee

Free Download Real Questions & Answers **PDF** and **VCE** file from:

<https://www.geekcert.com/hp2-z34.html>

100% Passing Guarantee
100% Money Back Assurance

Following Questions and Answers are all new published by HP Official Exam Center

- ⚙️ **Instant Download** After Purchase
- ⚙️ **100% Money Back** Guarantee
- ⚙️ **365 Days** Free Update
- ⚙️ **800,000+** Satisfied Customers



**QUESTION 1**

Refer to the exhibit An administrator is setting up MPLS Layer 2 VPN connections between several customer sites and wants to send traffic that arrives on G1/0/1 with VLAN tag 102 to Site 2. Traffic with a different tag will be sent to a different site. How should the administrator implement this?

Exhibit 1

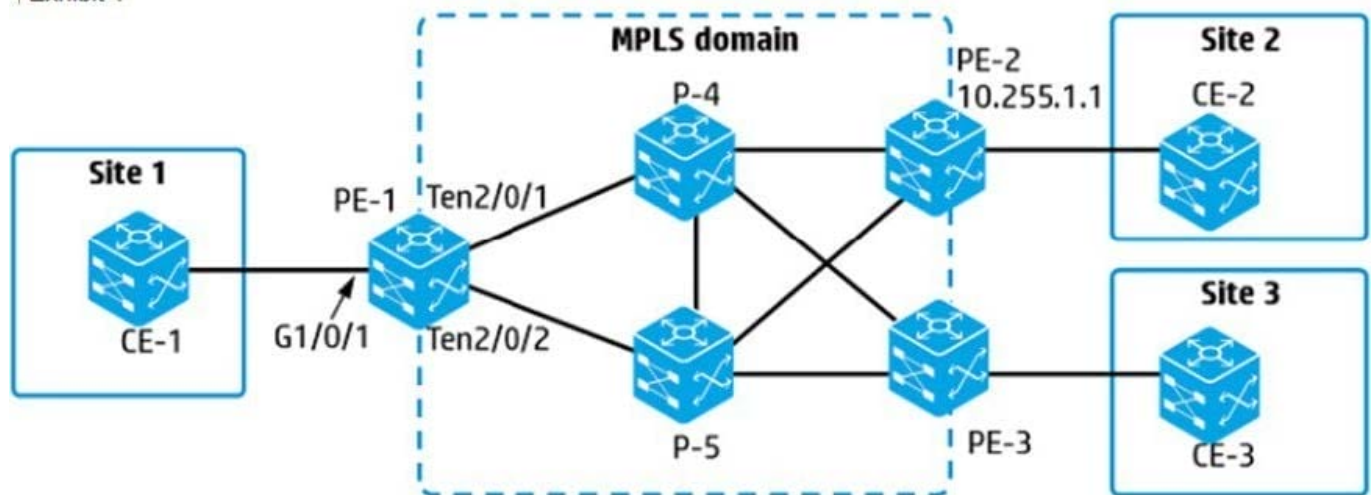


Exhibit 2

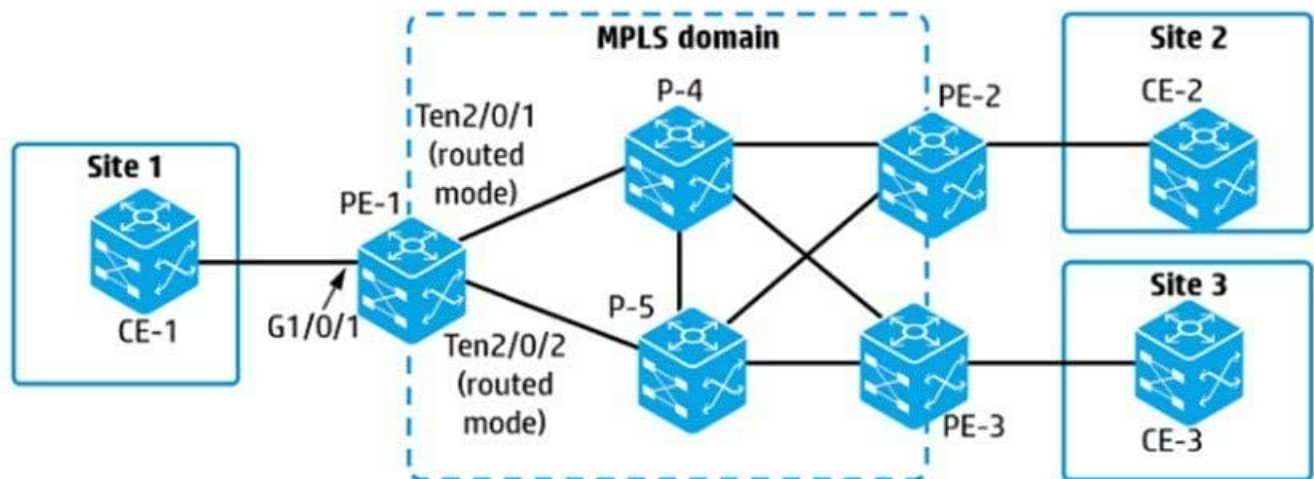
```
interface GigabitEthernet 1/0/1
 service-instance 1
 xconnect-group Site1toSite2
 ac interface GigabitEthernet1/0/1 service-instance 1
 peer 10.255.1.1 pw-id 2
```

- A. Remove service-instance1 from interface G1/0/1 and add it to VLAN 102
- B. Set the encapsulation for service-instance 1 to S-VLAN 102
- C. Set the peer PW outer label to 102 in xconnect-group Site1toSite2.
- D. Set the peer PW inner label to 102 in xconnect-group Site1toSite2.

Correct Answer: B

QUESTION 2

Refer to the exhibit



An administrator is configuring an MPLS VPLS Martini solution on PE-1. The VPLS solution should connect customer A sites 1, 2, and 3. Where should the administrator specify the LDP peers and pseudo wire (PW) label for the PWs?

- A. in service instances on interfaces Ten2/0/1 and Ten2/0/2
- B. in a Virtual Switch Instance (VSI) for customer A
- C. in a service instance on interface G1/0/1
- D. in a global cross-connect group

Correct Answer: A

QUESTION 3

An HP Comware switch uses the MDC feature and has two MDCs defined. Administrators want MDC 1 and MDC 2 to be able to exchange traffic. How should the administrators complete the configuration?

- A. Create a virtual port with the same name on MDC 1 and MDC 2.
- B. Create a virtual port on MDC 0 and tag that port for the MDC 1 and MDC 2 management VLANs
- C. Connect a physical port that belongs to MDC 1 to a physical port that belongs to MDC 2
- D. Configure MDC 0 to permit data exchange and add a backplane mapping between MDC 1 and MDC 2.

Correct Answer: A

QUESTION 4

Refer to the exhibit. An HP Comware switch is configured to support FCoE in Fibre Channel Forwarder (FCF) mode. Server1 should be able to discover storage target1 and target2, but not target3. Assume that the zone-aliases have been configured to reference the FC devices correctly.



```
zone name 1
  member zone-alias server1
zone name 2
  member zone-alias target1
zone name 3
  member zone-alias target2
zone name 4
  member zone-alias target3
zone name 5
  member zone-alias target1
  member zone-alias target2
zone name 6
  member zone-alias server1
  member zone-alias target1
  member zone-alias target2
```

Which zone(s) should be added to the active zoneset?

- A. zone 1, zone 2, and zone 3
- B. zone 1 and zone 5
- C. zone 4
- D. zone 6

Correct Answer: D

QUESTION 5

What is an appropriate situation for configuring an interface as a silent TRILL access port?

- A. The interface connects to another TRILL switch, which has a higher DRB priority than this switch
- B. The interface connects to a downstream non-TRILL switch, which is connected to another TRILL switch. The administrator does not want the interface to carry encapsulated TRILL traffic.
- C. The interface connects to a downstream non-TRILL switch, which is connected to another TRILL switch. The administrator wants the interface to provide a backup path for encapsulated TRILL traffic
- D. The interface connects directly to server NICs. and it is a bridge aggregation on an IRF virtual device.

Correct Answer: A

[Latest HP2-Z34 Dumps](#)

[HP2-Z34 Practice Test](#)

[HP2-Z34 Study Guide](#)