



# ISSMP<sup>Q&As</sup>

ISSMP:Information Systems Security Management Professional

## Pass ISC ISSMP Exam with 100% Guarantee

Free Download Real Questions & Answers **PDF** and **VCE** file from:

<https://www.geekcert.com/issmp.html>

100% Passing Guarantee  
100% Money Back Assurance

Following Questions and Answers are all new published by ISC Official Exam Center

-  **Instant Download** After Purchase
-  **100% Money Back** Guarantee
-  **365 Days** Free Update
-  **800,000+** Satisfied Customers





### QUESTION 1

Which of the following access control models are used in the commercial sector? Each correct answer represents a complete solution. Choose two.

- A. Clark-Biba model
- B. Clark-Wilson model
- C. Bell-LaPadula model
- D. Biba model

Correct Answer: BD

---

### QUESTION 2

Which of the following is used to back up forensic evidences or data folders from the network or locally attached hard disk drives?

- A. WinHex
- B. Vedit
- C. Device Seizure
- D. FAR system

Correct Answer: D

---

### QUESTION 3

Which of the following statements reflect the 'Code of Ethics Preamble' in the '(ISC)2 Code of Ethics'? Each correct answer represents a complete solution. Choose all that apply.

- A. Strict adherence to this Code is a condition of certification.
- B. Safety of the commonwealth, duty to our principals, and to each other requires that we adhere, and be seen to adhere, to the highest ethical standards of behavior.
- C. Advance and protect the profession.
- D. Provide diligent and competent service to principals.

Correct Answer: AB

---

### QUESTION 4

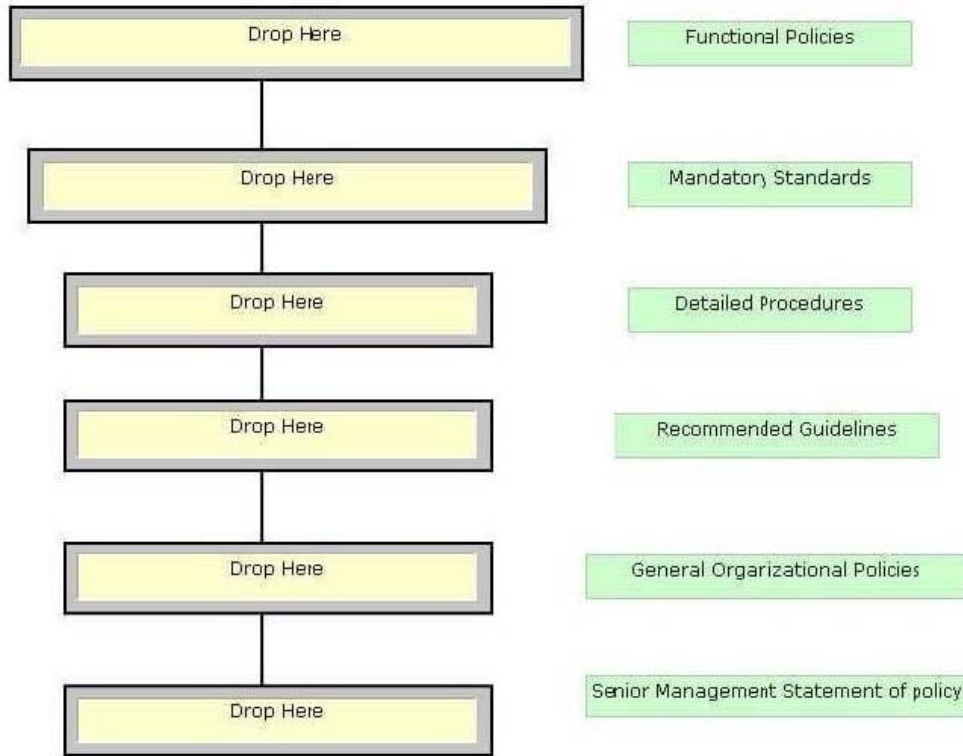
Policies are considered the first and highest level of documentation, from which the lower-level elements of standards,



procedures, and guidelines flow. Drag and drop each policy statement according to its hierarchy level (i.e. from top to bottom).

Select and Place:

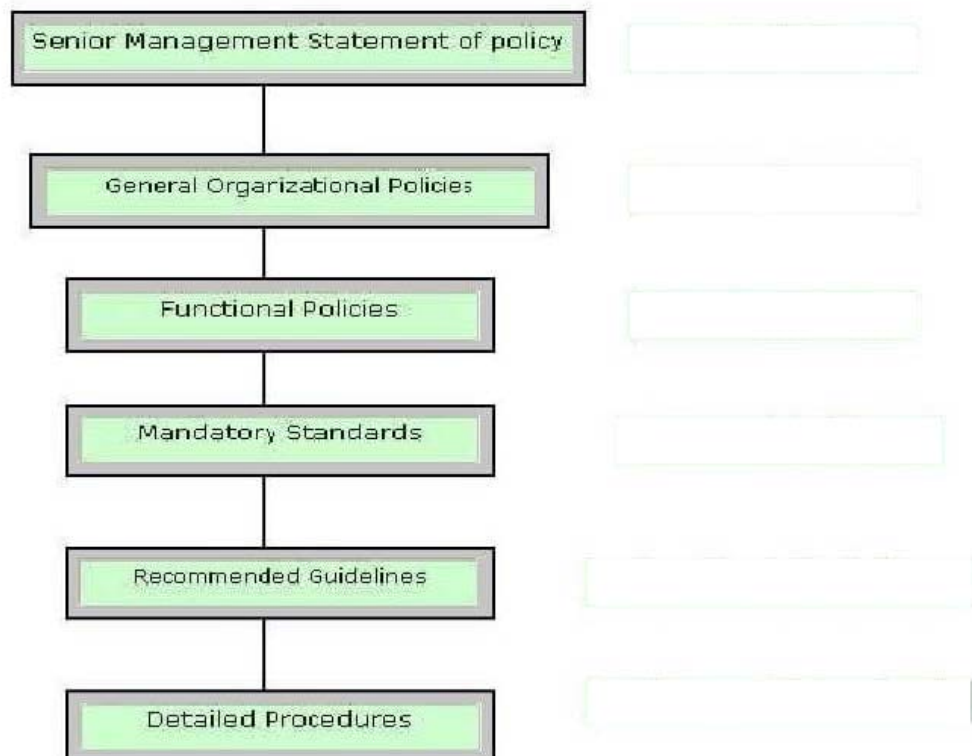
Drag an item from the item list and drop it on the appropriate spot. To remove an item, drag and drop it anywhere on the window.



Correct Answer:



Drag an item from the item list and drop it on the appropriate spot. To remove an item, drag and drop it anywhere on the window.



#### QUESTION 5

Eric is the project manager of the NQQ Project and has hired the ZAS Corporation to complete part of the project work for Eric's organization. Due to a change request the ZAS Corporation is no longer needed on the project even though they have completed nearly all of the project work. Is Eric's organization liable to pay the ZAS Corporation for the work they have completed so far on the project?

- A. Yes, the ZAS Corporation did not choose to terminate the contract work.
- B. It depends on what the outcome of a lawsuit will determine.
- C. It depends on what the termination clause of the contract stipulates.
- D. No, the ZAS Corporation did not complete all of the work.

Correct Answer: C

[ISSMP PDF Dumps](#)

[ISSMP VCE Dumps](#)

[ISSMP Study Guide](#)