



# JN0-633<sup>Q&As</sup>

Security, Professional (JNCIP-SEC)

**Pass Juniper JN0-633 Exam with 100% Guarantee**

Free Download Real Questions & Answers **PDF** and **VCE** file from:

<https://www.geekcert.com/jn0-633.html>

100% Passing Guarantee  
100% Money Back Assurance

Following Questions and Answers are all new published by Juniper  
Official Exam Center

-  **Instant Download** After Purchase
-  **100% Money Back** Guarantee
-  **365 Days** Free Update
-  **800,000+** Satisfied Customers





### QUESTION 1

What is a secure key management protocol used by IPsec?

- A. AH
- B. ESP
- C. TCP
- D. IKE

Correct Answer: D

---

### QUESTION 2

You are asked to ensure traffic from your executive staff does not use the same ISP connection as your other traffic.

Which three actions are required to accomplish this task? (Choose three)

- A. Create a firewall filter to match this traffic and send this traffic to the routing instance.
- B. Create a routing instance and define the type as no-forwarding.
- C. Assign the outgoing interface to the no-forwardinginstance.
- D. Create a routing instance and define the type as forwarding.
- E. Create a RIB group to share routes between the main instance and the routing instance.

Correct Answer: ADE

---

### QUESTION 3

```
-- Exhibit -[edit security] user@srx# show idp {
```

```
idp-policy NewPolicy {
```

```
rulebase-exempt {
```

```
rule 1 {
```

```
description AllowExternalRule;
```

```
match {
```

```
source-address any;
```

```
destination-address
```

```
}
```



```
}  
  
}  
  
}} -- Exhibit -
```

You are performing the initial IDP installation on your new SRX device. You have configured the IDP exempt rulebase as shown in the exhibit, but the commit is not successful.

Referring to the exhibit, what solves the issue?

- A. You must configure the destination zone match.
- B. You must configure the IPS exempt accept action.
- C. You must configure the IPS rulebase.
- D. You must configure the IPS engine flow action to ignore.

Correct Answer: C

---

#### QUESTION 4

What is a benefit of using a group VPN?

- A. It provides a layer of redundancy on top of a point-to-point VPN mesh architecture.
- B. It eliminates the need for point-to-point VPN tunnels.
- C. It provides a way to grant VPN access on a per-user-group basis.
- D. It simplifies IPsec access for remote clients.

Correct Answer: B

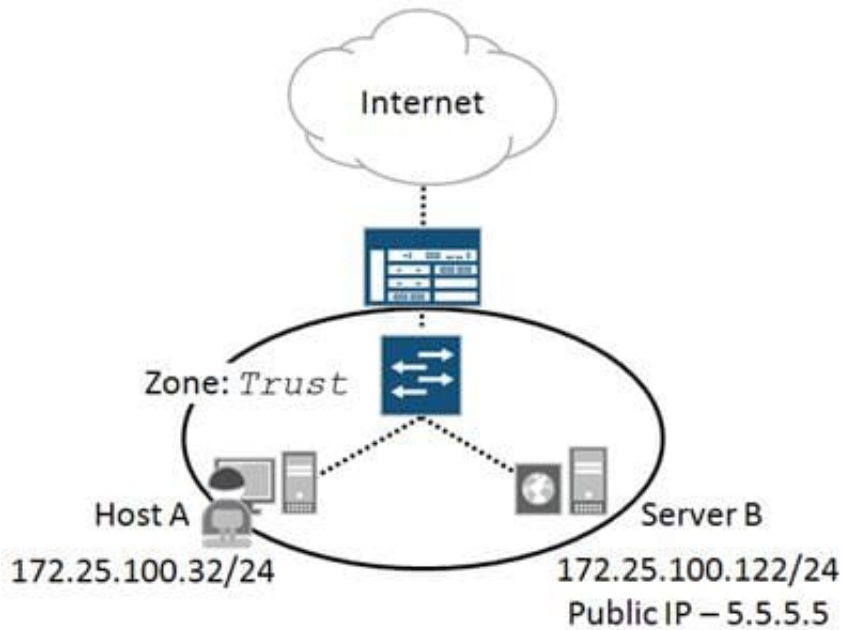
---

#### QUESTION 5

Click the Exhibit button.

Referring to the topology shown in the exhibit, which two configuration tasks will allow Host A to telnet to the public IP address associated with Server B? (Choose two.)

Exhibit:



- A. Configure transparent mode to bypass the NAT processing of Server B's public IP address.
- B. Configure a stateless filter redirecting local traffic destined to Server B's public IP address.
- C. Configure a destination NAT rule that matches local traffic destined to Server B's public IP address.
- D. Configure a source NAT rule that matches local traffic destined to Server B's public IP address.

Correct Answer: CD

[Latest JN0-633 Dumps](#)

[JN0-633 VCE Dumps](#)

[JN0-633 Brindumps](#)