



JN0-660^{Q&As}

Service Provider Routing and Switching, Professional

Pass Juniper JN0-660 Exam with 100% Guarantee

Free Download Real Questions & Answers **PDF** and **VCE** file from:

<https://www.geekcert.com/jn0-660.html>

100% Passing Guarantee
100% Money Back Assurance

Following Questions and Answers are all new published by Juniper
Official Exam Center

- ⚙️ **Instant Download** After Purchase
- ⚙️ **100% Money Back** Guarantee
- ⚙️ **365 Days** Free Update
- ⚙️ **800,000+** Satisfied Customers





QUESTION 1

Which configuration excerpt will advertise all local IPv4 and IPv6 destinations to the network?



```
A. protocols {
    cspf {
        area 0.0.0.0 {
            family inet {
                interface all;
            }
            family inet6 {
                interface all;
            }
        }
    }
}

B. protocols {
    cspf {
        export ipv6 routes;
        area 0.0.0.0 {
            interface all;
        }
    }

    policy-options {
        policy-statement ipv6-routes {
            term get-ipv6 {
                from family inet6;
                then accept;
            }
        }
    }
}

C. protocols {
    cspf {
        area 0.0.0.0 {
            interface all;
        }
    }
    cspf3 {
        area 0.0.0.0 {
            interface all;
        }
    }
}

D. protocols {
    cspf3 {
        export ipv4 routes;
        area 0.0.0.0 {
            interface all;
        }
    }

    policy-options {
        policy-statement ipv4-routes {
            term get-ipv4 {
                from family inet;
                then accept;
            }
        }
    }
}
```



A. Option A

B. Option B

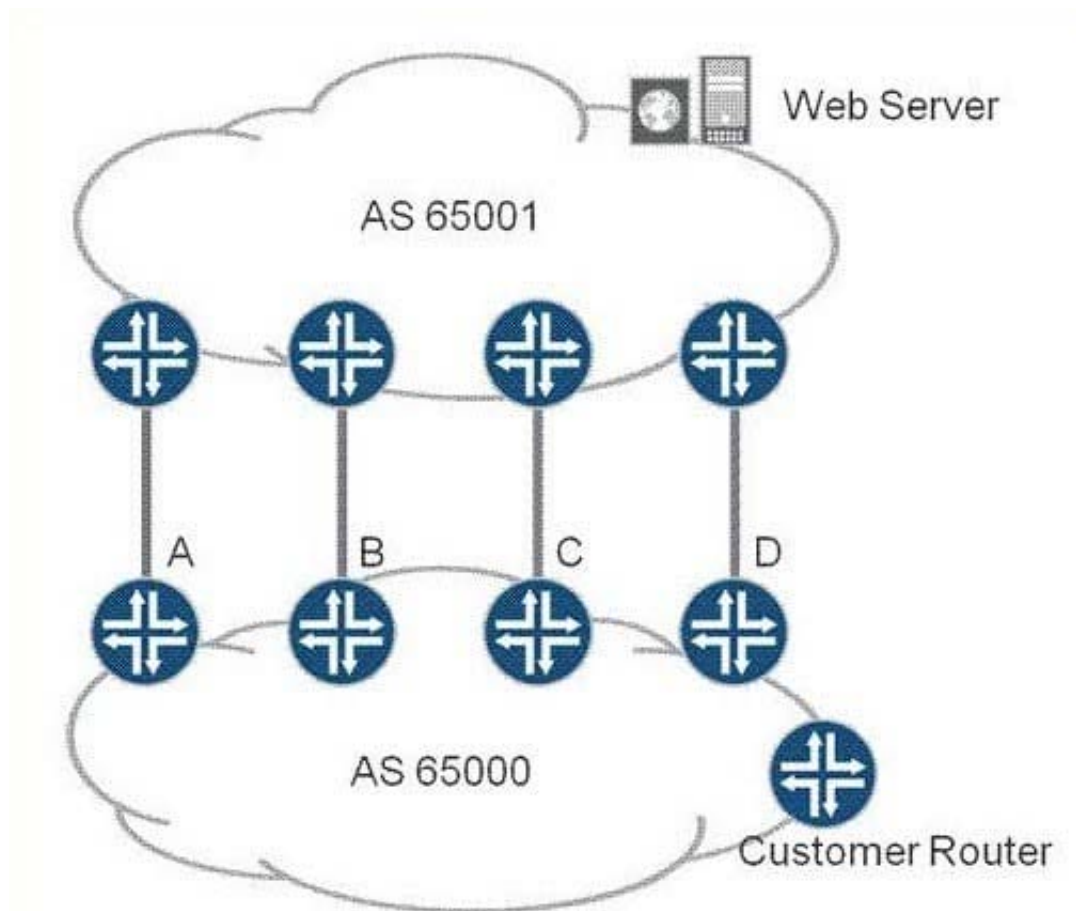
C. Option C

D. Option D

Correct Answer: C

QUESTION 2

Click the Exhibit button.



You are the administrator of AS 65000. In the exhibit, there are four links between your network (AS 65000) and your upstream provider (AS 65001). You have an export policy on all of your routers to advertise your routes such that: Router A. MED 100, AS Path (65000), Origin 1 Router B. MED 100, AS Path (65000 65000), Origin 0 Router C. MED 50, AS Path (65000 65000), Origin 1 Router D. MED 50, AS Path (65000), Origin 0

Through which link will traffic from the Web server enter your network (AS 65000)?

A. Router A

B. Router B



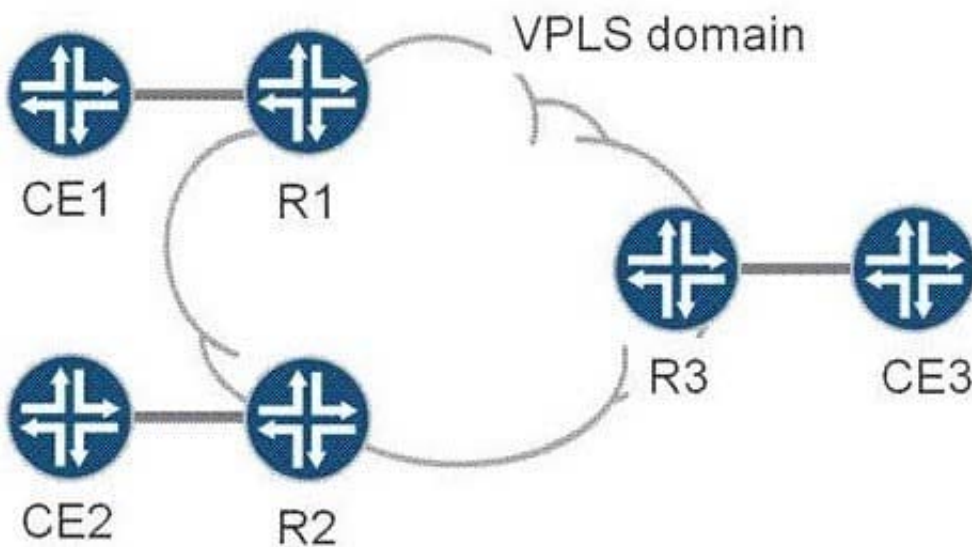
C. Router C

D. Router D

Correct Answer: D

QUESTION 3

Click the Exhibit button.



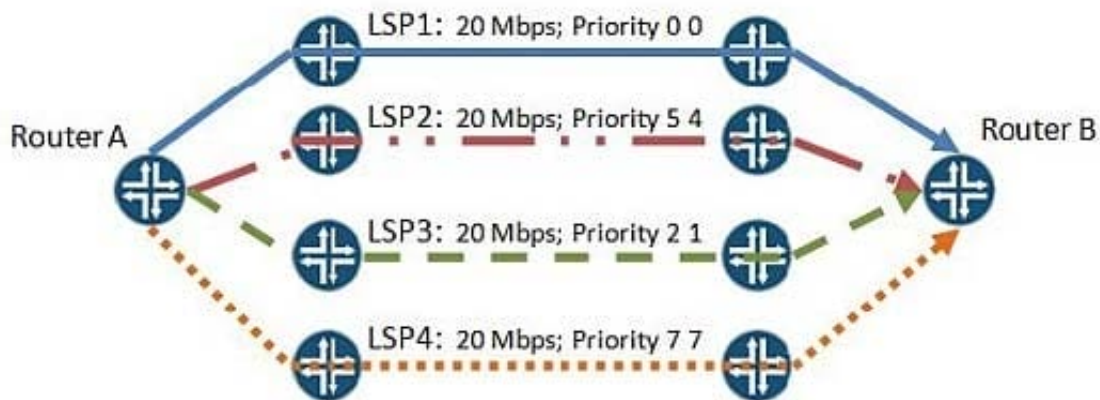
CE1, CE2, and CE3 are part of a single VPLS VPN. R1, R2, and R3 are PEs in the provider network, and have just been powered on. The VPLS domain has converged, and frames have passed between all CEs in the last minute. An Ethernet frame has just arrived at R3 from CE3. It has a source MAC address of CE3 and a destination MAC address of CE1. What does R3 do with the Ethernet frame?

- A. Drops the packet as the destination MAC address is not for R3.
- B. Drops the packet as the destination MAC address is not in R3's MAC table.
- C. Forwards the packet to R1 only.
- D. Forwards the packet to R1 and R2.

Correct Answer: C

QUESTION 4

-- Exhibit



-- Exhibit -Click the Exhibit button.

Your network has multiple LSPs between Router A and Router B, as shown in the exhibit. You add a new LSP between these routers with the following parameters:

LSP5: 20 Mbps; Priority 4 3

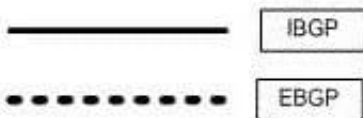
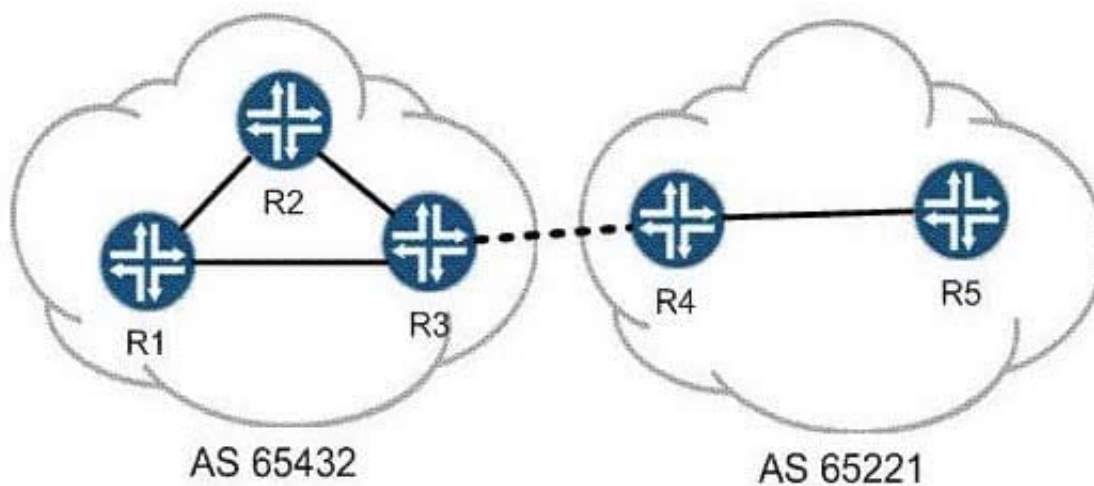
Assuming no link has 20 Mbps available, which LSP will be preempted by LSP5?

- A. LSP1
- B. LSP2
- C. LSP3
- D. LSP4

Correct Answer: D

QUESTION 5

Click the Exhibit button.



R3 is announcing a route to R4 using EBGP, as shown in the exhibit. All routers in AS 65221 should learn this route, but it should not be announced to any other AS. What can be done to enforce this behavior?

- A. R3 should add the community no-export to the route prior to announcing it.
- B. R3 should add the community no-advertise to the route prior to announcing it.
- C. R4 should add the community no-announce after receiving the route.
- D. R4 should add the community no-advertise after receiving the route.

Correct Answer: A

[JN0-660 Practice Test](#)

[JN0-660 Exam Questions](#)

[JN0-660 Braindumps](#)