



JN0-660^{Q&As}

Service Provider Routing and Switching, Professional

Pass Juniper JN0-660 Exam with 100% Guarantee

Free Download Real Questions & Answers **PDF** and **VCE** file from:

<https://www.geekcert.com/jn0-660.html>

100% Passing Guarantee
100% Money Back Assurance

Following Questions and Answers are all new published by Juniper
Official Exam Center

- ⚙️ **Instant Download** After Purchase
- ⚙️ **100% Money Back** Guarantee
- ⚙️ **365 Days** Free Update
- ⚙️ **800,000+** Satisfied Customers





QUESTION 1

You are monitoring the control plane traffic using a network analyzer on an Ethernet network segment with all routers configured with IS-IS routing. Which two statements are true? (Choose two.)

- A. DIS will send hellos more frequently than other IS-IS devices.
- B. L1 and L2 hellos are combined in a single hello packet.
- C. PSNPs are sent periodically.
- D. Only the DIS will send CSNPs periodically.

Correct Answer: AD

QUESTION 2

Click the Exhibit button.

```
drop-profiles {  
  profileA {  
    fill-level 60 drop-probability 60;  
    fill-level 80 drop-probability 70;  
    fill-level 100 drop-probability 100;  
  }  
}
```

Given the drop profile in the exhibit, what is the drop probability when the buffer reaches 90% full?

- A. 60%
- B. 70%
- C. 85%
- D. 90%

Correct Answer: B

QUESTION 3

Click the Exhibit button.



```
[edit protocols mpls]
user@router# show
label-switched-path to-egress {
  to 172.40.21.1;
  primary path-one;
  secondary path-two;
}
path path-one {
  172.20.20.5;
}
path path-two {
  172.20.21.5;
}
interface all;
interface fxp0.0 {
  disable;
}
```

Based on the configuration shown in the exhibit, which two statements are correct? (Choose two.)

- A. The secondary path is only signaled if the primary path fails.
- B. The secondary path is signaled and in standby mode.
- C. The LSP will revert back to the primary path when it becomes available.
- D. The LSP will not revert back to the primary path until the session is cleared.

Correct Answer: AC

QUESTION 4

Click the Exhibit button.



```
[edit]
user@router# show class-of-service
schedulers {
  top {
    transmit-rate percent 40;
    priority strict-high;
  }
  critical {
    transmit-rate percent 25;
    priority high;
  }
  less-critical {
    transmit-rate percent 15;
    priority medium-high;
  }
  data {
    transmit-rate percent 10;
    priority medium-low;
  }
  best-effort {
    transmit-rate percent 5;
    priority low;
  }
}
```

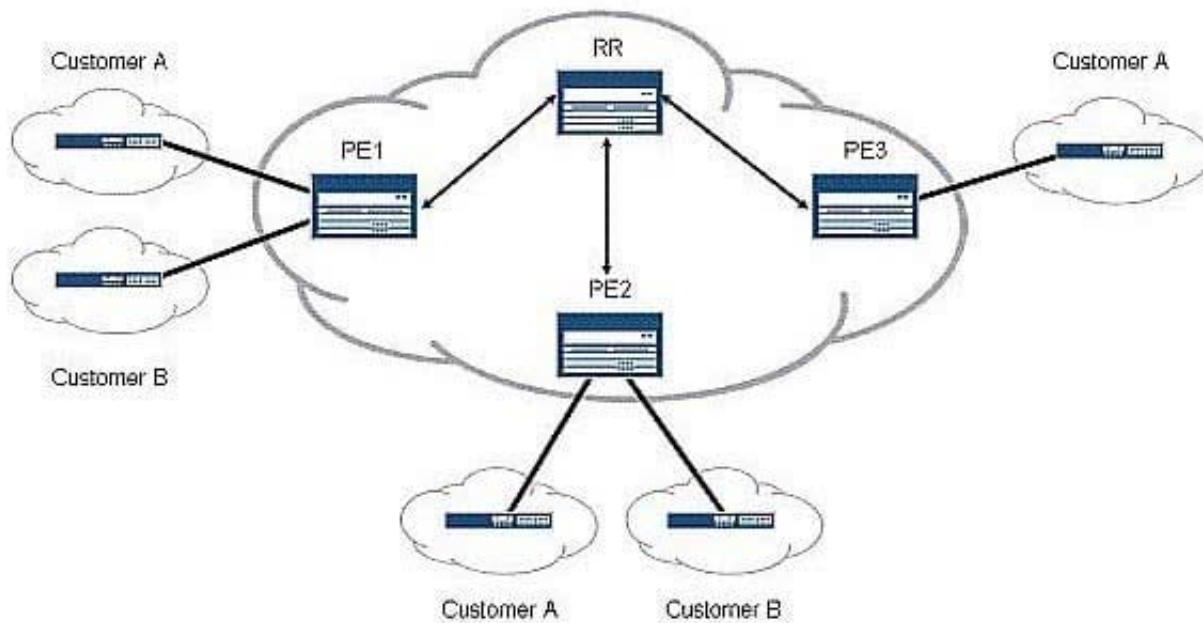
Traffic is flowing through an MX Series router. Traffic using the top and critical schedulers is out of profile, while all other traffic is currently in profile. Referring to the exhibit, which two statements are correct? (Choose two.)

- A. The top queue is serviced before the best-effort queue.
- B. The top queue is serviced after the best-effort queue.
- C. The critical queue is serviced before the best-effort queue.
- D. The critical queue is serviced after the best-effort queue.

Correct Answer: AD

QUESTION 5

Click the Exhibit button.



Referring to the exhibit, you want to save CPU processing load on the PE3 router by preventing the reception of routes belonging to Customer B. Which Layer 3 VPN scaling mechanism provides this functionality?

- A. route origin
- B. route refresh
- C. route reflection
- D. route target filtering

Correct Answer: D

[Latest JN0-660 Dumps](#)

[JN0-660 VCE Dumps](#)

[JN0-660 Study Guide](#)