



# NS0-502<sup>Q&As</sup>

NetApp Certified Implementation Engineer-SAN and Virtualization

## Pass NetApp NS0-502 Exam with 100% Guarantee

Free Download Real Questions & Answers **PDF** and **VCE** file from:

<https://www.geekcert.com/ns0-502.html>

100% Passing Guarantee  
100% Money Back Assurance

Following Questions and Answers are all new published by NetApp  
Official Exam Center

- ⚙️ **Instant Download** After Purchase
- ⚙️ **100% Money Back** Guarantee
- ⚙️ **365 Days** Free Update
- ⚙️ **800,000+** Satisfied Customers





#### QUESTION 1

When does Fractional Reservation reserve space from the volume?

- A. Volume Creation
- B. LUN Creation
- C. LUN SnapMirror
- D. Volume Snapshot

Correct Answer: D

---

#### QUESTION 2

In Data ONTAP 7.3, what is a portset bound to?

- A. a WWPN
- B. a LUN
- C. an igroup
- D. a volume

Correct Answer: C

---

#### QUESTION 3

You are creating an acceptance test plan and the subject of performance is raised.

How should you define what the minimum performance should be?

- A. You should look up the test results for a similar system in previous performance testing and use those numbers.
- B. You should work with the customer to understand their performance expectations and determine the minimum performance they require for the application this system will support.
- C. You should use the published maximum performance specifications for this system.
- D. You should use the published minimum performance specifications for this system.

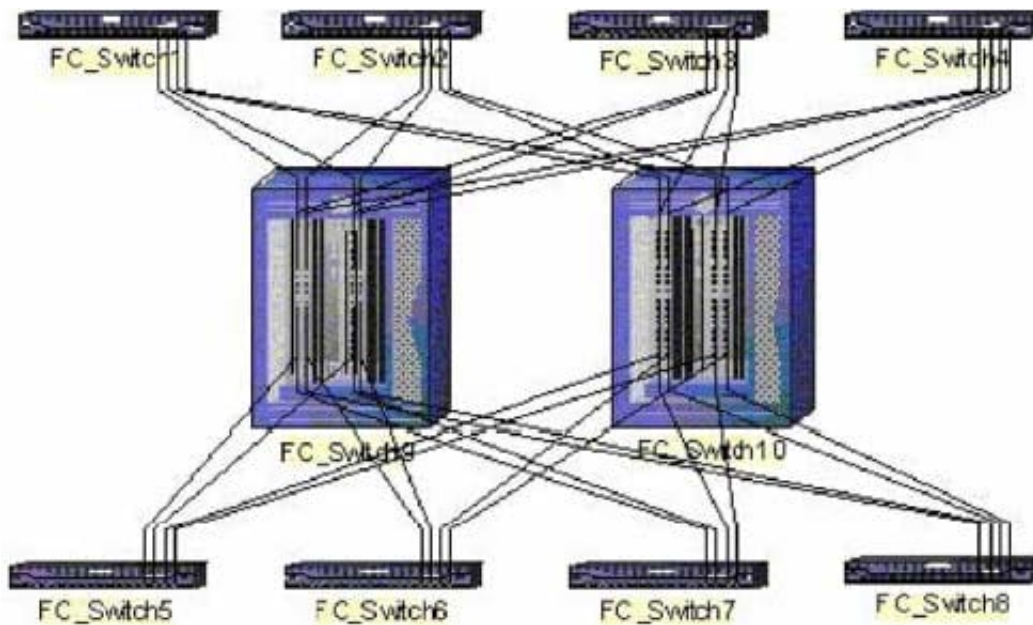
Correct Answer: B

---

#### QUESTION 4



Click the Exhibit button.



Based on the diagram shown, what is the appropriate FC switch topology?

- A. full mesh
- B. core-edge
- C. full cascade
- D. partial mesh

Correct Answer: B

#### QUESTION 5

Which type of zoning does NetApp recommend?

- A. World Wide Name zoning
- B. World Wide Port Name zoning
- C. World Wide Node Name zoning
- D. Switch World Wide Name zoning

Correct Answer: B

[NS0-502 PDF Dumps](#)

[NS0-502 VCE Dumps](#)

[NS0-502 Practice Test](#)