



# OMG-OCUP-100<sup>Q&As</sup>

OMG-Certified UML Professional Fundamental Exam

**Pass OMG OMG-OCUP-100 Exam with 100% Guarantee**

Free Download Real Questions & Answers **PDF** and **VCE** file from:

<https://www.geekcert.com/omg-ocup-100.html>

100% Passing Guarantee  
100% Money Back Assurance

Following Questions and Answers are all new published by OMG  
Official Exam Center

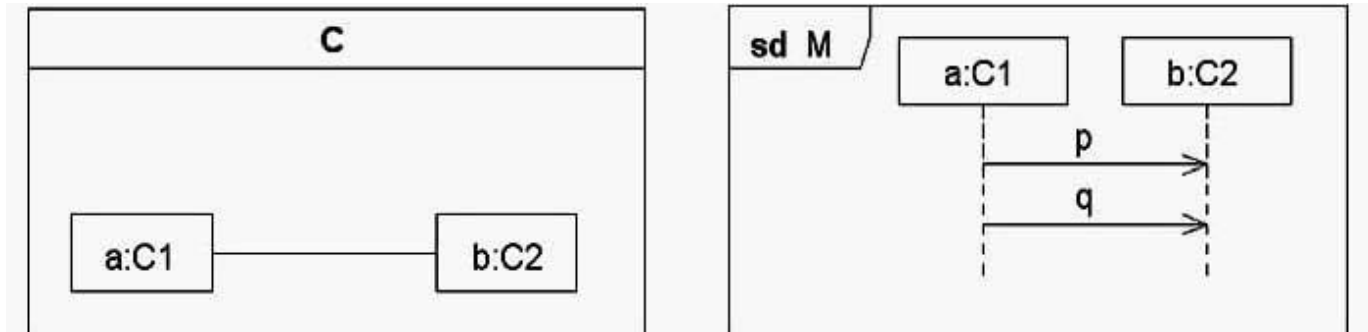
- ⚙️ **Instant Download** After Purchase
- ⚙️ **100% Money Back** Guarantee
- ⚙️ **365 Days** Free Update
- ⚙️ **800,000+** Satisfied Customers





### QUESTION 1

What is true concerning the UML model depicted in the exhibit?

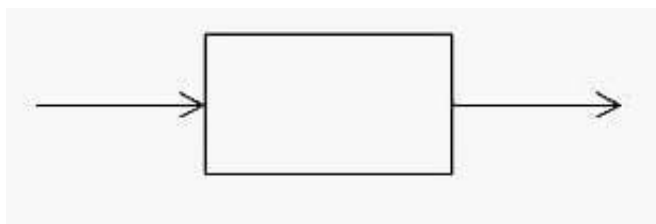


- A. M is not a behavior of C since p and q are not defined within C.
- B. If M is a behavior in C, then a in C is the property represented by lifeline a in M.
- C. a and b are lifelines within C, as well as being the same entities as those referenced in M.
- D. The communication diagram on the left forms the base for the sequence diagram on the right.

Correct Answer: B

### QUESTION 2

What do arrowed lines connecting to and from a rectangle (as depicted in the exhibit) represent in UML 2.0 activity diagrams?



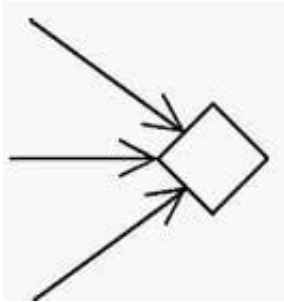
- A. object flows
- B. control flows
- C. dependencies
- D. state transitions
- E. message passing
- F. unidirectional associations

Correct Answer: A



### QUESTION 3

How many of the three incoming arrows to the diamond shape (as depicted in the exhibit) must provide values for the diamond to have an effect?



- A. none
- B. one
- C. two
- D. three

Correct Answer: B

### QUESTION 4

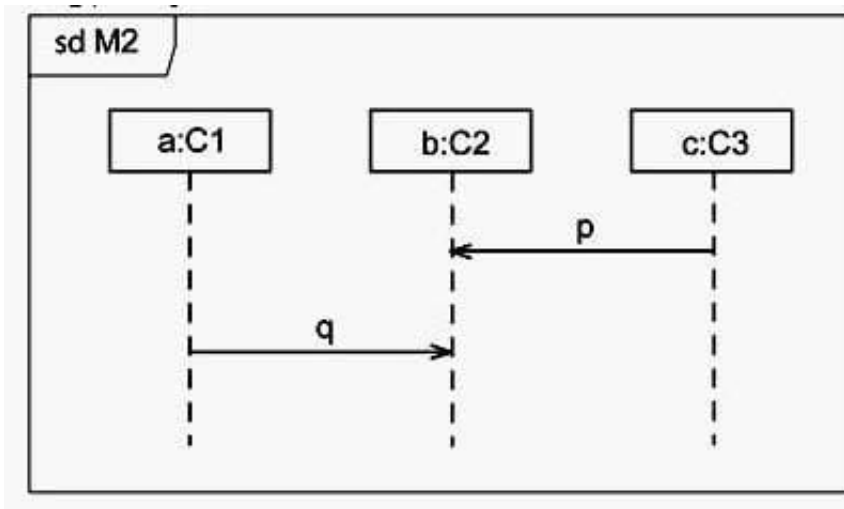
What is a selector of a lifeline?

- A. a scheduler that chooses the next lifeline on which to run
- B. a specific lifeline that selects a resource from a resource pool
- C. a construct to select one lifeline out of all the lifelines in the diagram
- D. an expression selecting one out of a set; a general indexing mechanism

Correct Answer: D

### QUESTION 5

Let us denote sending of  $p$  as  $!p$  and receiving  $p$  as  $?p$ . Which traces define the interaction M2 in the exhibit? (Choose three)



- A.
- B.
- C.
- D.