



PW0-250^{Q&As}

Certified Wireless Design Professional (CWDP)

Pass CWNP PW0-250 Exam with 100% Guarantee

Free Download Real Questions & Answers **PDF** and **VCE** file from:

<https://www.geekcert.com/pw0-250.html>

100% Passing Guarantee
100% Money Back Assurance

Following Questions and Answers are all new published by CWNP
Official Exam Center

-  **Instant Download** After Purchase
-  **100% Money Back** Guarantee
-  **365 Days** Free Update
-  **800,000+** Satisfied Customers





QUESTION 1

To achieve a 450 Mbps MCS, what 802.11n features (from the numbered list below) are required?

1.
Frame aggregation
2.
Short GI
3.
40 MHz channels
4.
2 spatial streams
5.
3 spatial streams
6.
Transmit beamforming (TxBF)

- A. 1, 2, 3, 4
- B. 1, 2, 3, 5
- C. 1, 2, 3, 4, 6
- D. 1, 2, 3, 5, 6
- E. 2, 3, 4
- F. 2, 3, 5

Correct Answer: F

QUESTION 2

You are testing a VoWLAN deployment, and your communication measurements show a certain amount of lost packets. What would be an acceptable packet error rate value to still provide acceptable call quality?

- A. There should be 0% error in a VoWLAN type of deployment
- B. No more than 1% PER max should be acceptable

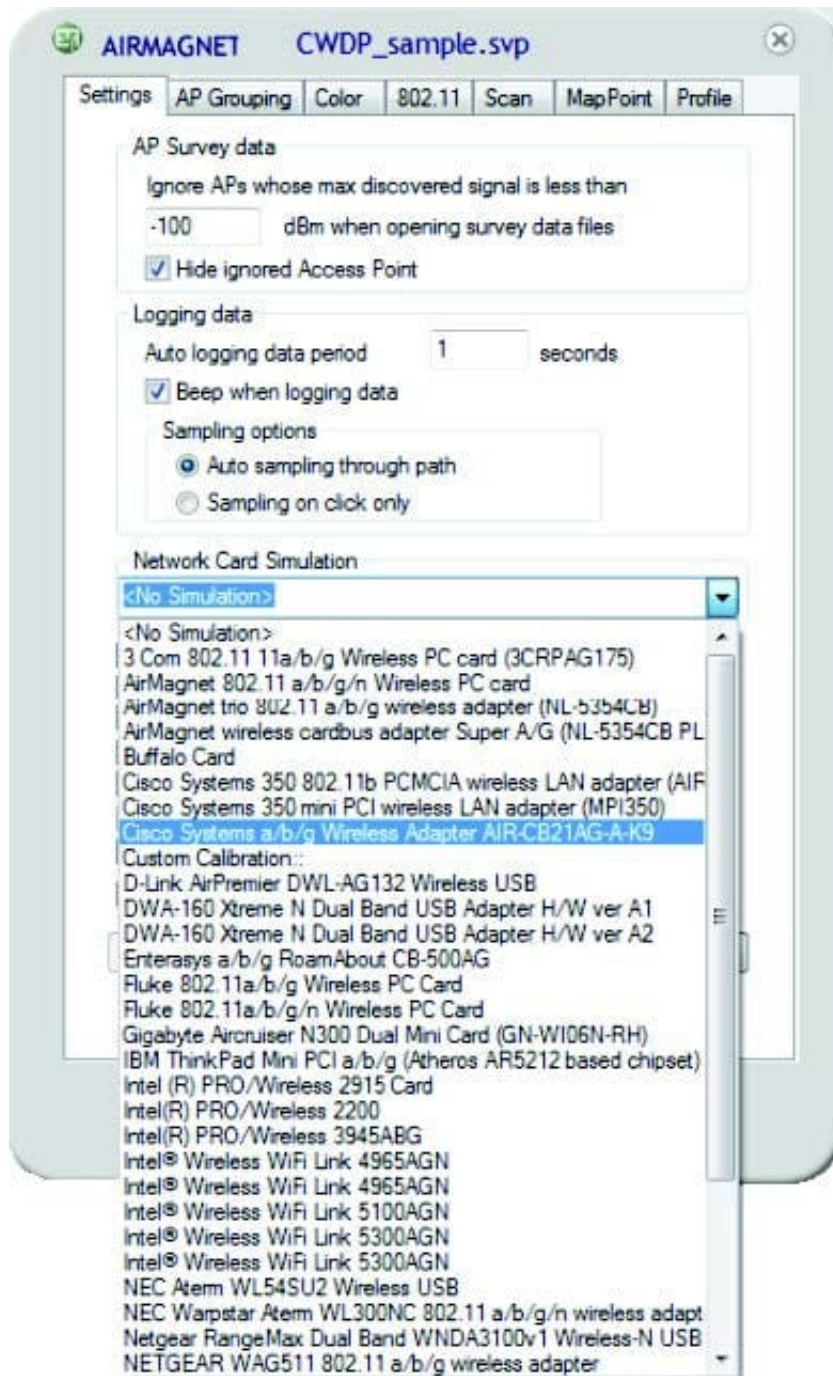


- C. No more than 4% PER max should be acceptable
- D. No more than 8% PER max should be acceptable
- E. No more than 12% PER max should be acceptable

Correct Answer: B

QUESTION 3

While configuring your site survey software for an upcoming manual survey project, you notice the configuration option for "Network Card Simulation" as shown in the exhibit.



A. This setting allows the site survey software to convert the AP's measured downlink RF data into a simulated data set as if the same data were transmitted by a specific client station. It is useful for determining uplink client performance when clients are located far from APs as well as projecting cell size for ad hoc networks.

B. Since WLAN adapters are not typically calibrated by manufacturers, this setting is a form of software calibration in which you can calibrate an (uncalibrated) adapter to match one of the calibrated adapters shown in the list. This process improves the reliability of RF data collection and reporting when uncalibrated adapters are used.

C. This is the configuration area in which you specify the adapter type that will be used for the site survey so that the survey software can interpret that adapter's reported metrics (based on proprietary formulas) into an RF measurement that is standardized by the survey software and known to its users. This is done for every survey.

D. The site survey software manufacturer allows you to view the collected RF data as if it were collected by a different



type of adapter. This functionality allows you to review survey data to determine how the RF environment will likely look based on the receive sensitivity and other RF capabilities of a specific client adapter.

Correct Answer: D

QUESTION 4

Given: Assume that music on hold (MOH) features are unicast only.

What VoWiFi implementations require multicast packet delivery support by the WLAN infrastructure?

- A. All VoWiFi implementations
- B. Push-to-Talk VoWiFi phones
- C. VoWiFi soft phones
- D. FMC phones
- E. Flat (non-VLAN) VoWiFi implementations

Correct Answer: B

QUESTION 5

Given: Use Exhibit 1, 2, and 3 to answer the question.

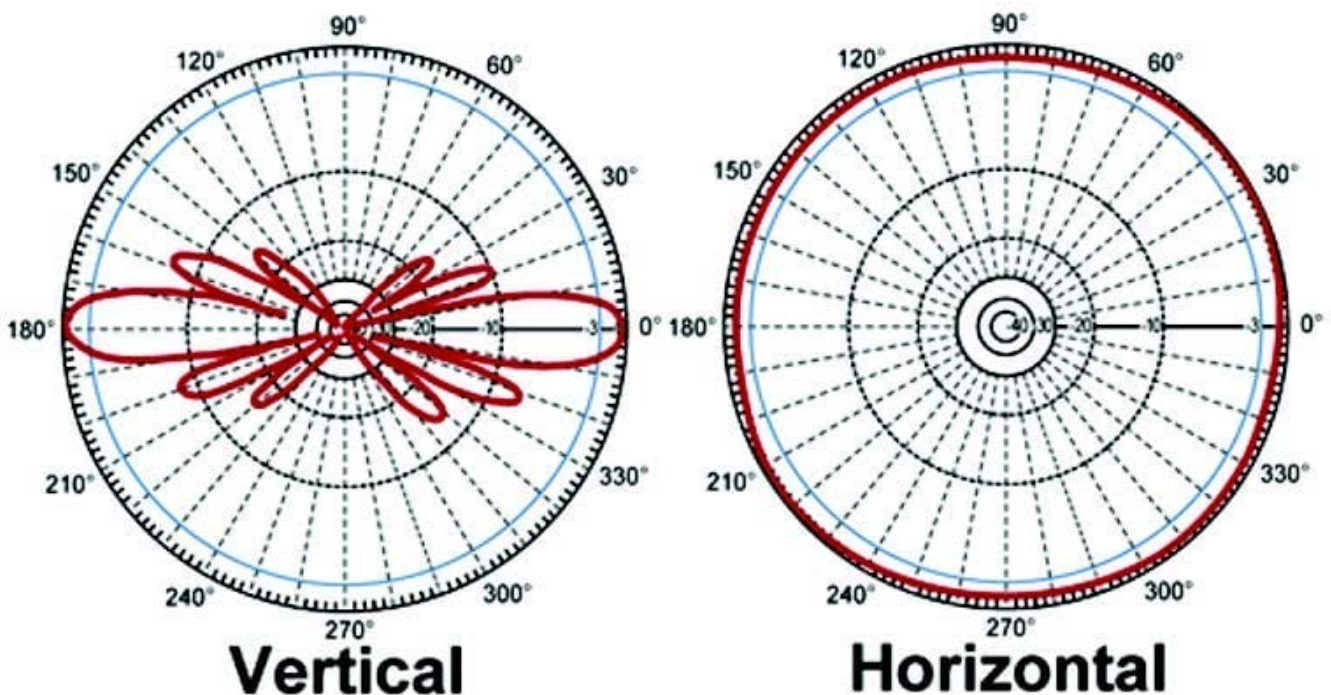




Figure 1



Figure 2



Figure 3



Figure 4



Figure 5



Figure 6



The azimuth and elevation charts for which type of antenna are shown in Exhibit 1?

- A. Figure 1
- B. Figure 2
- C. Figure 3
- D. Figure 4
- E. Figure 5
- F. Figure 6



Correct Answer: C

[PW0-250 Practice Test](#)

[PW0-250 Study Guide](#)

[PW0-250 Braindumps](#)