



# QV\_DEVELOPER\_01<sup>Q&As</sup>

QlikView 11 Developer Certification Examination

**Pass QlikView QV\_DEVELOPER\_01 Exam with 100% Guarantee**

Free Download Real Questions & Answers **PDF** and **VCE** file from:

[https://www.geekcert.com/qv\\_developer\\_01.html](https://www.geekcert.com/qv_developer_01.html)

100% Passing Guarantee  
100% Money Back Assurance

Following Questions and Answers are all new published by QlikView  
Official Exam Center

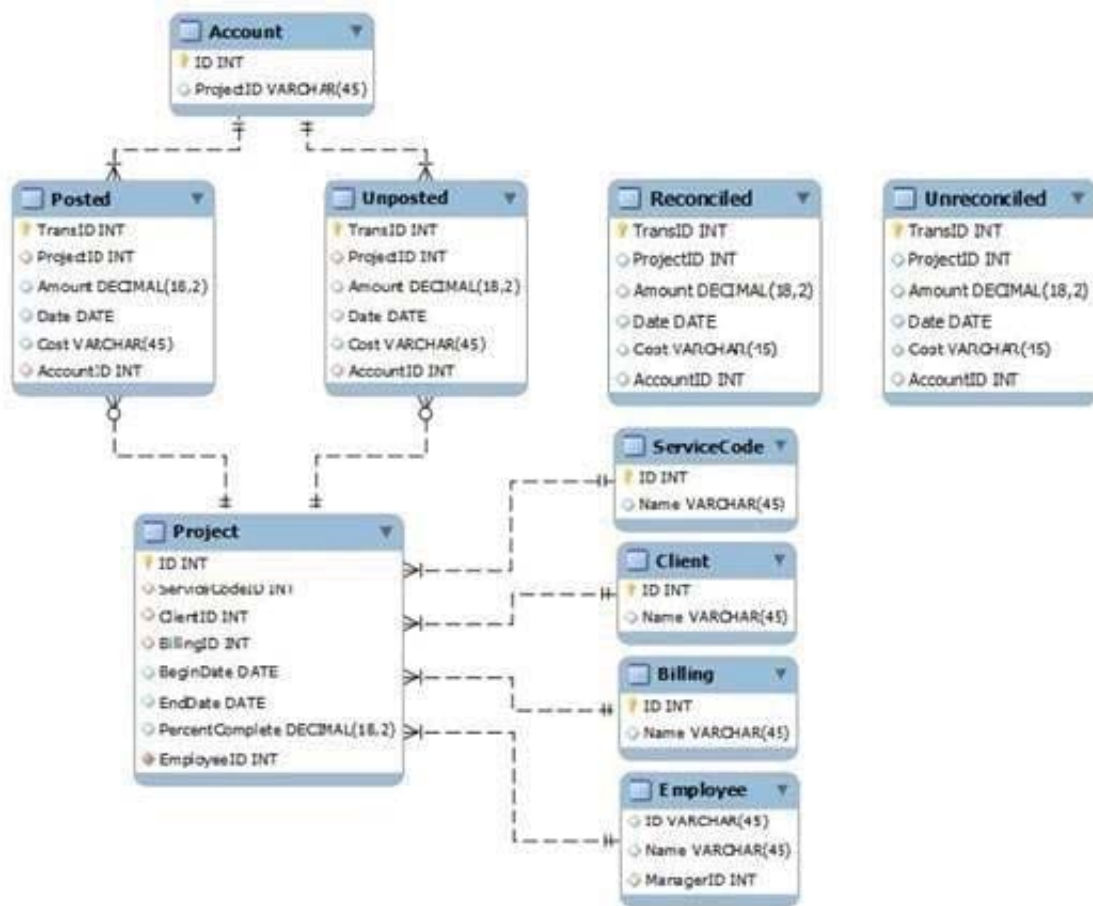
- ⚙ **Instant Download** After Purchase
- ⚙ **100% Money Back** Guarantee
- ⚙ **365 Days** Free Update
- ⚙ **800,000+** Satisfied Customers





## QUESTION 1

Refer to the exhibit.



A customer needs to analyze transactions across the Dimensions and Metrics identified below.

Required Dimensions:

Project ID

Month

Year Account ID Transaction Type Client ID Required Metrics: Number of transactions Total Amount Total Cost Average Amount Average Cost

Which approach will provide the most effective QlikView data model to meet the customer's requirements while optimizing performance and maintaining accuracy?

- A. build a Link Table to connect the four transaction tables and add a summary table with pre-calculated counts, totals, and averages
- B. build a Link Table to connect the four transaction tables and alias fields that must be kept in their respective table
- C. concatenate the four transaction tables and add a summary table with pre-calculated counts, totals, and averages

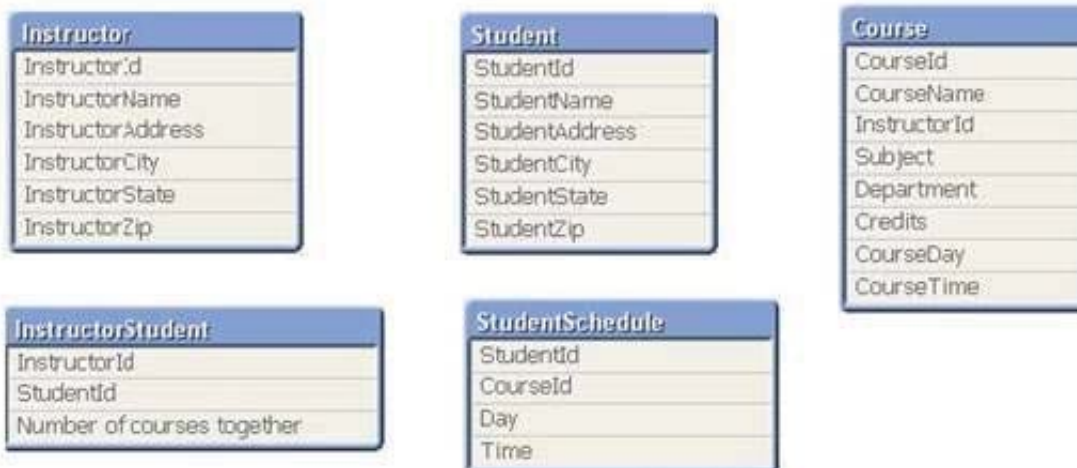


- D. concatenate the four transaction tables and add fields to identify the record type and count fag
- E. keep the four transaction tables separate and qualify the names to control correct linkage

Correct Answer: D

## QUESTION 2

Refer to the exhibit below.



The tables displayed in the exhibit need to be loaded into QlikView. How will the data model appear once the load is complete?

- A. There will be a relationship between all the tables without synthetic key tables or loosely coupled tables.
- B. There will be a relationship between four of the five tables and one table will be a data island.
- C. There will be a synthetic key table in the data model.
- D. There will be loosely coupled tables in the data model.

Correct Answer: D

## QUESTION 3

A customer needs to produce formatted output as a PDF to distribute it to non-QlikView users. Each page should show sales trending for a different sales team. The number of sales teams will change frequently. What should a developer create to efficiently enable users to create the required output?

- A. a report with banding on salesTeam
- B. a report with GROUP BY on salesTeam
- C. separate reports with where clauses for each salesTeam
- D. separate reports referencing bookmarks for each salesTeam



E. a report that uses current selections where the user selects each salesTeam in turn

Correct Answer: A

---

#### QUESTION 4

Refer to the exhibit to the right and the Load script provided below. Exhibit.

```
ItemID, LocationID, Quantity
111A, 21, 1,100
111A, 31, 1,300
222B, 11, 2,210
222B, 21, 2,250
222B, 31, 3,125
333C, 11, 3,130
333C, 31, 3,120
```

LOAD ItemID

LocationID,

Quantity

FROM

[inventory.txt]

(txt, codepage is 1252, embedded labels, delimiter is '\\', msq);

When the developer runs the script, which values will the field Quantity contain?

A. NULL

B. 1; 2; 3

C. 1100; 1300; 2210; 2250; 3125; 3130; 3120

D. 1100; 1300; 2210; 2250; 3125; 3130; 3120

Correct Answer: B

---

#### QUESTION 5

A customer's product catalog database contains approximately 50000 individual product SKUs. The catalog is updated quarterly.

The customer needs the load on database servers to be minimized.

Which technique should a developer use to meet the customer's needs?



- A. a preceding load statement when loading the product catalog quarterly from the customer\\'s database
- B. the BUFFER statement when loading the product catalog quarterly from the customer\\'s database
- C. a mapping table when loading the product catalog quarterly from the customer\\'s database
- D. a QVD file to store the product catalog quarterly from the customer\\'s database

Correct Answer: D

[QV\\_DEVELOPER\\_01 VCE Dumps](#)

[QV\\_DEVELOPER\\_01 Practice Test](#)

[QV\\_DEVELOPER\\_01 Braindumps](#)