



ST0-91W^{Q&As}

Symantec NetBackup 7.0 for Windows(STS)

Pass Symantec ST0-91W Exam with 100% Guarantee

Free Download Real Questions & Answers **PDF** and **VCE** file from:

<https://www.geekcert.com/st0-91w.html>

100% Passing Guarantee
100% Money Back Assurance

Following Questions and Answers are all new published by Symantec
Official Exam Center

-  **Instant Download** After Purchase
-  **100% Money Back** Guarantee
-  **365 Days** Free Update
-  **800,000+** Satisfied Customers





QUESTION 1

A request is made to change volume residences.

Which two conditions must be met in the volume group that is associated with the changes? (Select two.)

- A. All volumes in a volume group must have the same residence.
- B. All volumes must have barcode labels.
- C. All volumes must be assigned to scratch pool.
- D. All volumes must be vaulted before adding volumes to the group.
- E. All volumes must have the same media type.

Correct Answer: AE

QUESTION 2

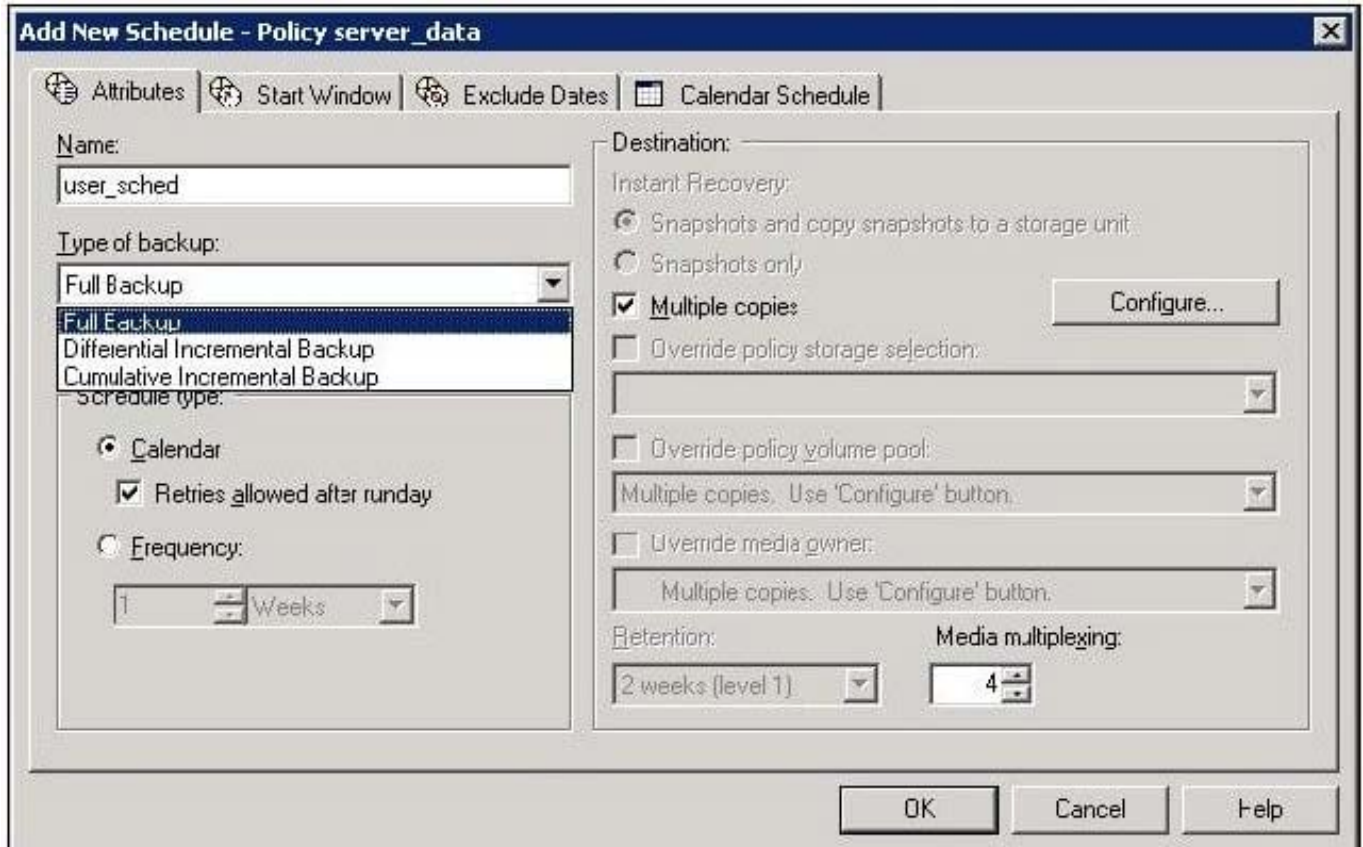
The Symantec NetBackup 7.0 operations staff suspects that there is a problem with the robot showing all of the media they just added. However, the list of tapes displayed in the administration console is incomplete. What should be done to troubleshoot this problem?

- A. run the vmphyinv command to physically inventory the robot
- B. stop and restart the bprd and bptm services/processes on the media servers
- C. perform a number of test backups to see if any of the new tapes are being used
- D. run the tape contents report to see if any of the tapes have been written to

Correct Answer: A

QUESTION 3

Refer to the exhibit.



The administrator is attempting to add a schedule for the backup policy. In this case "User Backup" is missing from the drop-down list of schedule types.

What needs to be done to have "User Backup" appear under the Type of backup drop-down list?

- A. change the backup policy type
- B. deselect "Multiple copies"
- C. deselect "Retries allowed after runday"
- D. change the value of Media Multiplexing to 1

Correct Answer: A

QUESTION 4

A Symantec NetBackup 7.0 client and media server are separated by a slow wide area network (WAN) connection. Which policy attribute should be enabled to minimize the amount of data that travels over the WAN?

- A. compression
- B. allow multiple data streams
- C. limit jobs per policy
- D. enable network throttle



Correct Answer: A

QUESTION 5

A company deployed Symantec NetBackup 7.0 LiveUpdate on a Windows LiveUpdate file share. None of the clients are receiving updates from the file server. What is a possible explanation of this problem?

- A. LiveUpdate can only be run from a web server.
- B. The file share must have "NULL" permissions.
- C. LiveUpdate must be run on a UNIX server.
- D. The file share must be located on the boot drive.

Correct Answer: B

[ST0-91W VCE Dumps](#)

[ST0-91W Practice Test](#)

[ST0-91W Exam Questions](#)