



ST0-91W^{Q&As}

Symantec NetBackup 7.0 for Windows(STS)

Pass Symantec ST0-91W Exam with 100% Guarantee

Free Download Real Questions & Answers **PDF** and **VCE** file from:

<https://www.geekcert.com/st0-91w.html>

100% Passing Guarantee
100% Money Back Assurance

Following Questions and Answers are all new published by Symantec
Official Exam Center

-  **Instant Download** After Purchase
-  **100% Money Back** Guarantee
-  **365 Days** Free Update
-  **800,000+** Satisfied Customers





QUESTION 1

A company deployed Symantec NetBackup 7.0 LiveUpdate on a Windows LiveUpdate file share. None of the clients are receiving updates from the file server. What is a possible explanation of this problem?

- A. LiveUpdate can only be run from a web server.
- B. The file share must have "NULL" permissions.
- C. LiveUpdate must be run on a UNIX server.
- D. The file share must be located on the boot drive.

Correct Answer: B

QUESTION 2

Which statement best describes your ability to modify and maintain the Symantec NetBackup 7.0 configuration?

- A. I can modify and maintain the Symantec NetBackup 7.0 configuration WITHOUT assistance.
- B. I can modify and maintain the Symantec NetBackup 7.0 configuration with MINIMAL assistance (e.g., referring to documentation).
- C. I can modify and maintain the Symantec NetBackup 7.0 configuration with SIGNIFICANT assistance (e.g., calling support or working with a mentor).
- D. I am familiar with how to modify and maintain the Symantec NetBackup 7.0 configuration but have NO field experience.
- E. I am NOT familiar with how to modify and maintain the Symantec NetBackup 7.0 configuration.

Correct Answer: C

QUESTION 3

Where in the Symantec NetBackup 7.0 administration console is client-side deduplication enabled?

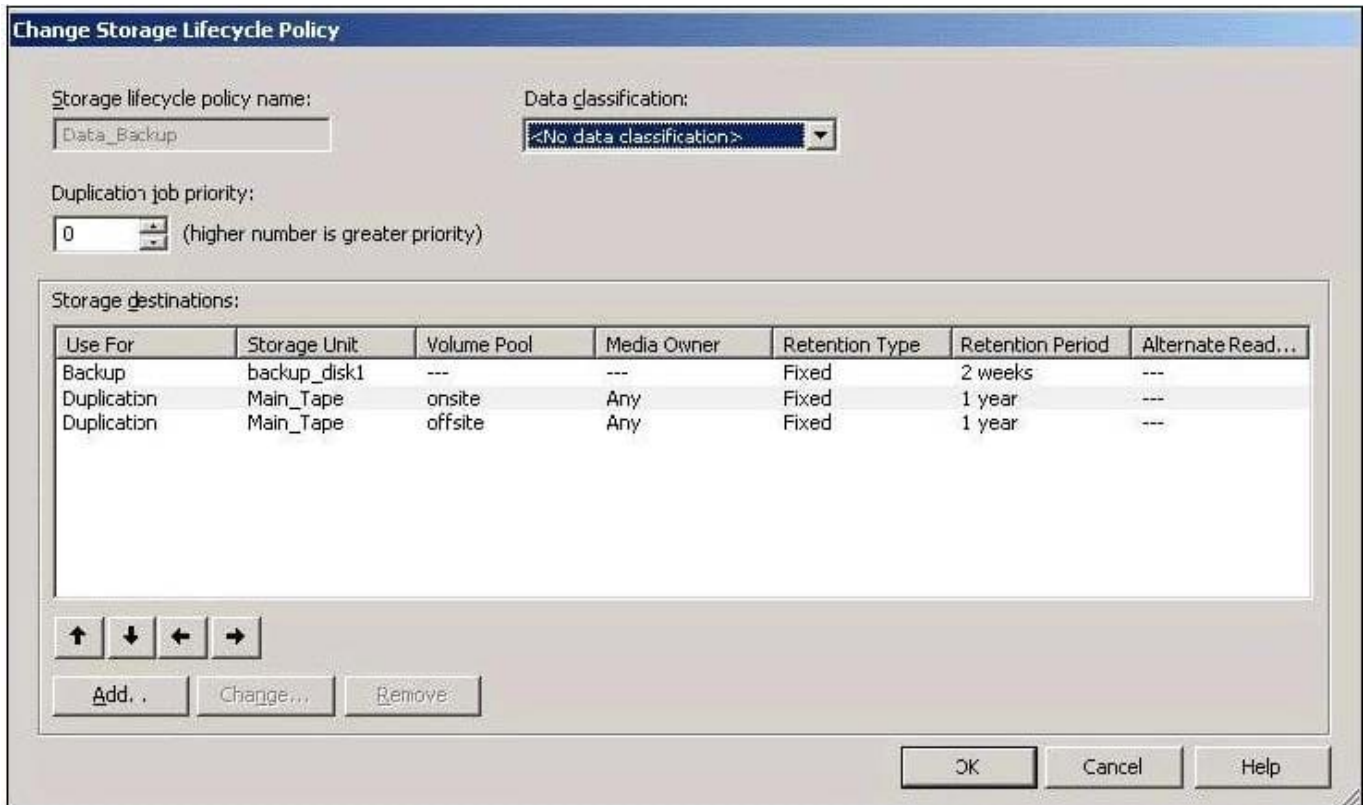
- A. Master Server Host Properties, Global Attributes
- B. Media Server Host Properties, Servers
- C. Master Server Host Properties, Client Attributes
- D. Media Server Host Properties, Deduplication Attributes

Correct Answer: C

QUESTION 4



Refer to the exhibit.



During the course of operation, the administrator notices that initial backup jobs are failing because the disk storage is full. How could this issue have been avoided?

- A. by setting the duplication retentions to one week
- B. by setting the backup retention to expire immediately after the duplication job
- C. by selecting the "\\Expire Images Before Full\\" checkbox for the Disk Storage Unit
- D. by using another Tape Storage Unit for duplications

Correct Answer: B

QUESTION 5

The Symantec NetBackup 7.0 master server has a Microsoft Windows policy that protects over 500 desktops and laptops at a given site using the directive ALL_LOCAL_DRIVES. The backup window for this policy is between 3 p.m.-5 p.m. and is unshared with any other policy. When the backup window for this policy is open, the overall performance of the disk storage unit gets degraded. Which setting should the administrator modify to reduce the number of concurrent streams writing to the disk storage unit to 10 during the backup window?

- A. disable the "Enable Multiplexing" attribute for the storage unit
- B. disable the "Enable multiple data streams" attribute to eliminate parent jobs from being created
- C. enable multiplexing for the storage unit and set the value to 10



D. enable the "Limit Jobs per policy" attribute

Correct Answer: D

[ST0-91W PDF Dumps](#)

[ST0-91W VCE Dumps](#)

[ST0-91W Practice Test](#)