



# ST0-91W<sup>Q&As</sup>

Symantec NetBackup 7.0 for Windows(STS)

**Pass Symantec ST0-91W Exam with 100% Guarantee**

Free Download Real Questions & Answers **PDF** and **VCE** file from:

<https://www.geekcert.com/st0-91w.html>

100% Passing Guarantee  
100% Money Back Assurance

Following Questions and Answers are all new published by Symantec  
Official Exam Center

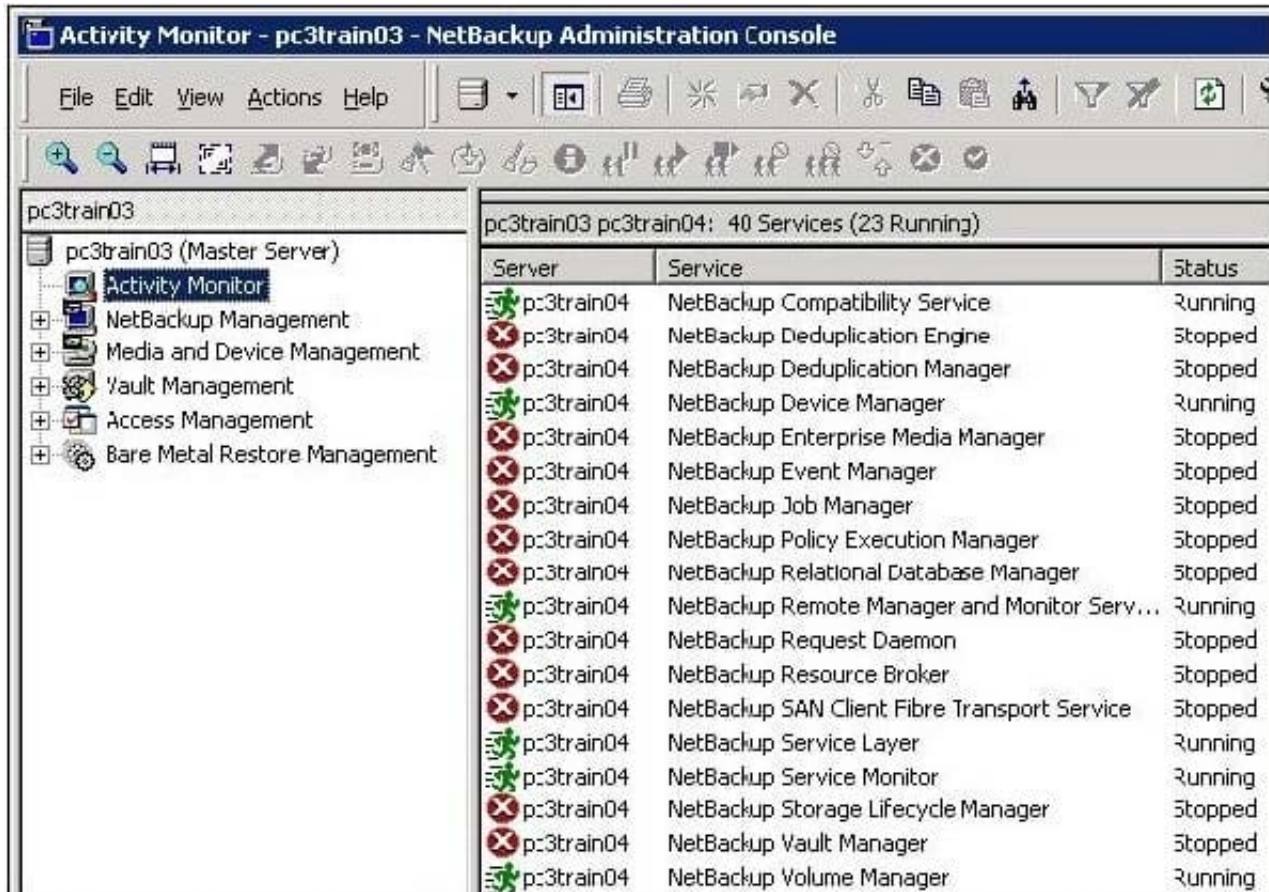
-  **Instant Download** After Purchase
-  **100% Money Back** Guarantee
-  **365 Days** Free Update
-  **800,000+** Satisfied Customers





### QUESTION 1

Refer to the exhibit.



A Symantec NetBackup 7.0 environment has a master server named pc3train03 and a newly installed media server named pc3train04.

After installing the new media server, the administrator decides to reboot the system.

After the reboot, the Activity Monitor shows that many services are stopped, as seen in the exhibit.

The administrator needs to configure the newly attached hardware on this media server.

What should the administrator do next on the media server?

- A. install an unexpired license key on the media server
- B. configure the devices on the media server
- C. run the Symantec NetBackup commands used to start all services
- D. run a command to start just the NetBackup Enterprise Media Manager (nbemm)

Correct Answer: B



## QUESTION 2

An administrator attempts to use the Backup, Archive, and Restore interface to restore the server's data. Upon selecting the client name and policy type, the administrator notices that restore points are unavailable. The backup jobs have been completed successfully. What should the administrator do first to troubleshoot this issue?

- A. verify the tape media is available in the tape library
- B. verify the backup image has yet to expire
- C. verify the restore policy is enabled
- D. verify the date and time are set correctly on the media server

Correct Answer: B

---

## QUESTION 3

A restore must be performed. The administrator is trying to view the valid images for a client, but the following error occurs:

WARNING: Server does not contain any valid images.

Which two may be incorrectly configured? (Select two.)

- A. schedule type for restores
- B. destination client for restores
- C. server to use for backups and restores
- D. media server for backups and restores
- E. policy types for restore

Correct Answer: CE

---

## QUESTION 4

A Symantec NetBackup 7.0 administrator at an accounting company has assigned the following default data classifications to the data that is being protected on a single disk storage unit. Type of data Data Classification E-mail Platinum Financial data Gold Sales Silver

Personnel Bronze Disk space is now limited and the administrator needs to ensure that financial data is preserved longer than e-mail data. What should the administrator do?

- A. delete the Platinum data classification ID associated with e-mail data and re-define it for use with financial data
- B. temporarily suspend the NetBackup scheduler, alter the Data Classification Names and Description to reflect their new values, and resume the scheduler



C. manually duplicate the data again to the same disk storage unit using a lifecycle policy and set the data classification value to Platinum

D. alter the rank for the Gold data classification to be higher than the rank of the Platinum data classification

Correct Answer: D

---

#### QUESTION 5

When changes have been made to devices, which service must be stopped and restarted on the master server and all affected media servers?

A. bprd

B. ltid

C. bpdbrm

D. vmd

Correct Answer: B

[ST0-91W PDF Dumps](#)

[ST0-91W VCE Dumps](#)

[ST0-91W Braindumps](#)