



# TB0-123<sup>Q&As</sup>

TIBCO ActiveMatrix BusinessWorks 5 Certification Exam

## Pass Tibco TB0-123 Exam with 100% Guarantee

Free Download Real Questions & Answers **PDF** and **VCE** file from:

<https://www.geekcert.com/tb0-123.html>

100% Passing Guarantee  
100% Money Back Assurance

Following Questions and Answers are all new published by Tibco  
Official Exam Center

- ⚙️ **Instant Download** After Purchase
- ⚙️ **100% Money Back** Guarantee
- ⚙️ **365 Days** Free Update
- ⚙️ **800,000+** Satisfied Customers





### QUESTION 1

Which three actions can be taken directly from the Project tab in the TIBCO Designer startup panel? (Choose three.)

- A. Reopen Project
- B. Add Users to Project
- C. New Project From Template
- D. Validate Project
- E. New Empty Project
- F. Deploy Project

Correct Answer: ACE

---

### QUESTION 2

The Generic Adapter Configuration supports which three adapter services? (Choose three.)

- A. Write to Adapter Socket
- B. Remote Invocation
- C. Respond to Adapter Request
- D. Publication
- E. Subscription
- F. Request-Response

Correct Answer: DEF

---

### QUESTION 3

A solution must implement different integration logic based on an object type. Depending on the object type, different external systems and interfaces must be called. There are more than 50 object types in the system. Which type of activity contains the Process Dynamic Override functionality required in this solution?

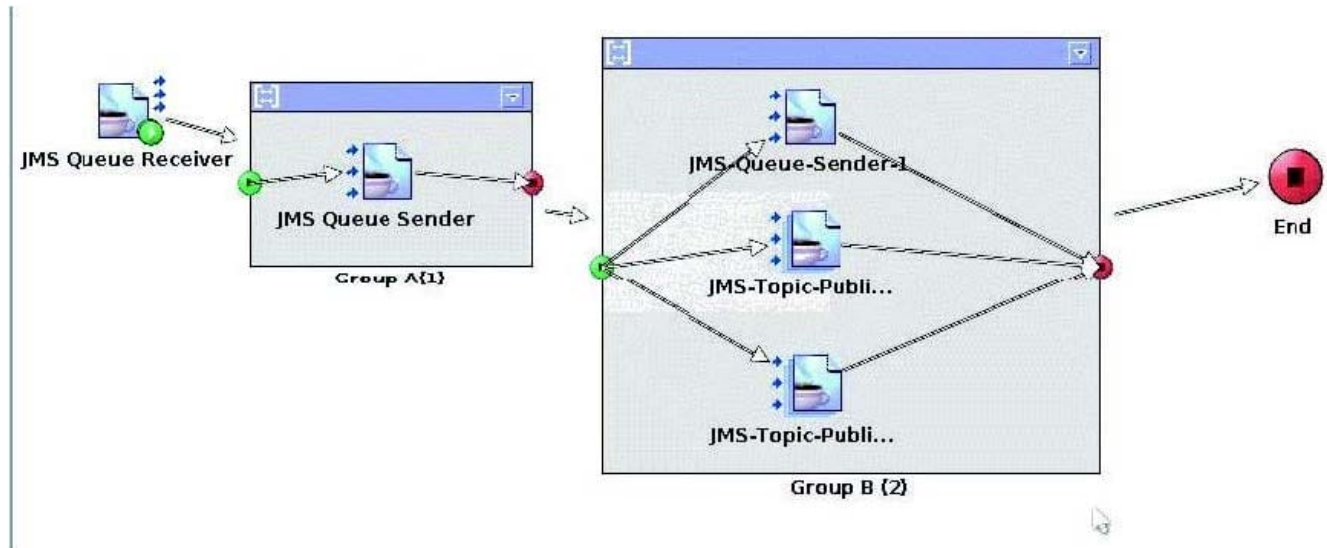
- A. Dispatch activity
- B. Call Process activity
- C. Null activity
- D. Java activity



Correct Answer: B

#### QUESTION 4

Click the Exhibit button.



This process uses JMS Local transaction. The JMS Topic Publishers all point to JMS Shared Connection1. The JMS Queue Senders all point to JMS Shared Connection2. The JMS Queue Receiver is configured to tie into Group A(1).

How many transactions are committed if the process executes successfully?

- A. 1
- B. 2
- C. 3
- D. 4
- E. 5

Correct Answer: C

#### QUESTION 5

Process A has a Timer. Process B has a JMS Queue Receiver. Process C has a JMS Topic Subscriber. These processes are to be deployed on two machines and configured to operate in fault-tolerant and load-balanced mode. Which two steps should you take to achieve this configuration? (Choose two.)

- A. bundle the Timer and the JMS Queue Receiver in one EAR file and deploy it in fault-tolerant mode
- B. bundle the JMS Topic Subscriber and Timer in one EAR file and deploy it in fault-tolerant mode



- C. put the JMS Queue Receiver in its own EAR and deploy it twice
- D. bundle the two JMS-based starters in one EAR file and deploy it twice
- E. put the Timer in its own EAR and deploy it in fault-tolerant mode
- F. put the JMS Topic Subscriber in its own EAR file and deploy it twice

Correct Answer: BC

[Latest TB0-123 Dumps](#)

[TB0-123 Study Guide](#)

[TB0-123 Exam Questions](#)