



# TB0-123<sup>Q&As</sup>

TIBCO ActiveMatrix BusinessWorks 5 Certification Exam

**Pass Tibco TB0-123 Exam with 100% Guarantee**

Free Download Real Questions & Answers **PDF** and **VCE** file from:

<https://www.geekcert.com/tb0-123.html>

100% Passing Guarantee  
100% Money Back Assurance

Following Questions and Answers are all new published by Tibco  
Official Exam Center

-  **Instant Download** After Purchase
-  **100% Money Back** Guarantee
-  **365 Days** Free Update
-  **800,000+** Satisfied Customers





### QUESTION 1

Which statement is true about the Load Full Project option in TIBCO Designer?

- A. It loads only the referenced parts of the project.
- B. It loads and validates the entire project in memory.
- C. It makes working with the project faster.
- D. It finds references to other projects in memory.

Correct Answer: C

---

### QUESTION 2

Which four resources can be shared using the LibraryBuilder? (Choose four.)

- A. PAR within an EAR
- B. JMS Configuration
- C. SAR within an EAR
- D. Identity
- E. SSL Certificate
- F. XSD Schema
- G. AAR within an EAR

Correct Answer: BDEF

---

### QUESTION 3

When do Rendezvous Subscribers operate in a load-balanced fashion?

- A. when the appropriate server type is selected
- B. when the appropriate transport type is selected
- C. when Auto Client ID is not selected
- D. when Acquire Exclusive Lock is checked

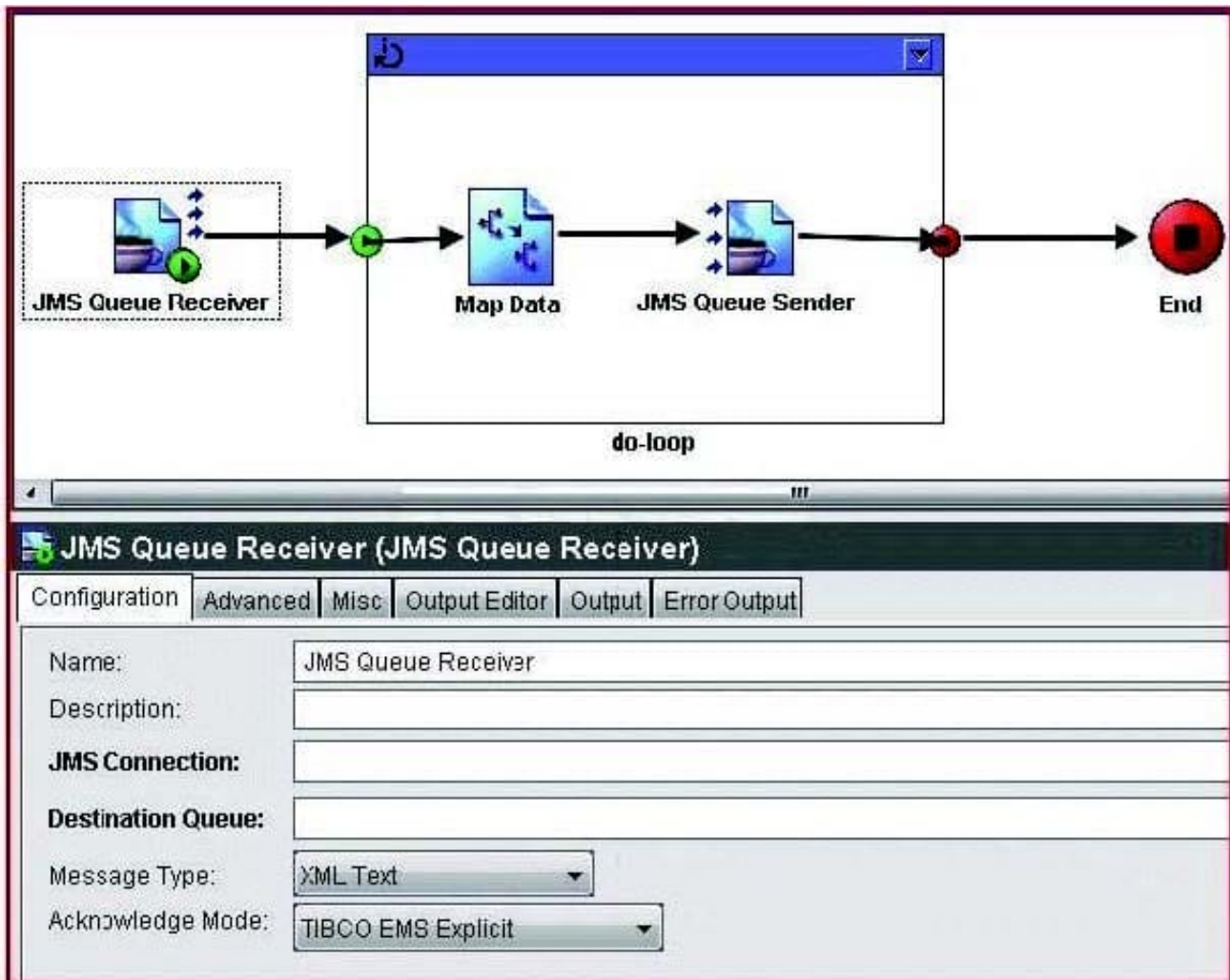
Correct Answer: B

---



#### QUESTION 4

Click the Exhibit button.



Which statement is true about the process shown?

- A. The map activity will be called as many times as the number of records being iterated.
- B. The map activity will be called only once because the group is a critical section guarding access to the messaging bus.
- C. The confirm activity is missing, so the process will not start.
- D. The message is never confirmed and is therefore redelivered continuously.

Correct Answer: D

#### QUESTION 5



Which variable type should you use for a project connecting to multiple databases using JDBC Connections if a different set of databases is used for testing and production?

- A. Process Variable
- B. Global Variable
- C. Job Shared Variable
- D. System Variable

Correct Answer: B

[TB0-123 VCE Dumps](#)

[TB0-123 Exam Questions](#)

[TB0-123 Braindumps](#)