



# TB0-123<sup>Q&As</sup>

TIBCO ActiveMatrix BusinessWorks 5 Certification Exam

## Pass Tibco TB0-123 Exam with 100% Guarantee

Free Download Real Questions & Answers **PDF** and **VCE** file from:

<https://www.geekcert.com/tb0-123.html>

100% Passing Guarantee  
100% Money Back Assurance

Following Questions and Answers are all new published by Tibco  
Official Exam Center

- ⚙️ **Instant Download** After Purchase
- ⚙️ **100% Money Back** Guarantee
- ⚙️ **365 Days** Free Update
- ⚙️ **800,000+** Satisfied Customers





### QUESTION 1

When a loaded process begins with a Start activity that requires input, what are two ways to automatically load the data when you click the Supply Input Data to Starter button? (Choose two.)

- A. from a file
- B. from a project
- C. from a process
- D. from a Read File activity

Correct Answer: CD

### QUESTION 2

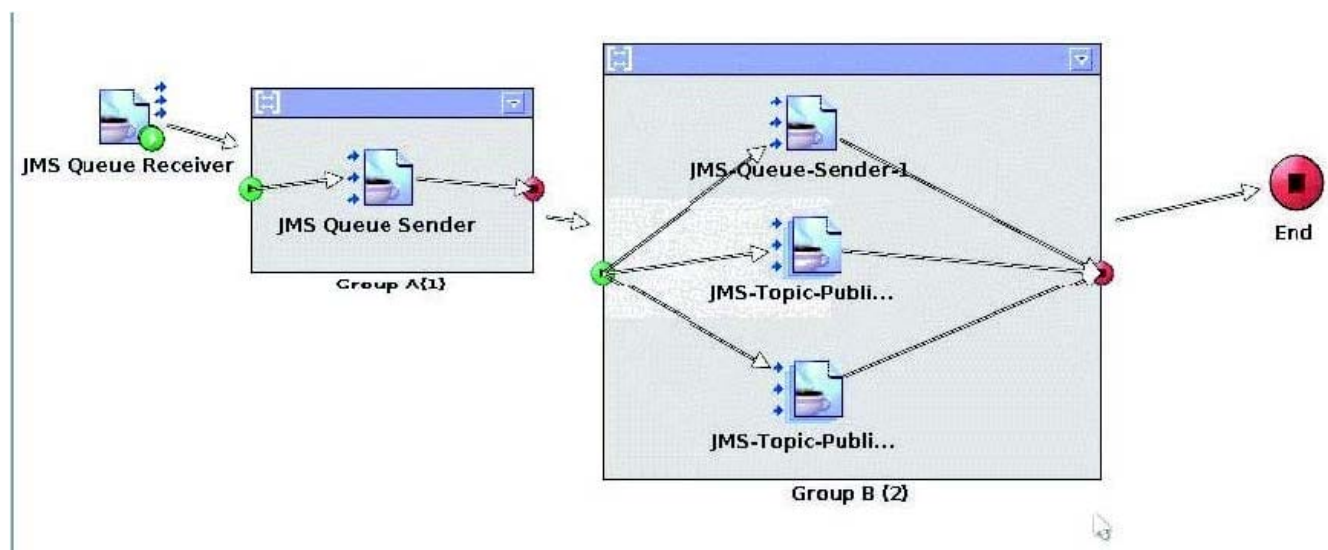
You wish to allow a message selector to be changed at runtime. Which JMS activity should you use?

- A. Get JMS Queue Message
- B. JMS Topic Publisher
- C. JMS Queue Sender
- D. Reply To JMS Message

Correct Answer: A

### QUESTION 3

Click the Exhibit button.





This process uses JMS Local transaction. The JMS Topic Publishers all point to JMS Shared Connection1. The JMS Queue Senders all point to JMS Shared Connection2. The JMS Queue Receiver is configured to tie into Group A(1).

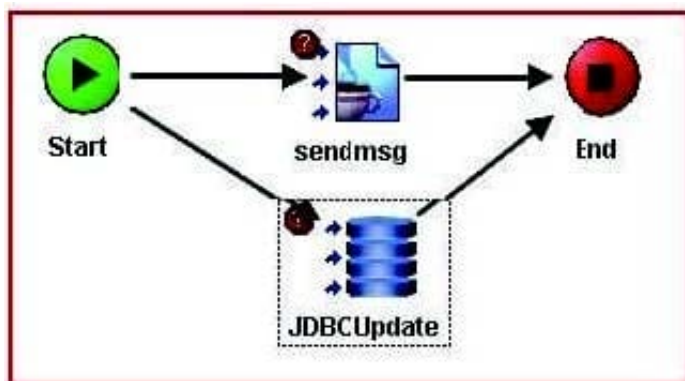
How many transactions are committed if the process executes successfully?

- A. 1
- B. 2
- C. 3
- D. 4
- E. 5

Correct Answer: C

#### QUESTION 4

Click the Exhibit button.



What is represented by the two question marks in red circles?

- A. missing references to shared resources
- B. conditional break points
- C. errors in the input-mapping
- D. conditional transitions

Correct Answer: B

#### QUESTION 5



By default, ActiveMatrix BusinessWorks 5.9 uses which version of the Java Runtime Environment?

- A. 1.3.2
- B. 1.5.0
- C. 1.6.0
- D. 1.4.2

Correct Answer: A

[TB0-123 VCE Dumps](#)

[TB0-123 Exam Questions](#)

[TB0-123 Braindumps](#)